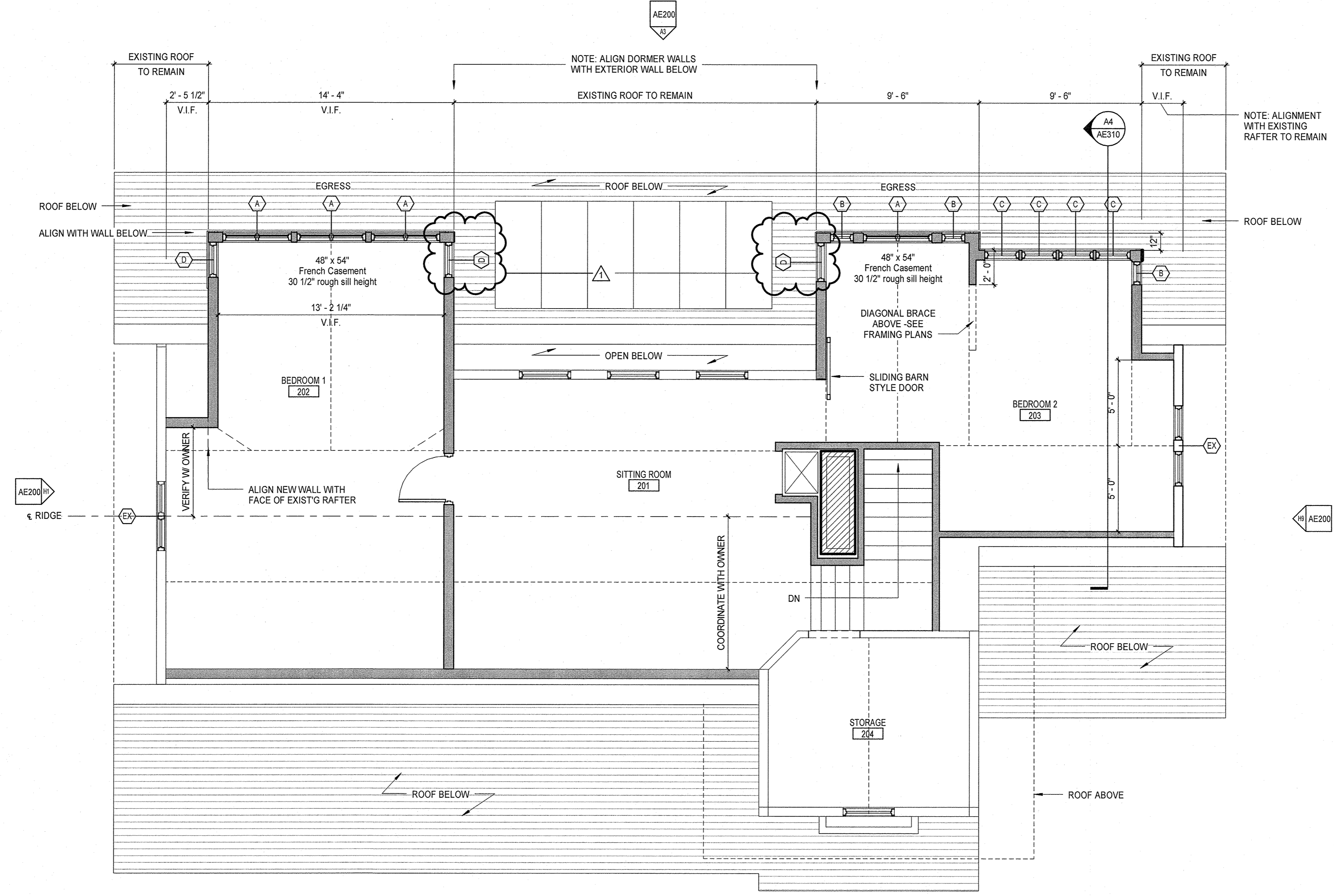
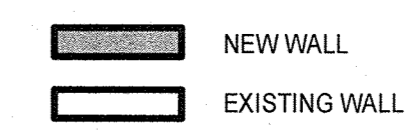


WINDOW SCHEDULE

TYPE	OPERATION	WIDTH (F.S.)	HEIGHT (F.S.)	SILL HEIGHT	SASH CONFIG.	GLASS SIZE (BTWN MUNTINS)
A	FRENCH CASEMENT	4'-0"	4'-6"	2'-6 1/2"	8 LITES (2w x 4h)	8 7/8" x 11 1/2"
B	FIXED	1'-3"	4'-6"	2'-6 1/2"	4 LITES (1w x 4h)	8 7/8" x 11 1/2"
C	AWNING	2'-0 1/2"	4'-6"	2'-6 1/2"	8 LITES (2w x 4h)	8 7/8" x 11 1/2"
D	FIXED	2'-0 1/2"	4'-6 1/2"	2'-6 1/2"	8 LITES (2w x 4h)	8 7/8" x 11 1/2"
E	PUSH-OUT CASEMENT	3'-2"	4'-8 1/2"	VIF	12 LITES (2w x 4h)	10" x 12"
F	DOUBLE-HUNG	6'-4 1/2"	6'-0"	VIF	9 OVER 6 (3w x 4h)	10" x 12"

NOTES:
 1. ABOVE FRAME SIZES FOR EAGLE CLAD WINDOW UNITS ARE BASED ON EXISTING 10" X 12" GLASS LITE SIZE/ PROPORTIONS.
 * PUSH OUT CASEMENT & AWNING
 * PUSH OUT FRENCH CASEMENT
 * 2-PIECE FIXED CASEMENT
 * "TALLOW" DOUBLE HUNG
 2. VERIFY ROUGH OPENING SIZES AND SILL HEIGHTS FOR GROUND FLOOR UNITS SET INTO EXISTING CONSTRUCTION
 3. Windows will have custom MDLs and will be finished with a custom color to match existing paint.

- #### PLAN NOTES:
- SEE G-001 FOR GENERAL PROJECT NOTES, LEGENDS AND ABBREVIATIONS.
 - SEE G-002 FOR GENERAL MOUNTING HEIGHTS, TOP OF WALL DETAILS AND PARTITION TYPES.
 - CONTRACTOR IS RESPONSIBLE FOR REVIEWING CODE COMPLIANCE PLANS AND NOTIFYING THE ARCHITECT OF CONFLICTS BETWEEN WHAT IS IN THE FIELD AND ON THE CODE DOCUMENTS.
 - DIMENSIONS ARE FACE OF CONCRETE, FACE OF MASONRY AND CENTERLINE OF STUD, UNLESS NOTED OTHERWISE.
 - DOOR JAMBS (HINGE SIDE) SHALL BE 6" FROM CORNER IN STUD PARTITIONS AND 8" FROM CORNER IN MASONRY PARTITIONS UNLESS NOTED OTHERWISE.
 - REFER TO DETAILS FOR ADDITIONAL DIMENSIONING INFORMATION.
 - REFER TO ENLARGED PLANS FOR PARTITION TYPES AND DIMENSIONS IN AREAS WHICH ARE DETAILED AT A LARGER SCALE.
 - FURNITURE AND OWNER PROVIDED EQUIPMENT ARE INDICATED BY DASHED LINE TYPE.
 - CONTRACTOR IS RESPONSIBLE FOR THE COORDINATION OF OWNER PROVIDED EQUIPMENT INCLUDING BUT NOT LIMITED TO DIMENSIONAL INFORMATION, AND MECHANICAL, ELECTRICAL AND PLUMBING REQUIREMENTS.



A7 2ND FLOOR PLAN
1/4" = 1'-0"

14 Fore Street, P.O. Box 618
Portland, Maine 04104
Tel: (207) 775-3846
Fax: (207) 775-1070
www.smrtinc.com

SMRT
ARCHITECTURE
ENGINEERING
PLANNING
INTERIORS
ENERGY

LICENSED ARCHITECT
PETER C. ANDERSON
172-234
9-22-15

332 DANFORTH STREET
Enter address here

ISSUED FOR CONSTRUCTION
9-4-15

CURRENT ISSUE STATUS:

REV	DESCRIPTION	DATE
1	WINDOW SCHEDULE, EGRESS, FINISH LINES, GROUND FLOOR	9-22-15

GRAPHIC SCALE: 0" = 1"

SCALE: As indicated

PROJECT MANAGER: PCA
 JC/DRAWN BY: XXX/MOH
 A/E OF RECORD: PCA
 PROJECT NO: 15055
 SMRT FILE: AE100-15055
 DATE: 9-4-15

SHEET TITLE:
2ND FLOOR PLAN

SHEET No.
AE100

© copyright 2015 SMRT Inc.