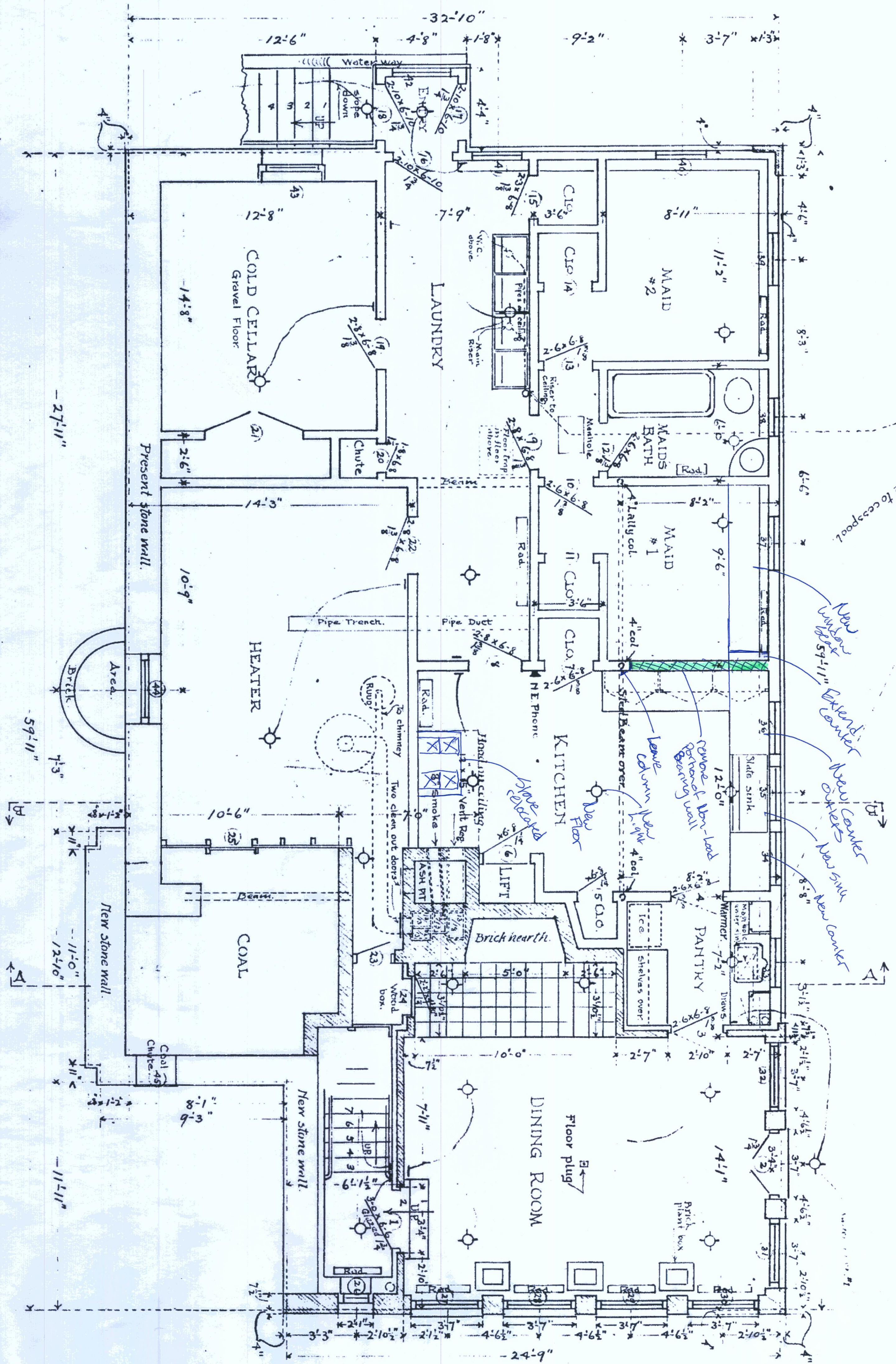


HOUSE AT 322 DANFORTH ST.  
FOR MRS WALTER W. FOGG.

BASEMENT  
Scale  $\frac{1}{4} = 1'-0"$  NOTE  
Scale



DIMENSIONS  
are given on face of stud  
which is 4" back of brick.  
See sections on sheets #4 & #9.

JOHN CALVIN STEVENS  
JOHN HOWARD SILVENS  
Architects, Fordham, Me.

SHEET  
1