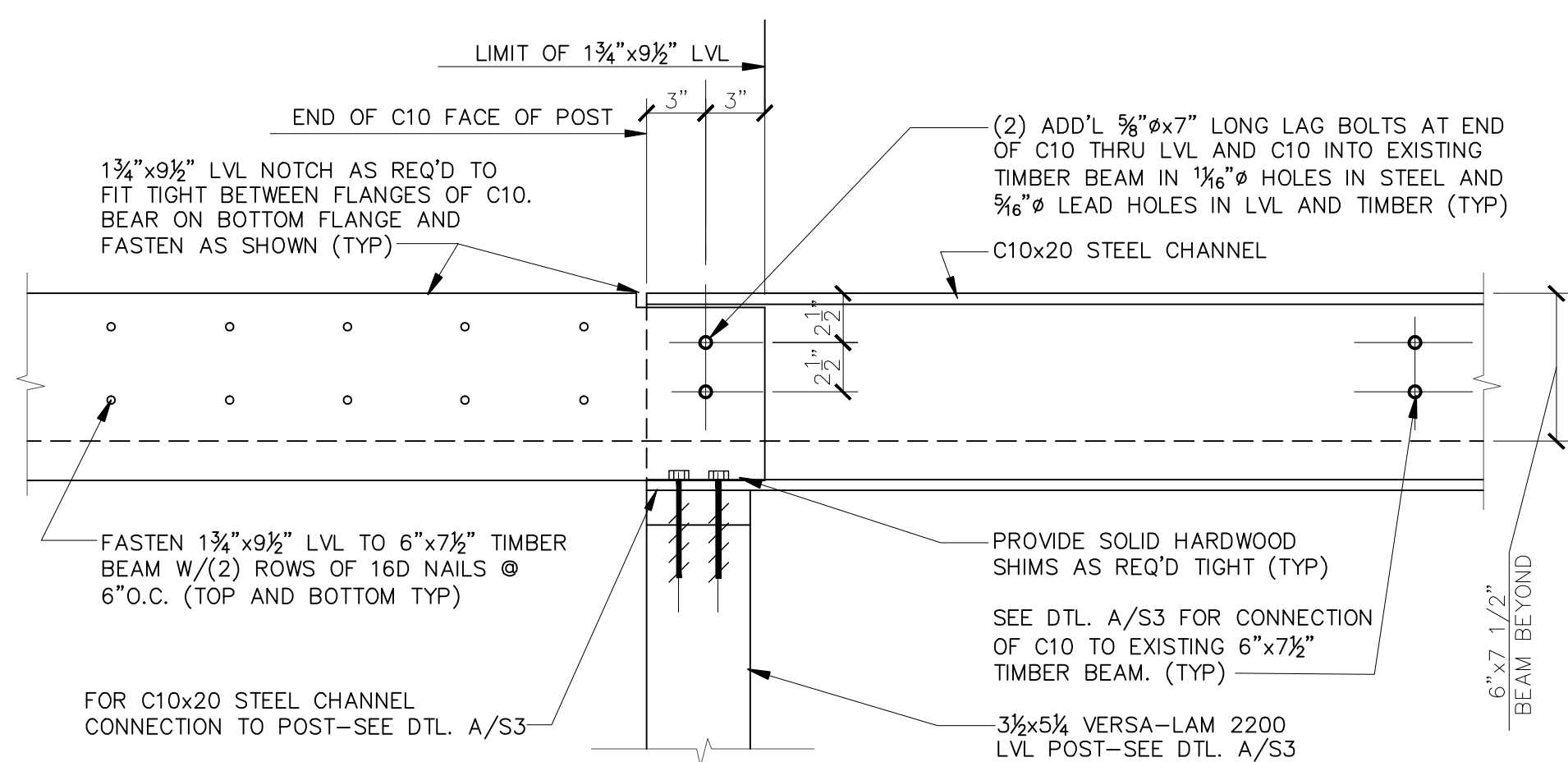
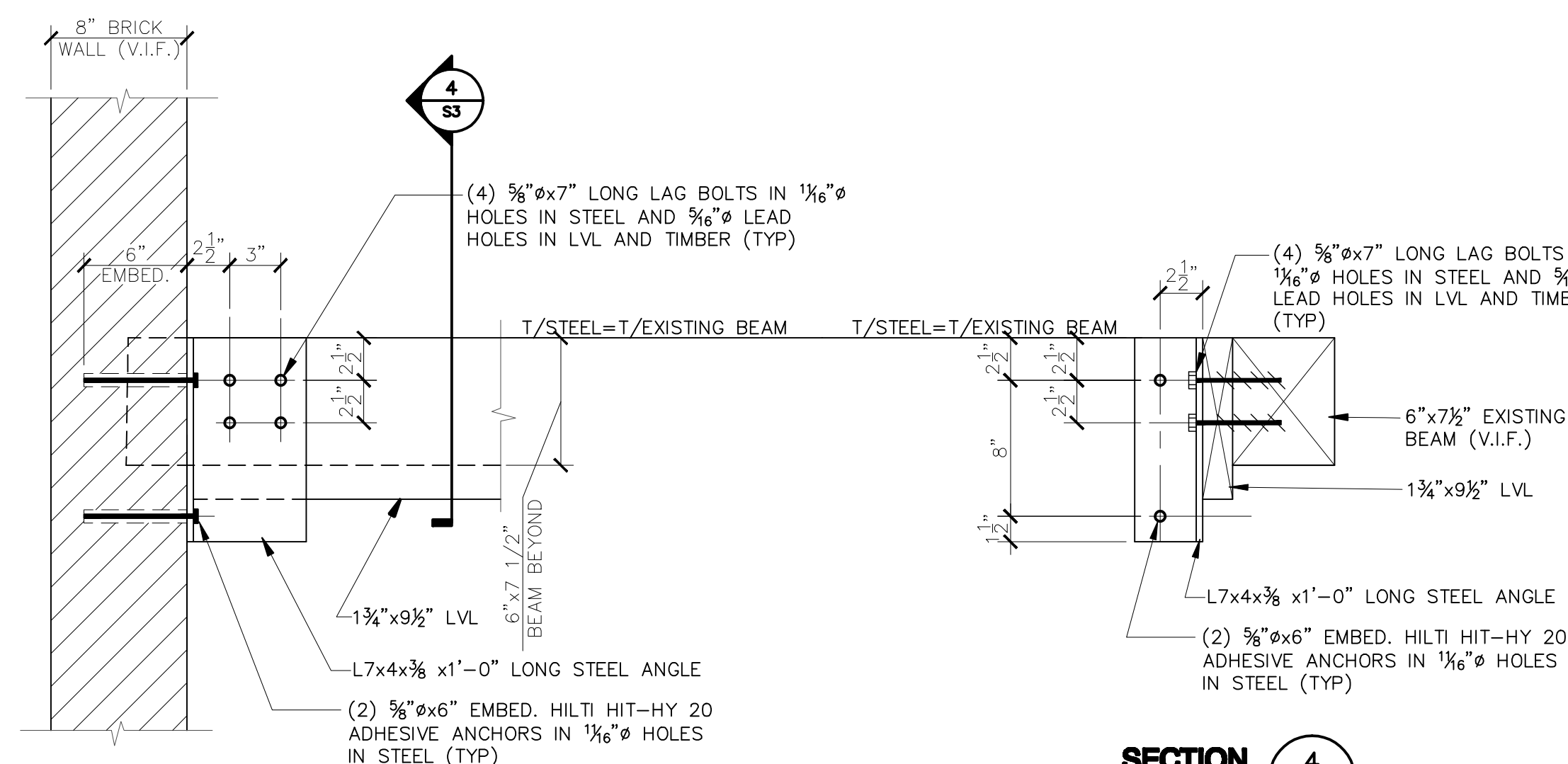


TYPICAL CROSS SECTION 1
1 1/2" = 1'-0"

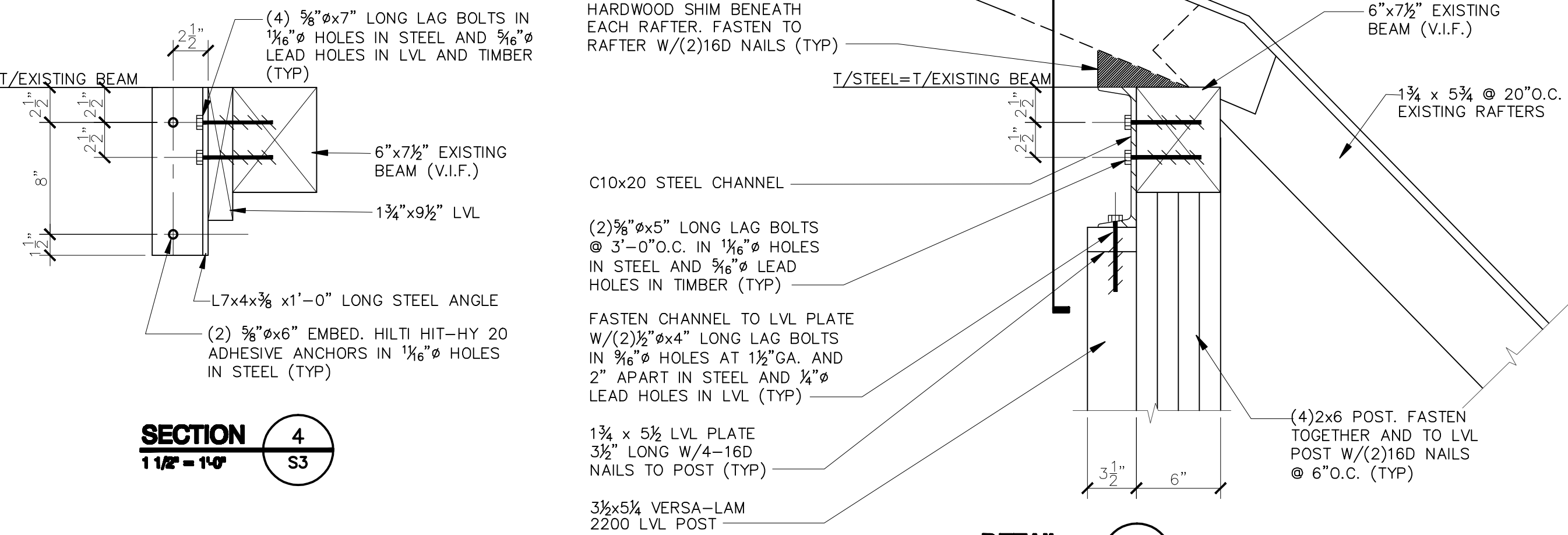
- NOTE:
1. ALL WOOD SCREWS SHALL BE 1 1/2" MIN. APART, 1 1/2" FROM EDGE OF MATERIAL AND 2 1/2" MIN. FROM THE END OF THE MEMBER. (TYP)
 2. ALL CONSTRUCTION ADHESIVE SHALL BE APPLIED AND SCREEDED INTO A THIN LAYER ACROSS THE ENTIRE WIDTH x LENGTH OF THE CONTACT SURFACE. (TYP)
 3. ALL THE JOISTS (BOTTOM CHORD), VERTICAL WEBS AND DIAGONAL WEBS SHALL BE INSTALLED ON THE SAME SIDE OF THE EXISTING RAFTER. (TYP)



SECTION 2
1 1/2" = 1'-0" S2,3

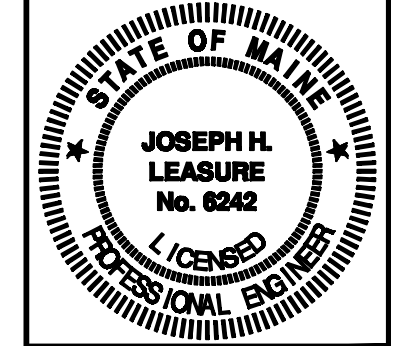


SECTION 3
1 1/2" = 1'-0" S2



DETAIL A
1 1/2" = 1'-0" S3

L & L STRUCTURAL ENGINEERING SERVICES, INC.
SIX Q. STREET
SOUTH PORTLAND, MAINE 04106
PHONE: (207) 767-4830
FAX: (207) 799-5432



rev.	date	description	approved

designed by: JHL
drawn by: AKB
checked by: JHL
scale: AS NOTED
date: 3-22-11
plot date: 3-22-11
project #: 2011-019

25 STORER STREET RENOVATION
PORTLAND, MAINE
SECTIONS AND DETAILS

S3

THESE DRAWINGS HAVE BEEN DEVELOPED BY L&L STRUCTURAL ENGINEERING SERVICES, INC. FOR THE TITLED SET ONLY. THE DRAWINGS ARE THE SOLE PROPERTY OF L&L ENGINEERING SERVICES, INC. AND THEY SHALL NOT BE USED, LENT, COPIED OR ALTERED WITHOUT THE WRITTEN CONSENT OF L&L STRUCTURAL ENGINEERING SERVICES, INC.