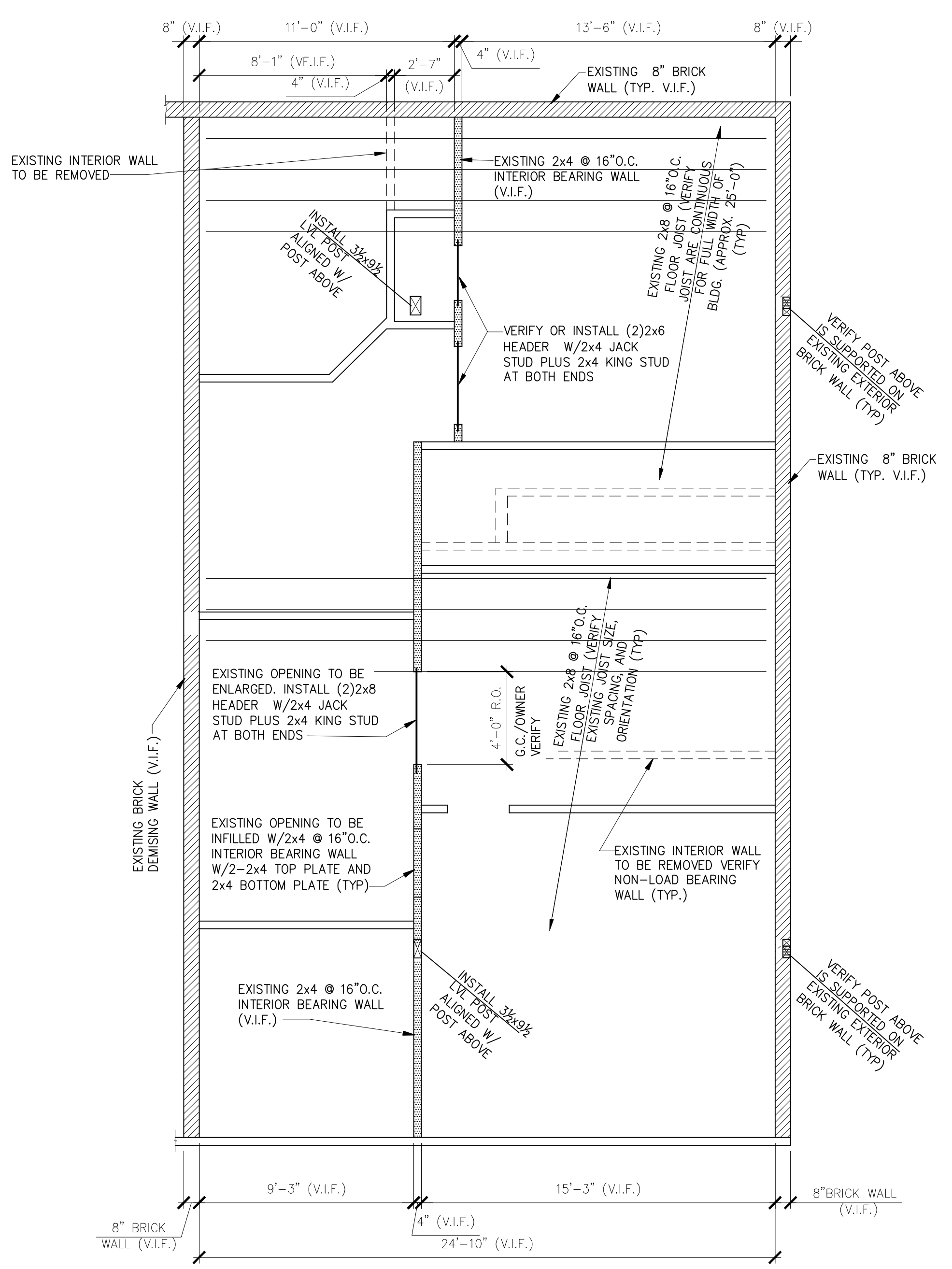
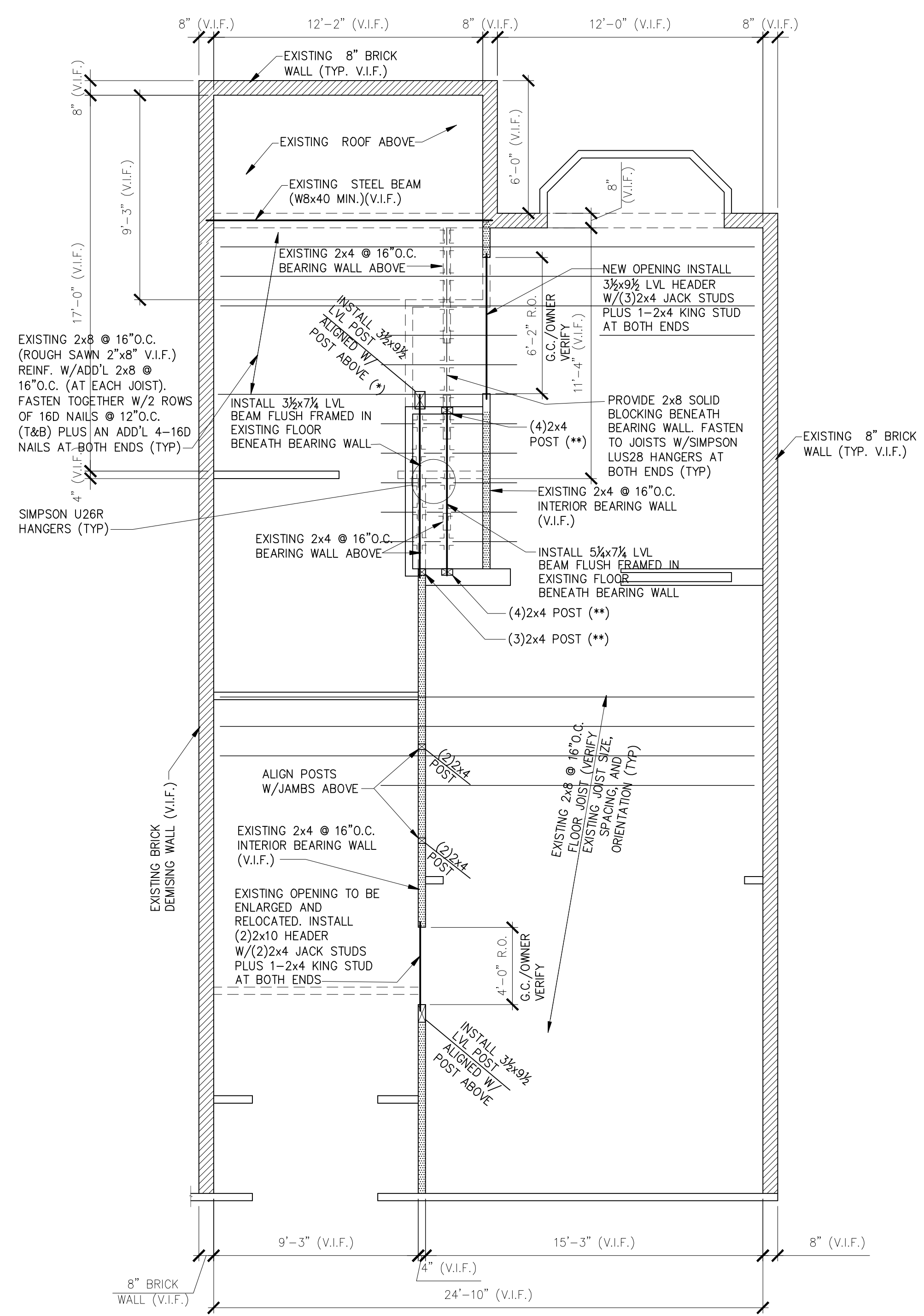


**ROOF FRAMING PLAN (THIRD FLOOR PLAN)**  
1/4" = 1'-0"



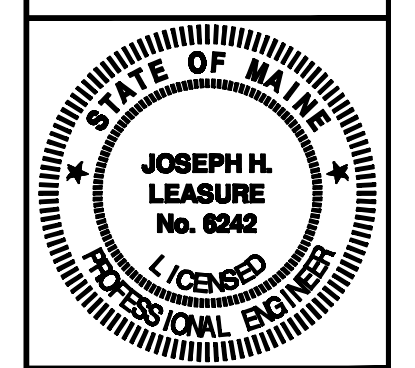
**THIRD FLOOR FRAMING PLAN (SECOND FLOOR PLAN)**  
1/4" = 1'-0"



**SECOND FLOOR FRAMING PLAN (FIRST FLOOR PLAN)**  
1/4" = 1'-0"

- NOTE:
1. "\*" INDICATES: PROVIDE (2) 3/2"Ø CONCRETE FILLED LALLY COLUMNS IN BASEMENT BENEATH LVL POST ABOVE. PROVIDE SOLID VERTICAL BLOCKING WITHIN FIRST FLOOR SYSTEM BETWEEN LALLY COLUMN AND LVL POST. SUPPORT DOUBLE LALLY COLUMN ON 3'-0" SQ. x 12" THICK CONCRETE FOOTING W/6-#4 EACH WAY 3" CLEAR FROM BOTTOM OF FOOTING.
  2. "\*\*" INDICATES: PROVIDE 3/2"Ø CONCRETE FILLED LALLY COLUMN IN BASEMENT BENEATH TIMBER POST ABOVE. PROVIDE SOLID VERTICAL BLOCKING WITHIN FIRST FLOOR SYSTEM BETWEEN LALLY COLUMN AND TIMBER POST. SUPPORT LALLY COLUMN ON 2'-0" SQ. x 10" THICK CONCRETE FOOTING W/3-#4 EACH WAY 3" CLEAR FROM BOTTOM OF FOOTING.

THESE DRAWINGS HAVE BEEN DEVELOPED BY L&L STRUCTURAL ENGINEERING SERVICES, INC. FOR THE TITLED SET ONLY. THE DRAWINGS ARE THE SOLE PROPERTY OF L&L ENGINEERING SERVICES, INC. AND THEY SHALL NOT BE USED, LENT, COPIED OR ALTERED WITHOUT THE WRITTEN CONSENT OF L&L STRUCTURAL ENGINEERING SERVICES, INC.



rev.	date	description

designed by: JHL  
drawn by: AKB  
checked by: JHL  
scale: AS NOTED  
date: 3-22-11  
plot date: 3-22-11  
project #: 2011-019

