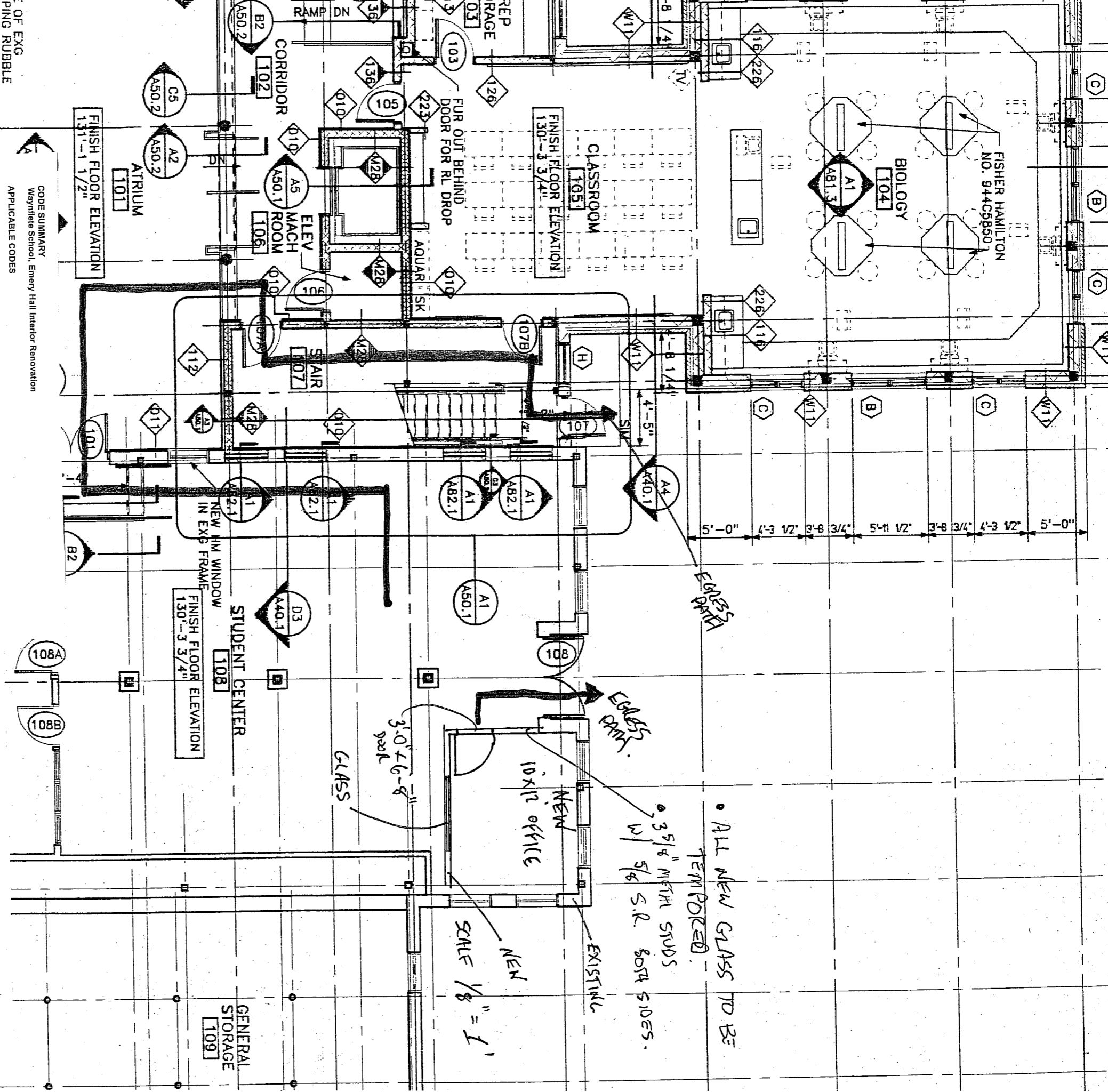


WINDFLEET EMERY ST. OFFICE



• ALL NEW GLASS TO BE  
TEMPORED.  
• 3 5/8" METH STUDS  
w/ 5/8" S.R. BOTH SIDES.

NEW SCALE 1/8" = 1'

CODE SUMMARY  
Waynflete School, Emery Hall Interior Renovation

APPLICABLE CODES

- 2009 International Building Code (IBC)
- 2009 International Existing Building Code (IEBC)
- 2009 International Energy Conservation Code (IECC)
- 2007 ASHRAE 62.1 (Ventilation for Acceptable Indoor Air Quality)
- 2011 National Electrical Code (NEC)

Fire/Life Safety

NFPA Life Safety Code as adopted by the State of Maine including but not limited to:

- 2009 NFPA 101: Life Safety Code
- 2007 NFPA 13: Installation of Sprinkler Systems, [2010 Edition through Equivalency]

Accessibility

1991 Americans with Disabilities Act / ADAAG 36 CFR

NOTE: All Codes shall include changes/amendments by the State of Maine

Existing Building: Renovated Space: 120 SF  
Out of Scope Work: Existing Building currently protected by automatic sprinkler system in compliance with 2007 NFPA 13 and addressable fire alarm system.

Building Use	NFPA 2009	IBC 2009
1. Building Classification by Occupancy	Existing Educational	Educational Group E Section 305.1
2. Construction Type	Existing	Existing Type IV
3. Occupancy Load	Table 7.3.3.1.2 Educational Use 20 SF Net 120 SF / 20 SF = 6 Occupants	Table 1004.1.1 Educational 20 net sf per occupant 120 SF / 20 SF = 6 Occupants
4. Occupant Calculations		
5. Unit of exit width	Table 7.3.3.1 Occupants 6 x 0.2' = 1.2' 36' provided	Table 1005.1 (with Sprinkler System) Occupants 6 x 0.2' = 1.2' 36' provided

