

---

## 9. CONSTRUCTION MANAGEMENT PLAN

The proposed development will be constructed in a single phase. On-site work for this project is anticipated to begin in 2017. All erosion and sediment control measures will be installed prior to any soil disturbance. The project contractor will be required to submit a detailed construction management plan for review by the City of Portland prior to the start of construction. A Logistics Plan has been attached to this Section, which notes the sequence and layout for construction activities.

### 9.1 ATTACHMENTS

- Logistics Plan

# WAYNFLETE SCHOOL LOGISTICS PLAN E: LOWER SCHOOL, FOUNDERS, GYM & CONNECTOR

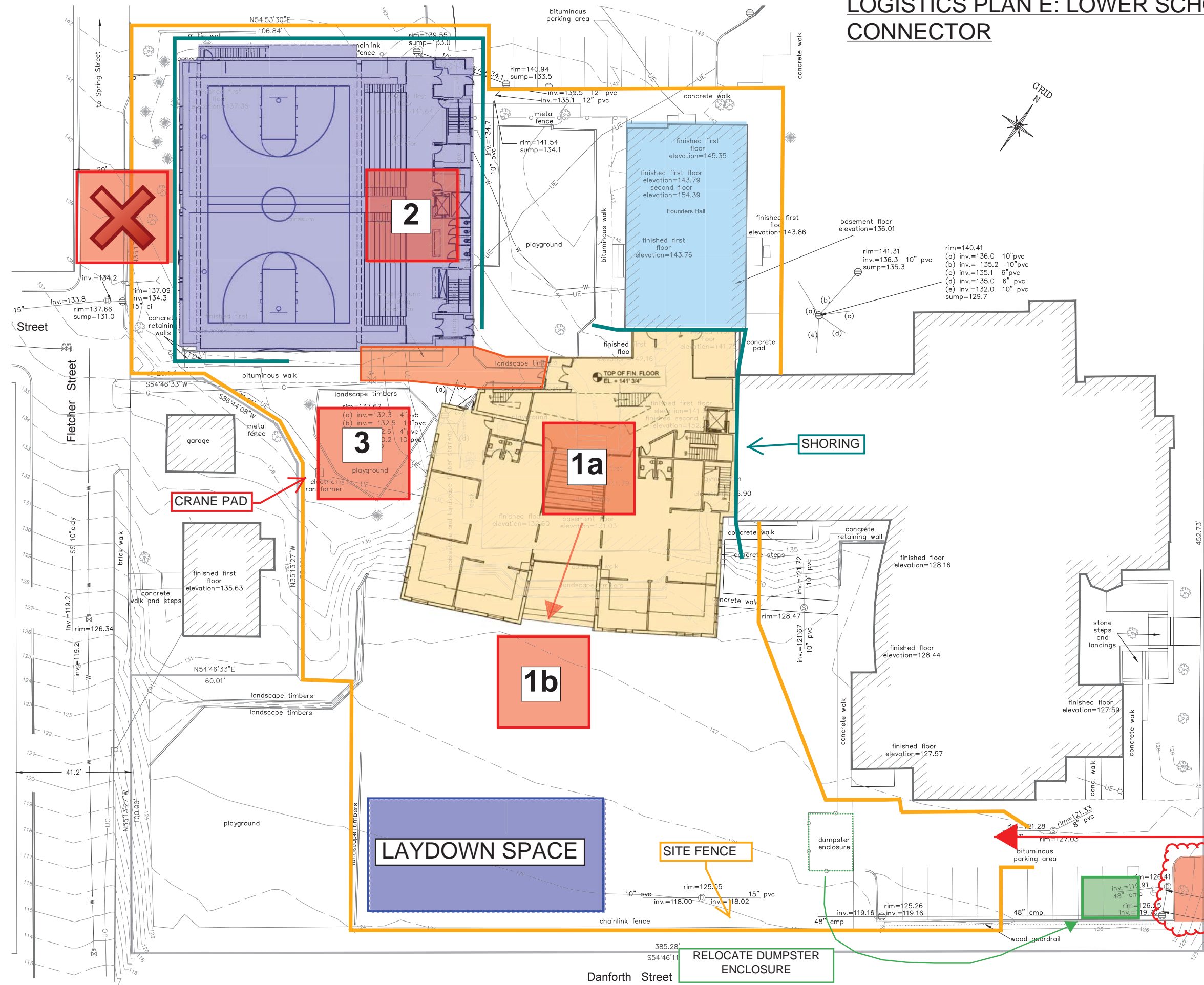
**WR** 11/16/15  
Wright-Ryan

**NOTES:**

**SEQUENCE: GYM, CONNECTOR, FOUNDERS, LOWER SCHOOL**

**CRANE PADS:**  
 1a: FIRST LOCATION  
 1b: SECOND LOCATION  
 2. LOCATION FOR GYM BIG STEEL  
 3. INTERMEDIARY LOCATION  
 X. MULTIPLE ELECTRICAL LINES IN THE WAY - NOT LIKELY

**THIS PLAN APPLIES TO THE PROJECT IF ALL CONSTRUCTION TAKES PLACE AT ONCE.**



**CONSTRUCTION ENTRANCE**

REMOVE PLANTINGS FOR DELIVERY ACCESS AND REPLACE WHEN COMPLETE

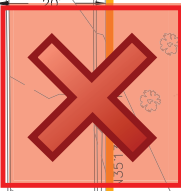
**SITE FENCE**

**RELOCATE DUMPSTER ENCLOSURE**

**CRANE PAD**

**SHORING**

**LAYDOWN SPACE**



**2**

**3**

**1a**

**1b**



Danforth Street

Street

Fletcher Street

to Spring Street

385.28'

S54°46'11"

Danforth Street

452.73'

N34°53'43"W

N54°46'33"E

60.01'

N35°13'27"W

inv.=119.2

rim=126.34

inv.=119.2

SS 10° eady

inv.=119.2

SS 10° eady

inv.=119.2

SS 10° eady

inv.=119.2

SS 10° eady

inv.=119.2

SS 10° eady

inv.=119.2

SS 10° eady

inv.=119.2

SS 10° eady

inv.=119.2

SS 10° eady

inv.=119.2

SS 10° eady

inv.=119.2

SS 10° eady

inv.=119.2

SS 10° eady

inv.=119.2

SS 10° eady

inv.=119.2

SS 10° eady

inv.=119.2

SS 10° eady

inv.=119.2

SS 10° eady

inv.=119.2

SS 10° eady

inv.=119.2

SS 10° eady

inv.=119.2

SS 10° eady

inv.=119.2

SS 10° eady

inv.=119.2

SS 10° eady

inv.=119.2

SS 10° eady

inv.=119.2