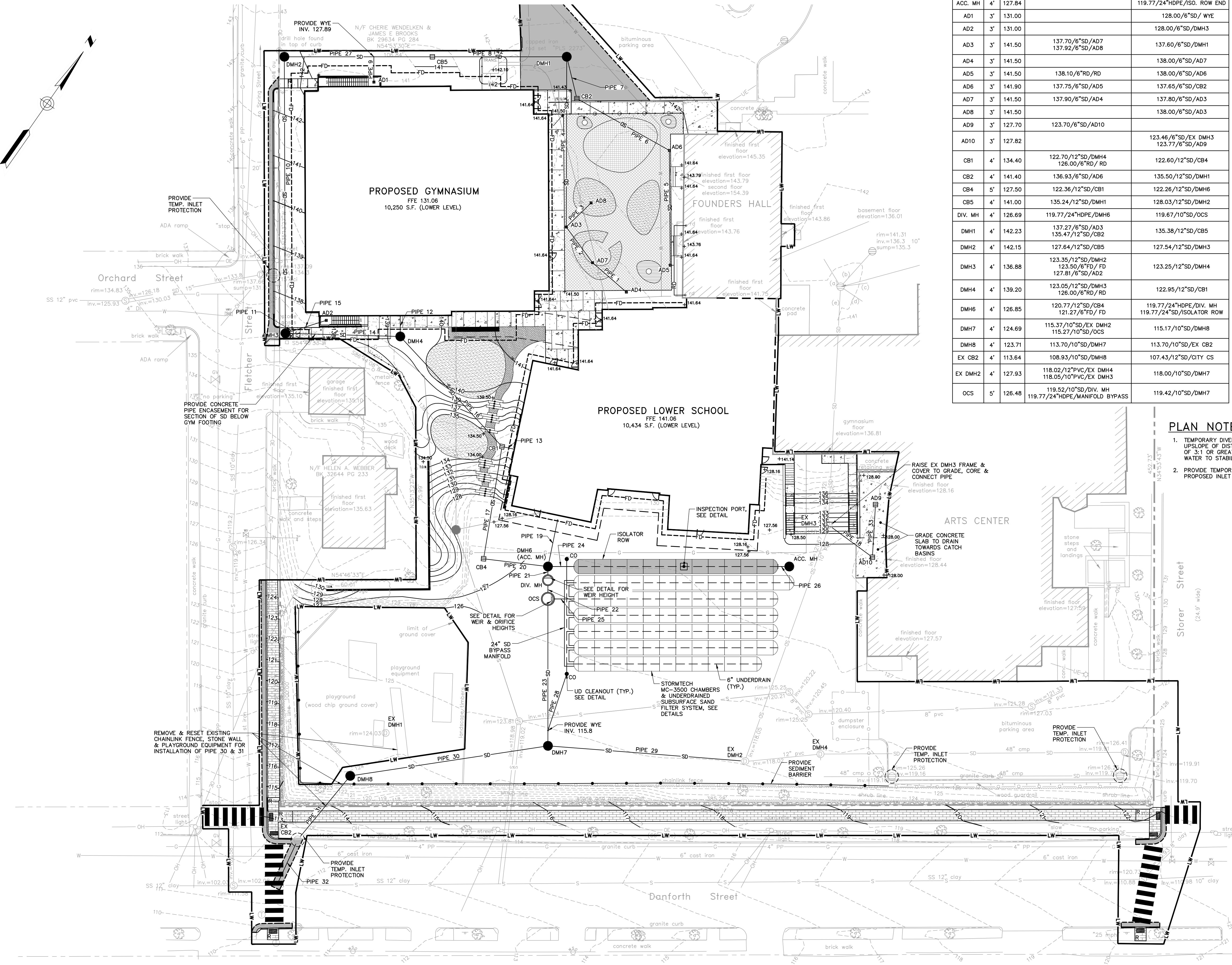


SEE SHEET C-103



| STRUCTURE TABLE | | | | |
|-----------------|------|--------|---|---|
| NAME | DIA. | RIM | INV IN/SIZE/FROM | INV OUT/SIZE/TO |
| ACC. MH | 4' | 127.84 | | 119.77/24"HDPE/ISO. ROW END |
| AD1 | 3' | 131.00 | | 128.00/6"SD/ WYE |
| AD2 | 3' | 131.00 | | 128.00/6"SD/DMH3 |
| AD3 | 3' | 141.50 | 137.70/6"SD/AD7 137.92/6"SD/AD8 | 137.60/6"SD/DMH1 |
| AD4 | 3' | 141.50 | | 138.00/6"SD/AD7 |
| AD5 | 3' | 141.50 | 138.10/6"RD/RD | 138.00/6"SD/AD6 |
| AD6 | 3' | 141.90 | 137.75/6"SD/AD5 | 137.65/6"SD/CB2 |
| AD7 | 3' | 141.50 | 137.90/6"SD/AD4 | 137.80/6"SD/AD3 |
| AD8 | 3' | 141.50 | | 138.00/6"SD/AD3 |
| AD9 | 3' | 127.70 | 123.70/6"SD/AD10 | |
| AD10 | 3' | 127.82 | | 123.46/6"SD/EX DMH3 123.77/6"SD/AD9 |
| CB1 | 4' | 134.40 | 122.70/12"SD/DMH4 126.00/6"RD/ RD | 122.60/12"SD/CB4 |
| CB2 | 4' | 141.40 | 136.93/6"SD/AD6 | 135.50/12"SD/DMH1 |
| CB4 | 5' | 127.50 | 122.36/12"SD/CB1 | 122.26/12"SD/DMH6 |
| CB5 | 4' | 141.00 | 135.24/12"SD/DMH1 | 128.03/12"SD/DMH2 |
| DIV. MH | 4' | 126.69 | 119.77/24"HDPE/DMH6 | 119.67/10"SD/OCS |
| DMH1 | 4' | 142.23 | 137.27/6"SD/AD3 135.47/12"SD/CB2 | 135.38/12"SD/CB5 |
| DMH2 | 4' | 142.15 | 127.64/12"SD/CB5 | 127.54/12"SD/DMH3 |
| DMH3 | 4' | 136.88 | 123.35/12"SD/DMH2 123.50/6"FD/ FD 127.81/6"SD/AD2 | 123.25/12"SD/DMH4 |
| DMH4 | 4' | 139.20 | 123.05/12"SD/DMH3 126.00/6"RD/ RD | 122.95/12"SD/CB1 |
| DMH6 | 4' | 126.85 | 120.77/12"SD/CB4 121.27/6"FD/ FD | 119.77/24"HDPE/DIV. MH 119.77/24"SD/ISOLATOR ROW |
| DMH7 | 4' | 124.69 | 115.37/10"SD/EX DMH2 115.27/10"SD/OCS | 115.17/10"SD/DMH8 |
| DMH8 | 4' | 123.71 | 113.70/10"SD/DMH7 | 113.70/10"SD/EX CB2 |
| EX CB2 | 4' | 113.64 | 108.93/10"SD/DMH8 | 107.43/12"SD/GTY CS |
| EX DMH2 | 4' | 127.93 | 118.02/12"PVC/EX DMH4 118.05/10"PVC/EX DMH3 | 118.00/10"SD/DMH7 |
| OCS | 5' | 126.48 | 119.52/10"SD/DIV. MH 119.77/24"HDPE/MANFOLD BYPASS | 119.42/10"SD/DMH7 |

| PIPE TABLE | | | |
|------------|----------|--------|--------|
| PIPE NAME | SIZE | LENGTH | SLOPE |
| PIPE 1 | 6" SD | 17' | 0.0050 |
| PIPE 2 | 6" SD | 17' | 0.0050 |
| PIPE 3 | 6" SD | 12' | 0.0050 |
| PIPE 4 | 6" SD | 72' | 0.0045 |
| PIPE 5 | 6" SD | 48' | 0.0050 |
| PIPE 6 | 6" SD | 43' | 0.0154 |
| PIPE 7 | 12" SD | 15' | 0.0013 |
| PIPE 8 | 12" SD | 55' | 0.0022 |
| PIPE 9 | 6" SD | 10' | 0.0100 |
| PIPE 10 | 12" SD | 118' | 0.0344 |
| PIPE 11 | 6" FD | 1' | 0.3526 |
| PIPE 12 | 6" RD | 7' | 0.0086 |
| PIPE 13 | 6" RD | 4' | 0.0100 |
| PIPE 14 | 12" SD | 47' | 0.0040 |
| PIPE 15 | 6" SD | 15' | 0.0100 |
| PIPE 16 | 12" SD | 62' | 0.0037 |
| PIPE 17 | 12" SD | 46' | 0.0048 |
| PIPE 18 | 6" SD | 21' | 0.0650 |
| PIPE 19 | 6" FD | 19' | 0.2530 |
| PIPE 20 | 12" SD | 24' | 0.0521 |
| PIPE 21 | 24" HDPE | 2' | 0.0000 |
| PIPE 22 | 10" SD | 4' | 0.0181 |
| PIPE 23 | 10" SD | 60' | 0.0640 |
| PIPE 24 | 24" SD | 9' | 0.0000 |
| PIPE 25 | 24" HDPE | 9' | 0.0000 |
| PIPE 26 | 24" HDPE | 3' | 0.0000 |
| PIPE 27 | 12" SD | 61' | 0.0060 |
| PIPE 28 | 6" SD | 26' | 0.0083 |
| PIPE 29 | 10" SD | 83' | 0.0301 |
| PIPE 30 | 10" SD | 84' | 0.0167 |
| PIPE 31 | 10" SD | 33' | 0.1306 |
| PIPE 32 | 12" SD | 20' | 0.1999 |
| PIPE 33 | 6" SD | 20' | 0.0028 |

PLAN NOTES

- TEMPORARY DIVERSION BARRIERS SHALL BE PLACED UP-SLOPE OF DISTURBED AREAS WITH SUSTAINED GRADES OF 3:1 OR GREATER. DIVERSION BARRIERS SHALL DIRECT WATER TO STABILIZED AREAS ON-SITE.
- PROVIDE TEMPORARY INLET PROTECTION ON ALL PROPOSED INLET STRUCTURES UPON INSTALLATION.

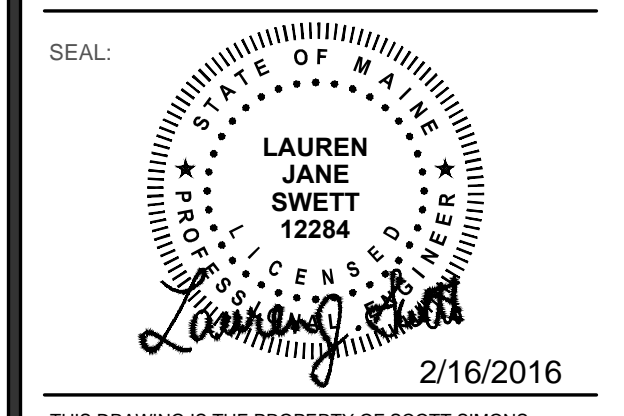
NOT FOR CONSTRUCTION



75 York Street
Portland, Maine 04101
simonsarchitects.com
207.772.4656



PROJECT NAME:
WAYNFLETE GYM + LOWER SCHOOL
NEW CONSTRUCTION
WAYNFLETE SCHOOL
360 SPRING STREET
PORTLAND, MAINE 04102



THIS DRAWING IS THE PROPERTY OF SCOTT SIMONS ARCHITECTS (SSA) AND IS NOT TO BE COPIED OR REPRODUCED IN PART OR WHOLE.
2015 © SCOTT SIMONS ARCHITECTS, LLC

REVISION:

| | |
|---|------|
| 1 | DATE |
| 2 | DATE |
| 3 | DATE |
| 4 | DATE |
| 5 | DATE |
| 6 | DATE |

DATE OF ISSUE: FEBRUARY 2016
PROJECT NUMBER: 229423
STATUS: PLANNING BOARD SUBMISSION

GRADING & DRAINAGE PLAN

C-101

