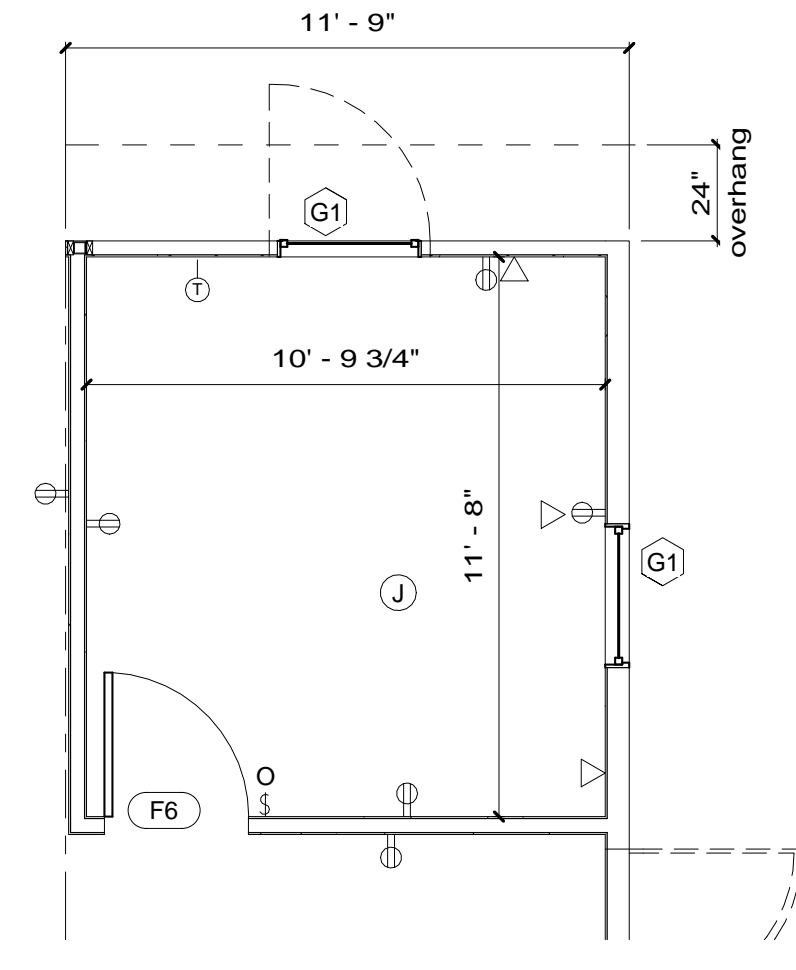
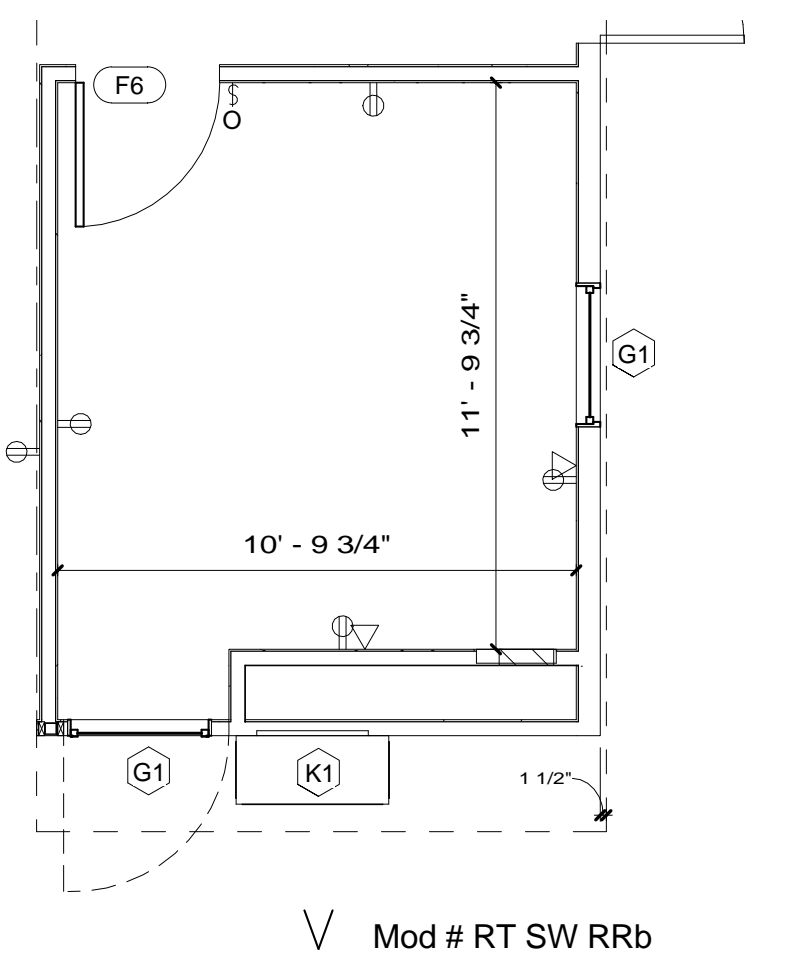


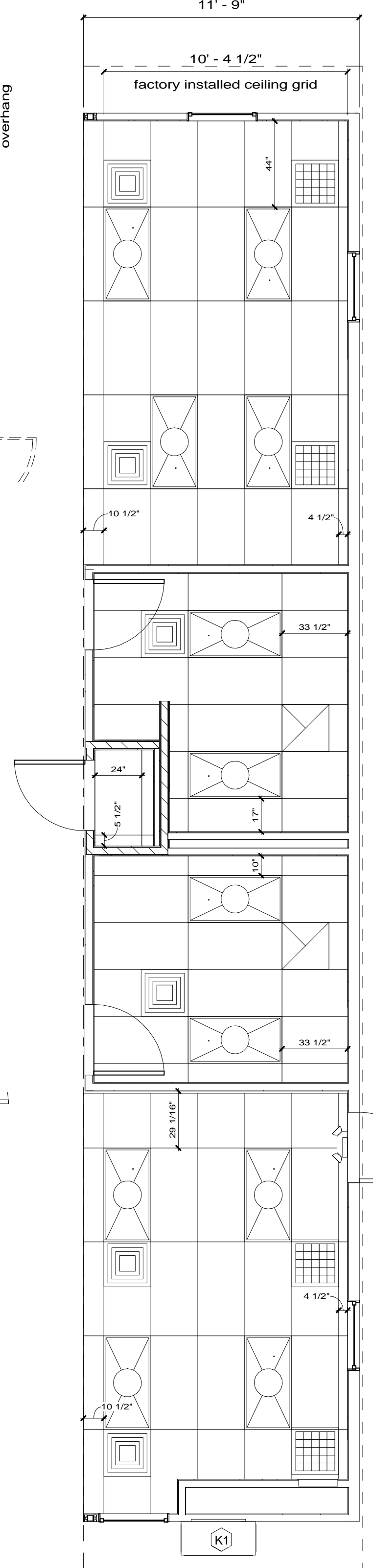
1 Floor Plan  
1/4" = 1'-0"



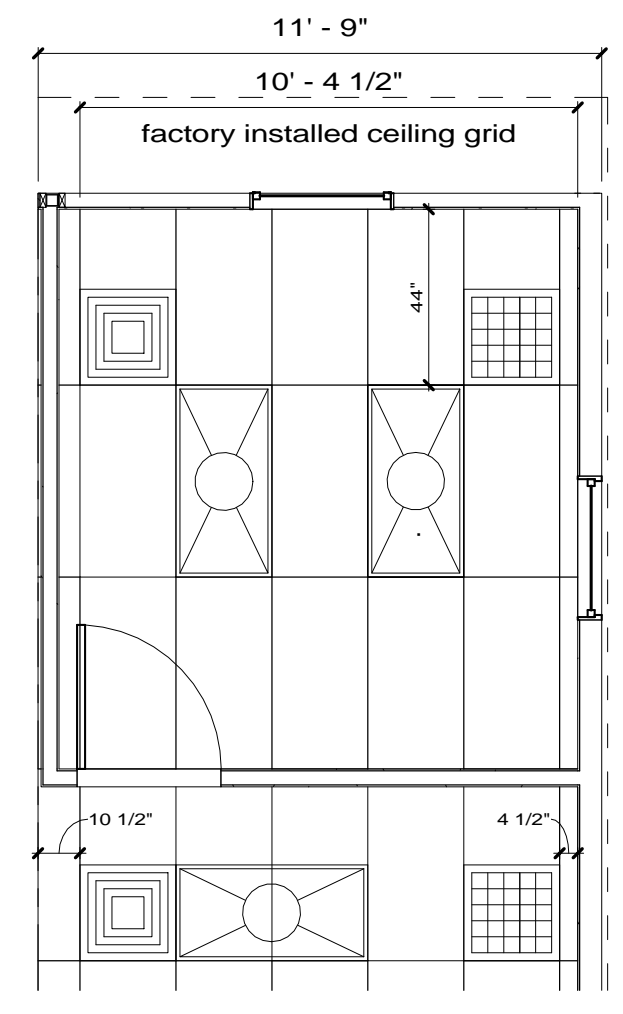
1b Floor Plan  
1/4" = 1'-0"



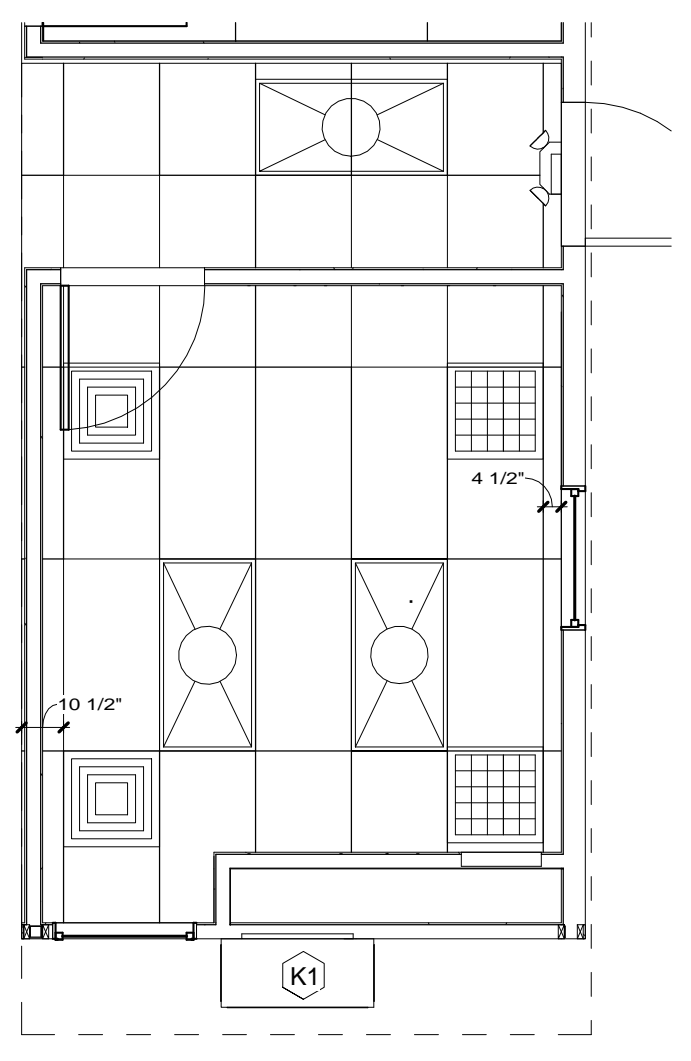
1a Floor Plan  
1/4" = 1'-0"



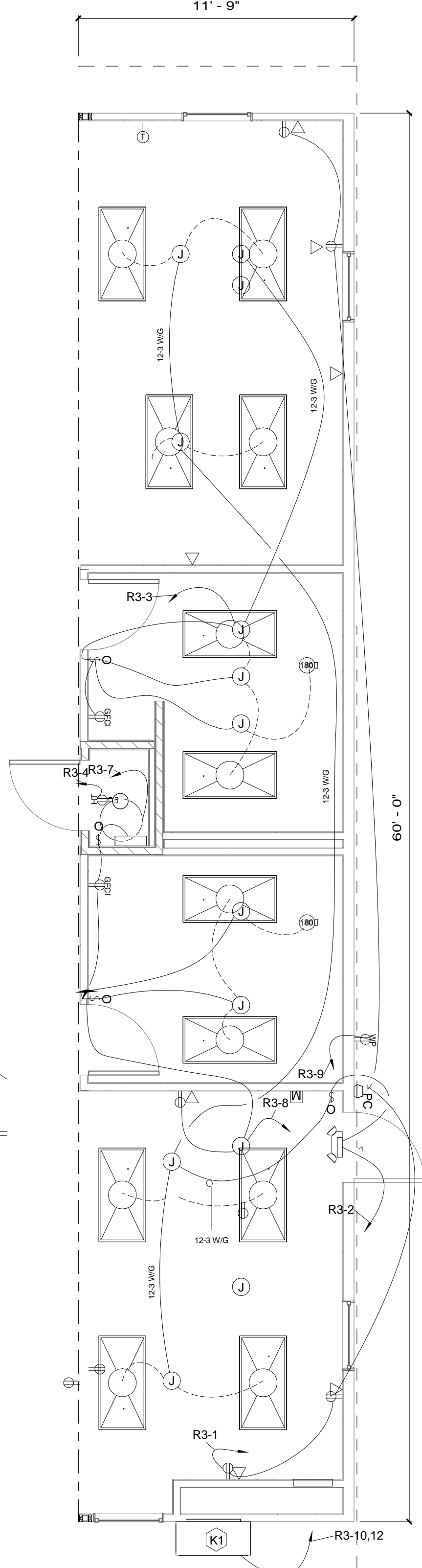
2 Ceiling Plan  
1/4" = 1'-0"



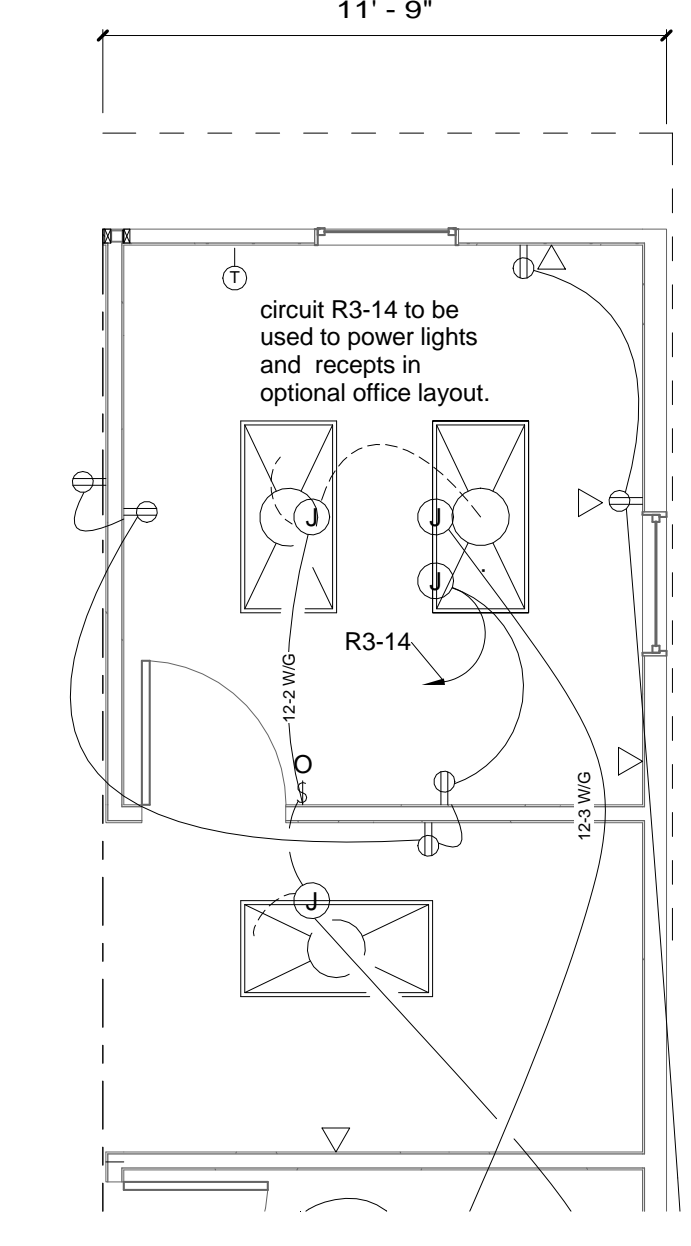
2b Ceiling Plan Office 2 Opt  
1/4" = 1'-0"



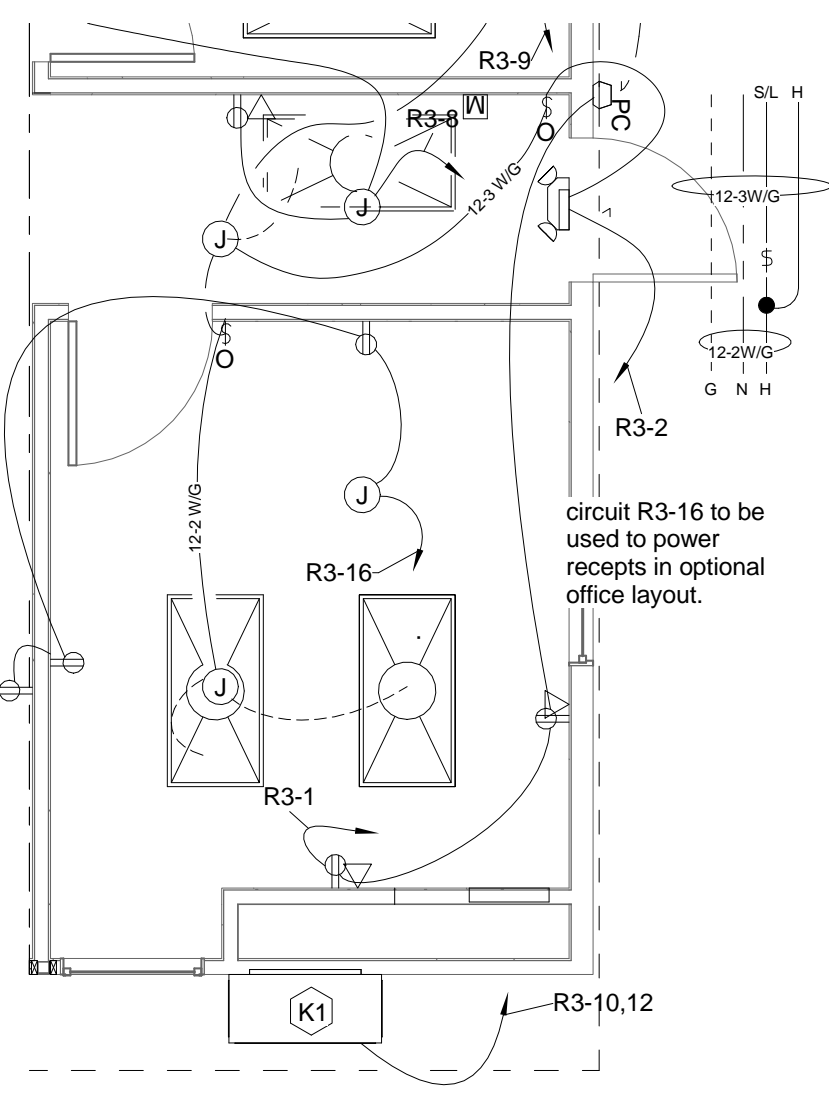
2a Ceiling Plan - Office 1 Opt  
1/4" = 1'-0"



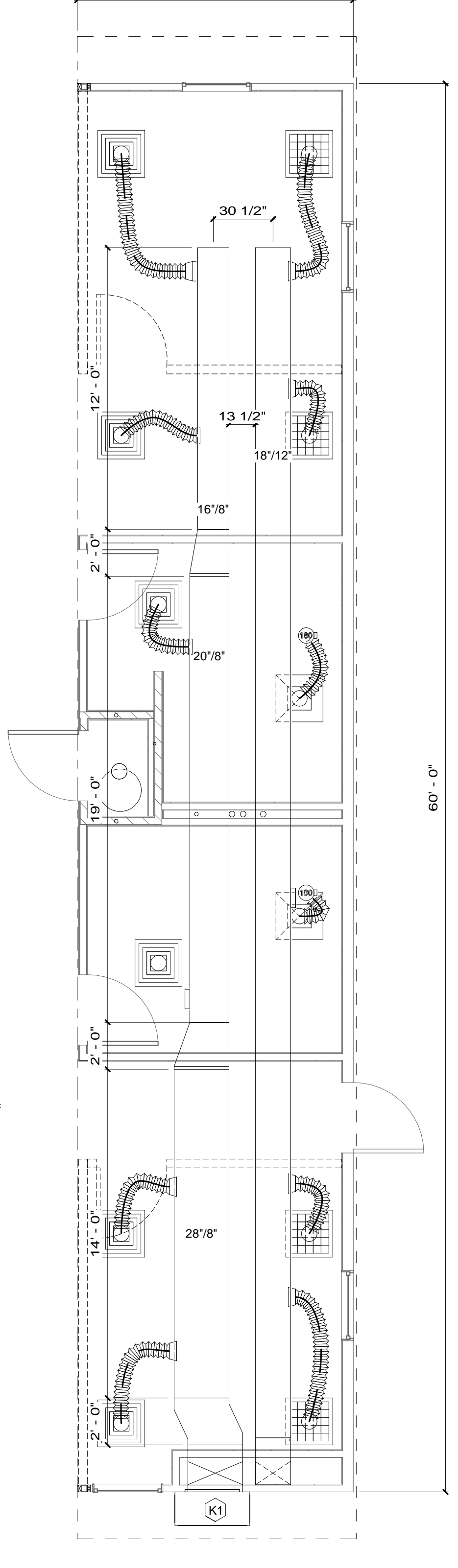
3 Electrical Plan  
1/4" = 1'-0"



3b Electrical Plan - Office Opt  
1/4" = 1'-0"



3a Electrical Plan - Office Opt  
1/4" = 1'-0"



4 Mechanical Plan  
1/4" = 1'-0"

Legend	
[Symbol]	H1
[Symbol]	H8
[Symbol]	EM - H8a
[Symbol]	*H11
[Symbol]	H13
[Symbol]	H18
[Symbol]	REMOTE HEAD
[Symbol]	*H21
[Symbol]	*H22
[Symbol]	*H24
[Symbol]	H25
[Symbol]	H29
[Symbol]	H33
[Symbol]	H35
[Symbol]	H36
[Symbol]	*J13
[Symbol]	*J13a
[Symbol]	*J14
[Symbol]	*J15
[Symbol]	*J17
[Symbol]	*J19
[Symbol]	*J19a
[Symbol]	K4
[Symbol]	K6
[Symbol]	*K8
[Symbol]	K10
[Symbol]	D4b

Note: Identification hexagons on the drawings and in the symbol legend correspond to the project specifications. The letter in the hexagon matches the specification section, the number in the hexagon matches the section number. \* denotes items only in right sidewall modules with restrooms

GA FILE NO. WP 3341  
GYPSUM WALLBOARD, WOOD STUDS  
Base layer 1/4" gypsum wallboard applied parallel to each side of 2 x 4 wood studs 16" o.c. with 4d coated nails, 1 1/2" long, 0.099" shank, 1/4" heads, 12" o.c. Joints staggered 16" on opposite sides. Face layer 1/2" type X plain or predecorated gypsum wallboard or gypsum veneer base applied parallel to each side with 1/4" beads of adhesive 2" o.c. and 6d coated nails, 1 7/8" long, 0.0915" shank, 1/4" heads, 6" o.c. at top and bottom plates only. Offset joints 24" from base layer joints.  
(LOAD-BEARING)

No.	Description	Date	No.	Description	Date
1	revised per third party deviation	6-15-15			

THIS DRAWING AND ALL INFORMATION CONTAINED HEREON IS THE PROPERTY OF WHITLEY MFG. CO. INC. AND IS NOT TO BE REPRODUCED WITHOUT THE EXPRESS PERMISSION OF WHITLEY MFG. CO. INC. ASSUMES NO RESPONSIBILITY FOR UNAUTHORIZED USE OF THIS DRAWING.



201 WEST FIRST STREET  
P.O. BOX 496  
SOUTH WHITLEY, IN 46787  
PHONE: 260.723.5131  
FAX: 260.723.6396  
www.whitleyman.com

2756 FORT WAYNE ROAD  
P.O. BOX 505  
ROCHESTER, IN 46775  
PHONE: 574.223.4824  
FAX: 574.223.8779

64 HESS ROAD  
LEOLA, PA 17540  
PHONE: 717.656.2081  
FAX: 717.656.8149

RIGHT SIDEWALL- MULTI FIXTURE RESTROOM OPTION  
FLOOR/REFLECTED CEILING/ELECTRICAL/MECHANICAL PLANS

Model# 7111  
64'x12' (60'-0"x11'-9" module)

Serial No.	Date:
	3-10-15
Quote No.	Scale:
	As indicated
Model No.	Page No.
7111	
Job No.	Job No.
A2.1.Rb	

7/6/2015 6:51:26 AM