



THIS DRAWING IS THE PROPERTY OF SCOTT SIMONS ARCHITECTS (SSA) AND IS NOT TO BE COPIED OR REPRODUCED IN PART OR WHOLE 2016 © SCOTT SIMONS ARCHITECTS, LLC

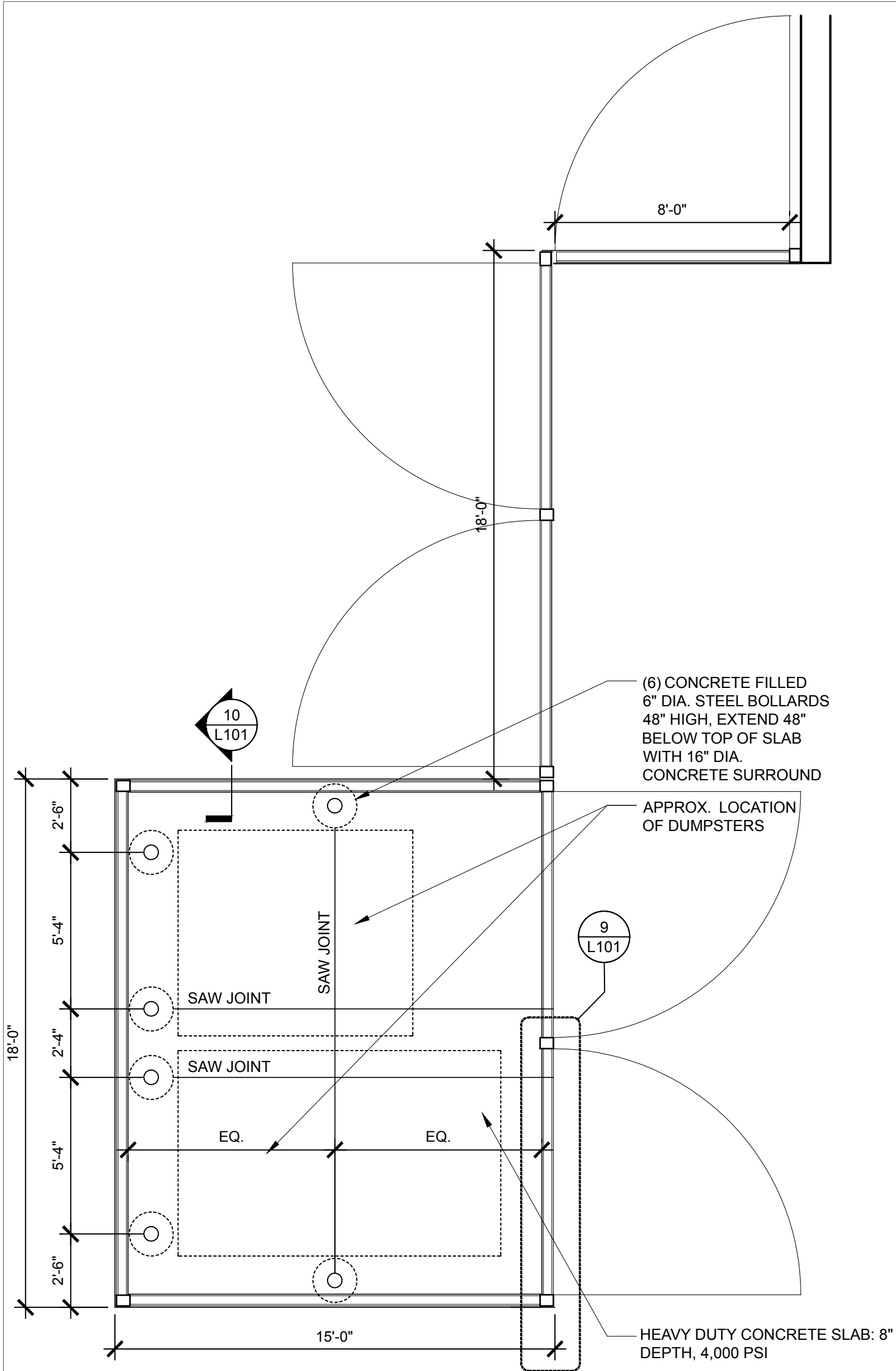
REVISION:

1	DATE
2	DATE
3	DATE
4	DATE
5	DATE
6	DATE

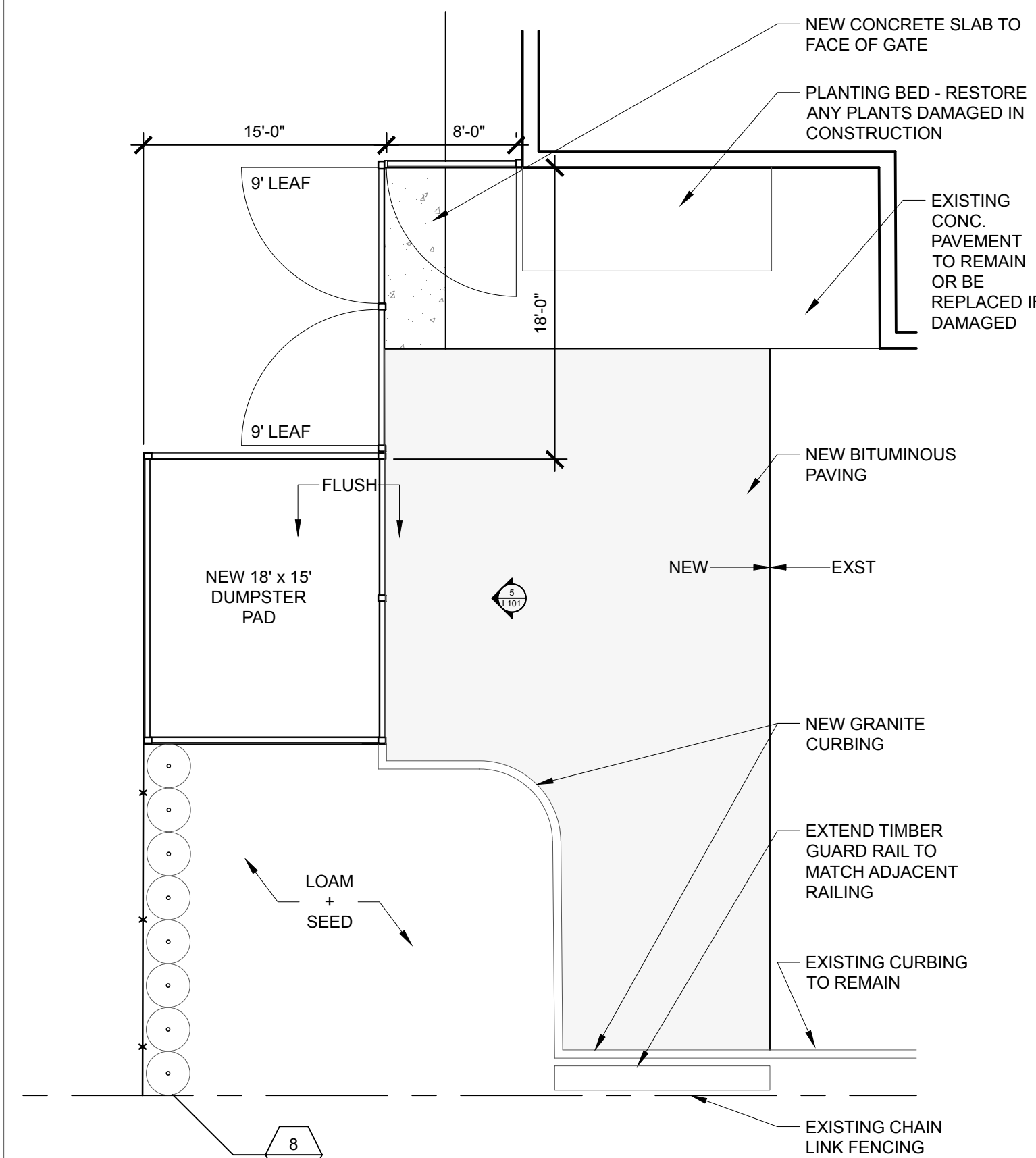
DATE OF ISSUE: 12 JANUARY 2017
PROJECT NUMBER: 2013-0050
STATUS: 100% CONSTRUCTION DOCUMENTS ISSUED FOR BID

**LANDSCAPE
DETAILS**

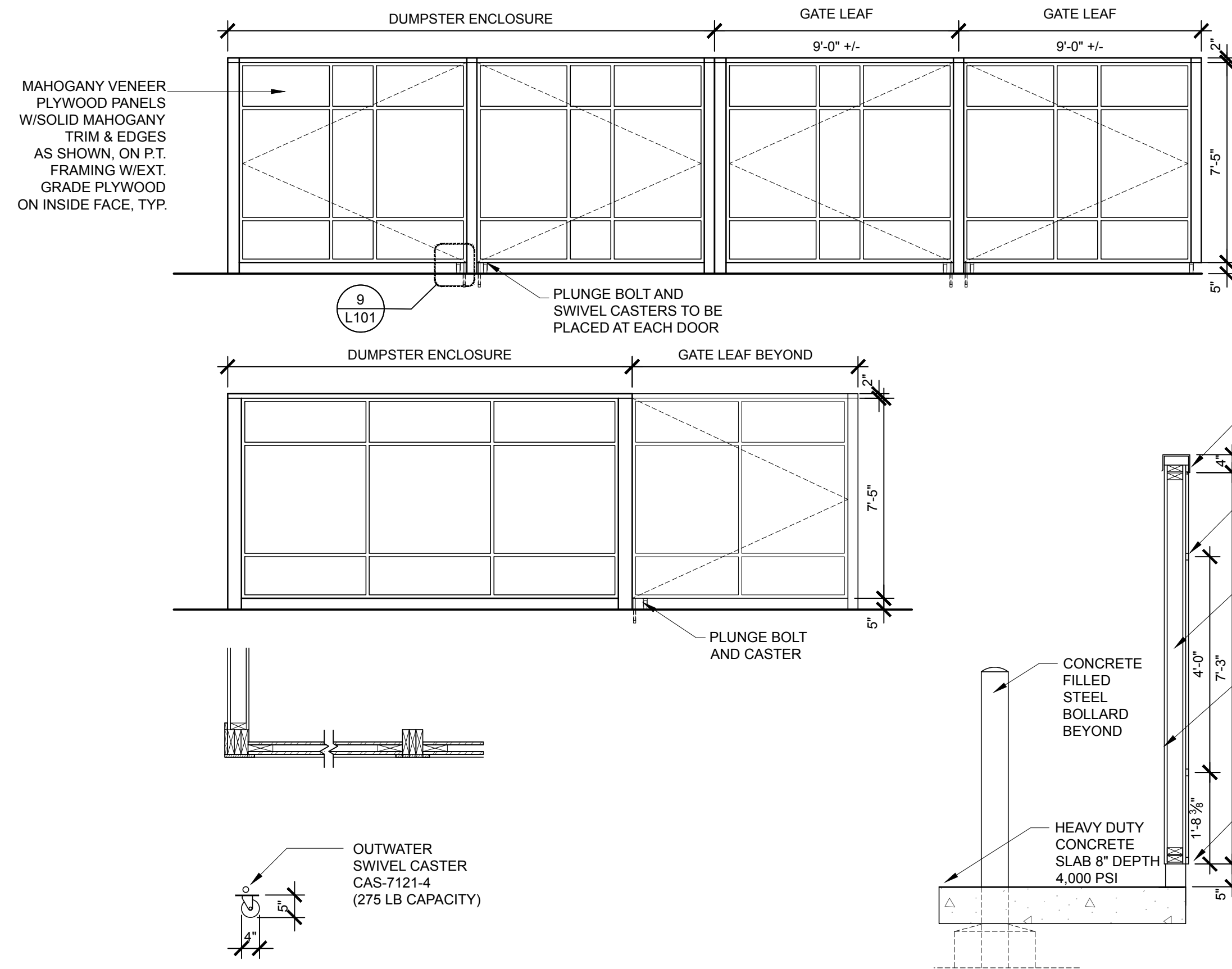
L-101



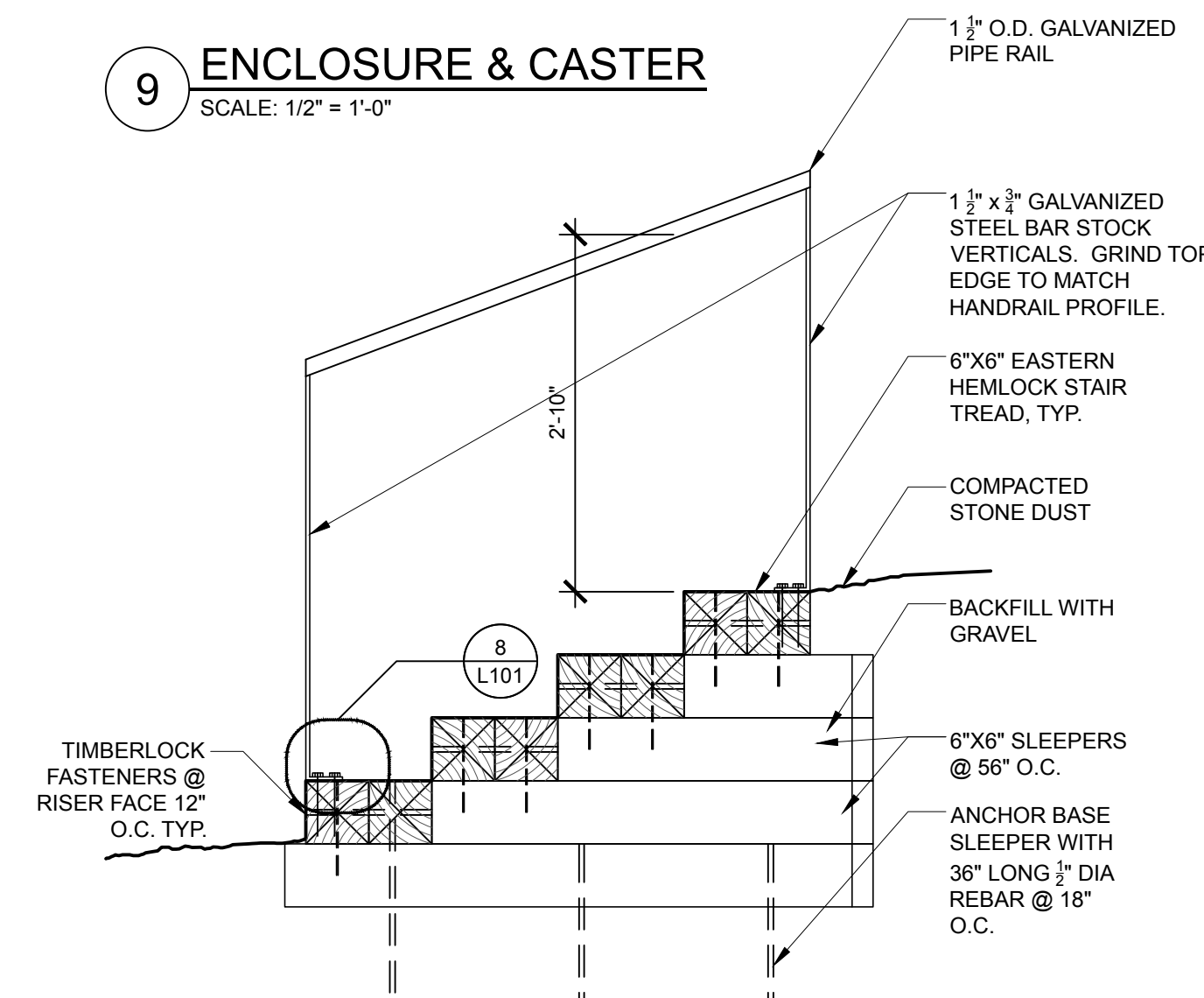
5 DUMPSTER ENCLOSURE PLAN & ELEVATIONS
SCALE: 1/4" = 1'-0"



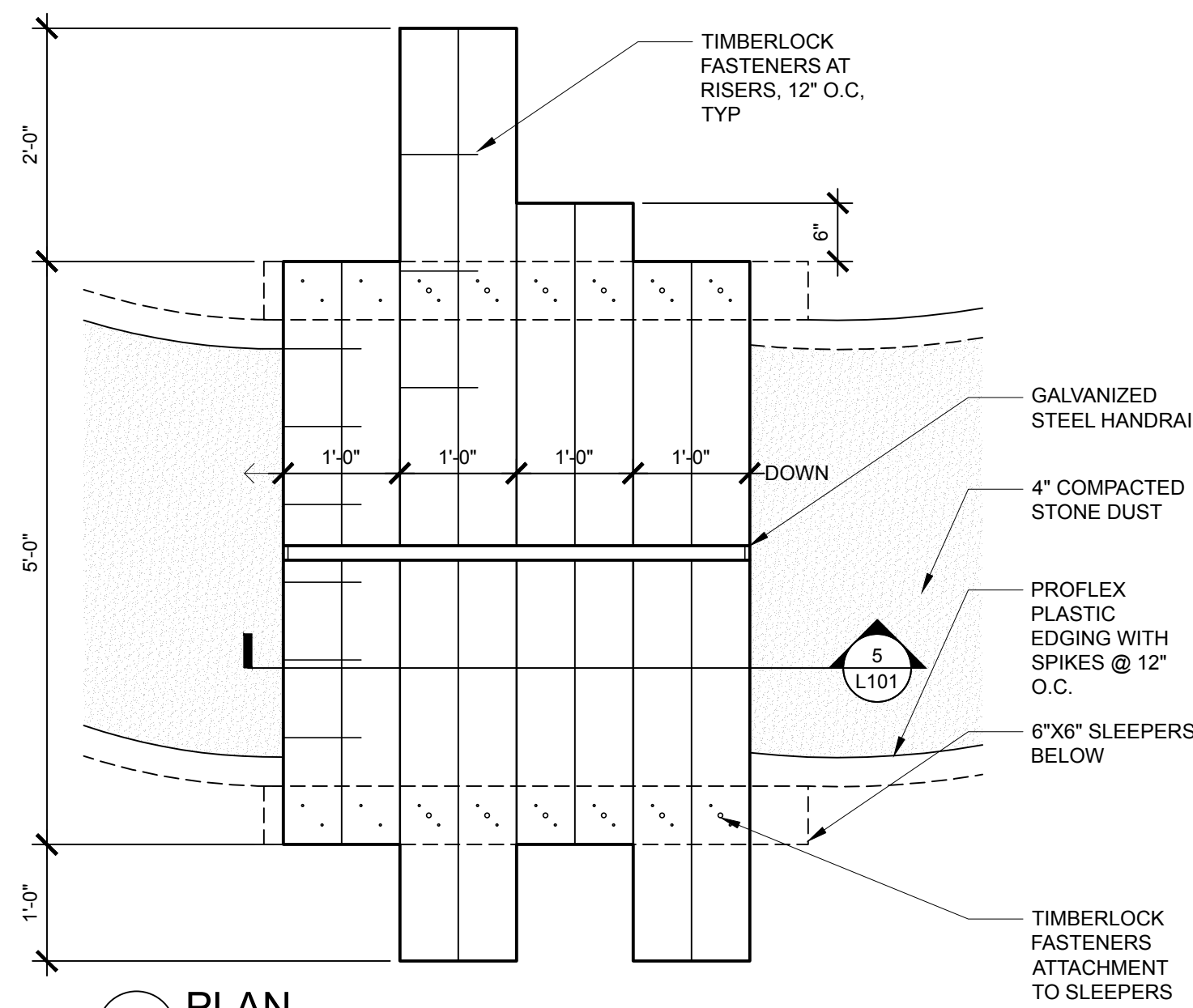
4 DUMPSTER ENCLOSURE PLAN
SCALE: 1/8" = 1'-0"



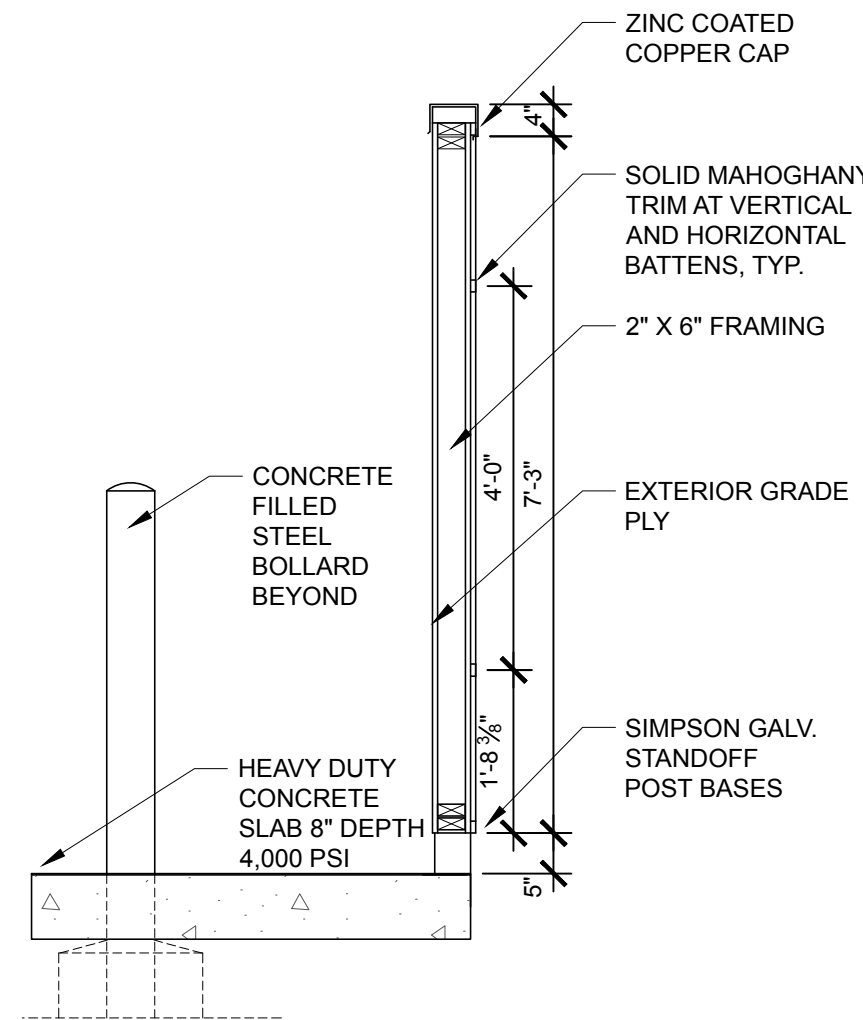
9 ENCLOSURE & CASTER
SCALE: 1/2" = 1'-0"



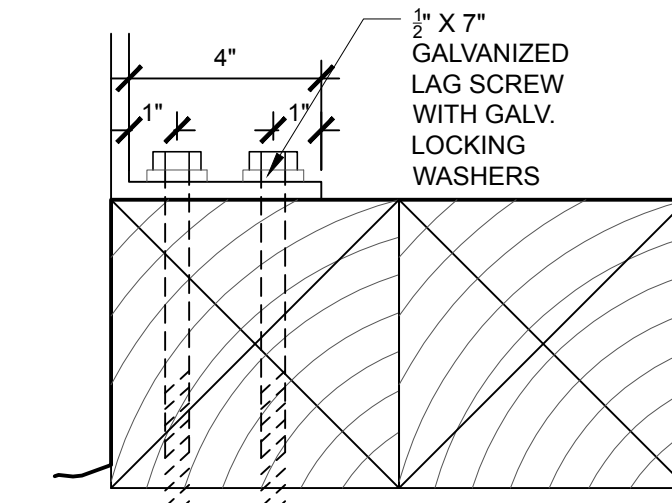
6 SECTION
SCALE: 3/4" = 1'-0" @ 1\"/>



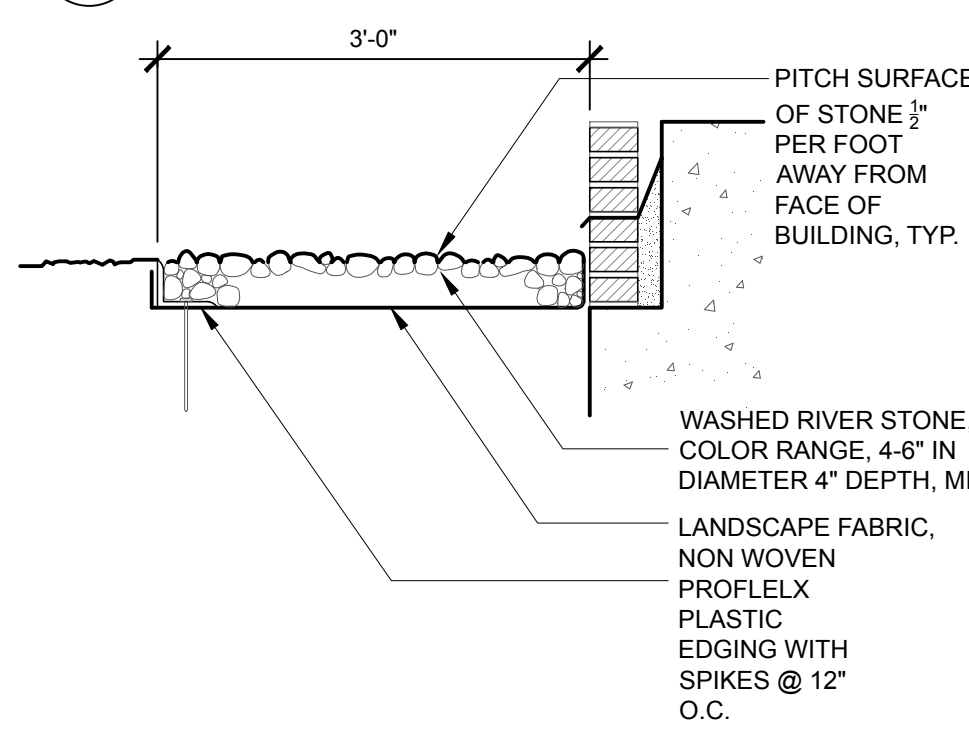
3 PLAN
SCALE: 3/4" = 1'-0"



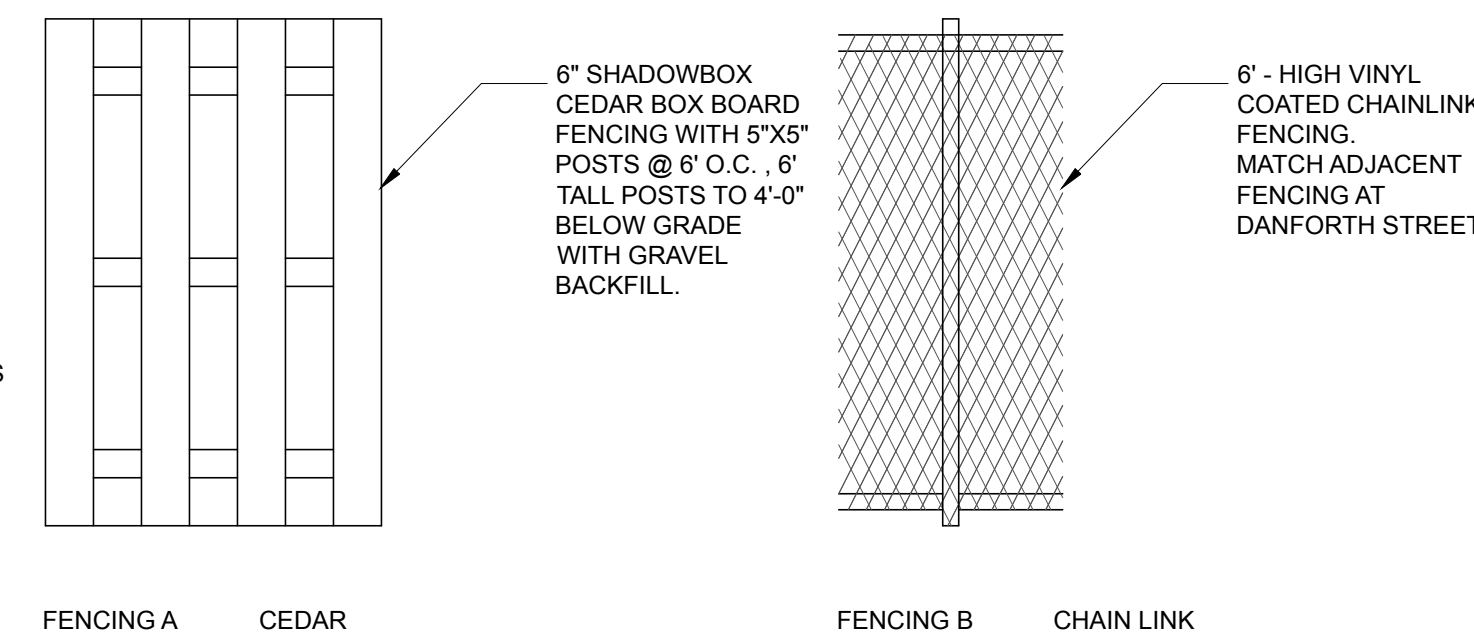
10 DUMPSTER ENCLOSURE WALL SECTION
SCALE: 1/2" = 1'-0"



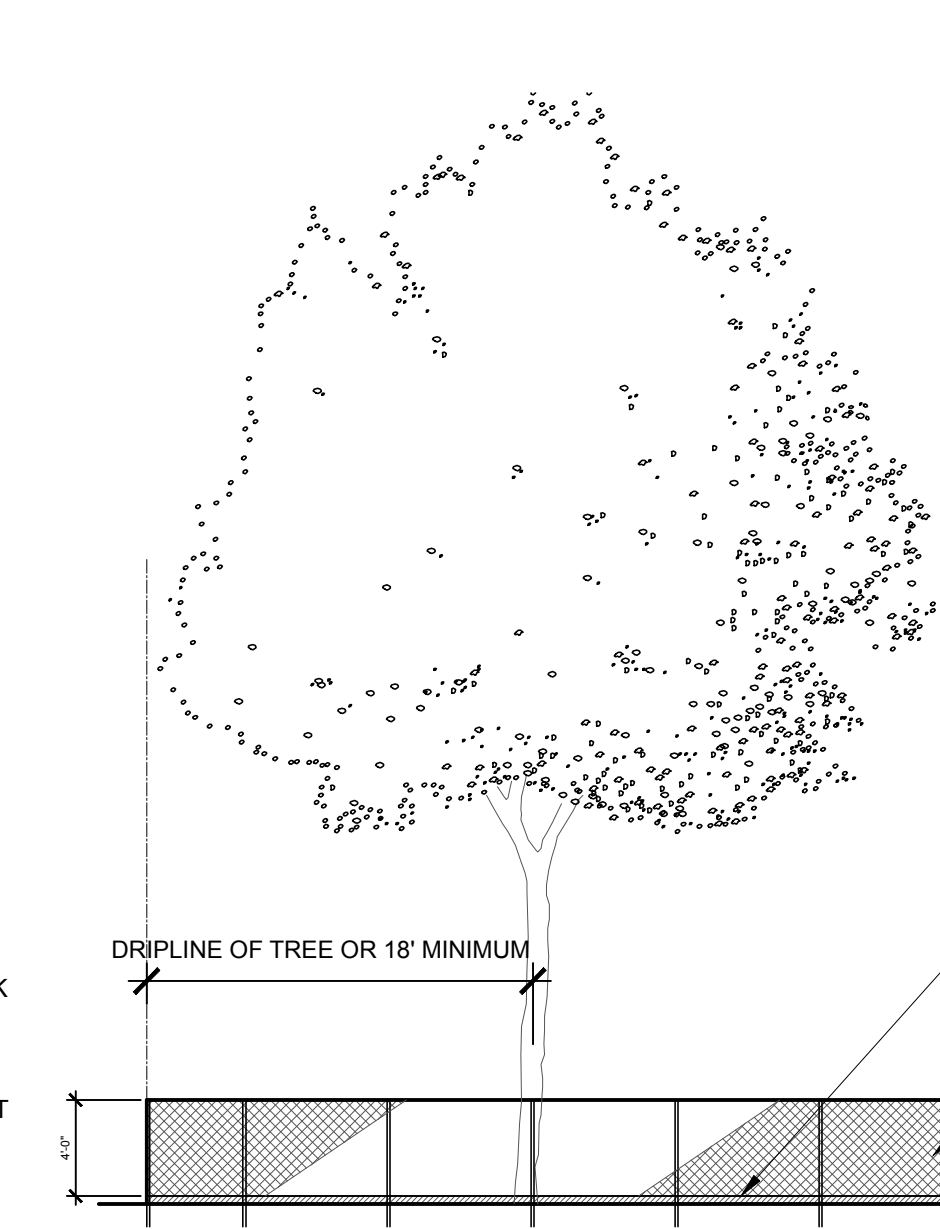
8 DETAIL
SCALE: 3" = 1'-0"



7 STONE DRIP EDGE
SCALE: 3/4" = 1'-0"



2 FENCING TYPE
N.T.S.



1 TREE PROTECTION DETAIL
N.T.S.

- GENERAL NOTES:
- TREE PROTECTION FENCING SHALL BE INSTALLED PRIOR TO START OF WORK.
 - INSTALL FENCING TO THE LIMIT OF DRIPLINE ON TREE OR A MINIMUM OF 18'-0".
 - DO NOT STORE CONSTRUCTION EQUIPMENT, MATERIALS, TOOLS ETC. WITHIN PROTECTIVE FENCING.
 - MAINTAIN THROUGHOUT CONSTRUCTION.
 - IF TREE IS SIGNIFICANTLY DAMAGED BEYOND RECOVERY CM IS RESPONSIBLE TO REMOVE TREE AND REPLACE WITH TREE OF LIKE SPECIES AND OF THE LARGEST CALIPER THE LANDSCAPE ARCHITECT WOULD RECOMMEND.