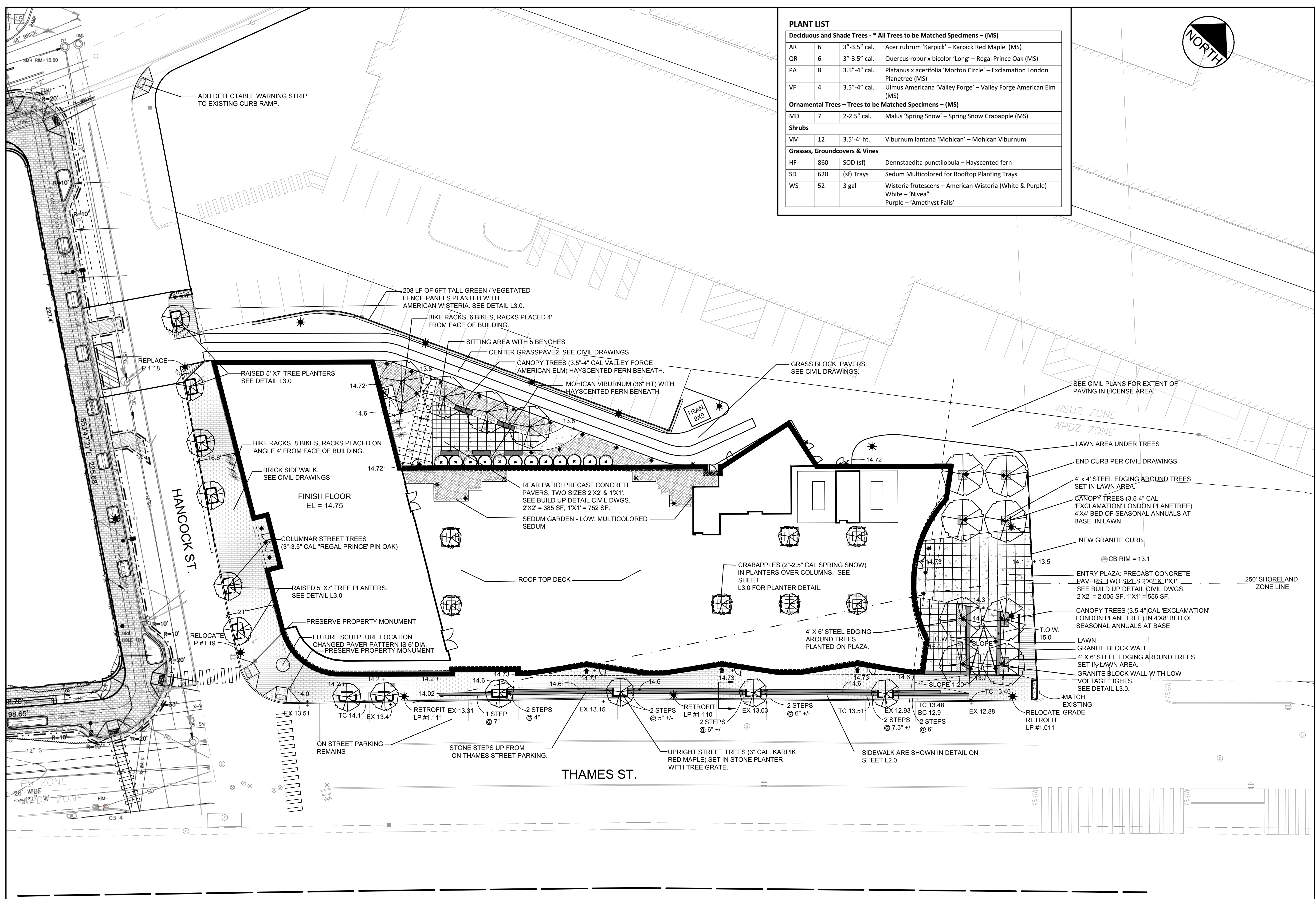
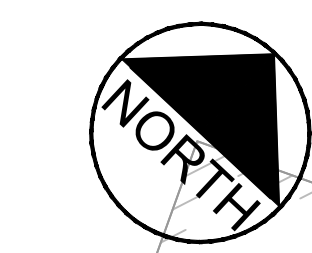
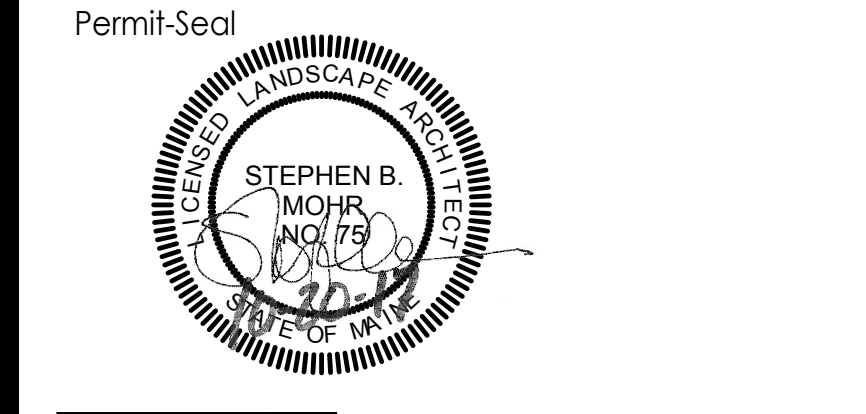


PLANT LIST			
Deciduous and Shade Trees - * All Trees to be Matched Specimens - (MS)			
AR	6	3"-3.5" cal.	Acer rubrum 'Karpick' - Karpick Red Maple (MS)
QR	6	3"-3.5" cal.	Quercus robur x bicolor 'Long' - Regal Prince Oak (MS)
PA	8	3.5"-4" cal.	Platanus x acerifolia 'Morton Circle' - Exclamation London Planetree (MS)
VF	4	3.5"-4" cal.	Ulmus Americana 'Valley Forge' - Valley Forge American Elm (MS)
Ornamental Trees - Trees to be Matched Specimens - (MS)			
MD	7	2-2.5" cal.	Malus 'Spring Snow' - Spring Snow Crabapple (MS)
Shrubs			
VM	12	3.5'-4' ht.	Viburnum lantana 'Mohican' - Mohican Viburnum
Grasses, Groundcovers & Vines			
HF	860	SOD (sf)	Dennstaedtia punctilobula - Hayscented fern
SD	620	(sf) Trays	Sedum Multicolored for Rooftop Planting Trays
WS	52	3 gal	Wisteria frutescens - American Wisteria (White & Purple) White - 'Nivea' Purple - 'Amethyst Falls'



Revision	By	Date
3	MMS	17.10.20
2	SBM	17.10.18
1	SBM	17.10.6
1	MMS	17.10.6
1	YJAM/DD	17.10.6

File Name	MMS	SBM	TS	17.10.10
978-Base-MS 10-5-17	DWN.	CHKD.	DSGN.	DATE



Client/Project
0 HANCOCK LLC

THAMES STREET SITE
PORTLAND, MAINE

Title
LANDSCAPE PLAN

Project No. 195350450
Scale 1" = 20'
Sheet

PLAN REFERENCE:
1. PROPERTY BOUNDARY, TOPOGRAPHIC, UTILITY, BUILDING, ROAD, AND VEGETATION INFORMATION TAKEN FROM DIGITAL FILES PROVIDED BY STANTEC CONSULTING SERVICES, DATED SEPTEMBER 1, 2017, REVISED OCTOBER 20, 2017.

