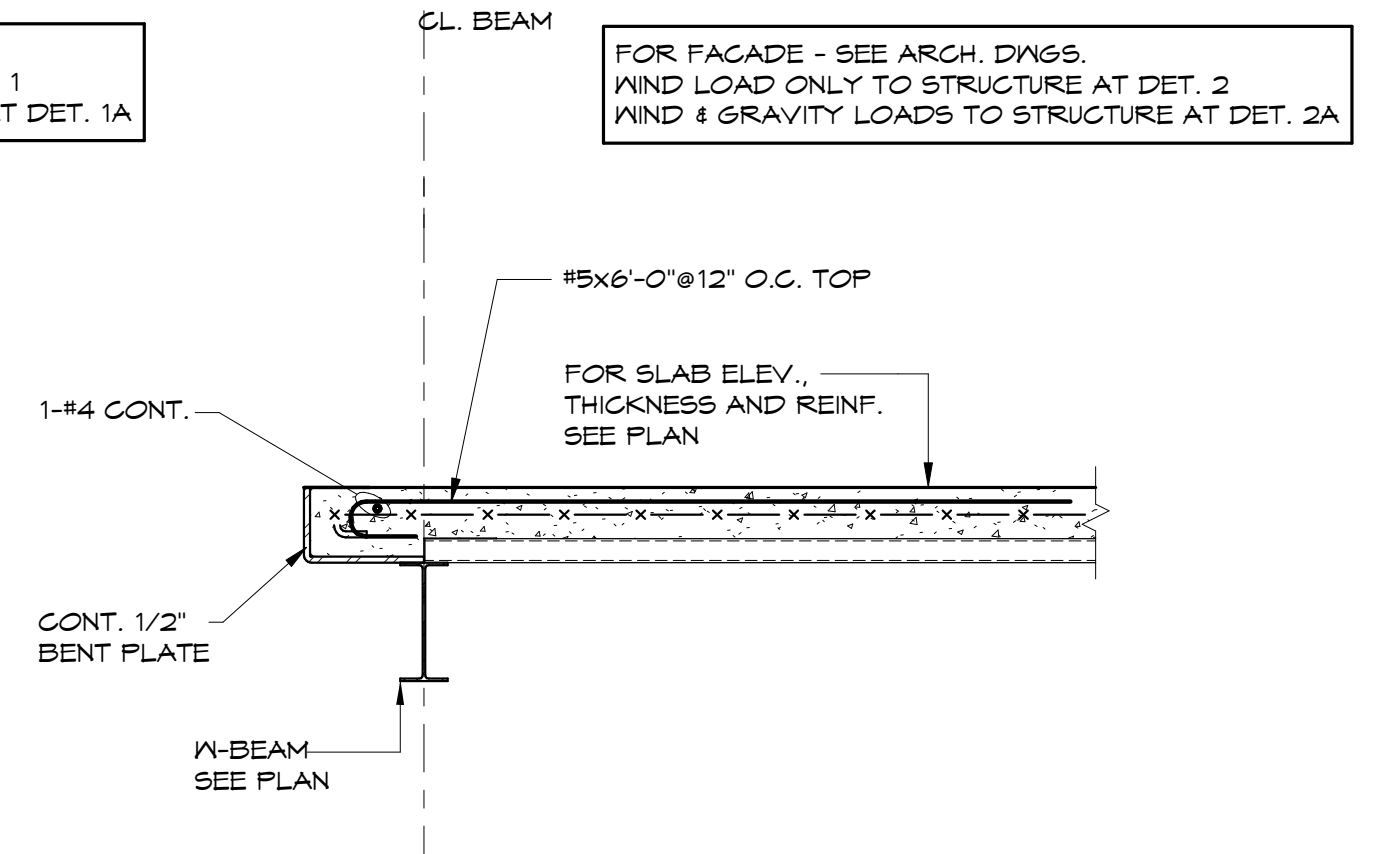
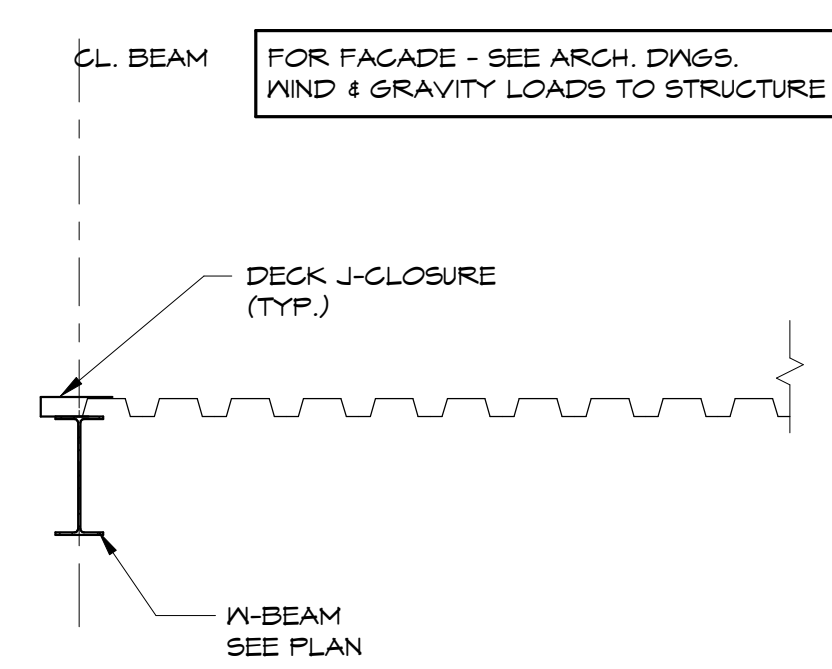


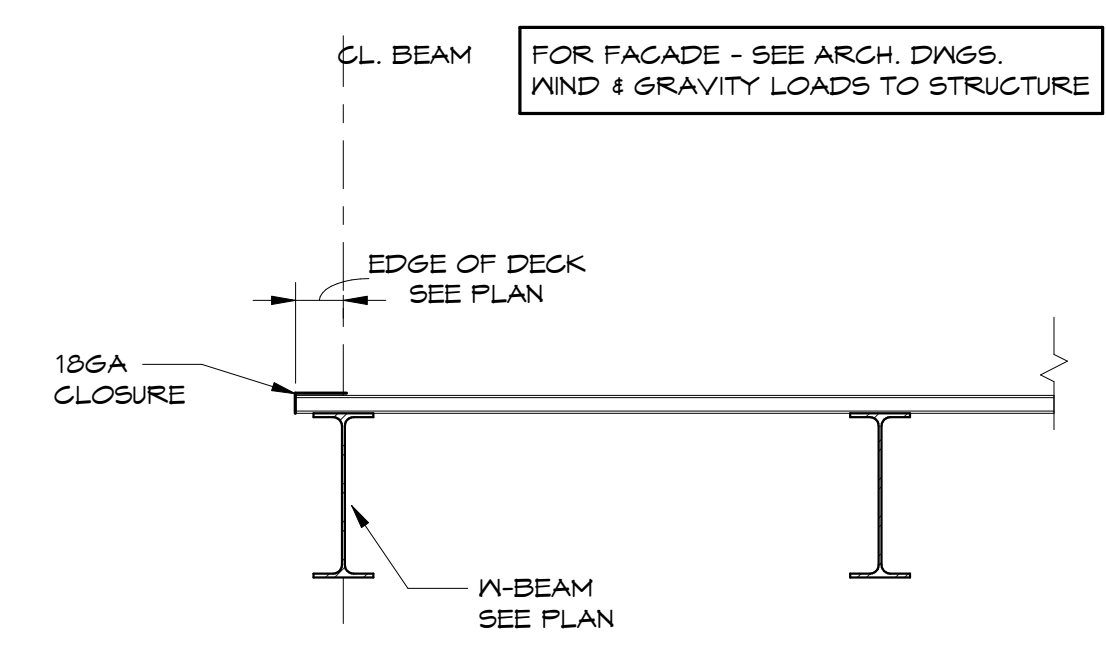
1A SECTION
3/4" = 1'-0"



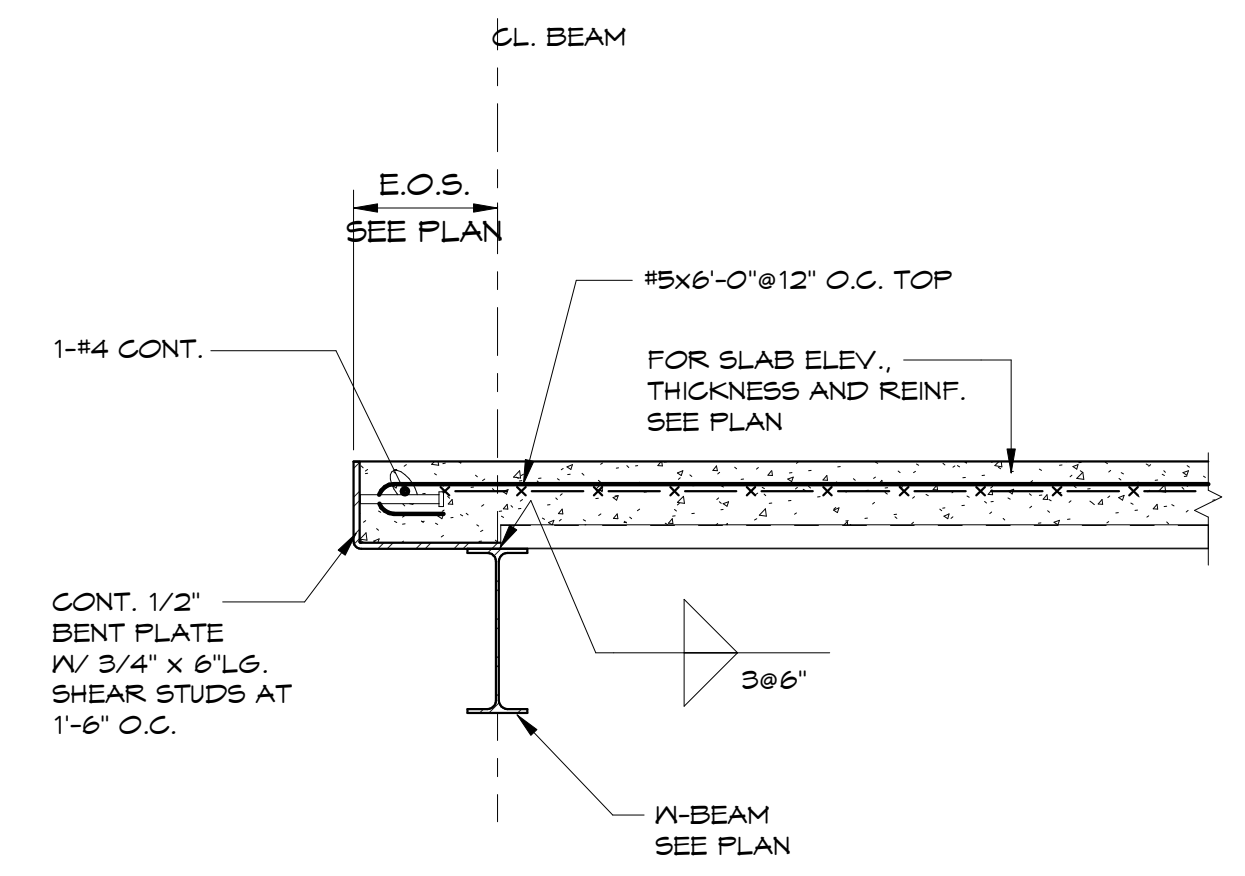
2A SECTION
3/4" = 1'-0"



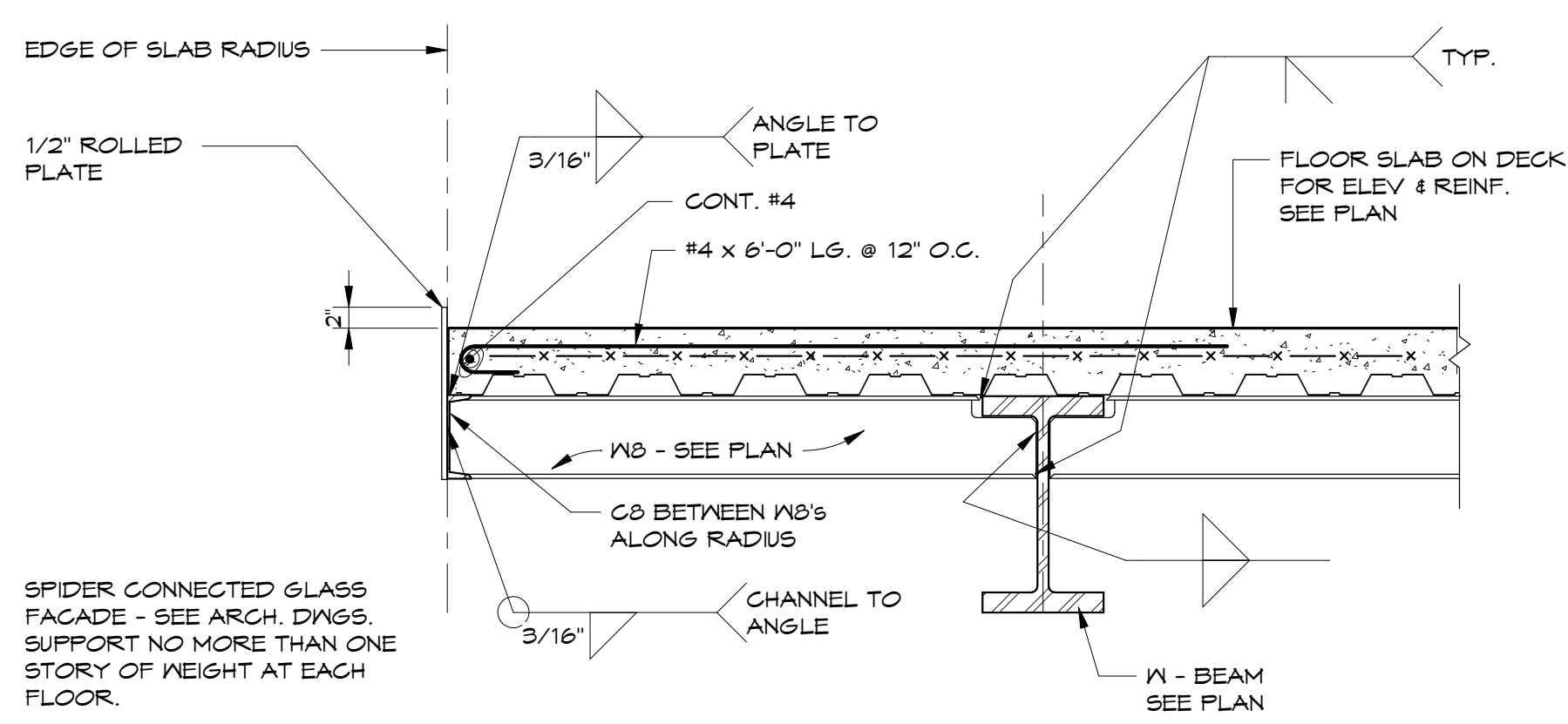
FOR ADDITIONAL INFORMATION, SEE DETAIL A ON S205



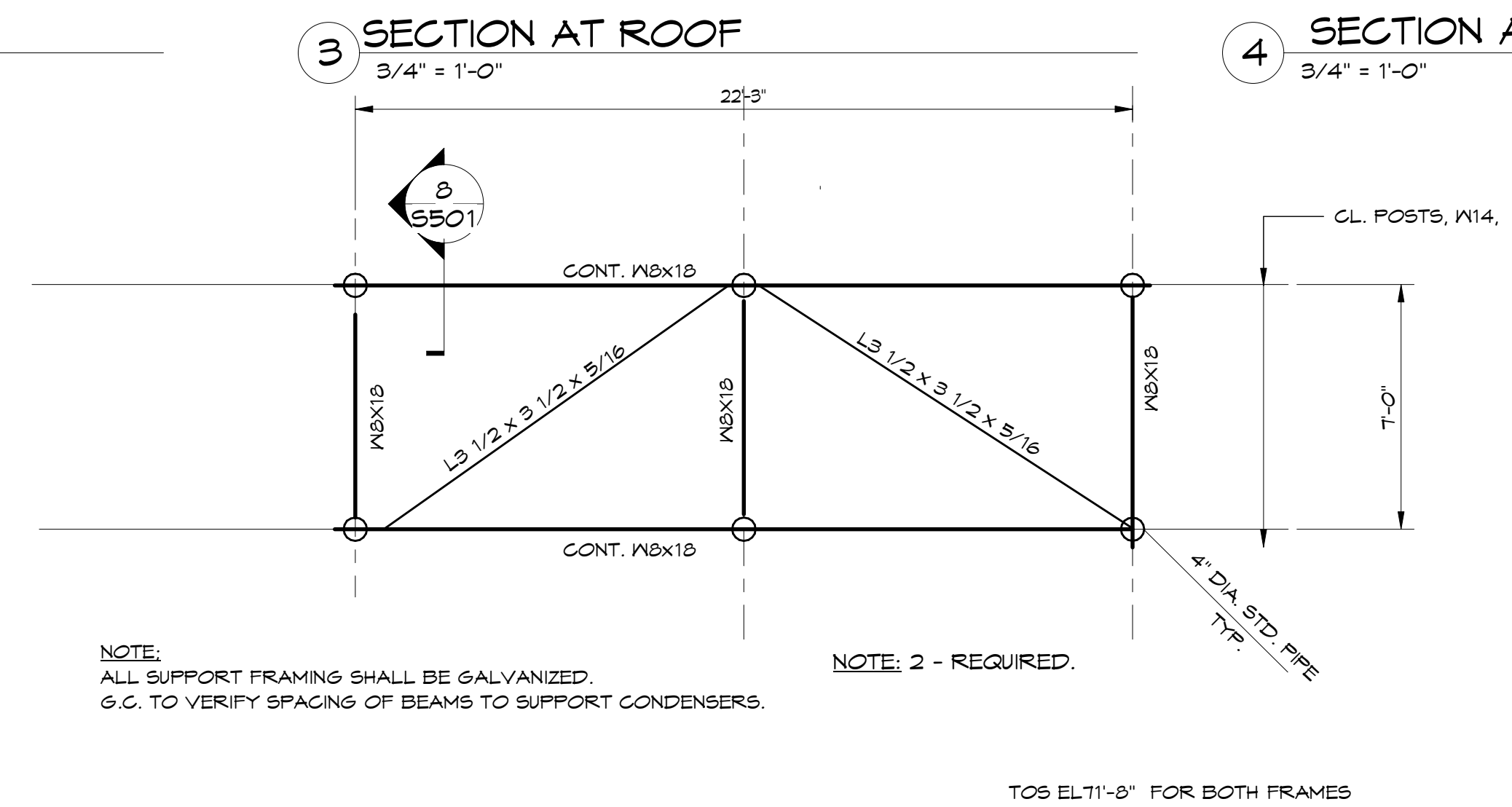
FOR ADDITIONAL INFORMATION, SEE DETAIL A ON S205



5 SECTION
3/4" = 1'-0"



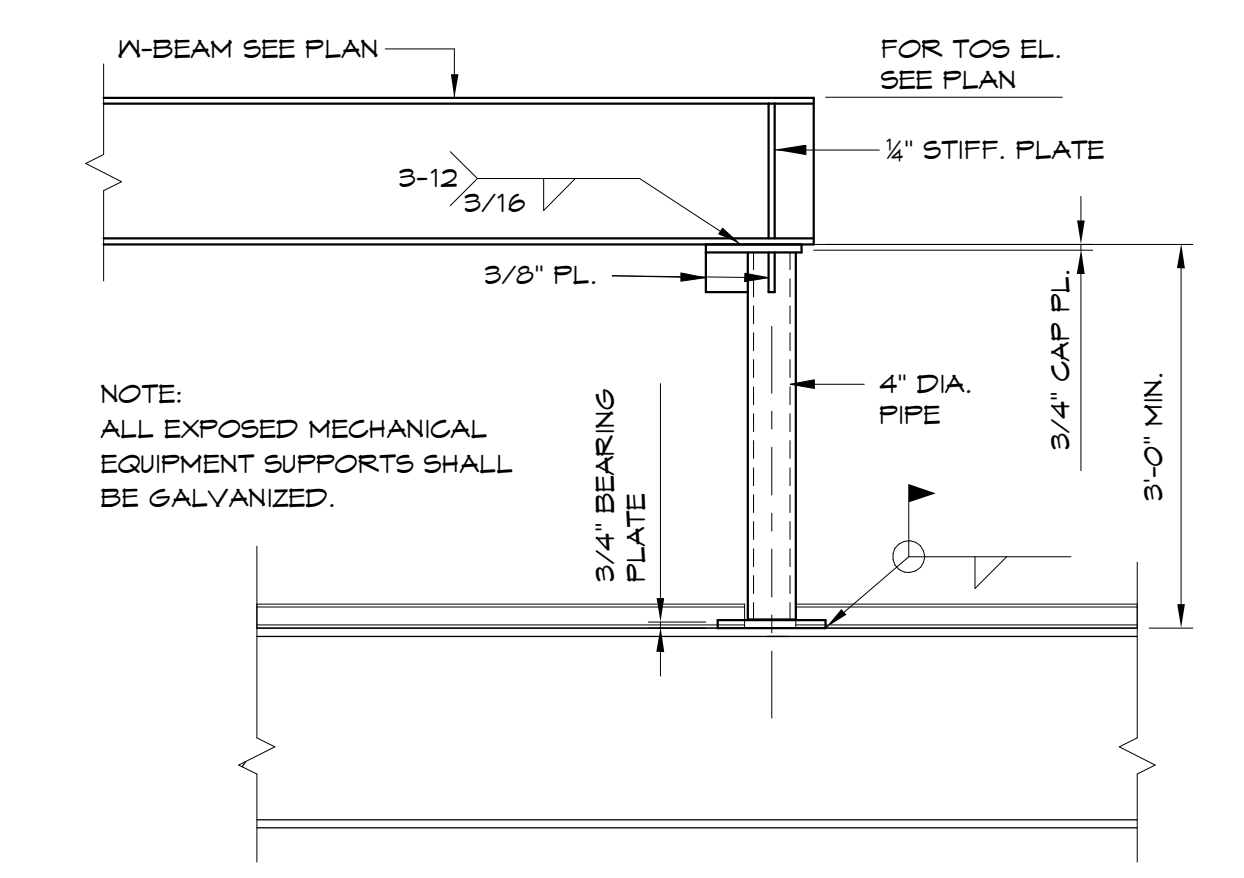
6 SECTION AT RADIUS FLOOR
3/4" = 1'-0"



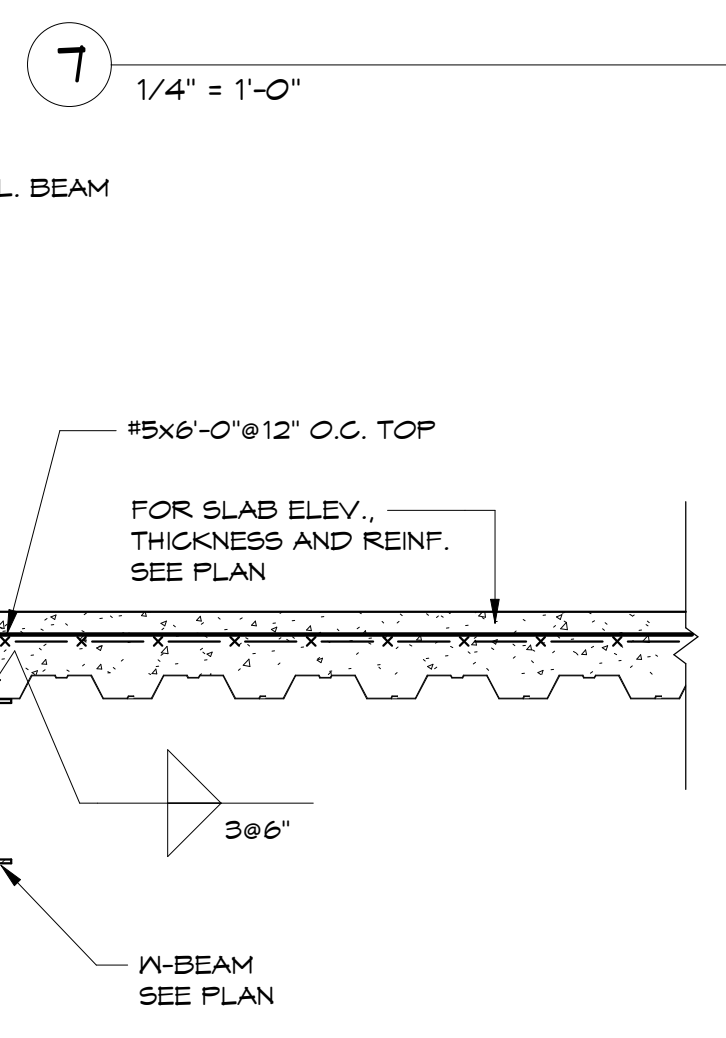
3 SECTION AT ROOF
3/4" = 1'-0"

PLAN OF ROOF DUNNAGE SUPPORT FRAME

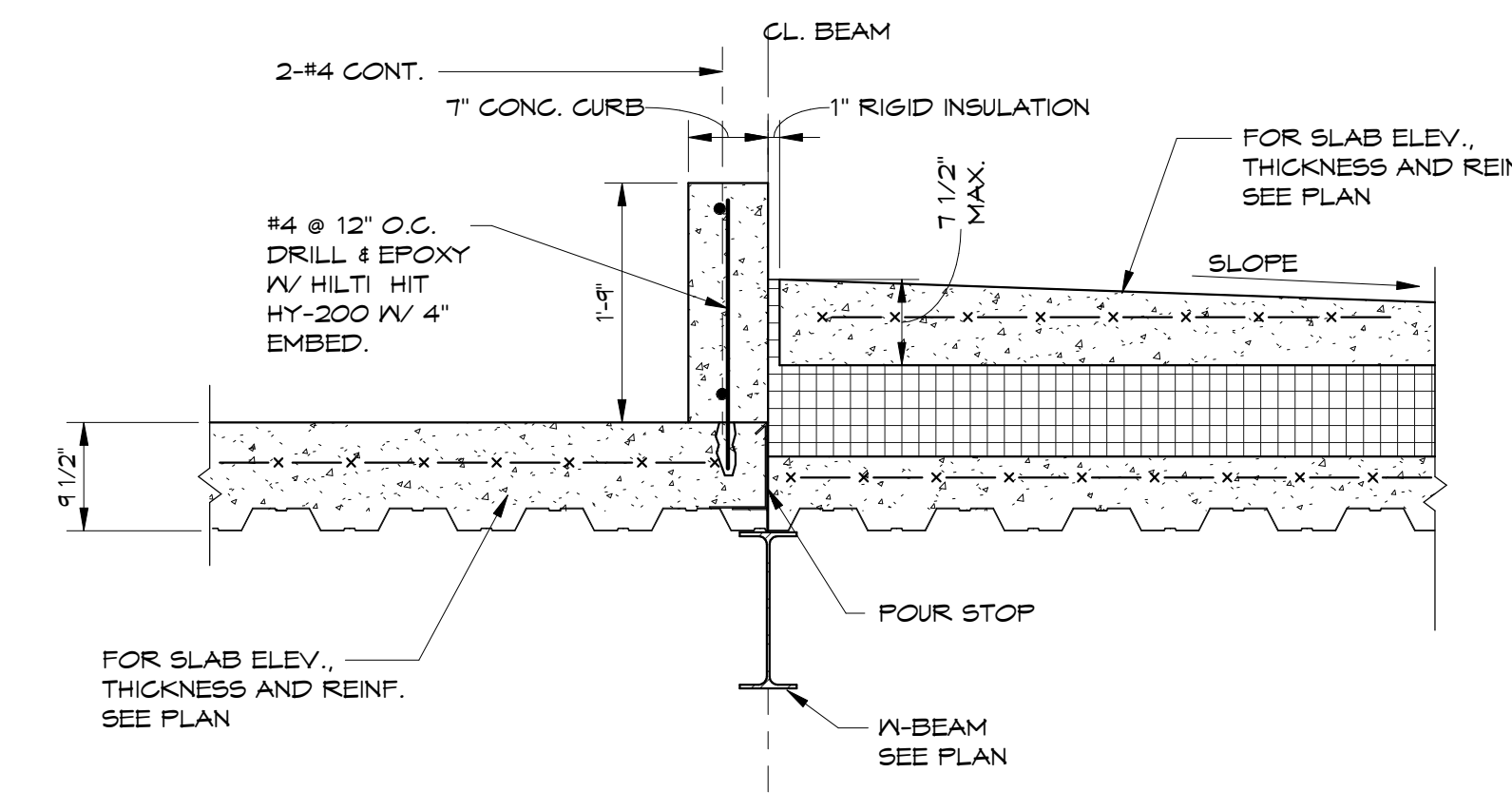
4 SECTION AT ROOF
3/4" = 1'-0"



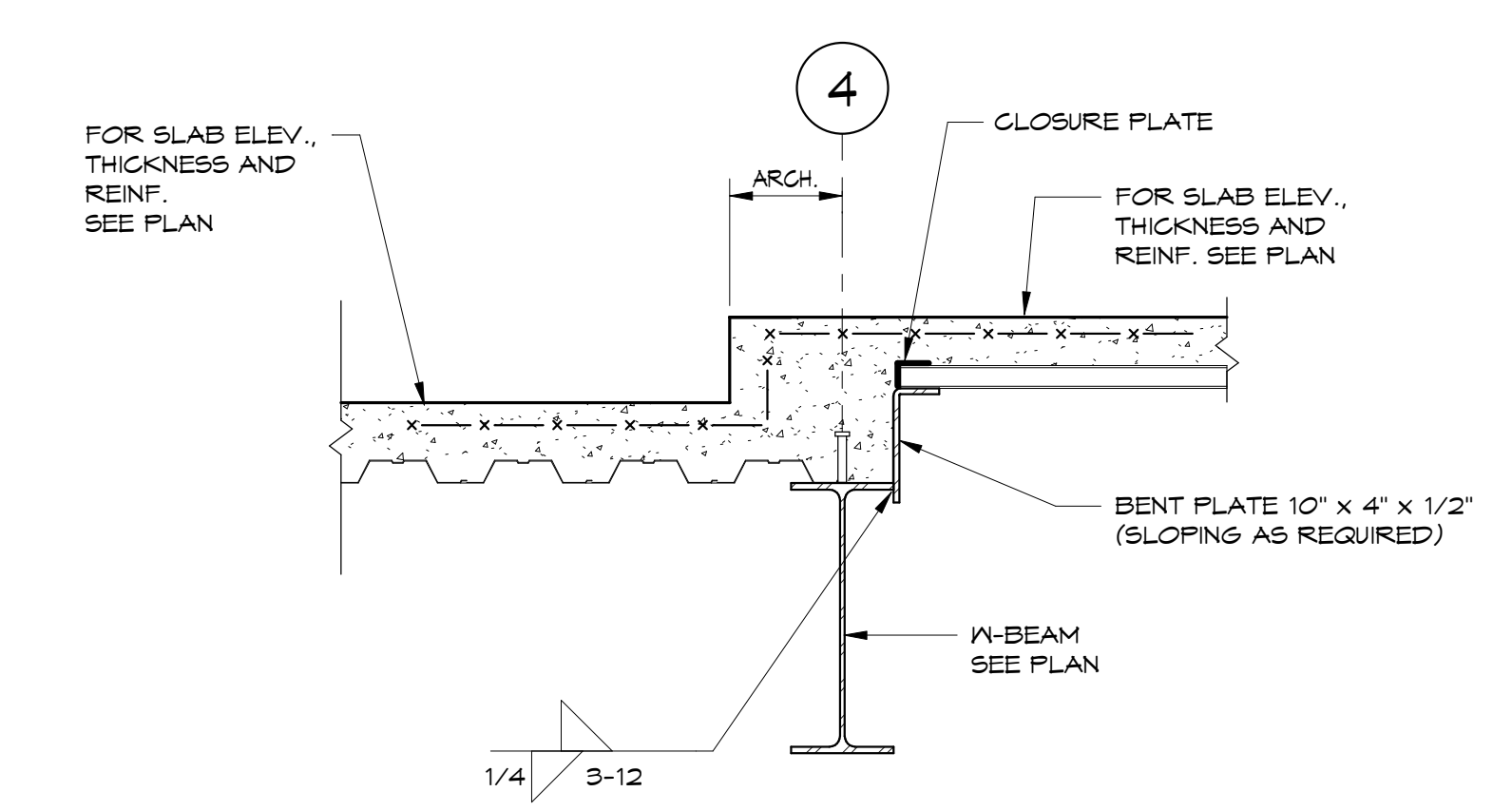
8 MECHANICAL EQUIPMENT SUPPORT POST
1" = 1'-0"



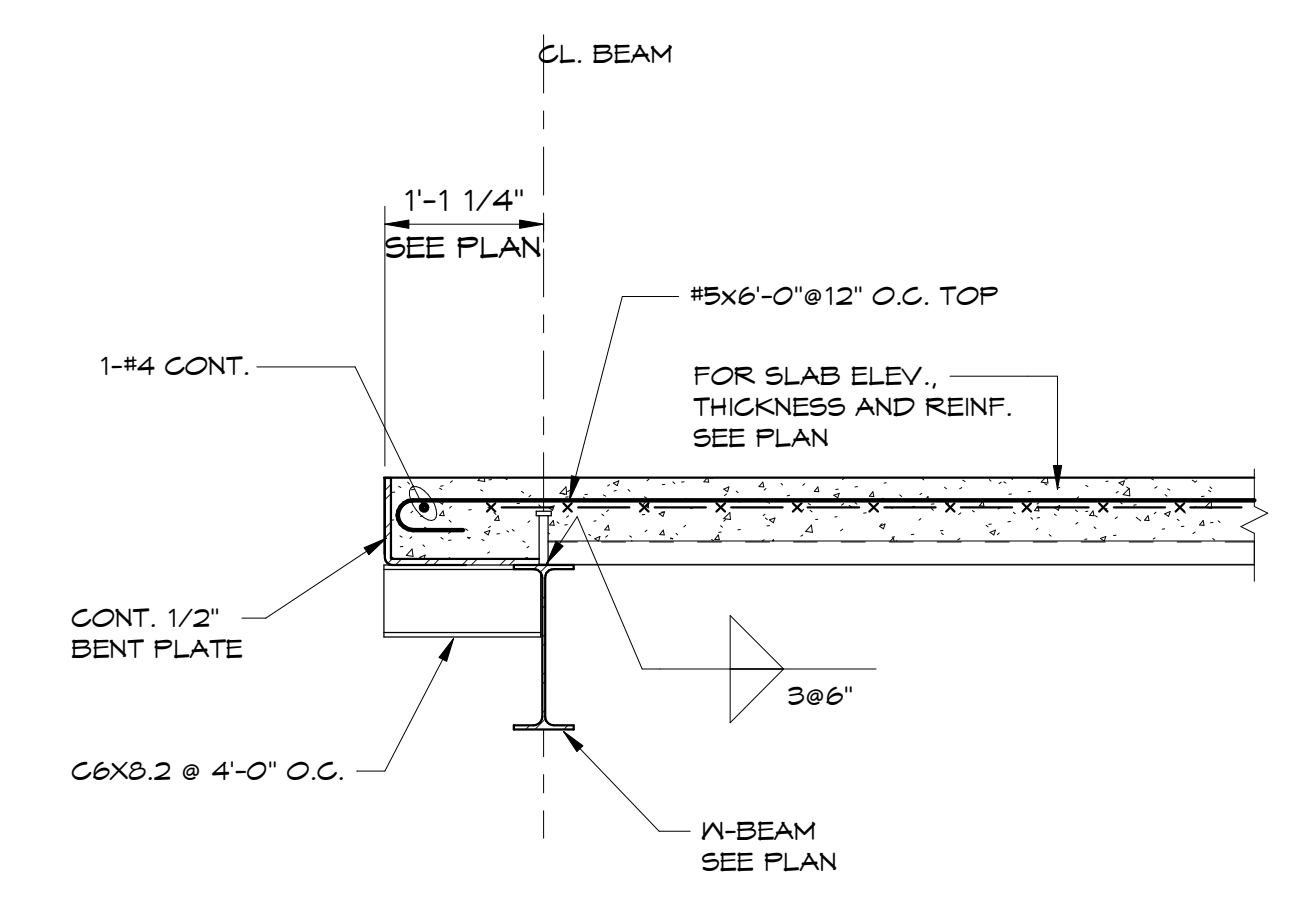
7 SECTION
1/4" = 1'-0"



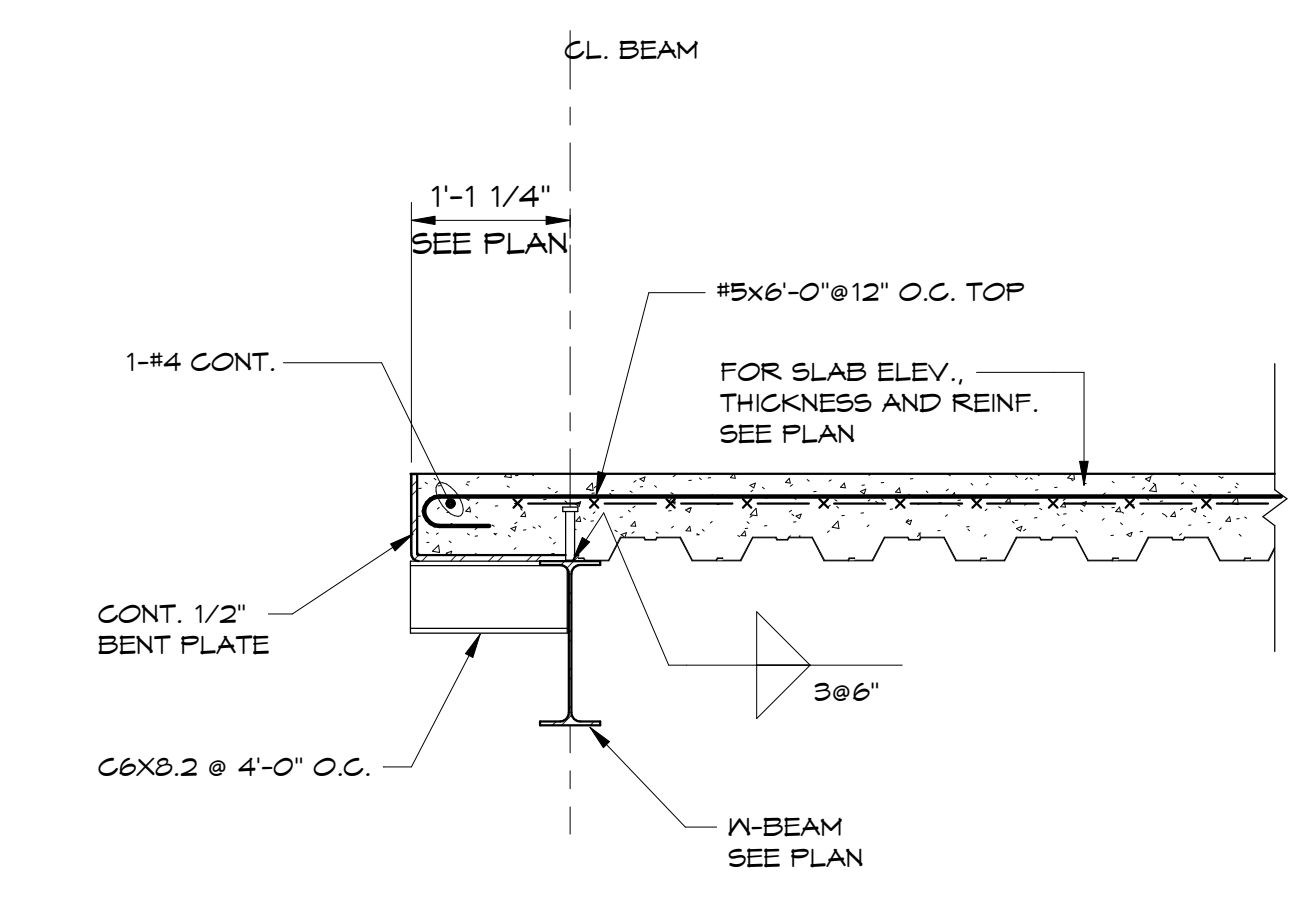
11 SECTION AT PENTHOUSE CURB
3/4" = 1'-0"



12 SECTION AT FOURTH FLOOR
3/4" = 1'-0"



9 SECTION AT EDGE OF SLAB
3/4" = 1'-0"



10 SECTION AT EDGE OF SLAB
3/4" = 1'-0"

STATE OF MAINE
RIMANTAS M VEITAS
No. 9477
LICENSED PROFESSIONAL ENGINEER

Prepared For: **0 Hancock Street LLC**

Consulting Engineer: **VEITAS & VEITAS engineers**
689 Granite Street, Suite 101
Brunswick, Massachusetts 02906
TEL: (781) 266-2868 FAX: (781) 266-2905

Architect: **ARCHETYPE architects**
48 Union Wharf Portland, Maine 04101
(207) 772-6022 Fax: (207) 772-4056

Project: **0 HANCOCK STREET**
0 HANCOCK STREET
PORTLAND, MAINE

Revisions:
08-11-17 Issued for Foundation Permit
08-31-17 Permit Set
09-15-17 Steel Bid Set
09-22-17 Pile Bid Set
09-29-17 Concrete Bid Set
10-06-17 Issued for Permit

Date: **08/11/17**
Scale: **Steel Sections & Details**

S501