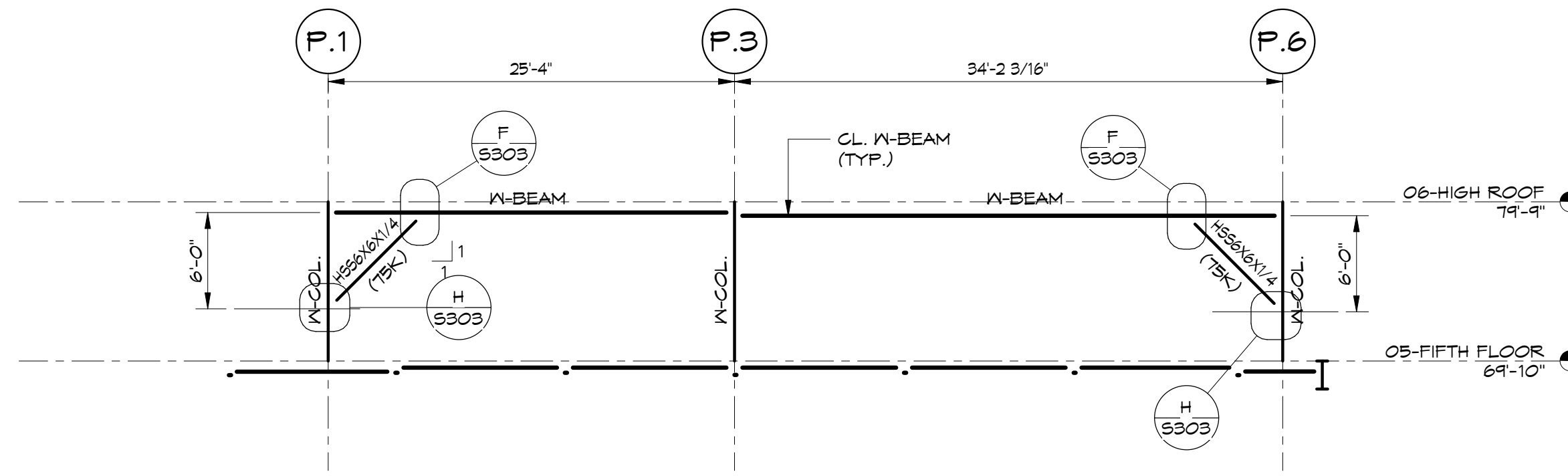
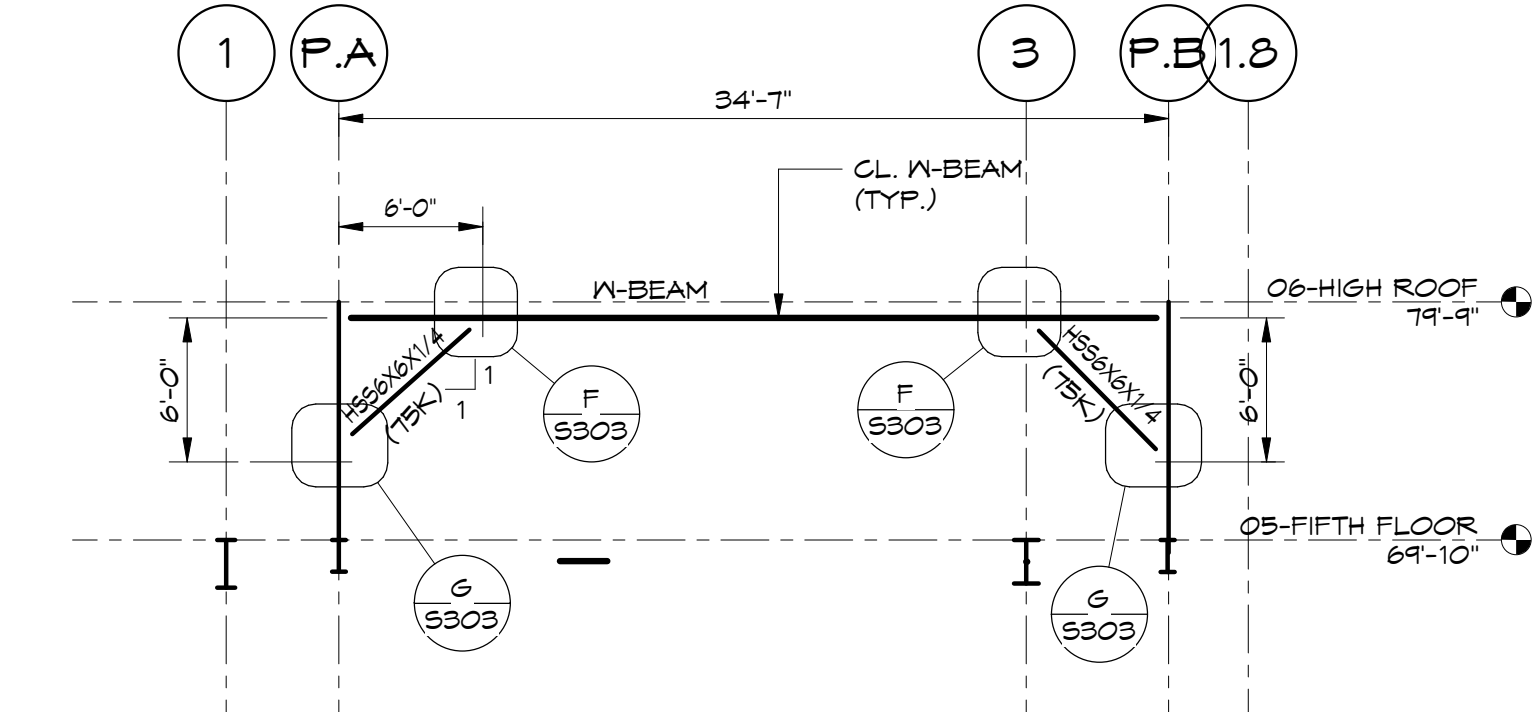


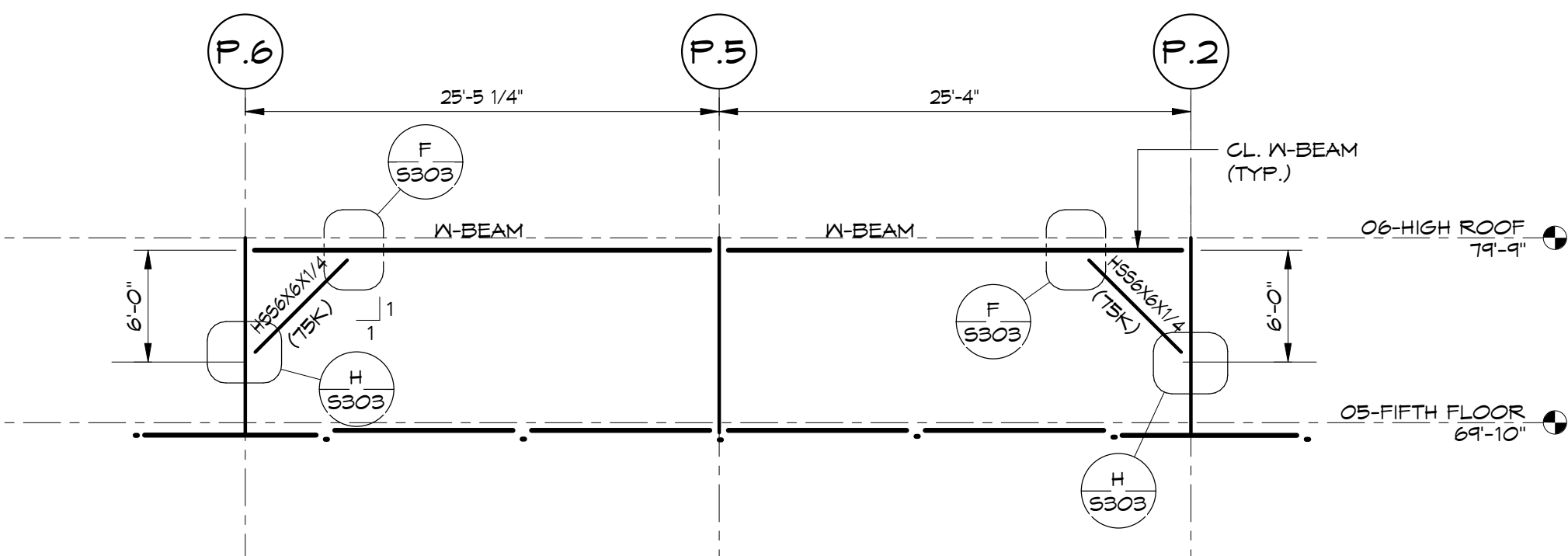
1 BRACE "G"
1/8" = 1'-0"



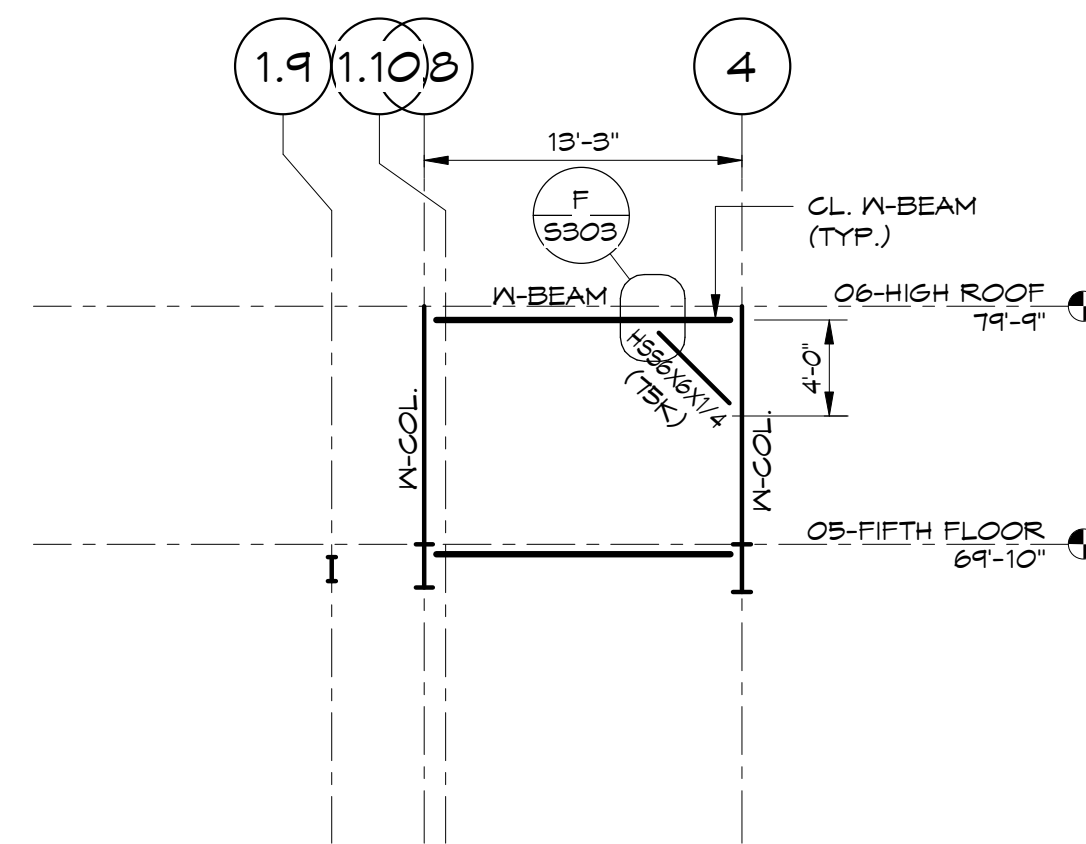
2 BRACE "H"
1/8" = 1'-0"



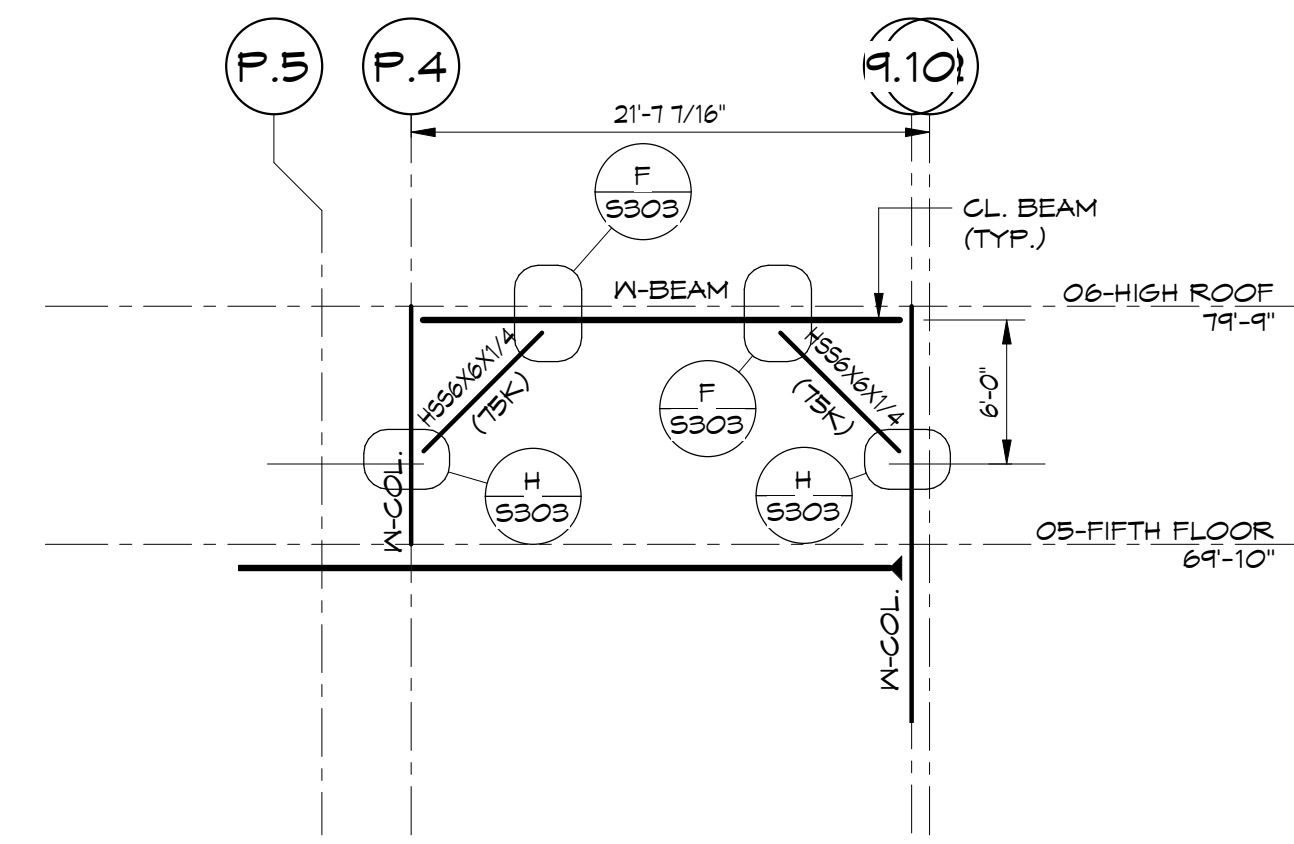
3 BRACE "J"
1/8" = 1'-0"



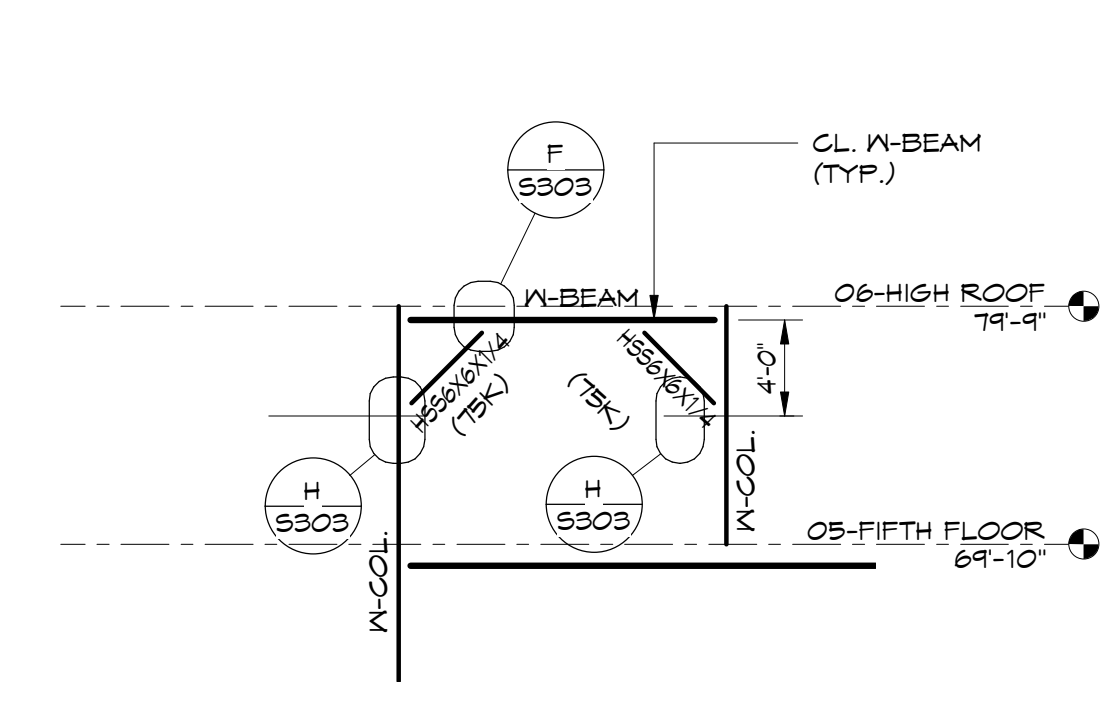
4 BRACE "K"
1/8" = 1'-0"



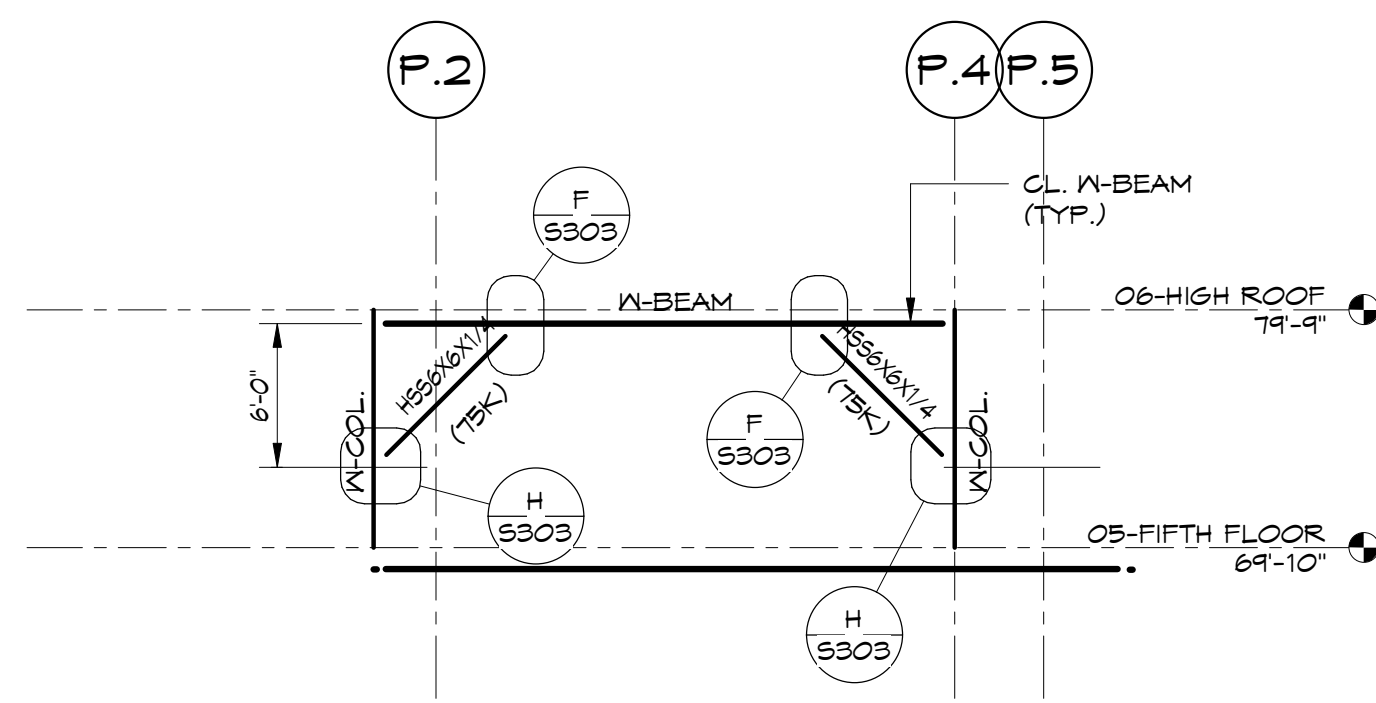
5 BRACE "L"
1/8" = 1'-0"



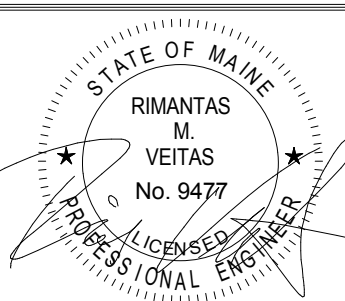
6 BRACE "M"
1/8" = 1'-0"



8 BRACE "P"
1/8" = 1'-0"



7 BRACE "N"
1/8" = 1'-0"



Prepared For:
0 Hancock Street
LLC

Consulting Engineer:
VEITAS SVEITAS
engineers
689 Granite Street, Suite 101
Brunswick, Massachusetts 02906
TEL: (781) 266-2808 FAX: (781) 266-2005

Architect:
ARCHETYPE
architects
48 Union Wharf Portland, Maine 04101
(207) 772-6022 Fax: (207) 772-4056

Project:
0 HANCOCK STREET
0 HANCOCK STREET
PORTLAND, MAINE

Revisions:

| | |
|----------|------------------------------|
| 08-11-17 | Issued for Foundation Permit |
| 08-31-17 | Permit Set |
| 09-15-17 | Steel Bid Set |
| 09-22-17 | Pile Bid Set |
| 09-29-17 | Concrete Bid Set |
| 10-06-17 | Issued for Permit |

Date: 08/11/17
Scale:
Brace Frames & Details

S304