

Prepared For:
0 Hancock Street
LLC

Consulting Engineer:
VEITAS ENGINEERS
engineers
680 Granite Street, Suite 101
Brunswick, Massachusetts 02468
TEL: (781) 266-2868 FAX: (781) 266-2905

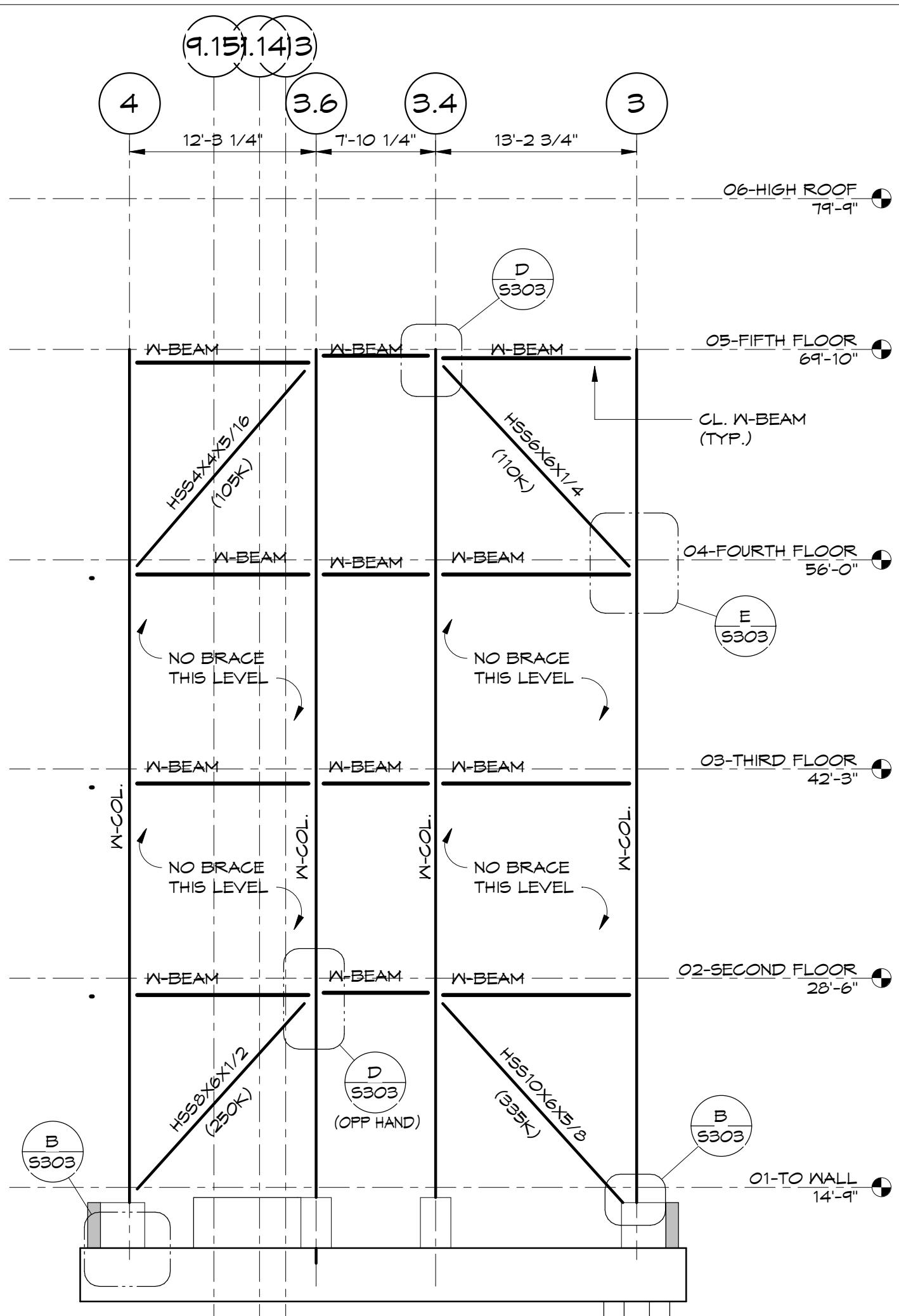
Architect:
ARCHETYPE architects
48 Union Wharf Portland, Maine 04101
(207) 772-6022 Fax: (207) 772-4056

Project:
0 HANCOCK STREET
0 HANCOCK STREET
PORTLAND, MAINE

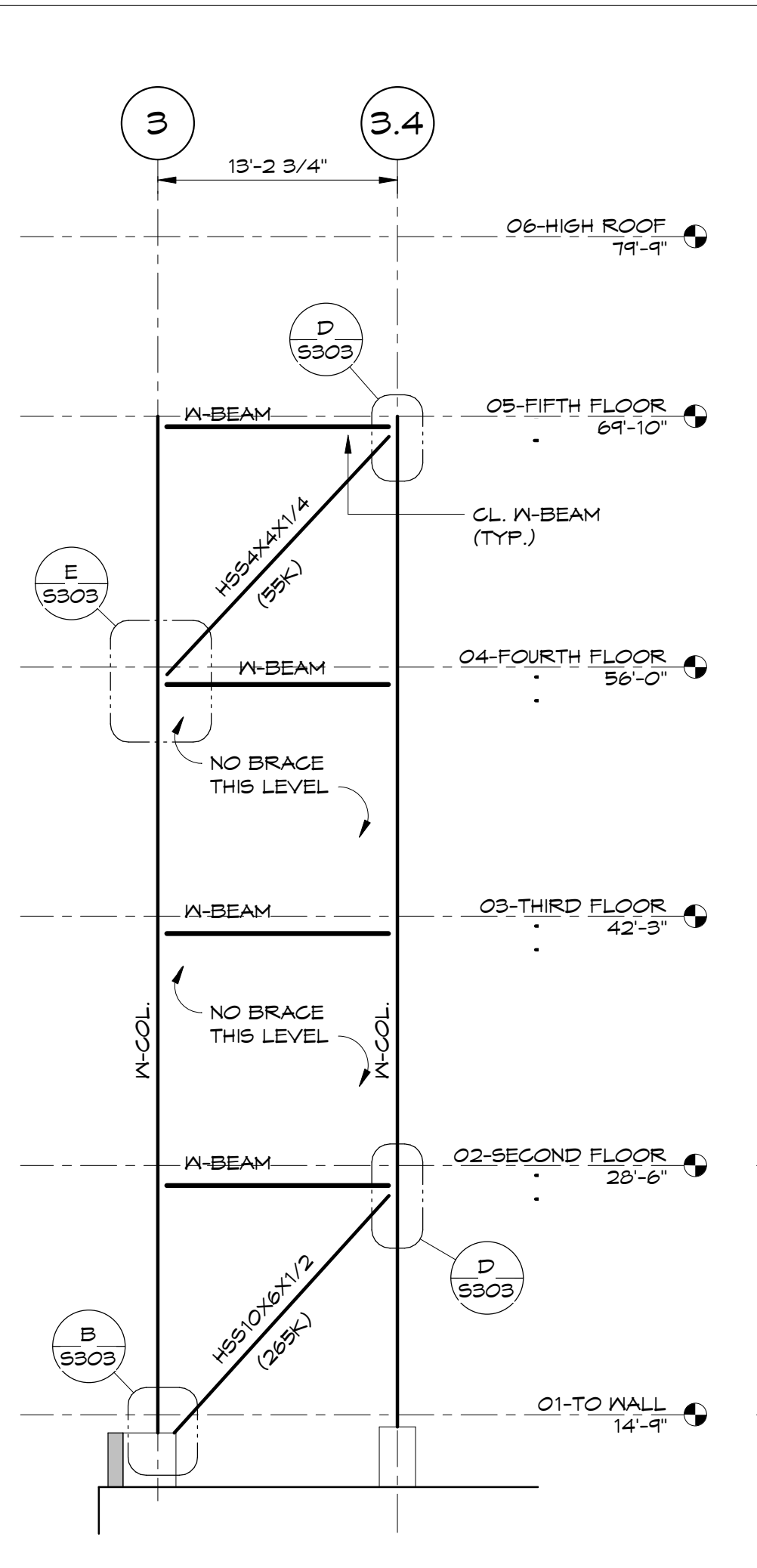
Revisions:
08-11-17 Issued for Foundation Permit
08-31-17 Permit Set
09-15-17 Steel Bid Set
09-22-17 Pile Bid Set
09-29-17 Concrete Bid Set
10-06-17 Issued for Permit

Date: 08/11/17
Scale:
Brace Frames & Details

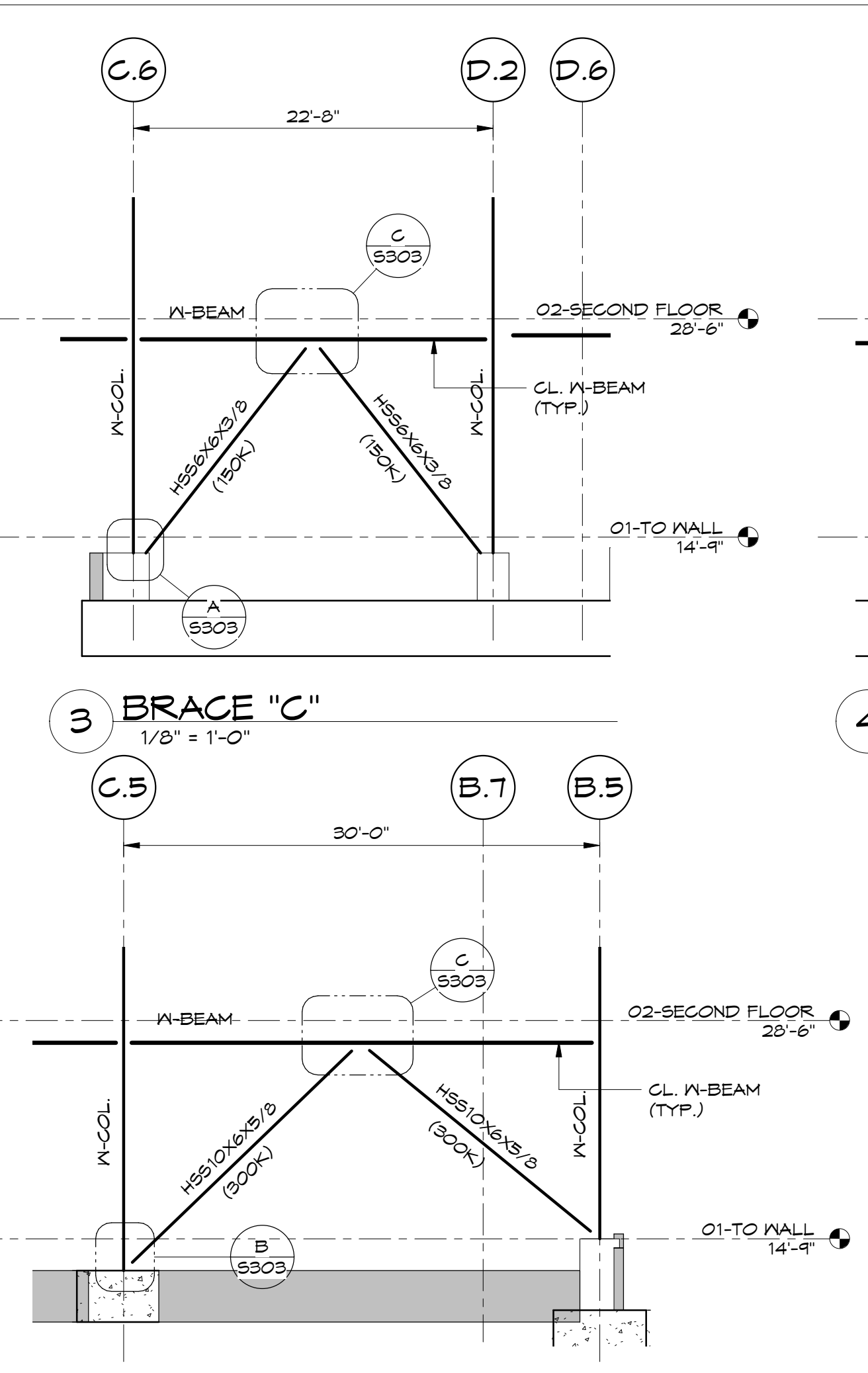
S303



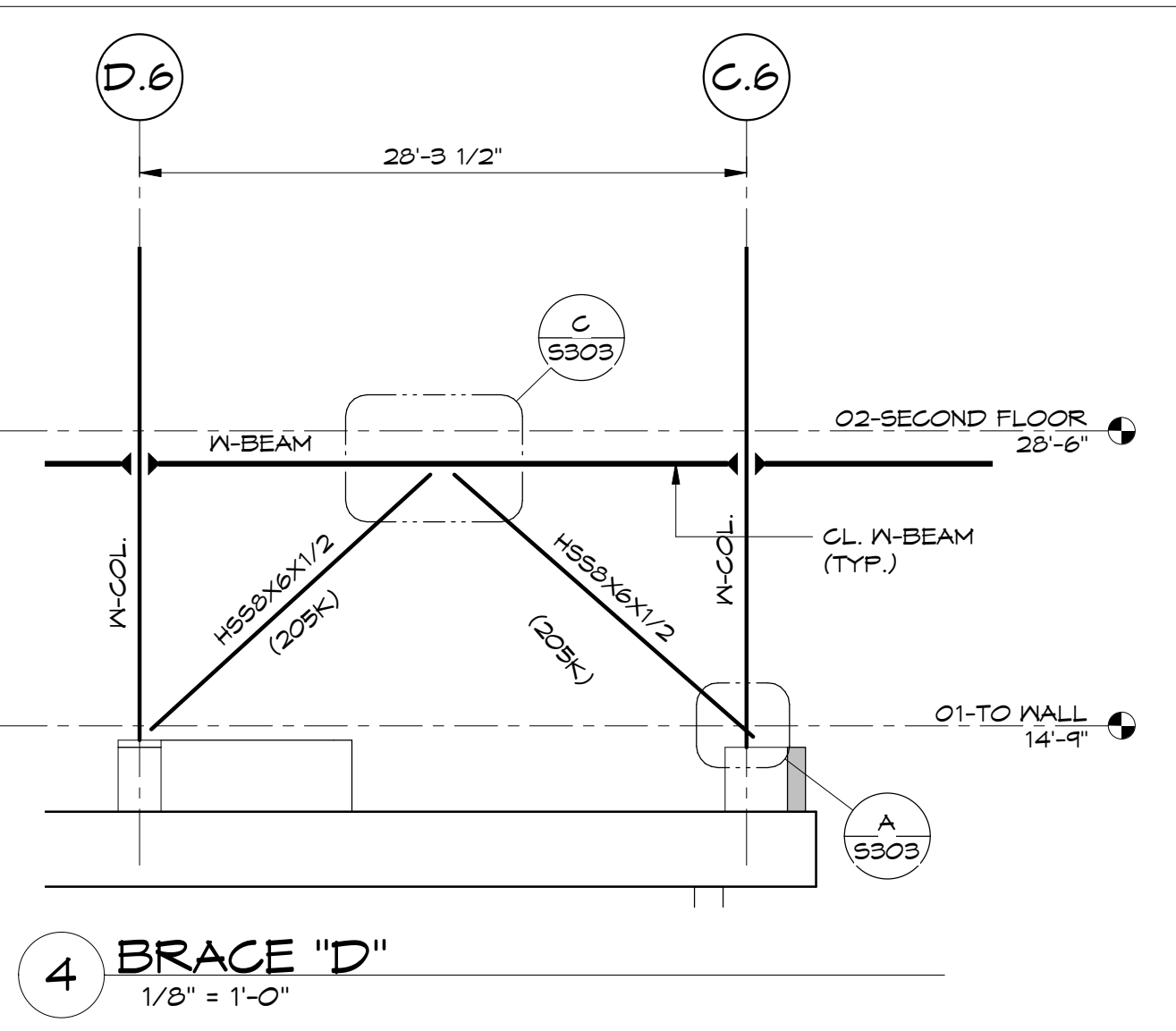
1 BRACE "A"
1/8" = 1'-0"



2 BRACE "B"
1/8" = 1'-0"



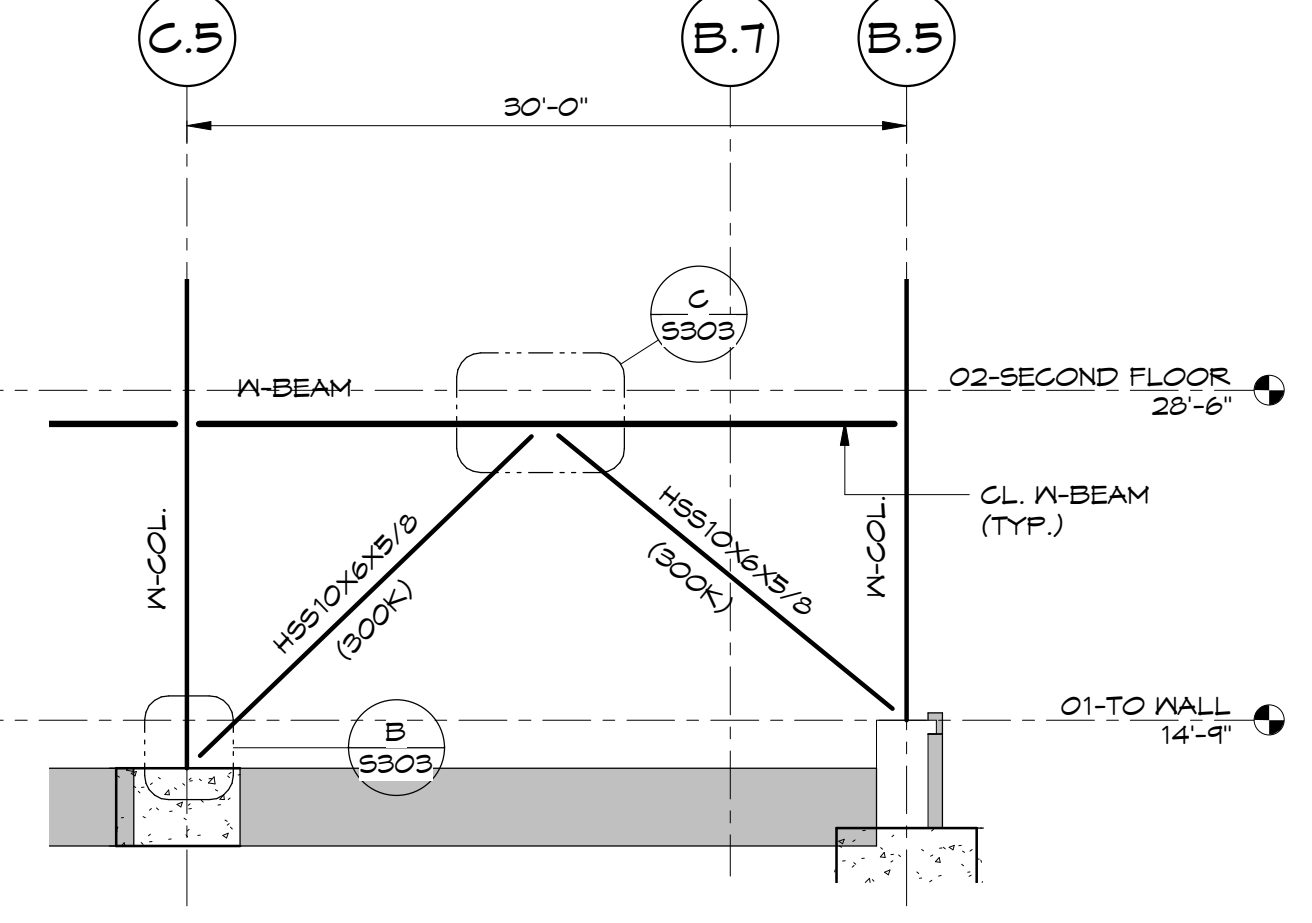
3 BRACE "C"
1/8" = 1'-0"



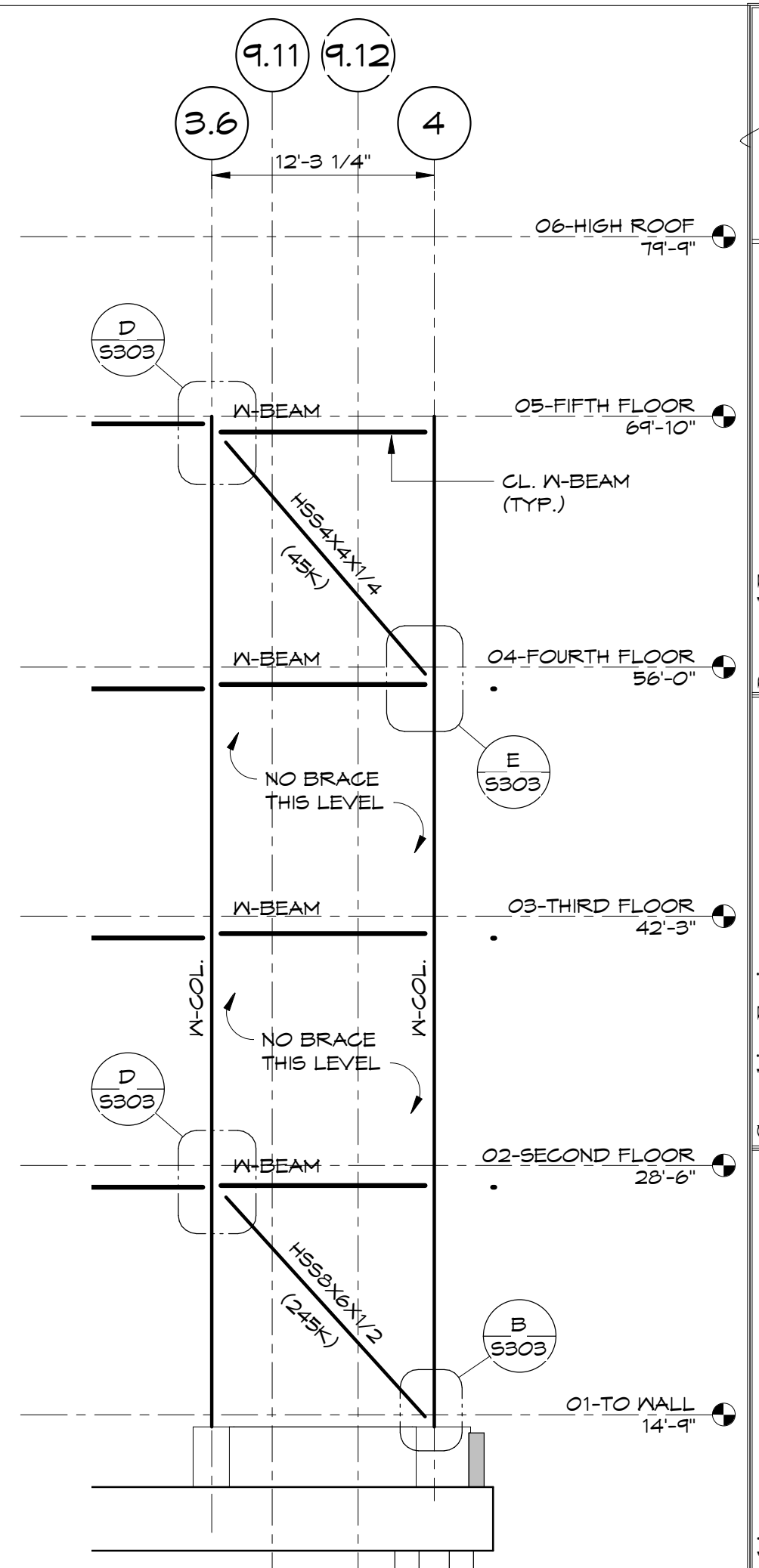
4 BRACE "D"
1/8" = 1'-0"

NOTE
(105K) ETC. INDICATES FACTORED (LRFD) AXIAL FORCE IN THE BRACE MEMBERS FOR THE USE IN CONNECTION DESIGN. TO CHANGE LRFD LOAD TO ASD DIVIDE LRFD BY 1.5 (LRFD/1.5=ASD)

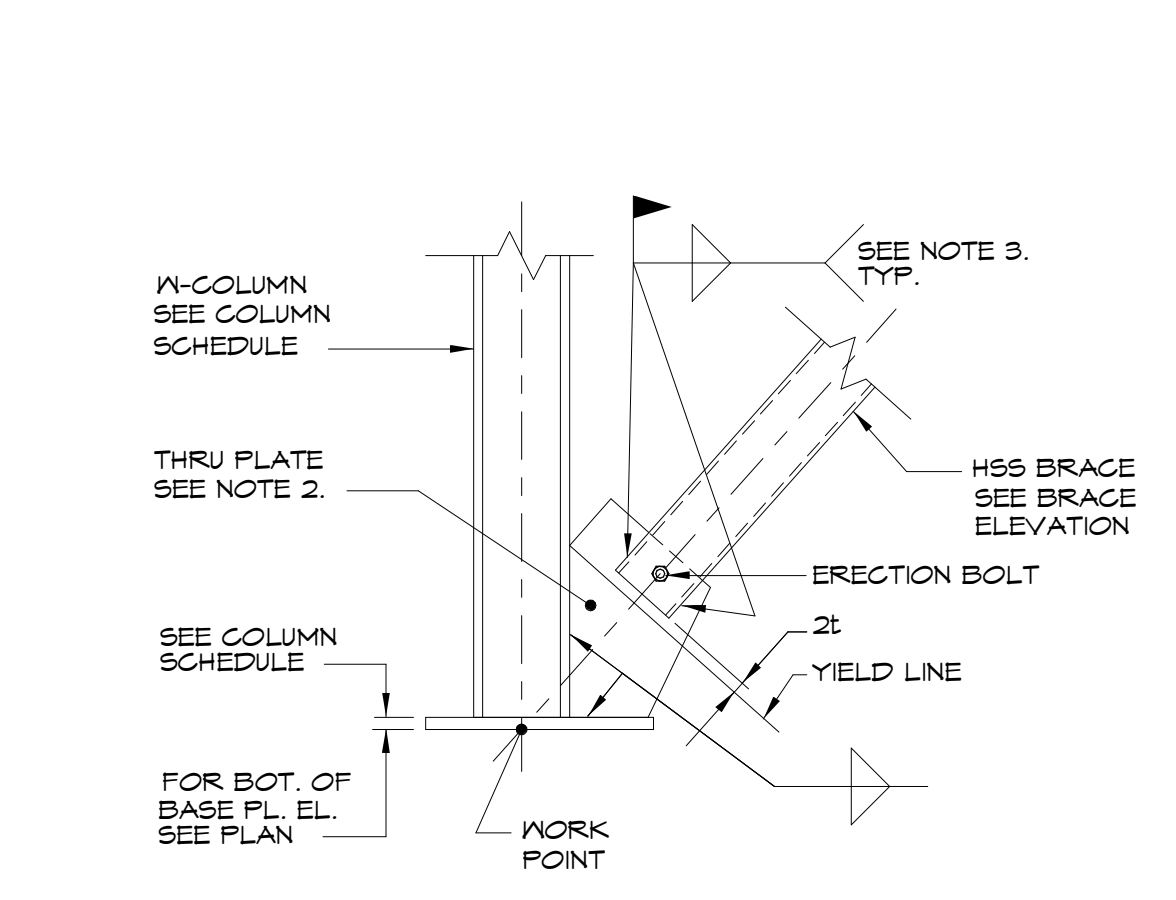
BRACE DETAIL NOTES:
1. FOR NUMBER, SIZE AND LENGTHS OF ANCHOR BOLTS SEE BASE PLATE DETAILS
2. ALL BRACE GUSSET PLATES TO BE 1/2" THICK MIN.
3. DETAILER TO PROVIDE SIZE AND LENGTH OF FIELD FILLET WELDS OF HSS BRACE TO PLATES ON THE ERECTION DRAWINGS.
4. SHEAR CAPACITY OF CONNECTION TO BE BRACING LOAD PLUS BEAM SHEAR INDICATED ON PLANS.
5. DETAILER TO REVIEW INSTALLATION OF BRACE MEMBER. SUBMIT DIAGRAM INDICATING HOW BRACE WILL FIT.



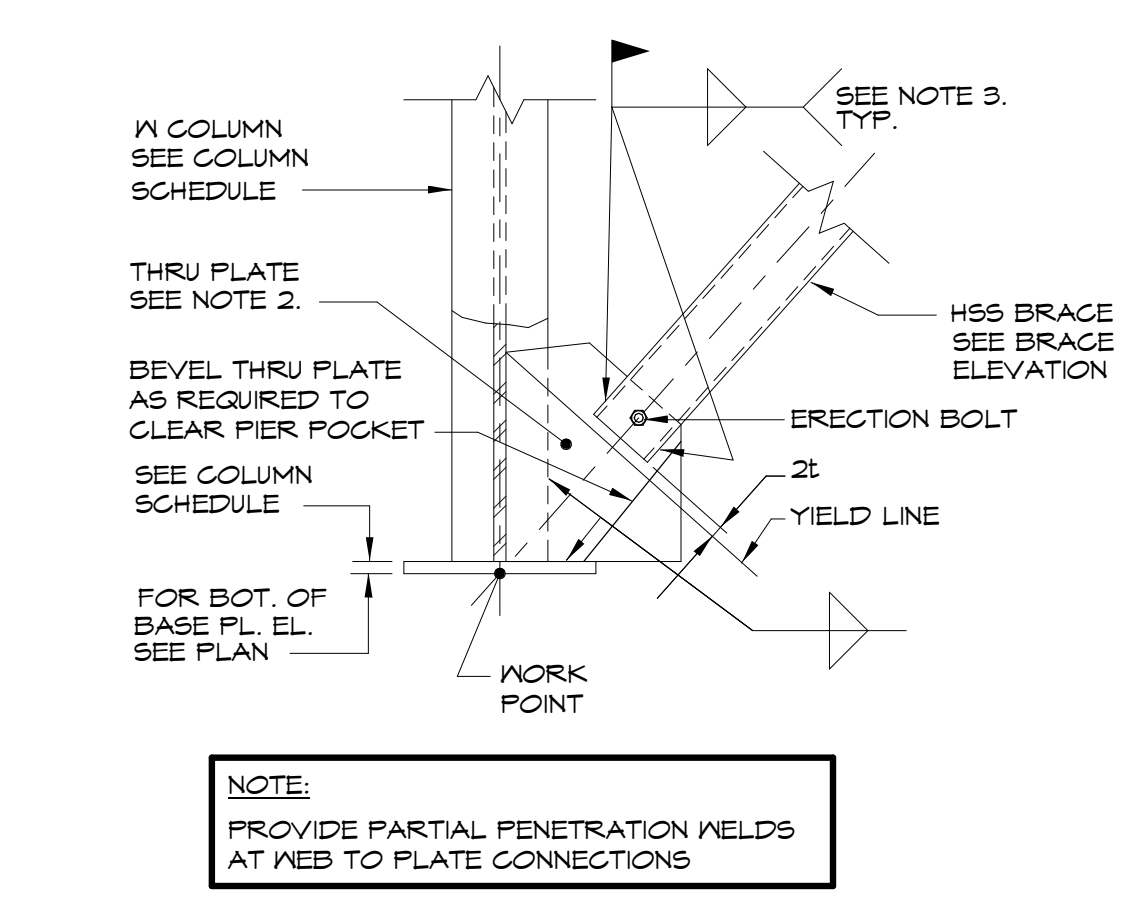
5 BRACE "E"
1/8" = 1'-0"



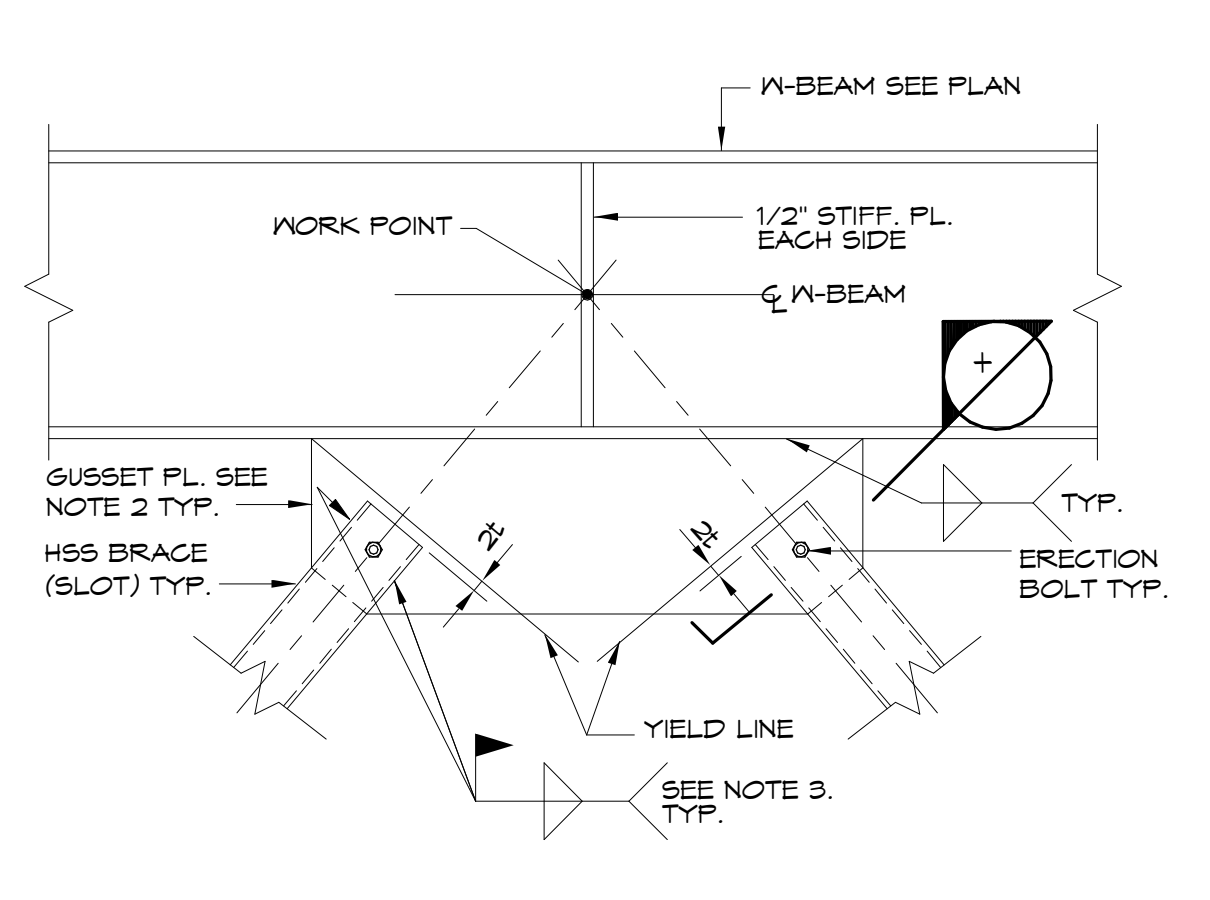
6 BRACE "F"
1/8" = 1'-0"



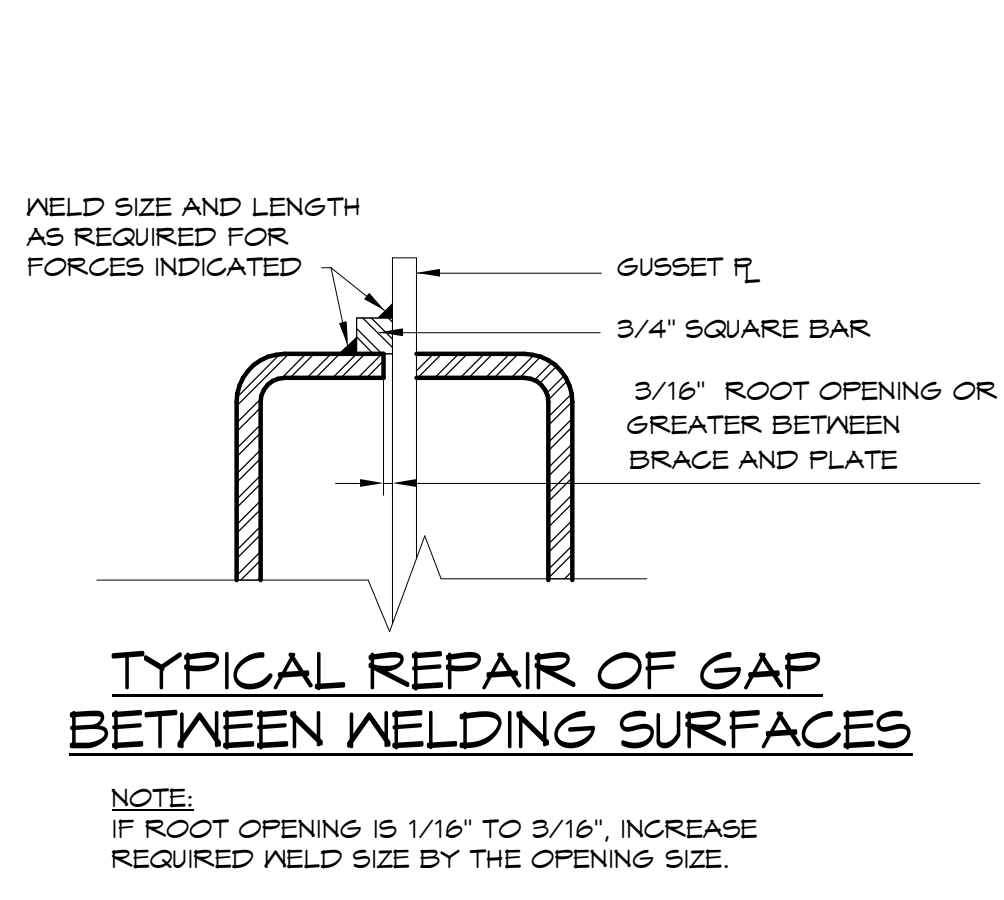
A DETAIL
3/4" = 1'-0"



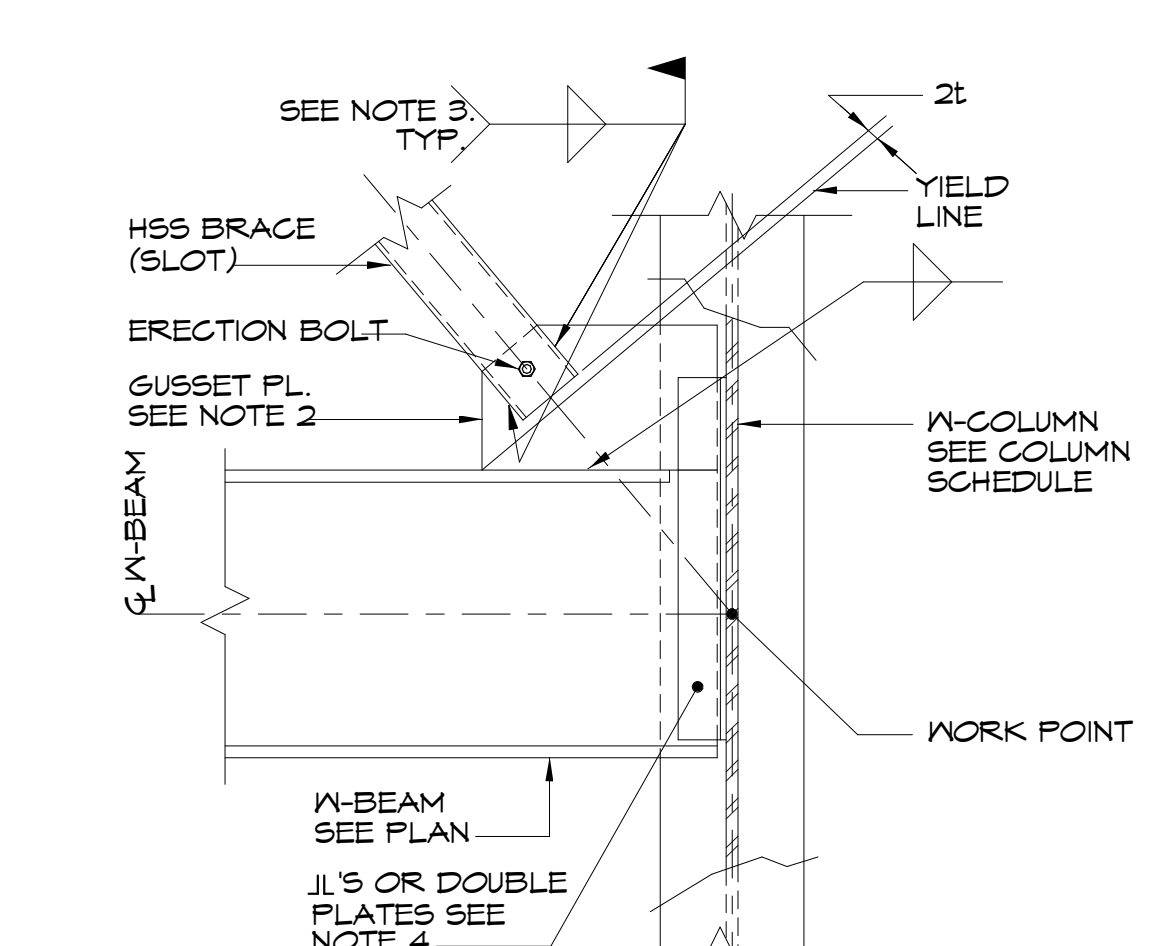
B DETAIL
3/4" = 1'-0"



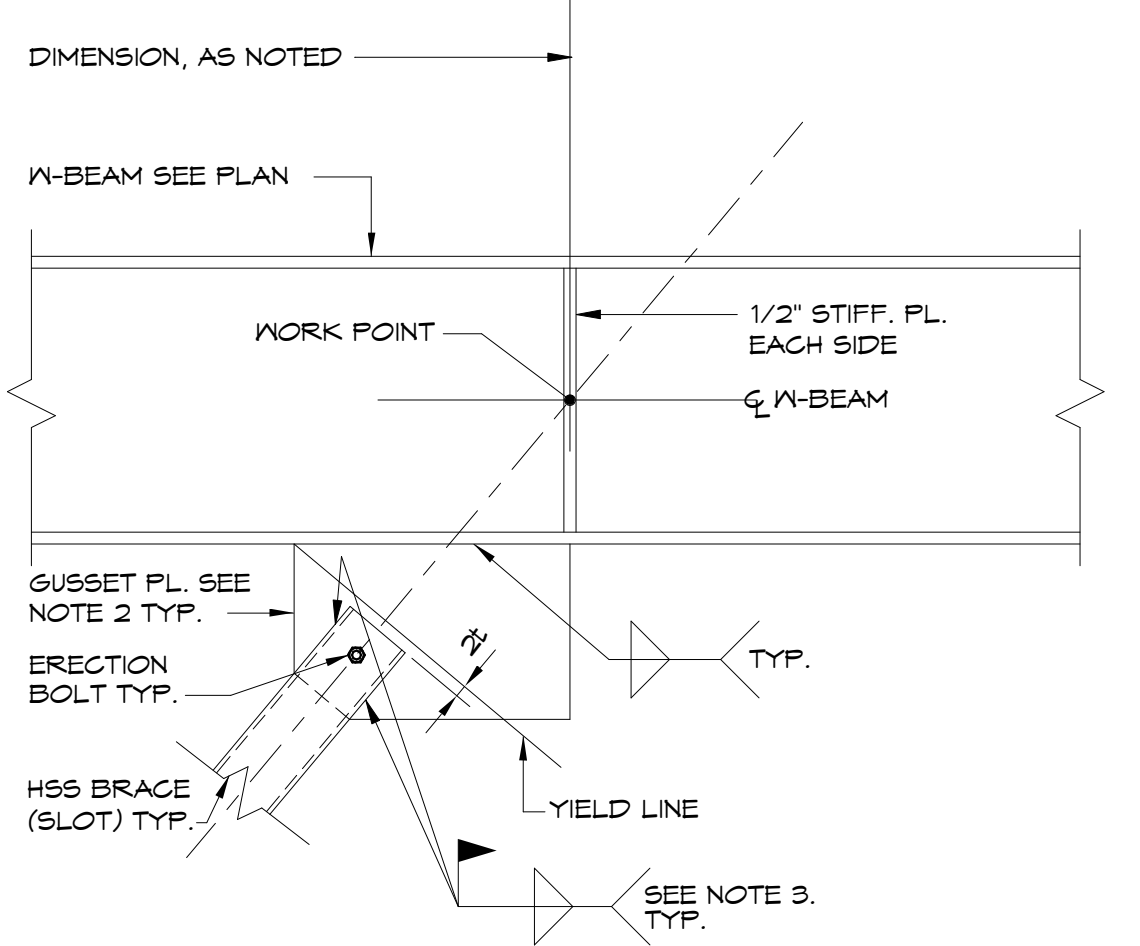
C DETAIL
3/4" = 1'-0"



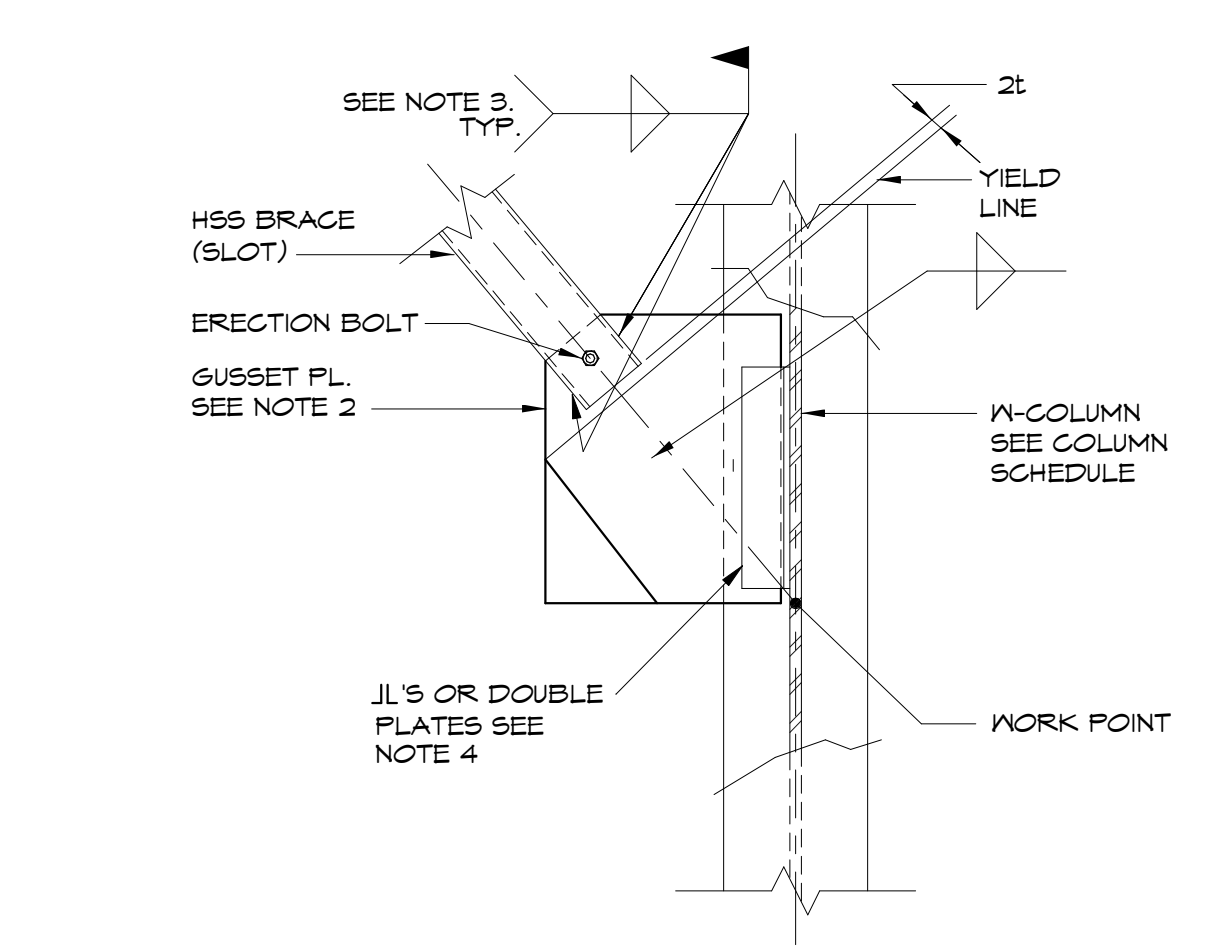
D DETAIL
3/4" = 1'-0"



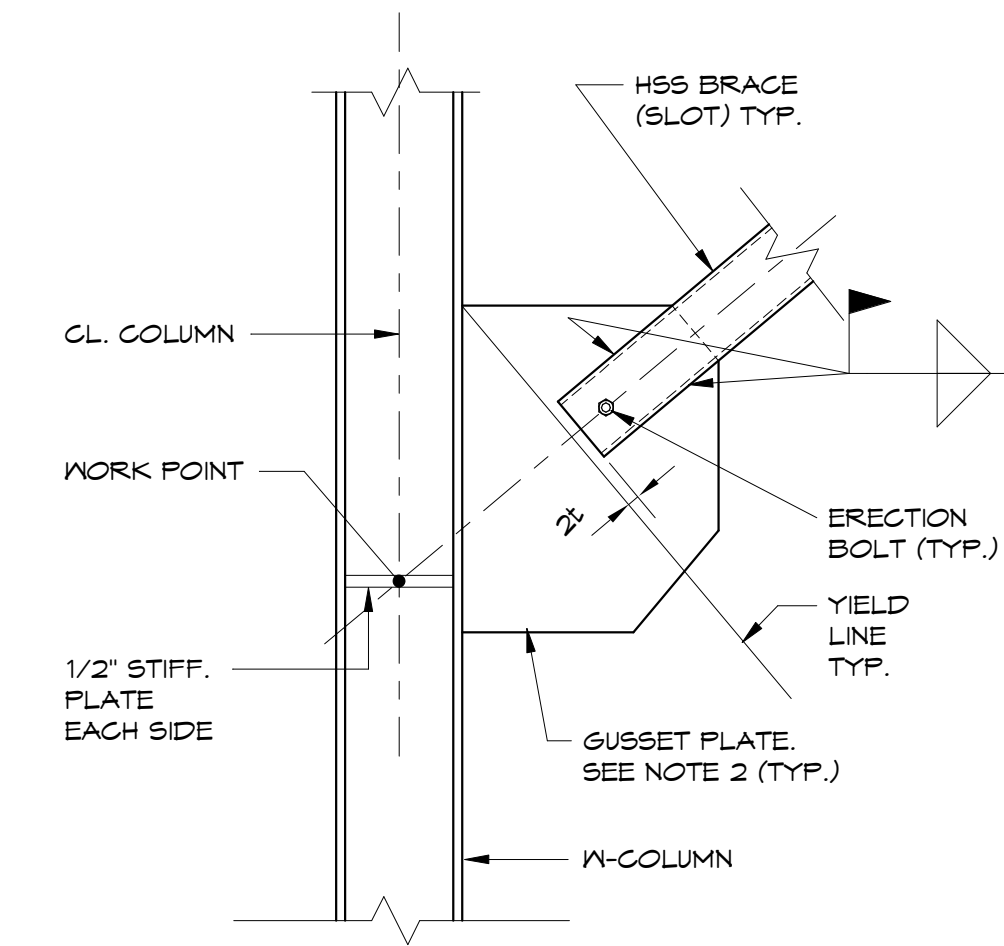
E DETAIL
3/4" = 1'-0"



F DETAIL
3/4" = 1'-0"



G DETAIL
3/4" = 1'-0"



H DETAIL
3/4" = 1'-0"