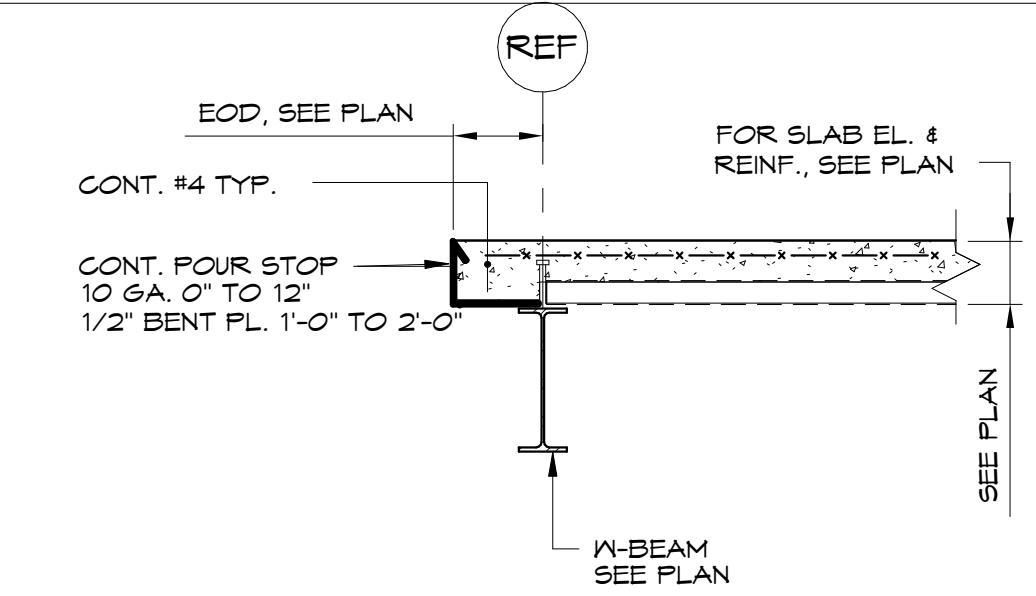
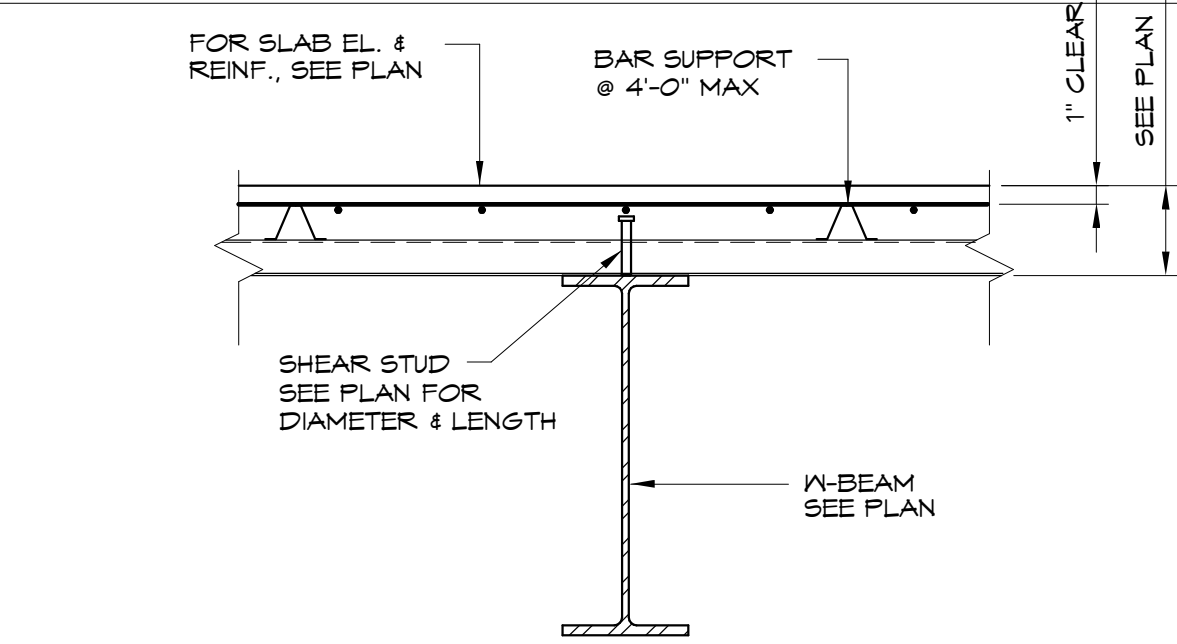


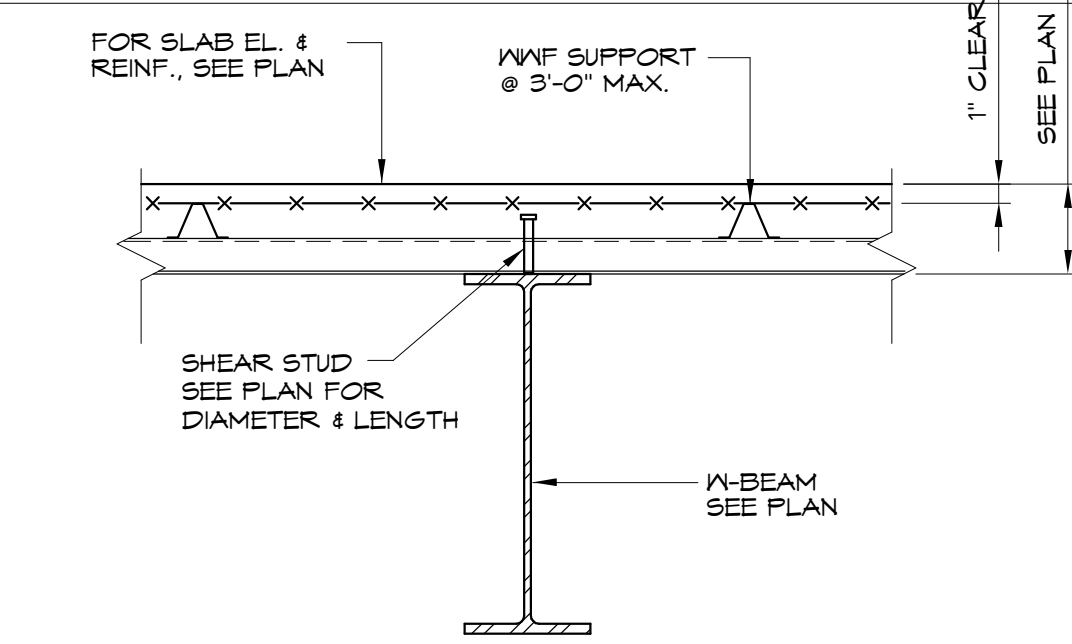
A TYPICAL CONCRETE FLOOR
EDGE DETAIL (COMPOSITE DECK)
1/2" = 1'-0"



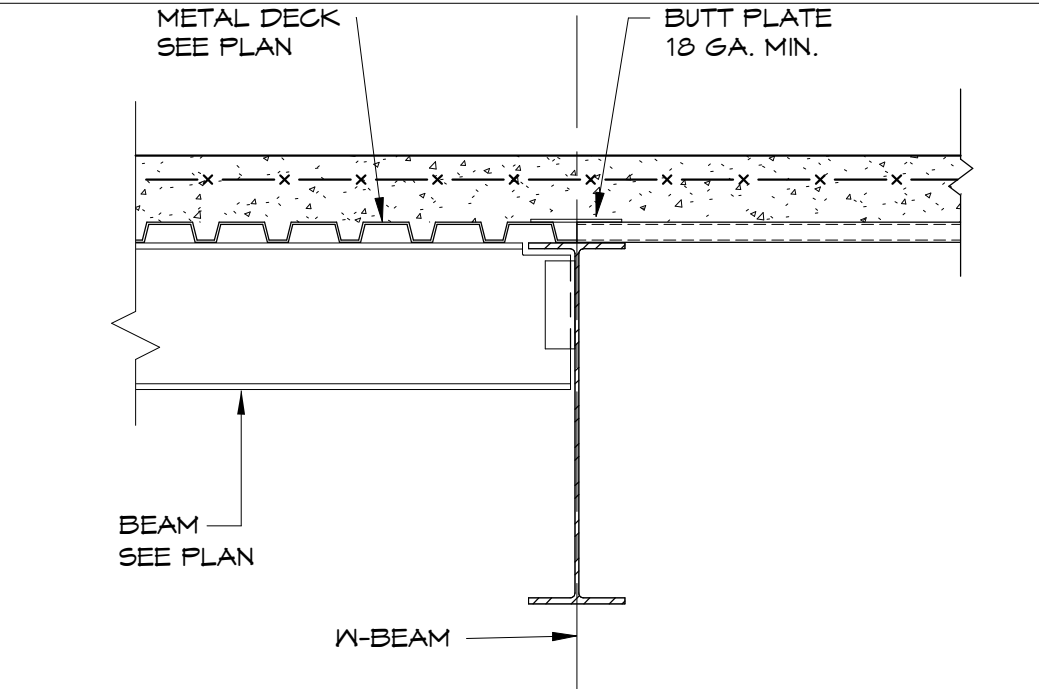
B TYPICAL CONCRETE FLOOR
EDGE DETAIL (COMPOSITE DECK)
1/2" = 1'-0"



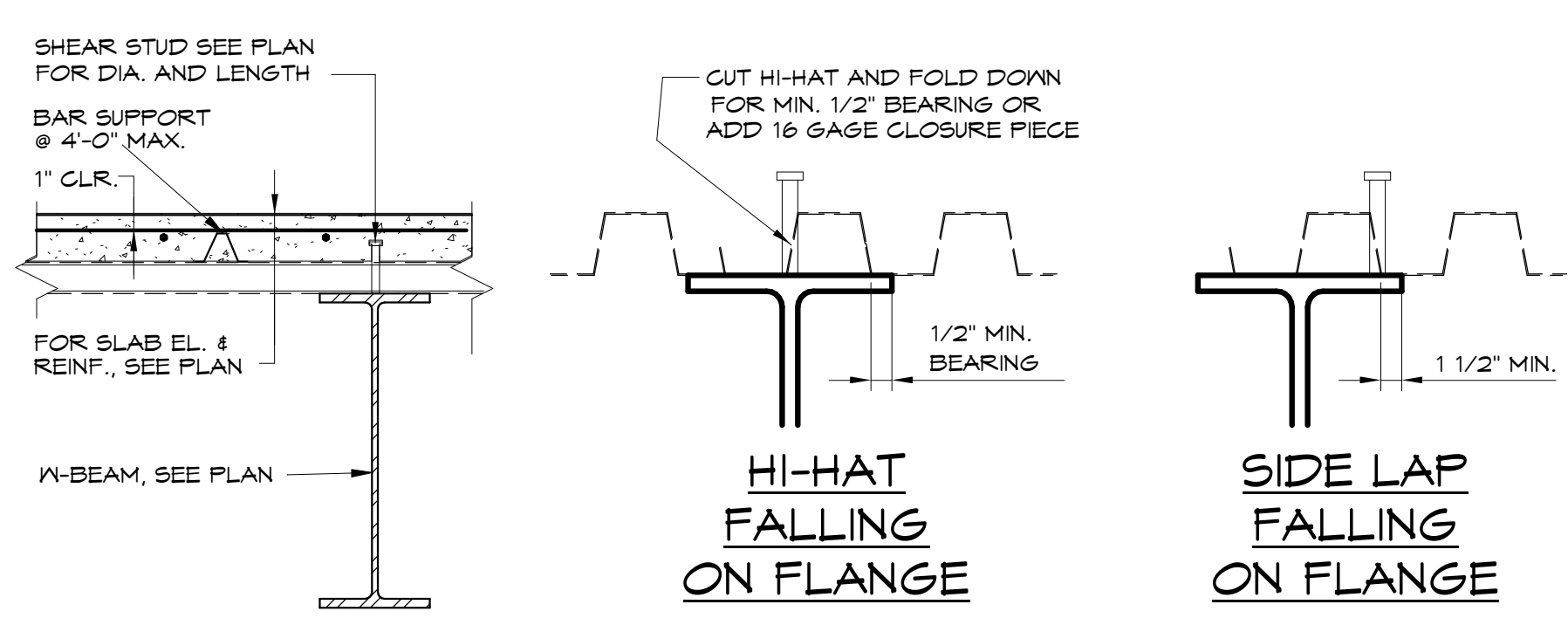
C TYPICAL SHEAR STUD DETAIL (REBAR)
3/4" = 1'-0"



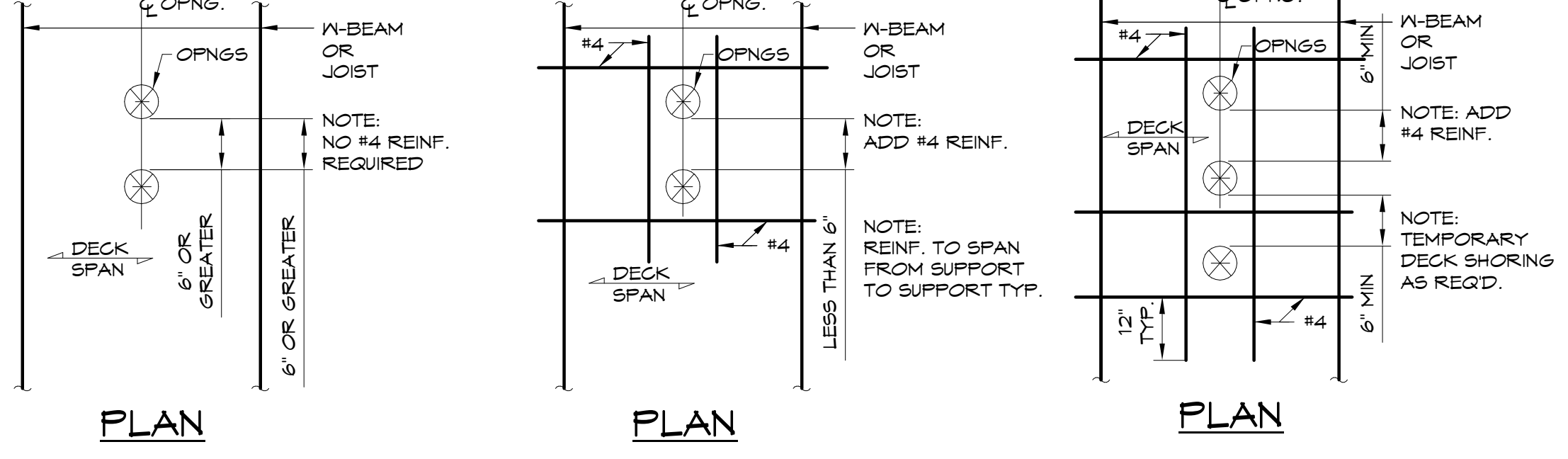
D TYPICAL SHEAR STUD DETAIL (WVF)
3/4" = 1'-0"



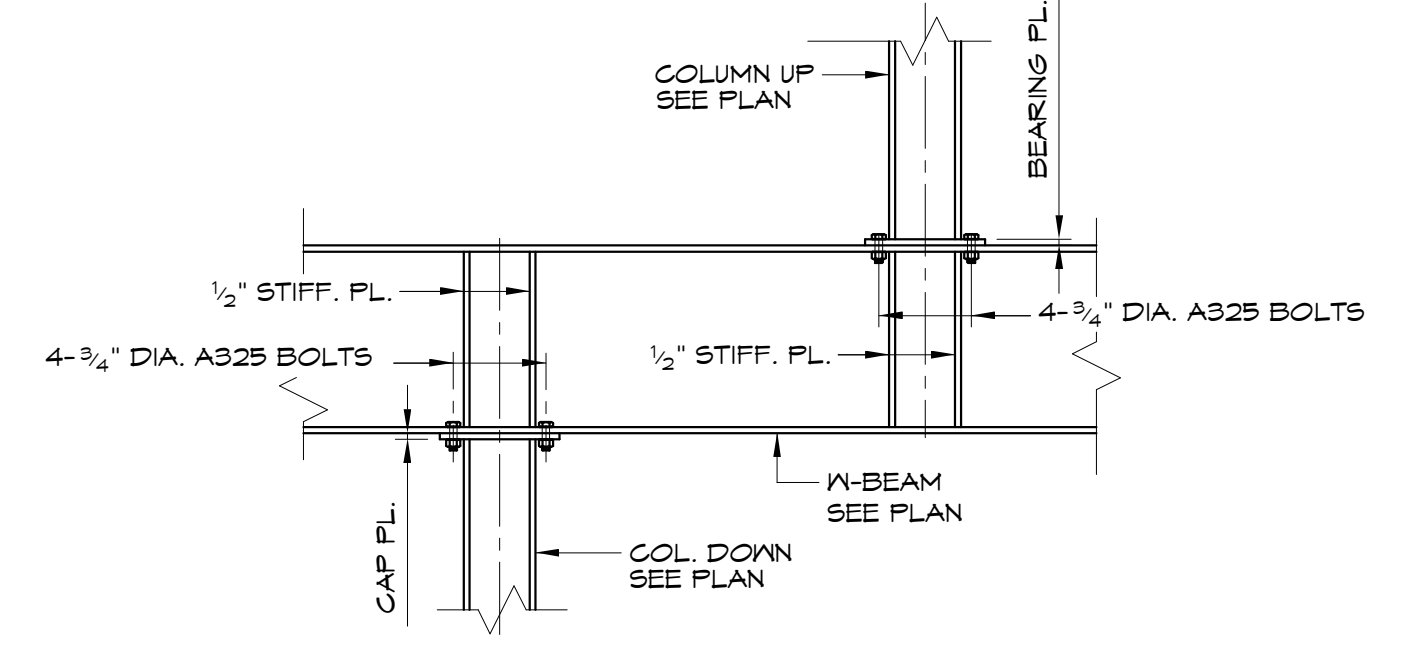
E CHANGE IN DIRECTION OF DECK
3/4" = 1'-0"



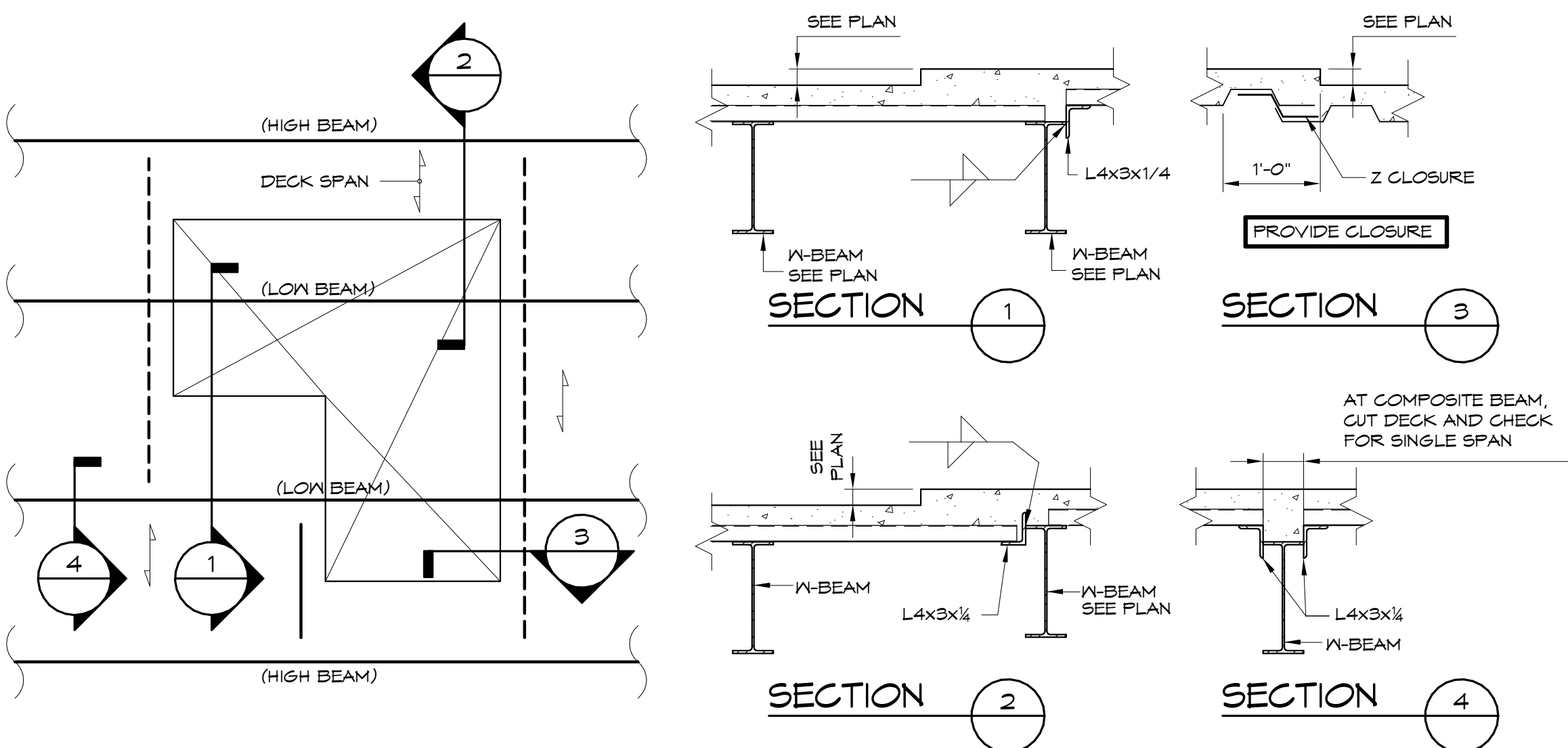
F TYPICAL SHEAR STUD DETAIL
3/4" = 1'-0"



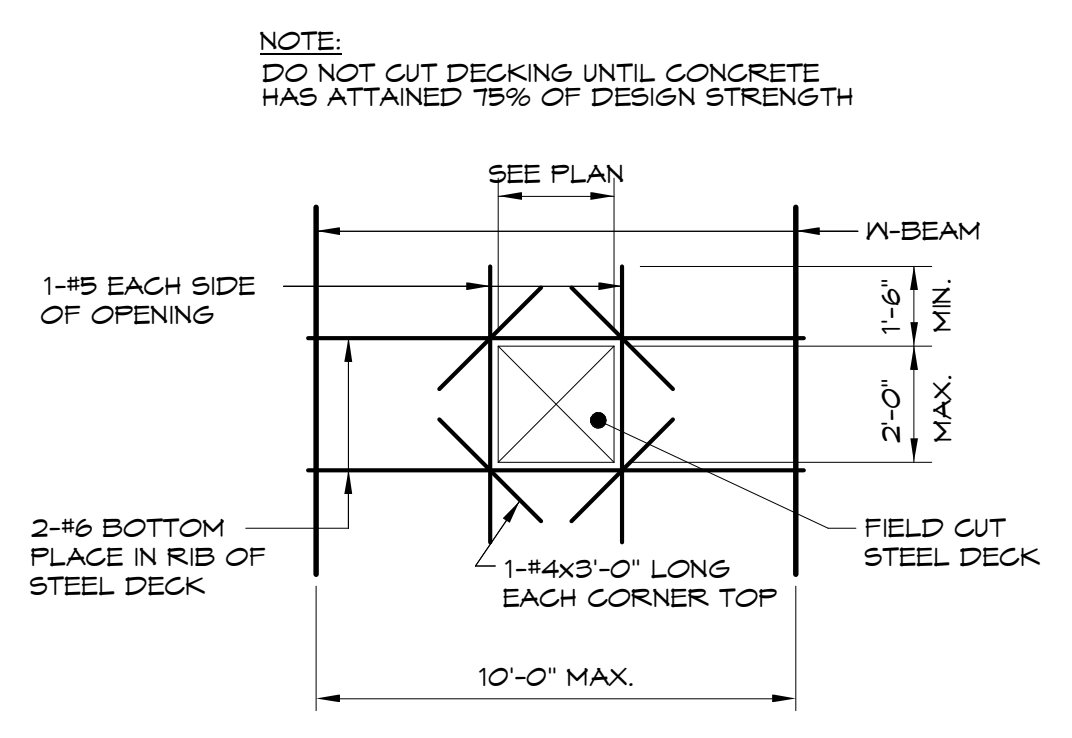
G TYPICAL SLEEVE OPENING REINFORCING DETAIL
IN CONCRETE ON STEEL DECK
3/4" = 1'-0"



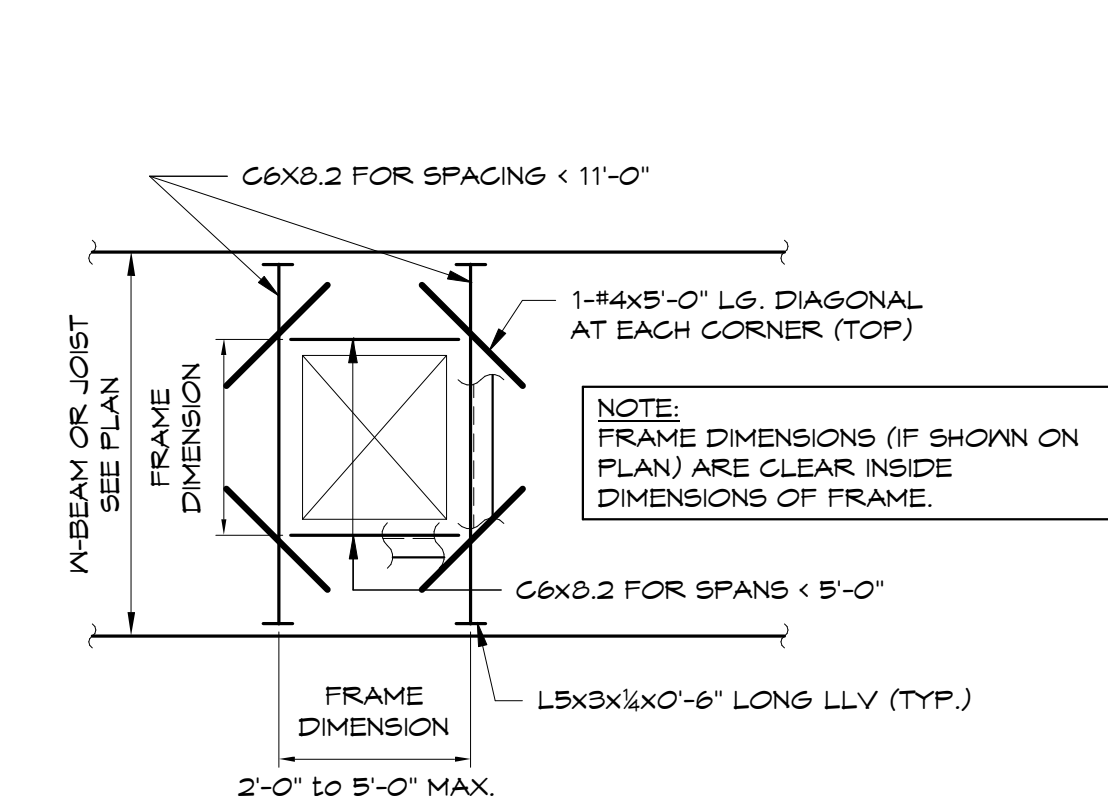
H TYPICAL COLUMN TRANSFER DETAIL
3/4" = 1'-0"



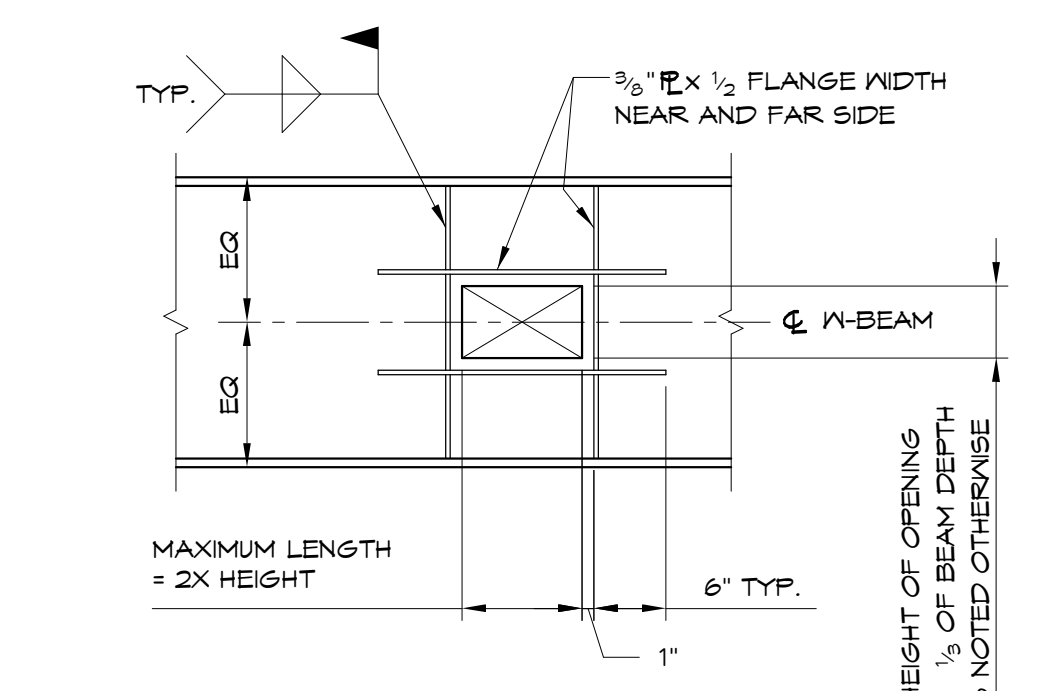
J DETAILS OF STEEL DECK AT CHANGE IN SLAB ELEVATION
3/4" = 1'-0"



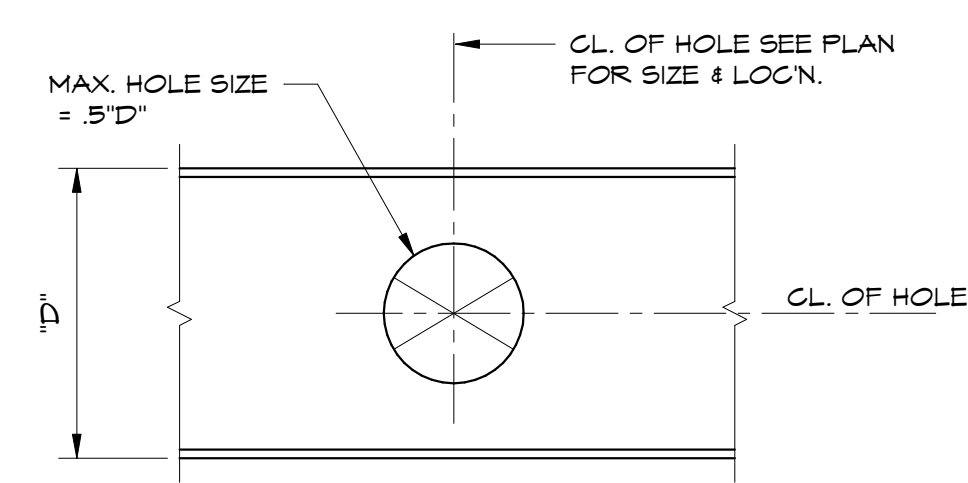
K FLOOR OPENING IN CONCRETE
ON STEEL DECK
1/4" = 1'-0"



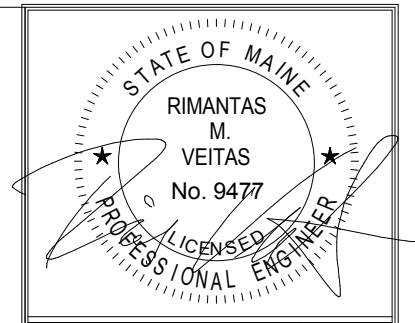
L TYP. FLOOR OPENING FRAMING DETAIL
1/2" = 1'-0"



M BEAM WEB OPENING
REINFORCING DETAIL
3/4" = 1'-0"



N HOLE THRU BEAM WEB DETAIL
3/4" = 1'-0"



Prepared For:
0 Hancock Street LLC

Consulting Engineer:
VEITAS ENGINEERS
689 Granite Street, Suite 101
Brunswick, Massachusetts 02906
TEL: (781) 666-2808 FAX: (781) 666-2005

Architect:
ARCHETYPE architects
48 Union Wharf Portland, Maine 04101
(207) 772-6022 Fax: (207) 772-4056

Project:
0 HANCOCK STREET
0 HANCOCK STREET PORTLAND, MAINE

Revisions:	08-11-17	Issued for Foundation Permit
	08-31-17	Permit Set
	09-15-17	Steel Bid Set
	09-22-17	Pile Bid Set
	09-29-17	Concrete Bid Set
	10-06-17	Issued for Permit

Date: **08/11/17**
Scale: **Typical Details**

S203