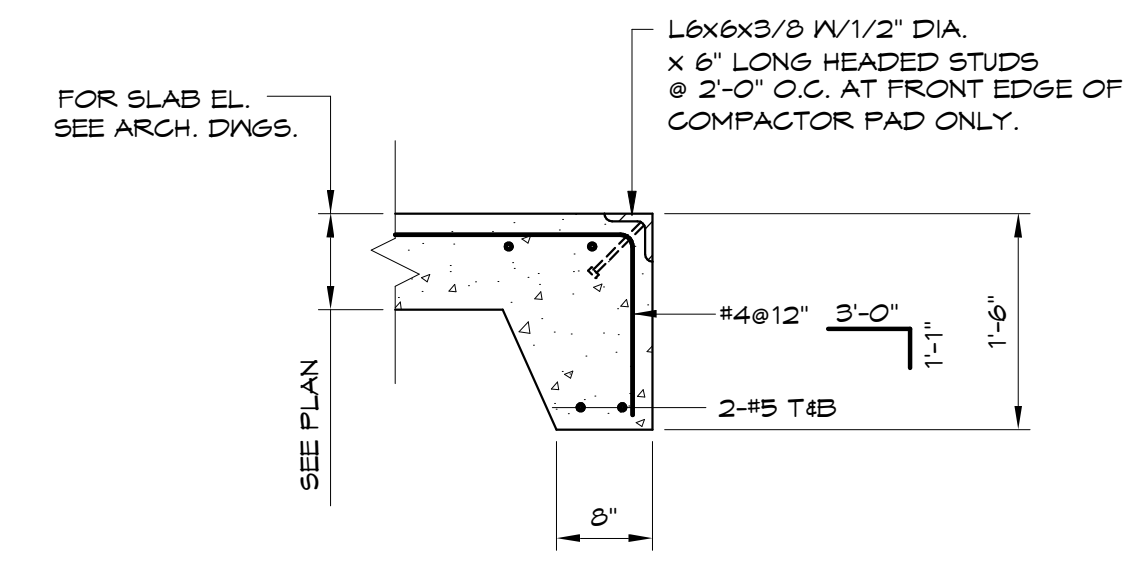
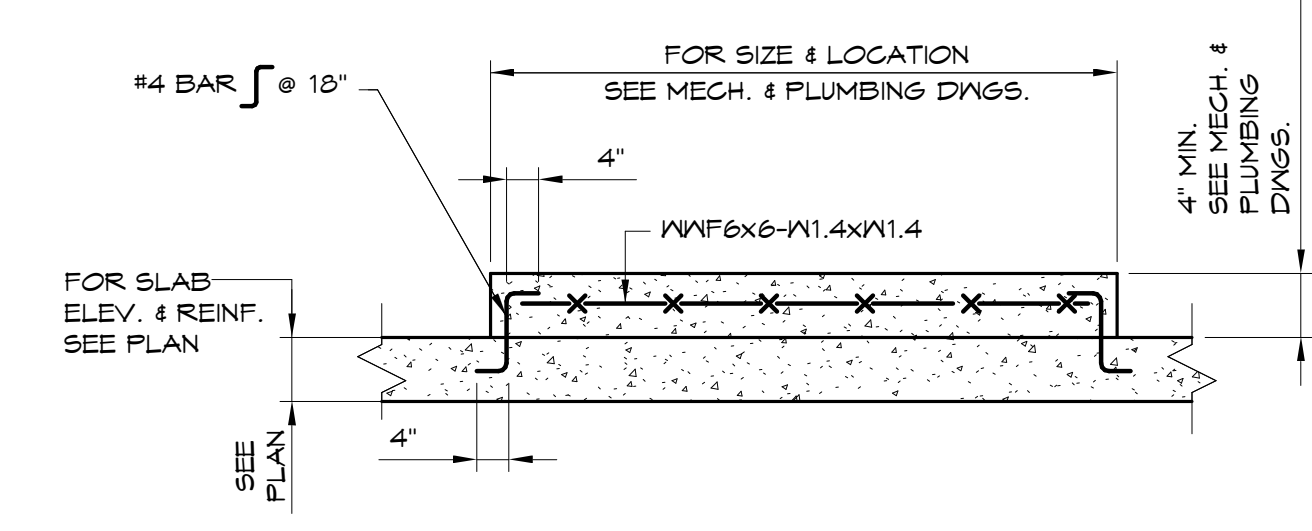


A ISOLATION JOINT DETAIL AT COLUMNS
1/2" = 1'-0"



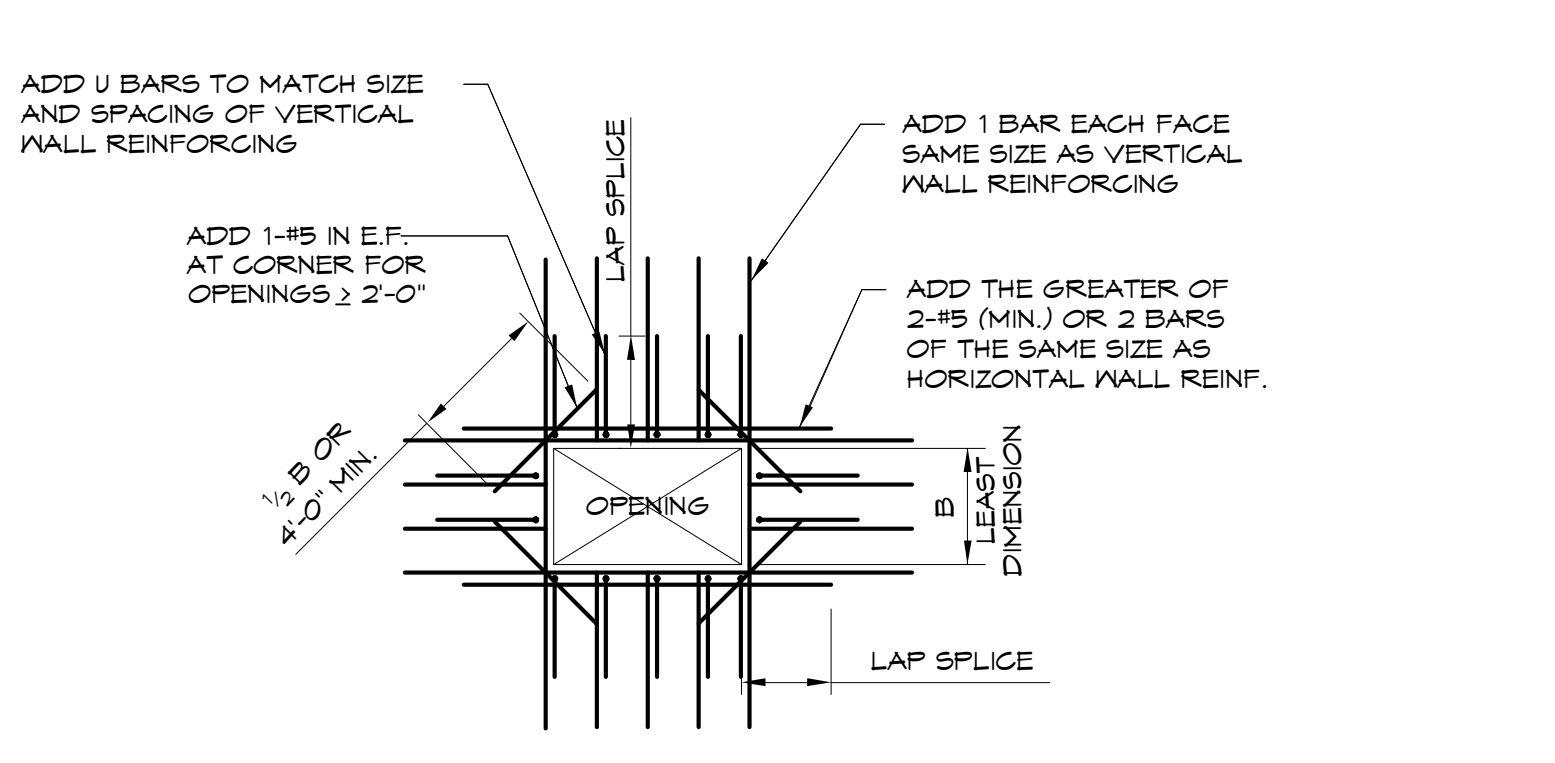
B TYPICAL EXTERIOR PAD EDGE DETAIL
3/4" = 1'-0"



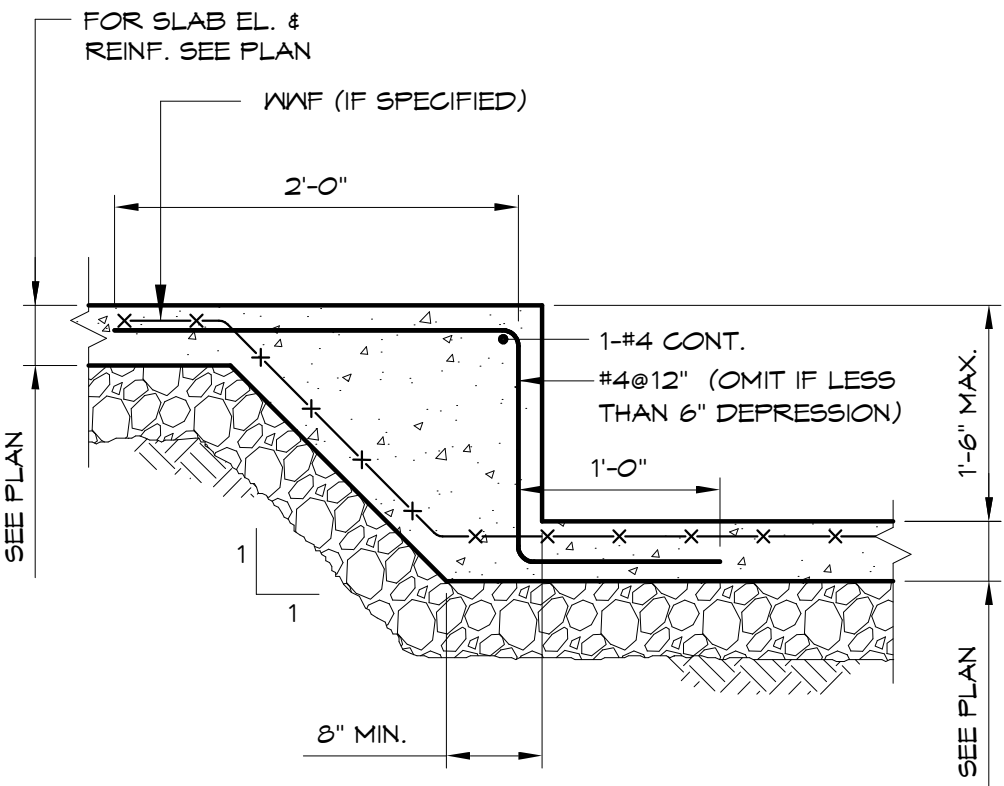
C TYPICAL MECHANICAL EQUIPMENT PAD
1/2" = 1'-0"

BAR SIZE	"LAP SPLICES" ALL CONCRETE	TENSION LAP SPLICES				"COMPRESSION" "LAP SPLICES" ALL CONCRETE
		f _c '=3000		f _c '=4000		
		TOP BARS	OTHER BARS	TOP BARS	OTHER BARS	
3	14"	29"	21"	24"	19"	12"
4	18"	37"	24"	32"	25"	15"
5	23"	46"	36"	40"	31"	19"
6	27"	56"	43"	48"	37"	23"
7	32"	61"	63"	70"	53"	27"
8	36"	93"	72"	79"	61"	30"
9	41"	105"	81"	90"	69"	34"
10	46"	118"	91"	101"	78"	39"
11	50"	131"	101"	112"	86"	43"

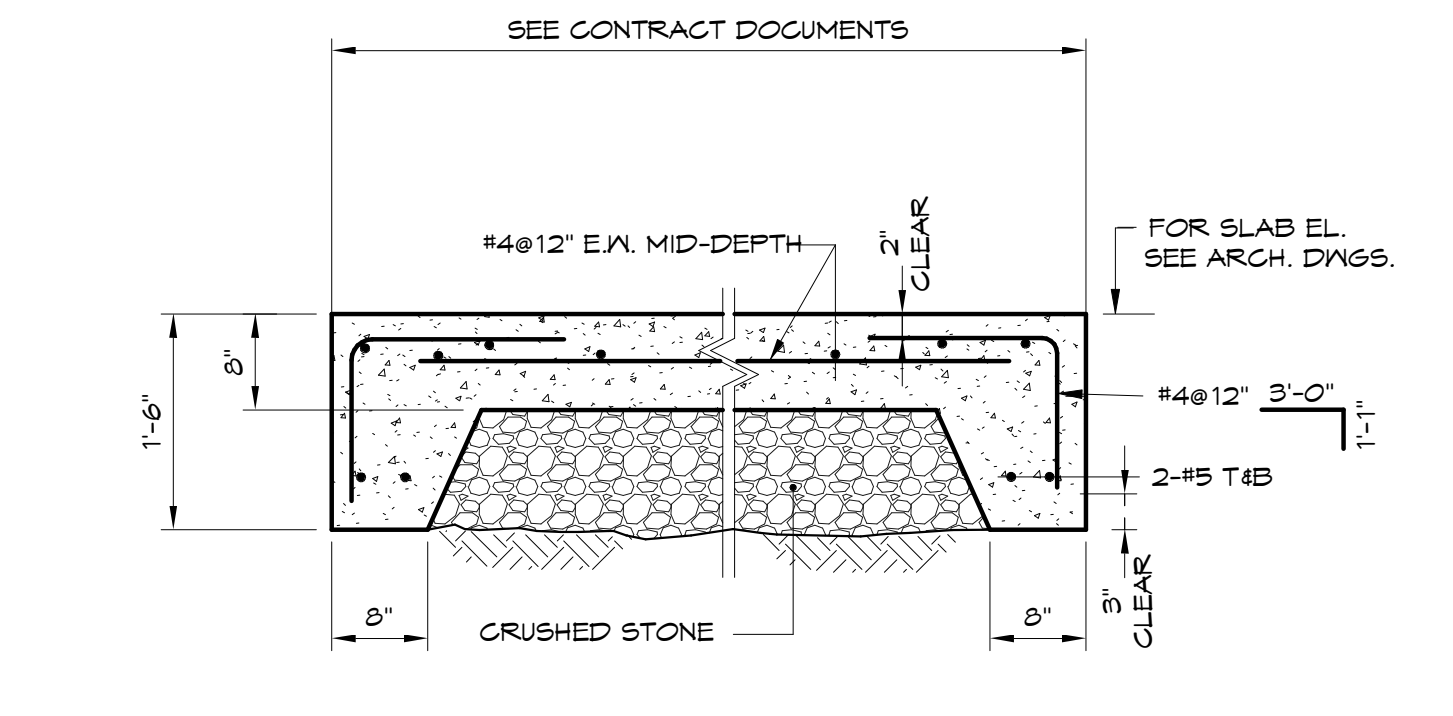
NOTES:
1. ALL SPLICES TO BE "LAP SPLICES" UNLESS NOTED OTHERWISE IN SECTIONS.
2. TENSION AND COMPRESSION LAP SPLICE WILL BE INDICATED ON PLANS AND SECTIONS.
3. A TOP BAR IS A HORIZONTAL WITH AT LEAST 12" OF FRESH CONCRETE BELOW.



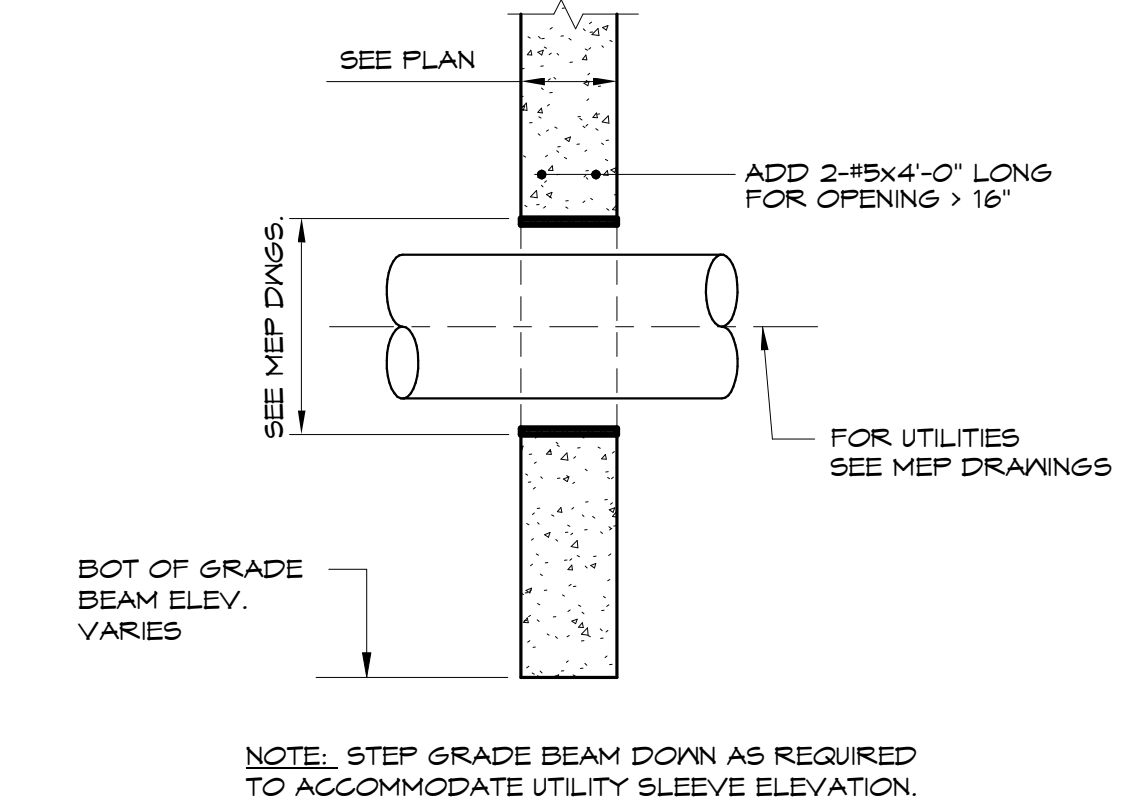
E TYPICAL CONCRETE GRADE BEAM OPENING
1/4" = 1'-0"



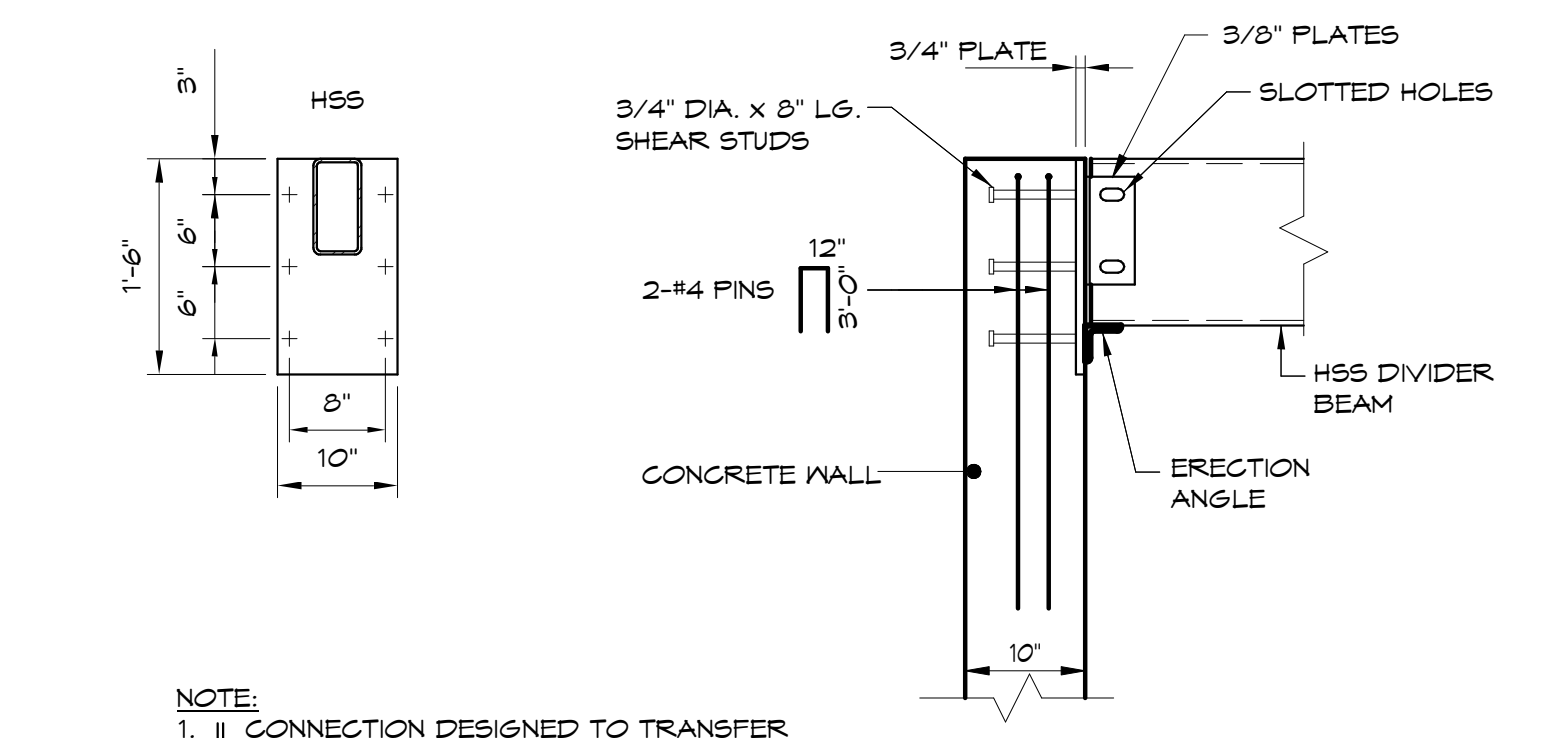
F DEPRESSION AT SLAB ON GRADE
3/4" = 1'-0"



G TYPICAL EXTERIOR COMPACTOR PAD DETAIL
3/4" = 1'-0"

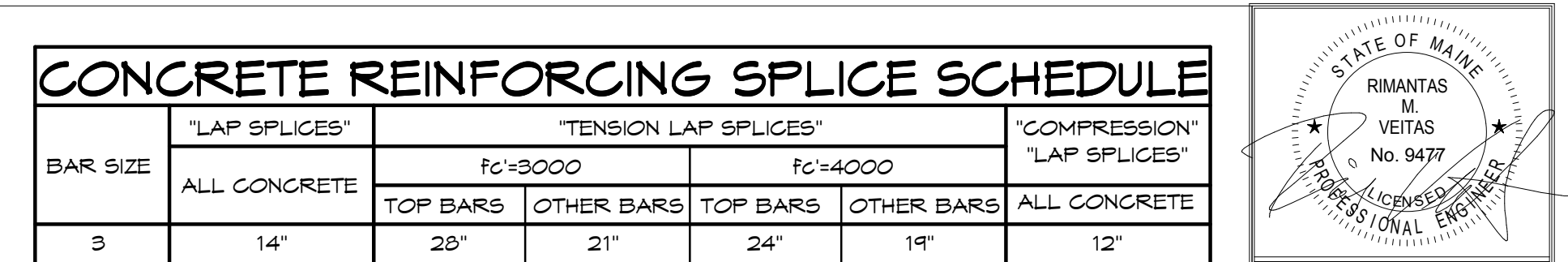


H TYPICAL UTILITY SLEEVE
3/4" = 1'-0"



J TYPICAL PLATE INSERT FOR STEEL CONNECTIONS DETAIL
3/4" = 1'-0"

NOTE:
1. ALL CONNECTION DESIGNED TO TRANSFER SHEAR TO FACE OF EMBEDDED PLATES.



Prepared For:
0 Hancock Street LLC

Consulting Engineer:
VEITAS ENGINEERS
engineers
680 Granite Street, Suite 101
Portland, Maine 04101
TEL: (207) 772-6022 FAX: (207) 772-4056

Architect:
ARCHETYPE architects
48 Union Wharf Portland, Maine 04101
(207) 772-6022 Fax: (207) 772-4056

Project:
0 HANCOCK STREET
0 HANCOCK STREET
PORTLAND, MAINE

Revisions:
08-11-17 Issued for Foundation Permit
08-31-17 Permit Set
09-15-17 Steel Bid Set
09-22-17 Pile Bid Set
09-29-17 Concrete Bid Set
10-06-17 Issued for Permit

Date: 08/11/17
Scale: Typical Details

S202