

**PLANT LIST**

**Deciduous and Shade Trees - \* All Trees to be Matched Specimens - (MS)**

AR	6	3"-3.5" cal.	Acer rubrum 'Karpick' - Karpick Red Maple (MS)
QR	6	3"-3.5" cal.	Quercus robur x bicolor 'Long' - Regal Prince Oak (MS)
PA	8	3.5"-4" cal.	Platanus x acerifolia 'Morton Circle' - Exclamation London Planetree (MS)
VF	4	3.5"-4" cal.	Ulmus Americana 'Valley Forge' - Valley Forge American Elm (MS)

**Ornamental Trees - Trees to be Matched Specimens - (MS)**

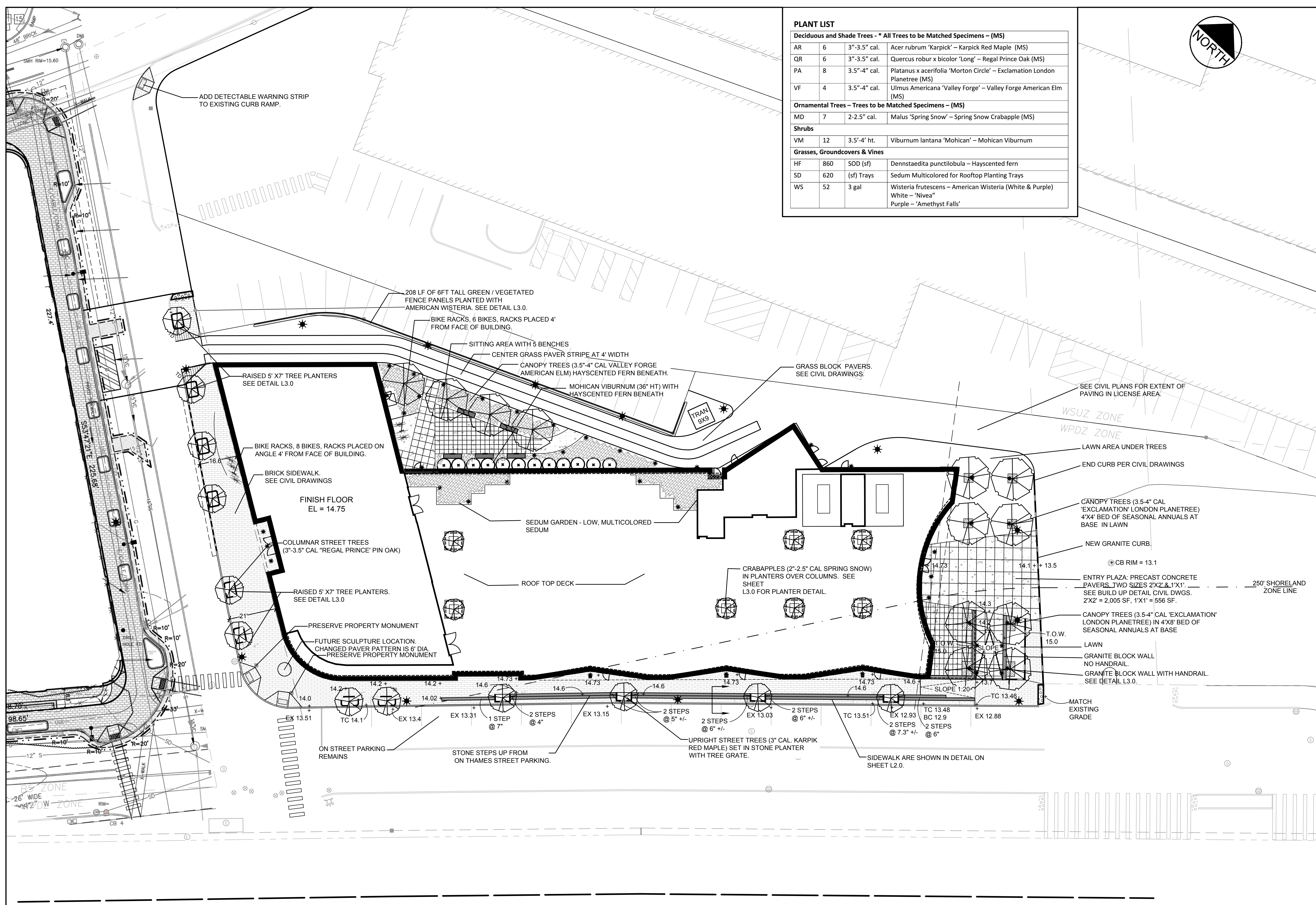
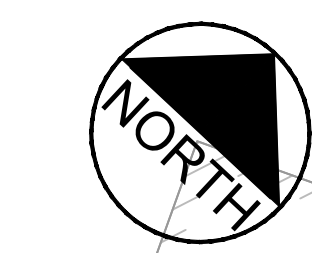
MD	7	2-2.5" cal.	Malus 'Spring Snow' - Spring Snow Crabapple (MS)
----	---	-------------	--

**Shrubs**

VM	12	3.5'-4' ht.	Viburnum lantana 'Mohican' - Mohican Viburnum
----	----	-------------	---

**Grasses, Groundcovers & Vines**

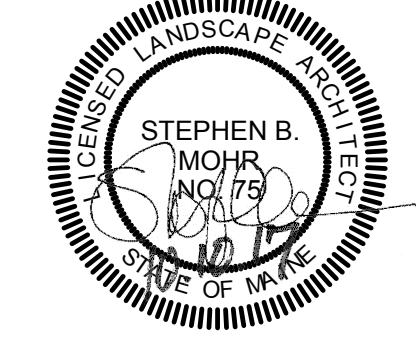
HF	860	SOD (sf)	Dennstaedtia punctilobula - Hayscented fern
SD	620	(sf) Trays	Sedum Multicolored for Rooftop Planting Trays
WS	52	3 gal	Wisteria frutescens - American Wisteria (White & Purple) White - 'Nivea' Purple - 'Amethyst Falls'



1	FINAL SITE PLAN PLANNING BOARD SUBMISSION	MAS	SBM	TS	17.10.10
2	REV FINAL SITE PLAN PLANNING BOARD SUBMISSION	MAS	SBM	TS	17.10.10

File Name:	978-Base-MS 10-5-17	MAS	SBM	TS	17.10.10
Author:	P.E. STEPHEN R. BUSHEY	DWN.	CHKD.	DSGN.	DATE

Permit Seal



Client/Project  
**O HANCOCK LLC**

THAMES STREET SITE  
PORTLAND, MAINE

Title  
**LANDSCAPE PLAN**

Project No. 195350450 Scale 1" = 20'

Sheet L-1.0

