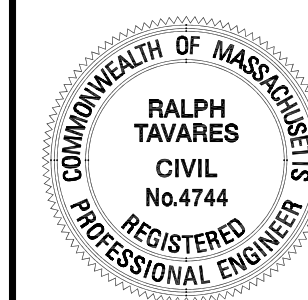


THE PLANS, IDEAS & DESIGNS SHOWN ON THESE DRAWINGS ARE THE PROPERTY OF R & S TAVARES ASSOCIATES, DEVISED SOLELY FOR THIS CONTRACT. THESE PLANS SHALL NOT BE USED, IN WHOLE OR IN PART, FOR ANY PURPOSE FOR WHICH THEY WERE NOT INTENDED WITHOUT THE EXPRESS WRITTEN CONSENT OF R & S TAVARES ASSOCIATES ©

REVISION



PROFESSIONAL STAMP



PROJECT TITLE

COMPLETE ACCESS STAIRS & RAMPS
 CODE: IBC 2006, 2007 UBC

SHEET TITLE
RAMP 30" NOTES

PROJECT NUMBER

10027

DRAWN BY
ST

CHECKED BY
RT

DATE

05-14-2010

SHEET NO.

A1.0

HANDRAIL NOTES:

- 1) MANEUVERING CLEARANCE ON EXTERIOR PULL SIDE OF DOOR SHALL BE 24" MINIMUM WITH 60" MINIMUM LANDING IN FRONT OF DOOR.
- 2) HANDRAILS SHALL BE CONTINUOUS ALONG BOTH SIDES. HANDRAILS SHALL BE PARALLEL WITH THE SURFACE AND PROJECT 1/2" ON TOP OF RISER AND 1/2" PLUS 1 TREAD AT BOTTOM RISER.
AT RAMPS WHERE HANDRAIL ARE NOT CONTINUOUS BETWEEN RUNS THE HANDRAIL SHALL EXTEND HORIZONTALLY ABOVE THE LANDING 1/2" MINIMUM BEYOND TOP AND BOTTOM RAMPS
- 3) TOP OF HANDRAILS SHALL BE MOUNTED BETWEEN 33" AND 36" ABOVE THE SURFACE.
- 4) CLEARANCE BETWEEN RAIL AND WALL SHALL BE A MINIMUM OF 1 1/2".
- 5) GUARD RAILS ARE TO BE DESIGNED FOR A CONCENTRATED LOAD OF 200# APPLIED @ ANY POINT AND ANY DIRECTION ALONG THE RAIL OR A UNIFORM LOAD OF 50#/LF APPLIED HORIZONTALLY @ GUARD HEIGHT.
- 6) BALUSTERS ARE INDEPENDENTLY DESIGNED FOR A CONCENTRATED LOAD OF 200# APPLIED TO ONE SQUARE FOOT OF AREA.
- 7) HANDRAILS SHALL HAVE A CIRCULAR CROSS SECTION WITH AN OUTSIDE DIAMETER OF 1 1/4" MINIMUM AND NOT GREATER THAN 2" MAXIMUM.
- 8) GRIPPING SURFACE SHALL BE UNINTERRUPTED BY POSTS OR OTHER CONSTRUCTION ELEMENTS OR OBSTRUCTIONS.
- 9) HANDRAILS SHALL NOT ROTATE IN THERE FITTINGS.
- 10) ENDS OF HANDRAILS SHALL RETURN SMOOTHLY TO FLOOR, WALL OR POST.

2 RAILING NOTES

SCALE: NTS

REFERENCE IBC 2009

DESIGN LOADS:
 LIVE LOAD- 100 PSF
 HANDRAIL IMPACT- 200 PSF

MATERIALS

ROUND STEEL TUBE- ASTM A513 Fy= 35 KSI
 SQUARE STEEL TUB- ASTM A500 GR. B Fy= 21 KSI
 ALUMINUM SHEET- 3003-H22 Fty= 27 KSI Fcy= 14 KSI
 OR 5052-H34 Fty= 24 KSI Fcy=24 KSI

WELDS

WELDING SHALL BE IN ACCORDANCE WITH AWS D.1.188
 USING E70XX ELECTRODES FOR STEEL

3 STRUCTURAL NOTES

SCALE: NTS

- 1) RAMP SHALL HAVE A RUNNING SLOPE NOT STEEPER THAN 1/12 (8% SLOPE)
- 2) THE MAXIMUM VERTICAL RISE OF RAMP RUN SHALL BE 30" MAXIMUM.
- 3) THE SLOPE PERPENDICULAR TO THE DIRECTION OF TRAVEL AND THE SLOPE ON LANDINGS SHALL NOT BE STEEPER THAN ONE UNIT VERTICAL IN 48 UNITS HORIZONTAL.
- 4) WHEN CHANGES IN DIRECTION OF TRAVEL OCCUR AT LANDINGS BETWEEN RAMP RUNS, THE LANDING SHALL BE 60"x60" MINIMUM
- 5) MANEUVERING CLEARANCE ON PULL SIDE OF DOOR SHALL BE 18" ON INTERIOR AND 24" EXTERIOR WITH 60" LANDING IN FRONT OF DOOR.
- 6) HANDRAILS SHALL BE CONTINUOUS ALONG BOTH SIDES. HANDRAILS SHALL BE PARALLEL WITH THE SURFACE AND PROJECT 1/2"
- 7) TOP OF HANDRAILS SHALL BE MOUNTED BETWEEN 33" AND 36" ABOVE THE SURFACE.
- 8) CLEARANCE BETWEEN RAIL AND WALL SHALL BE 1 1/2".
- 9) GUARD RAILS SHALL TO BE DESIGNED FOR A CONCENTRATED LOAD OF 200# APPLIED @ ANY POINT AND ANY DIRECTION ALONG THE RAIL OR A UNIFORM LOAD OF 50#/L. F. APPLIED HORIZONTALLY TO THE GUARD HEIGHT.
- 10) BALUSTERS ARE INDEPENDENTLY DESIGNED FOR A CONCENTRATE LOAD OF 200# APPLIED TO ONE SQUARE FOOT OF AREA.
- 11) HANDRAILS SHALL HAVE A CIRCULAR CROSS SECTION WITH AN OUTSIDE MAXIMUM DIAMETER OF 1 1/4" MINIMUM AND 2" MAXIMUM.
- 12) GRIPPING SURFACE SHALL BE UNINTERRUPTED BY POSTS OR OTHER CONSTRUCTION ELEMENTS OR OBSTRUCTIONS.
- 13) HANDRAILS SHALL NOT ROTATE IN THEIR FITTINGS.
- 14) ENDS OF HANDRAILS SHALL RETURN SMOOTHLY TO FLOOR, WALL OR POST.
- 15) STEPS, RAMPS AND PLATFORMS SHALL BE DESIGNED FOR 100 PSF LIVE LOAD.
- 16) SUBMIT SHOP DRAWINGS FOR APPROVAL

1 RAMP NOTES

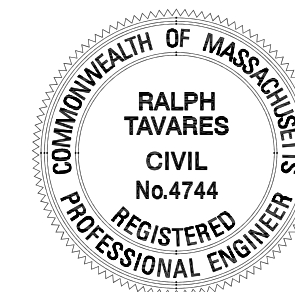
SCALE: NTS

THE PLANS, IDEAS & DESIGNS SHOWN ON THESE DRAWINGS ARE THE PROPERTY OF R & S TAVARES ASSOCIATES, DEVISED SOLELY FOR THIS CONTRACT. THESE PLANS SHALL NOT BE USED, IN WHOLE OR IN PART, FOR ANY PURPOSE FOR WHICH THEY WERE NOT INTENDED WITHOUT THE EXPRESS WRITTEN CONSENT OF R & S TAVARES ASSOCIATES ©

REVISION



PROFESSIONAL STAMP



PROJECT TITLE

COMPLETE ACCESS
 STAIRS & RAMPS
 CODE: IBC 2006, 2007 UBC

SHEET TITLE

RAMP 30"
 FLOOR PLAN
 SIDE VIEW

PROJECT NUMBER

10027

DRAWN BY

ST

CHECKED BY

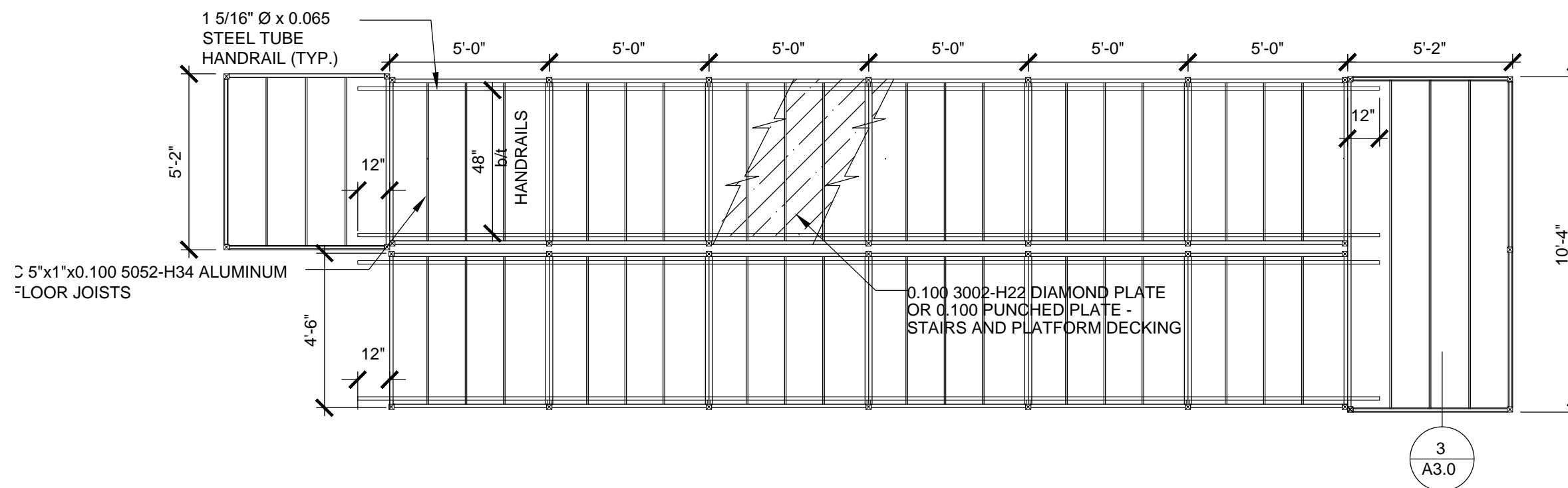
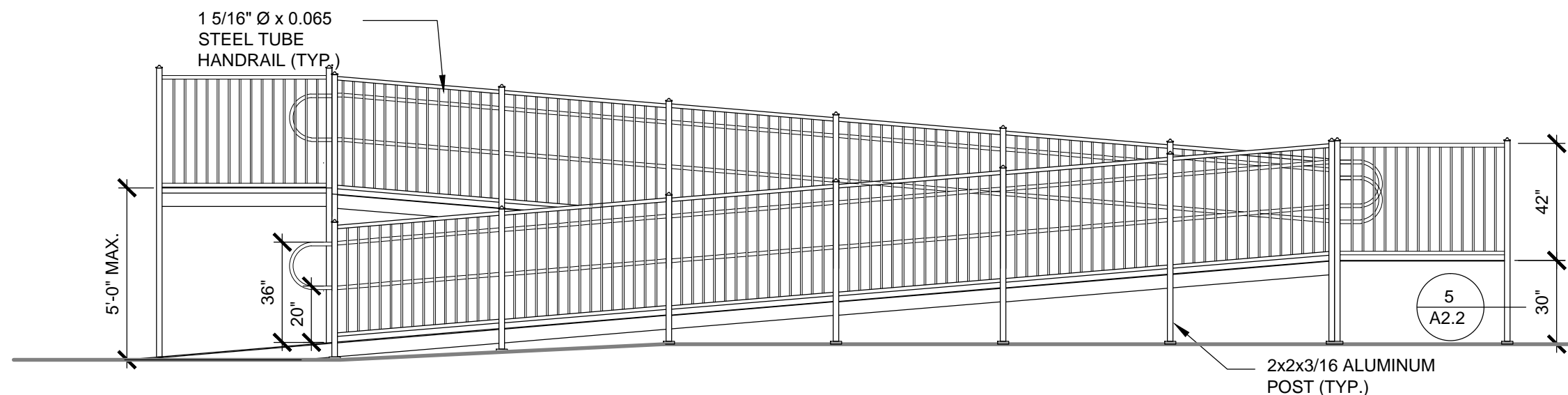
RT

DATE

05-14-2010

SHEET NO.

A2.0

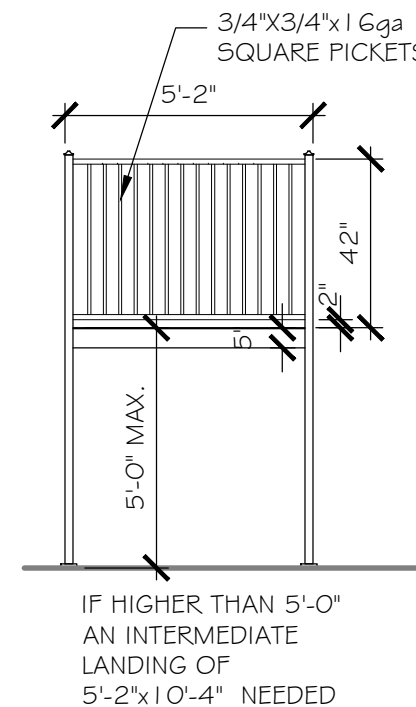
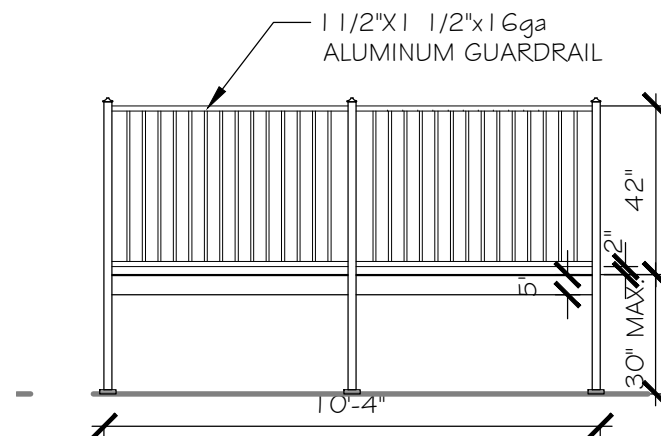
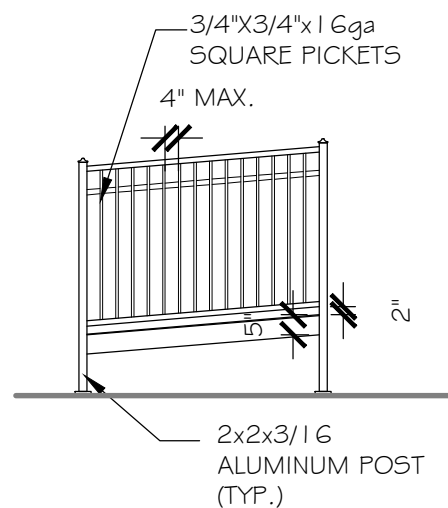
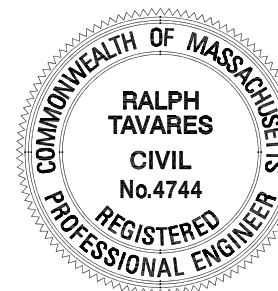


THE PLANS, IDEAS & DESIGNS SHOWN ON THESE DRAWINGS ARE THE PROPERTY OF R & S TAVARES ASSOCIATES, DEVISED SOLELY FOR THIS CONTRACT. THESE PLANS SHALL NOT BE USED, IN WHOLE OR IN PART, FOR ANY PURPOSE FOR WHICH THEY WERE NOT INTENDED WITHOUT THE EXPRESS WRITTEN CONSENT OF R & S TAVARES ASSOCIATES ©

REVISION

△
△
△

PROFESSIONAL STAMP



1 RAMP SIDE RAIL

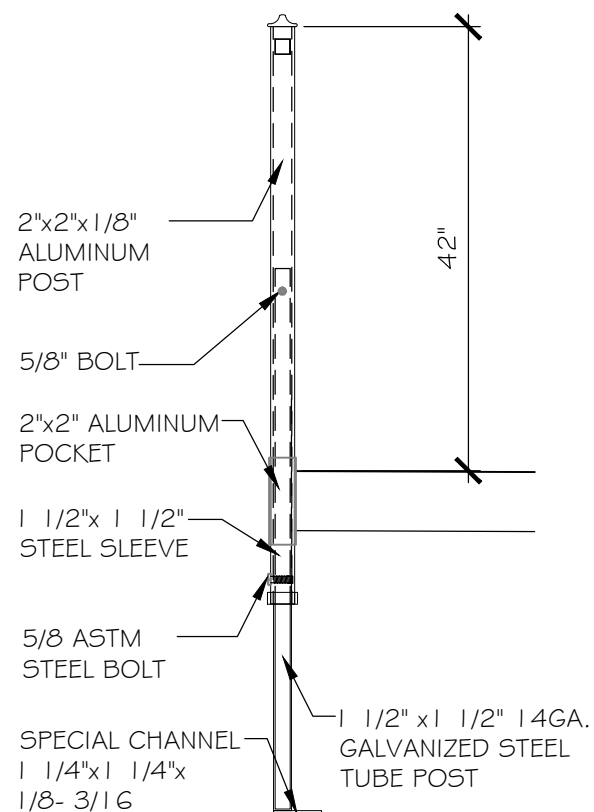
SCALE: 1/4" = 1'-0"

2 RAMP LANDING RAIL

SCALE: 1/4" = 1'-0"

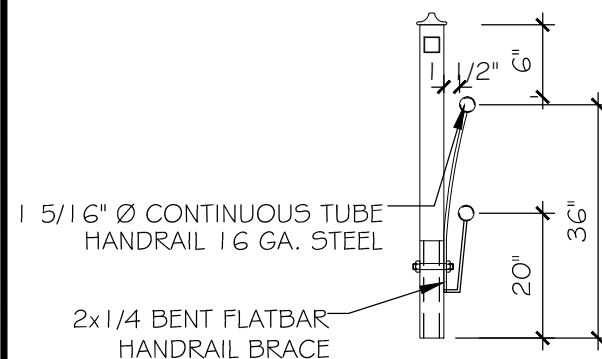
3 RAMP LANDING RAIL

SCALE: 1/4" = 1'-0"



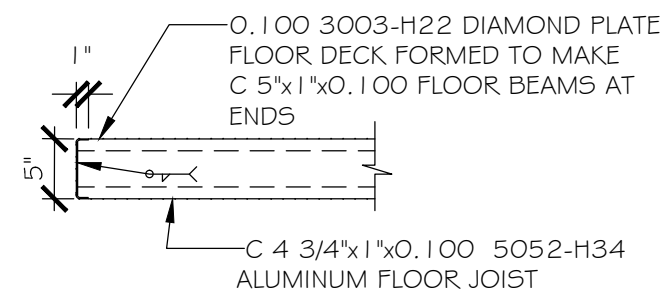
4 POST DETAIL

SCALE: 3/4" = 1'-0"



5 HANDRAIL DETAIL

SCALE: 3/4" = 1'-0"



6 DECK CONNECTION

SCALE: 3/4" = 1'-0"

PROJECT TITLE

COMPLETE ACCESS
 STAIRS & RAMPS
 CODE: IBC 2006, 2007 UBC

SHEET TITLE
 RAMP 30"
 DETAILS

PROJECT NUMBER

10027

DRAWN BY

ST

CHECKED BY

RT

DATE

05-14-2010

SHEET NO.

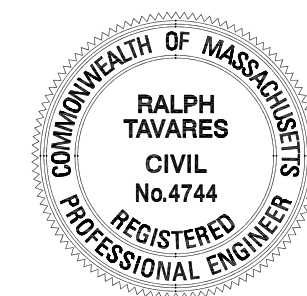
A3.0

THE PLANS, IDEAS & DESIGNS SHOWN ON THESE DRAWINGS ARE THE PROPERTY OF R & S TAVARES ASSOCIATES, DEVISED SOLELY FOR THIS CONTRACT. THESE PLANS SHALL NOT BE USED, IN WHOLE OR IN PART, FOR ANY PURPOSE FOR WHICH THEY WERE NOT INTENDED WITHOUT THE EXPRESS WRITTEN CONSENT OF R & S TAVARES ASSOCIATES ©

REVISION

- △
- △
- △

PROFESSIONAL STAMP



PROJECT TITLE

COMPLETE ACCESS STAIRS & RAMPS
 CODE: IBC 2006, 2007 UBC

SHEET TITLE

RAMP 30" DETAILS & FOOTINGS

PROJECT NUMBER

10027

DRAWN BY

ST

CHECKED BY

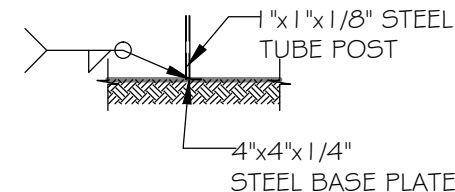
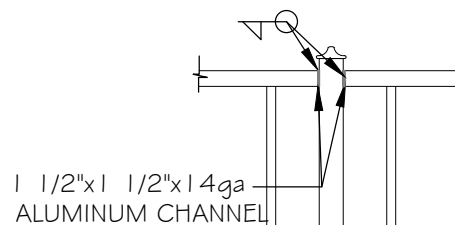
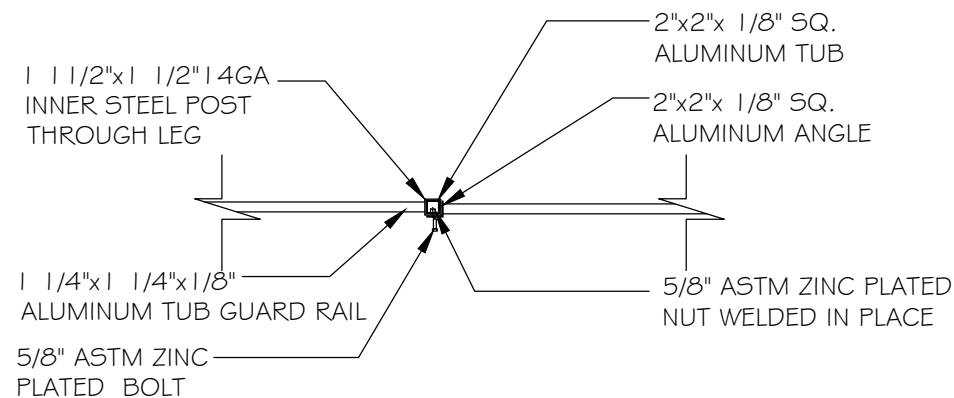
RT

DATE

05-14-2010

SHEET NO.

A4.0



1 DECK CONNECTION

SCALE: 1/4" = 1'-0"

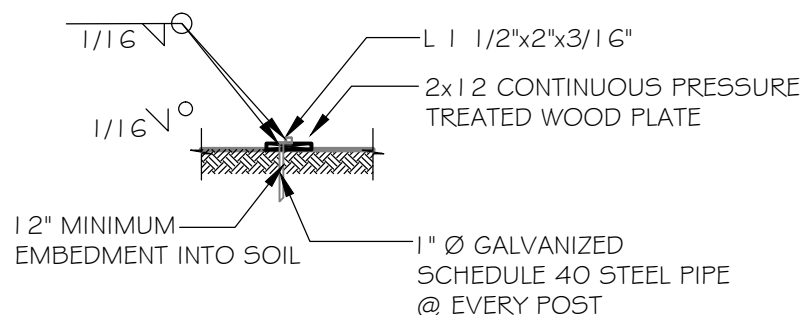
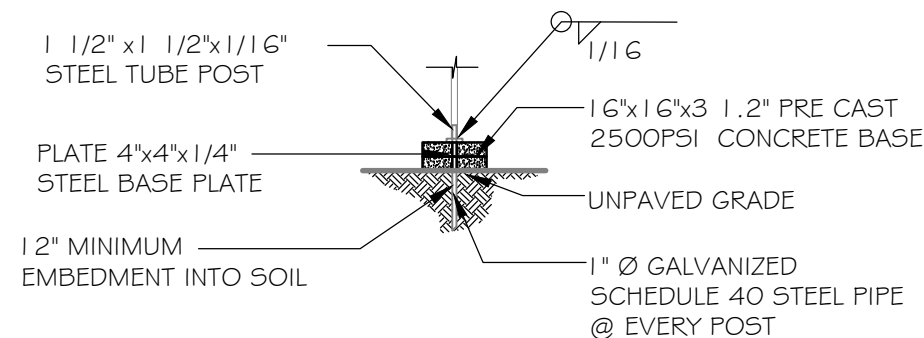
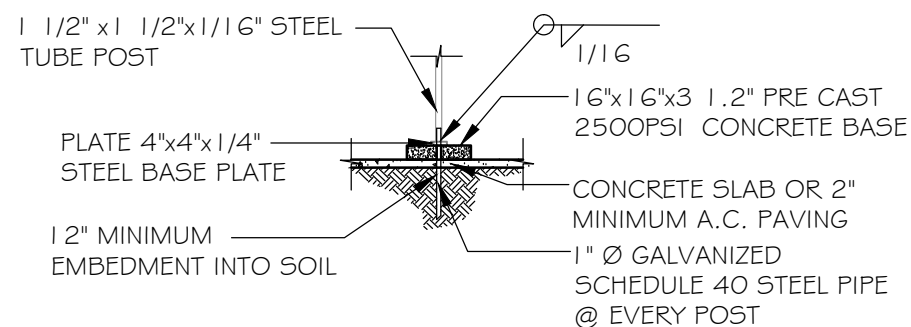
2 RAILING CONNECTION

SCALE: 3/4" = 1'-0"

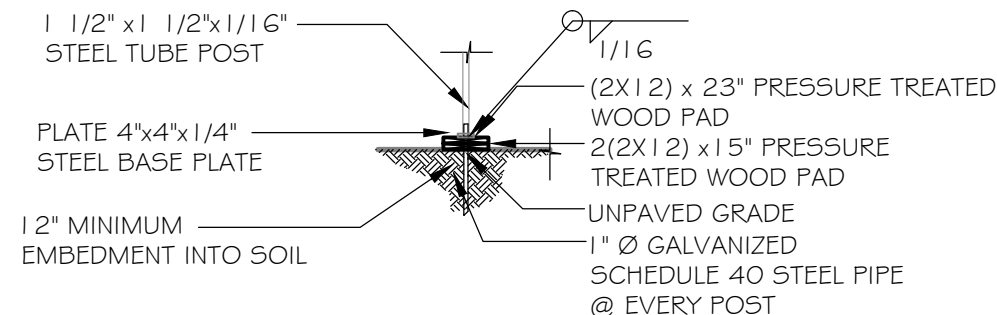
3 TYP. FOOTING DETAIL

SCALE: 1/4" = 1'-0"

NOTE:
 THE CONCRETE AND WOOD FOOTINGS SHOWN ARE FOR ILLUSTRATION ONLY AND ARE NOT PART OF THE RAMP/LANDING, STAIR/LANDING OR RAMP/STAIR/LANDING ASSEMBLY. THE PADS ARE TO BE USED AT QWNER/USER DISCRETION AND FOLLOWING THE SITE CONDITIONS REQUIREMENTS.



FOOTING AT GROUND MOUNT LANDING



4 FOOTINGS DETAIL

SCALE: 1/4" = 1'-0"