

In accordance with the City of Portland Land Use Code, Section 14-525, we are submitting the following information for your consideration, regarding the proposed addition and site improvements at the Waynflete School, 360 Spring Street, Portland, Maine. The information below directly addresses the Portland Fire Department Site Review Checklist.

- Name, address, and telephone number of applicant:**
Waynflete School, 360 Spring Street, Portland Maine, 04102. Ph. 207-683-2201.
- Name, address, and telephone number of architect:**
Scott Simons Architects, 75 York Street, Portland Maine 04101. Ph. 207-772-4656
- Proposed uses of any structures (NFPA and IBC classification):**
NFPA and IBC: Non-separated Mixed Use Occupancy (Assembly and Educational)
- Square footage of all structures:**

Additional Total	13,217 SF
a. Ground Floor:	7,390 SF
b. First Floor:	4,481 SF
c. Second Floor:	1,346 SF
Existing Total =	18,437 SF
a. Ground Floor:	4,490 SF
b. First Floor:	9,864 SF
c. Second Floor:	4,083 SF
Combined Total =	31,654 SF
a. Combined Ground Floor:	11,880 SF
b. Combined First Floor:	14,345 SF
c. Combined Second Floor:	5,429 SF
- Elevation of all structures:**
Refer to Building Elevation drawing A2.1
- Proposed fire protection of all structures:**
Automatic Fire Sprinklers throughout entire building.
- Hydrant locations:**
Refer to site plans for proximity to existing street hydrants.
- Water main size and location:**
Water main located in Storer Street. Current fire protection line installed during Phase I connects from Storer St. main into existing buildings.
- Access to fire department connections:**
Standard, wall mounted "Storz" connection per City of Portland Fire Dept. requirements.
- Access to all structures: (Min. of 2 sides)**
Proposed addition has access to Storer Street on the east and to Danforth St. on the south. Refer to site plans for layout and orientation.
- Code summary referencing NFPA and all fire department technical standards.**
Building Code Summary:
IBC 2003, 2003 NFPA 101 Life Safety Code.

Use Group: Non Separated, Mixed Use - Assembly and Educational
 Type of Construction: Type 3B, fully sprinklered.
 Stages and Platforms: To meet Section 410 requirements for fire protection, construction and sprinklers. Stage height less than 50' = proscenium wall and curtain not required to be rated. Yes, to meet NFPA 13 per section 903.3.1 per Table 503: 8.500 with 200% sprinkler increase = 17,000 SF per floor
 Max. Area allowed: Three stories allowed with sprinkler increase
 Max. Height allowed: 75 ft. with sprinkler increase. (Max. proposed height above grade = approx. 48 ft.)
 Means of Egress: Minimum of two exits per floor required.
 Dead end limit = 250 ft.
 Maximum distance to exit = 250 ft.
 Stair enclosures: One hour rating (less than 4 stories)
 Corridors: Per Table 1016.1, IBC no rating required with fully sprinklered bldg.

- Elevators shall be sized to fit an 81" x 23" stretcher and two personnel**
Variance to stretcher size requirement granted during approvals of Phase One. The existing elevator is to serve the addition - refer to building floor plans for location and size.

PARTITION SCHEDULE

[REFER TO PARTITION GENERAL NOTES ALSO]

- "A" PARTITIONS -**
6" STEEL STUDS EXTEND FROM FLOOR RUNNER TO RUNNER AT STRUCTURE ABOVE.
PROVIDE:
-ONE LAYER 1/2" PLYWOOD SUBSTRATE (SIDE LABELED "P")
-ONE LAYER 5/8" TYPE "X" BOARD ON CORRIDOR SIDE OF WALL - FULL HEIGHT TIGHT TO DECK ABOVE.
-SOUND ATTENUATION INSULATION
-ONE LAYER 5/8" TYPE "X" BOARD ON OPPOSITE SIDE OF WALL - FULL HEIGHT TIGHT TO DECK ABOVE.
ONE HOUR RATING - UL-1419
- "B" PARTITIONS -**
6" STEEL STUDS EXTEND FROM FLOOR RUNNER TO RUNNER AT STRUCTURE ABOVE.
PROVIDE:
-ONE LAYER 5/8" GWB BOTH SIDES OF WALL.
-SOUND ATTENUATION INSULATION
ADD TO ASSEMBLIES NOTED "A"
-SOUND ISOLATION CLIP W/ 7/8" STL CHANNEL. LOCATE ON SIDE MARKED "R"
ONE HOUR RATING - UL-1419
- "C" PARTITIONS -**
6" STEEL STUDS EXTEND FROM FLOOR RUNNER TO RUNNER AT STRUCTURE ABOVE.
PROVIDE:
-1/2" PLYWOOD SUBSTRATE (BOTH SIDES OF WALL)
-ONE LAYER 5/8" TYPE "X" BOARD (BOTH SIDES OF WALL) - FULL HEIGHT TIGHT TO DECK ABOVE.
-SOUND ATTENUATION INSULATION
-1" SOUND ISOLATION CLIP W/ 7/8" STL CHANNEL. LOCATE ON SIDE MARKED "R"
ONE HOUR RATING - UL-1419
- "D" PARTITIONS -**
6" STEEL STUDS EXTEND FROM FLOOR RUNNER TO RUNNER AT STRUCTURE ABOVE.
PROVIDE:
-ACOUSTIC FABRIC PANEL (AUDITORIUM SIDE OF WALL)
-ONE LAYER 5/8" TYPE "X" BOARD ONE SIDE OF WALL.
ONE HOUR RATING - UL-1419
- "E" PARTITIONS -**
6" STEEL STUDS EXTEND FROM FLOOR RUNNER TO RUNNER AT STRUCTURE ABOVE.
PROVIDE:
-1/2" PLYWOOD SUBSTRATE (BOTH SIDES OF WALL)
-ONE LAYER 5/8" HARWOOD VENEER PLYWOOD PANELING.
-SOUND ATTENUATION INSULATION.

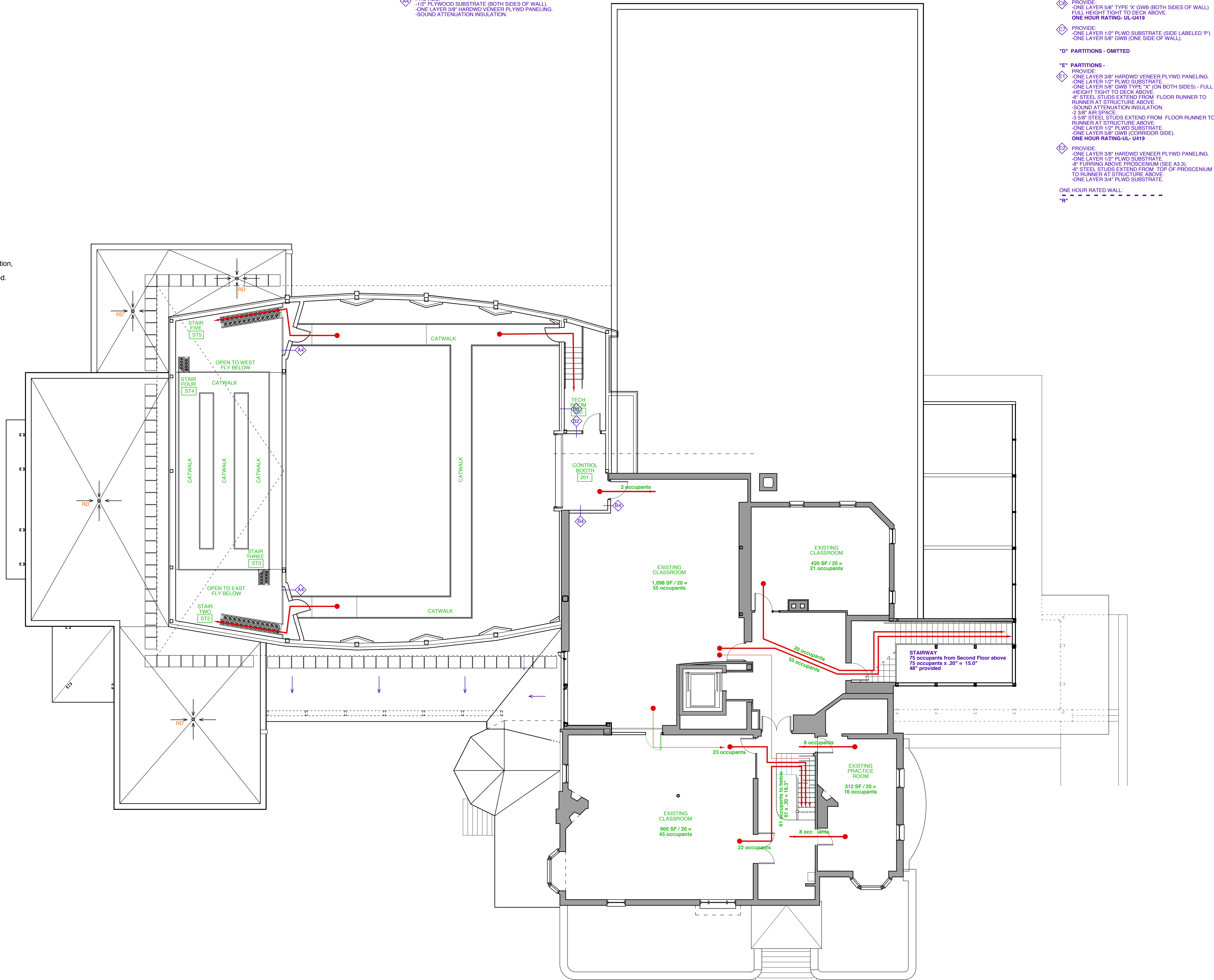
- "F" PARTITIONS -**
6" STEEL STUDS EXTEND FROM FLOOR RUNNER TO RUNNER AT STRUCTURE ABOVE.
PROVIDE:
-ONE LAYER 5/8" GWB BOTH SIDES OF WALL.
-SOUND ATTENUATION INSULATION
ADD TO ASSEMBLIES NOTED "A"
-SOUND ISOLATION CLIP W/ 7/8" STL CHANNEL. LOCATE ON SIDE MARKED "R"
ONE HOUR RATING - UL-1419
- "G" PARTITIONS -**
6" STEEL STUDS EXTEND FROM FLOOR RUNNER TO RUNNER AT STRUCTURE ABOVE.
PROVIDE:
-1/2" PLYWOOD SUBSTRATE (BOTH SIDES OF WALL)
-ONE LAYER 5/8" GWB BOTH SIDES OF WALL.
-SOUND ATTENUATION INSULATION
-1" SOUND ISOLATION CLIP W/ 7/8" STL CHANNEL. LOCATE ON SIDE MARKED "R"
ONE HOUR RATING - UL-1419
- "H" PARTITIONS -**
6" STEEL STUDS EXTEND FROM FLOOR RUNNER TO RUNNER AT STRUCTURE ABOVE.
PROVIDE:
-ACOUSTIC FABRIC PANEL (AUDITORIUM SIDE OF WALL)
-SOUND ATTENUATION INSULATION
-1/2" PLYWOOD SUBSTRATE (OTHER SIDE OF WALL)
-ONE LAYER 5/8" TYPE "X" BOARD BOTH SIDES OF WALL.
ONE HOUR RATING - UL-1419
- "I" PARTITIONS -**
6" STEEL STUDS EXTEND FROM FLOOR RUNNER TO RUNNER AT STRUCTURE ABOVE.
PROVIDE:
-ACOUSTIC FABRIC PANEL (AUDITORIUM SIDE OF WALL)
-SOUND ATTENUATION INSULATION
-1/2" PLYWOOD SUBSTRATE (OTHER SIDE OF WALL)
-ONE LAYER 5/8" TYPE "X" BOARD BOTH SIDES OF WALL.
ONE HOUR RATING - UL-1419
- "J" PARTITIONS -**
6" STEEL STUDS EXTEND FROM FLOOR RUNNER TO RUNNER AT STRUCTURE ABOVE.
PROVIDE:
-1/2" PLYWOOD SUBSTRATE (BOTH SIDES OF WALL)
-ONE LAYER 5/8" GWB (BOTH SIDES OF WALL)
-SOUND ATTENUATION INSULATION

- "K" PARTITIONS -**
6" STEEL STUDS EXTEND FROM FLOOR RUNNER TO RUNNER AT STRUCTURE ABOVE.
PROVIDE:
-1/2" PLYWOOD SUBSTRATE (BOTH SIDES OF WALL)
-ONE LAYER 5/8" GWB (BOTH SIDES OF WALL)
-SOUND ATTENUATION INSULATION
-1" SOUND ISOLATION CLIP W/ 7/8" STL CHANNEL. LOCATE ON SIDE MARKED "R"
ONE HOUR RATING - UL-1419
- "L" PARTITIONS -**
6" STEEL STUDS EXTEND FROM FLOOR RUNNER TO RUNNER AT STRUCTURE ABOVE.
PROVIDE:
-1/2" PLYWOOD SUBSTRATE (BOTH SIDES OF WALL)
-ONE LAYER 5/8" GWB (BOTH SIDES OF WALL)
-SOUND ATTENUATION INSULATION
-1" SOUND ISOLATION CLIP W/ 7/8" STL CHANNEL. LOCATE ON SIDE MARKED "R"
ONE HOUR RATING - UL-1419
- "M" PARTITIONS -**
6" STEEL STUDS EXTEND FROM FLOOR RUNNER TO RUNNER AT STRUCTURE ABOVE.
PROVIDE:
-1/2" PLYWOOD SUBSTRATE (BOTH SIDES OF WALL)
-ONE LAYER 5/8" GWB (BOTH SIDES OF WALL)
-SOUND ATTENUATION INSULATION
-1" SOUND ISOLATION CLIP W/ 7/8" STL CHANNEL. LOCATE ON SIDE MARKED "R"
ONE HOUR RATING - UL-1419
- "N" PARTITIONS -**
6" STEEL STUDS EXTEND FROM FLOOR RUNNER TO RUNNER AT STRUCTURE ABOVE.
PROVIDE:
-1/2" PLYWOOD SUBSTRATE (BOTH SIDES OF WALL)
-ONE LAYER 5/8" GWB (BOTH SIDES OF WALL)
-SOUND ATTENUATION INSULATION
-1" SOUND ISOLATION CLIP W/ 7/8" STL CHANNEL. LOCATE ON SIDE MARKED "R"
ONE HOUR RATING - UL-1419
- "O" PARTITIONS -**
6" STEEL STUDS EXTEND FROM FLOOR RUNNER TO RUNNER AT STRUCTURE ABOVE.
PROVIDE:
-1/2" PLYWOOD SUBSTRATE (BOTH SIDES OF WALL)
-ONE LAYER 5/8" GWB (BOTH SIDES OF WALL)
-SOUND ATTENUATION INSULATION
-1" SOUND ISOLATION CLIP W/ 7/8" STL CHANNEL. LOCATE ON SIDE MARKED "R"
ONE HOUR RATING - UL-1419

- "P" PARTITIONS -**
6" STEEL STUDS EXTEND FROM FLOOR RUNNER TO RUNNER AT STRUCTURE ABOVE.
PROVIDE:
-1/2" PLYWOOD SUBSTRATE (BOTH SIDES OF WALL)
-ONE LAYER 5/8" GWB (BOTH SIDES OF WALL)
-SOUND ATTENUATION INSULATION
-1" SOUND ISOLATION CLIP W/ 7/8" STL CHANNEL. LOCATE ON SIDE MARKED "R"
ONE HOUR RATING - UL-1419
- "Q" PARTITIONS -**
6" STEEL STUDS EXTEND FROM FLOOR RUNNER TO RUNNER AT STRUCTURE ABOVE.
PROVIDE:
-1/2" PLYWOOD SUBSTRATE (BOTH SIDES OF WALL)
-ONE LAYER 5/8" GWB (BOTH SIDES OF WALL)
-SOUND ATTENUATION INSULATION
-1" SOUND ISOLATION CLIP W/ 7/8" STL CHANNEL. LOCATE ON SIDE MARKED "R"
ONE HOUR RATING - UL-1419
- "R" PARTITIONS -**
6" STEEL STUDS EXTEND FROM FLOOR RUNNER TO RUNNER AT STRUCTURE ABOVE.
PROVIDE:
-1/2" PLYWOOD SUBSTRATE (BOTH SIDES OF WALL)
-ONE LAYER 5/8" GWB (BOTH SIDES OF WALL)
-SOUND ATTENUATION INSULATION
-1" SOUND ISOLATION CLIP W/ 7/8" STL CHANNEL. LOCATE ON SIDE MARKED "R"
ONE HOUR RATING - UL-1419
- "S" PARTITIONS -**
6" STEEL STUDS EXTEND FROM FLOOR RUNNER TO RUNNER AT STRUCTURE ABOVE.
PROVIDE:
-1/2" PLYWOOD SUBSTRATE (BOTH SIDES OF WALL)
-ONE LAYER 5/8" GWB (BOTH SIDES OF WALL)
-SOUND ATTENUATION INSULATION
-1" SOUND ISOLATION CLIP W/ 7/8" STL CHANNEL. LOCATE ON SIDE MARKED "R"
ONE HOUR RATING - UL-1419
- "T" PARTITIONS -**
6" STEEL STUDS EXTEND FROM FLOOR RUNNER TO RUNNER AT STRUCTURE ABOVE.
PROVIDE:
-1/2" PLYWOOD SUBSTRATE (BOTH SIDES OF WALL)
-ONE LAYER 5/8" GWB (BOTH SIDES OF WALL)
-SOUND ATTENUATION INSULATION
-1" SOUND ISOLATION CLIP W/ 7/8" STL CHANNEL. LOCATE ON SIDE MARKED "R"
ONE HOUR RATING - UL-1419

- "U" PARTITIONS -**
6" STEEL STUDS EXTEND FROM FLOOR RUNNER TO RUNNER AT STRUCTURE ABOVE.
PROVIDE:
-1/2" PLYWOOD SUBSTRATE (BOTH SIDES OF WALL)
-ONE LAYER 5/8" GWB (BOTH SIDES OF WALL)
-SOUND ATTENUATION INSULATION
-1" SOUND ISOLATION CLIP W/ 7/8" STL CHANNEL. LOCATE ON SIDE MARKED "R"
ONE HOUR RATING - UL-1419
- "V" PARTITIONS -**
6" STEEL STUDS EXTEND FROM FLOOR RUNNER TO RUNNER AT STRUCTURE ABOVE.
PROVIDE:
-1/2" PLYWOOD SUBSTRATE (BOTH SIDES OF WALL)
-ONE LAYER 5/8" GWB (BOTH SIDES OF WALL)
-SOUND ATTENUATION INSULATION
-1" SOUND ISOLATION CLIP W/ 7/8" STL CHANNEL. LOCATE ON SIDE MARKED "R"
ONE HOUR RATING - UL-1419
- "W" PARTITIONS -**
6" STEEL STUDS EXTEND FROM FLOOR RUNNER TO RUNNER AT STRUCTURE ABOVE.
PROVIDE:
-1/2" PLYWOOD SUBSTRATE (BOTH SIDES OF WALL)
-ONE LAYER 5/8" GWB (BOTH SIDES OF WALL)
-SOUND ATTENUATION INSULATION
-1" SOUND ISOLATION CLIP W/ 7/8" STL CHANNEL. LOCATE ON SIDE MARKED "R"
ONE HOUR RATING - UL-1419
- "X" PARTITIONS -**
6" STEEL STUDS EXTEND FROM FLOOR RUNNER TO RUNNER AT STRUCTURE ABOVE.
PROVIDE:
-1/2" PLYWOOD SUBSTRATE (BOTH SIDES OF WALL)
-ONE LAYER 5/8" GWB (BOTH SIDES OF WALL)
-SOUND ATTENUATION INSULATION
-1" SOUND ISOLATION CLIP W/ 7/8" STL CHANNEL. LOCATE ON SIDE MARKED "R"
ONE HOUR RATING - UL-1419
- "Y" PARTITIONS -**
6" STEEL STUDS EXTEND FROM FLOOR RUNNER TO RUNNER AT STRUCTURE ABOVE.
PROVIDE:
-1/2" PLYWOOD SUBSTRATE (BOTH SIDES OF WALL)
-ONE LAYER 5/8" GWB (BOTH SIDES OF WALL)
-SOUND ATTENUATION INSULATION
-1" SOUND ISOLATION CLIP W/ 7/8" STL CHANNEL. LOCATE ON SIDE MARKED "R"
ONE HOUR RATING - UL-1419

- "Z" PARTITIONS -**
6" STEEL STUDS EXTEND FROM FLOOR RUNNER TO RUNNER AT STRUCTURE ABOVE.
PROVIDE:
-1/2" PLYWOOD SUBSTRATE (BOTH SIDES OF WALL)
-ONE LAYER 5/8" GWB (BOTH SIDES OF WALL)
-SOUND ATTENUATION INSULATION
-1" SOUND ISOLATION CLIP W/ 7/8" STL CHANNEL. LOCATE ON SIDE MARKED "R"
ONE HOUR RATING - UL-1419
- "AA" PARTITIONS -**
6" STEEL STUDS EXTEND FROM FLOOR RUNNER TO RUNNER AT STRUCTURE ABOVE.
PROVIDE:
-1/2" PLYWOOD SUBSTRATE (BOTH SIDES OF WALL)
-ONE LAYER 5/8" GWB (BOTH SIDES OF WALL)
-SOUND ATTENUATION INSULATION
-1" SOUND ISOLATION CLIP W/ 7/8" STL CHANNEL. LOCATE ON SIDE MARKED "R"
ONE HOUR RATING - UL-1419
- "AB" PARTITIONS -**
6" STEEL STUDS EXTEND FROM FLOOR RUNNER TO RUNNER AT STRUCTURE ABOVE.
PROVIDE:
-1/2" PLYWOOD SUBSTRATE (BOTH SIDES OF WALL)
-ONE LAYER 5/8" GWB (BOTH SIDES OF WALL)
-SOUND ATTENUATION INSULATION
-1" SOUND ISOLATION CLIP W/ 7/8" STL CHANNEL. LOCATE ON SIDE MARKED "R"
ONE HOUR RATING - UL-1419
- "AC" PARTITIONS -**
6" STEEL STUDS EXTEND FROM FLOOR RUNNER TO RUNNER AT STRUCTURE ABOVE.
PROVIDE:
-1/2" PLYWOOD SUBSTRATE (BOTH SIDES OF WALL)
-ONE LAYER 5/8" GWB (BOTH SIDES OF WALL)
-SOUND ATTENUATION INSULATION
-1" SOUND ISOLATION CLIP W/ 7/8" STL CHANNEL. LOCATE ON SIDE MARKED "R"
ONE HOUR RATING - UL-1419
- "AD" PARTITIONS -**
6" STEEL STUDS EXTEND FROM FLOOR RUNNER TO RUNNER AT STRUCTURE ABOVE.
PROVIDE:
-1/2" PLYWOOD SUBSTRATE (BOTH SIDES OF WALL)
-ONE LAYER 5/8" GWB (BOTH SIDES OF WALL)
-SOUND ATTENUATION INSULATION
-1" SOUND ISOLATION CLIP W/ 7/8" STL CHANNEL. LOCATE ON SIDE MARKED "R"
ONE HOUR RATING - UL-1419



1 UPPER FLOOR PLAN
SCALE: 1/8" = 1'-0"



SSA
Scott Simons Architects
75 York Street
Portland, Maine 04101
phone 207 772 4656
fax 207 828 4656

THIS DRAWING IS THE PROPERTY OF
SCOTT SIMONS ARCHITECTS
AND IS NOT TO BE COPIED OR
REPRODUCED IN PART OR WHOLE.

PROJECT
**WAYNFLETE ARTS CENTER
PHASE TWO**

**ADDITION/ RENOVATION
360 SPRING STREET
PORTLAND, ME**

TITLE
**SECOND FLOOR
LIFE SAFETY PLAN**

STATUS:
LIFE SAFETY DIAGRAMS

DATE:
11.27.2007

REVISION /DATE:
△

PROJECT NO.
2003-0040.00

DRAWN BY:
2007© Scott Simons Architects

DWG NO.
LS-1.3