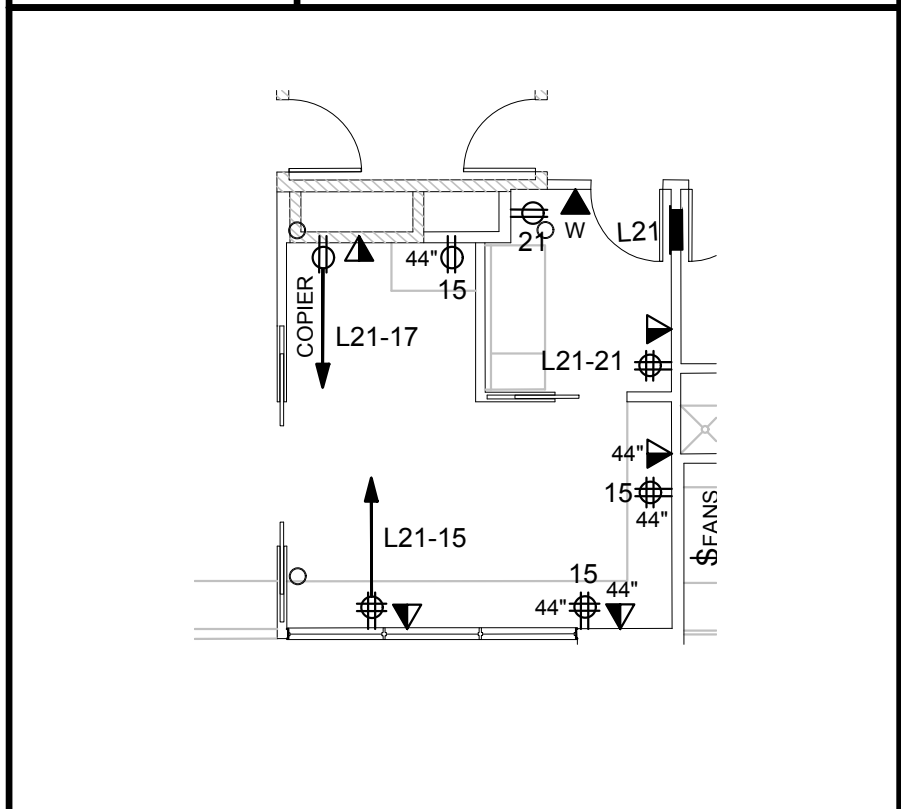
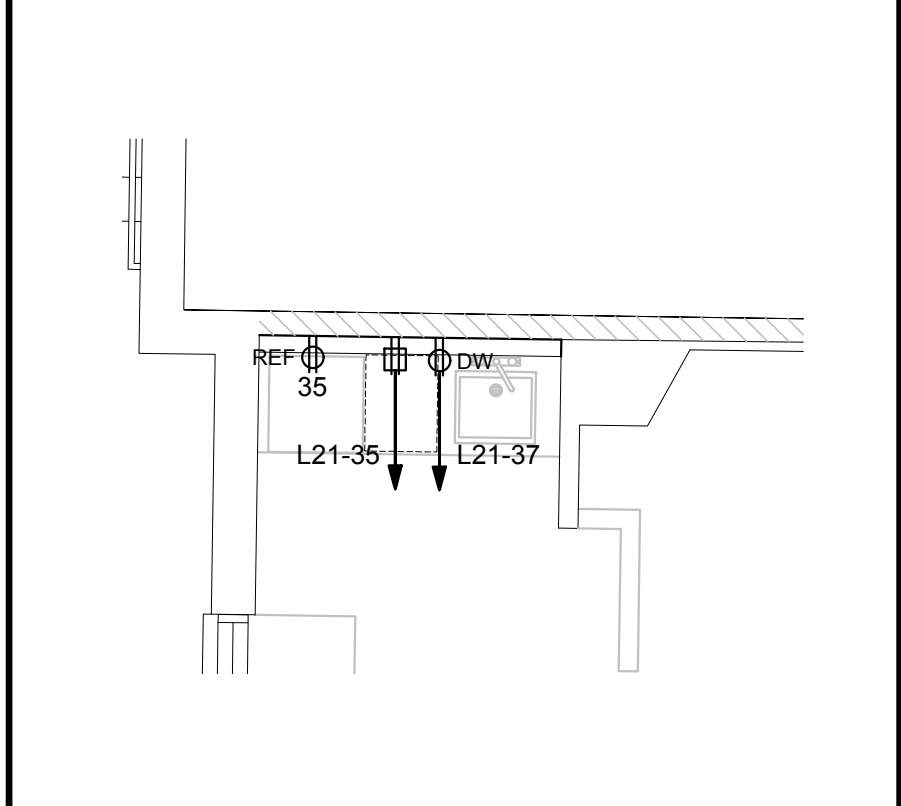


- 1 UNDER BASE BID, PROVIDE JUNCTION BOX WITH BLANK COVER FOR FUTURE PADDLE FAN AND CONTROL, AND CIRCUIT JUNCTION BOXES AS INDICATED VIA CONTROL BOX. UNDER ALTERNATE #4, INSTALL AND WIRE PADDLE FAN AND CONTROLLER FURNISHED BY DIVISION 10.
- 2 PROVIDE POWER FOR DOOR OPERATOR. COORDINATE WITH OTHER DIVISIONS.
- 3 PROVIDE BLANK COVER PLATE FOR FUTURE CARD READER.
- 4 PROVIDE JUNCTION BOX WITH CIRCUIT ABOVE CEILING FOR BTU METER
- 5 PROVIDE JUNCTION BOX WITH CIRCUIT ABOVE CEILING FOR MECHANICAL CONTROL.

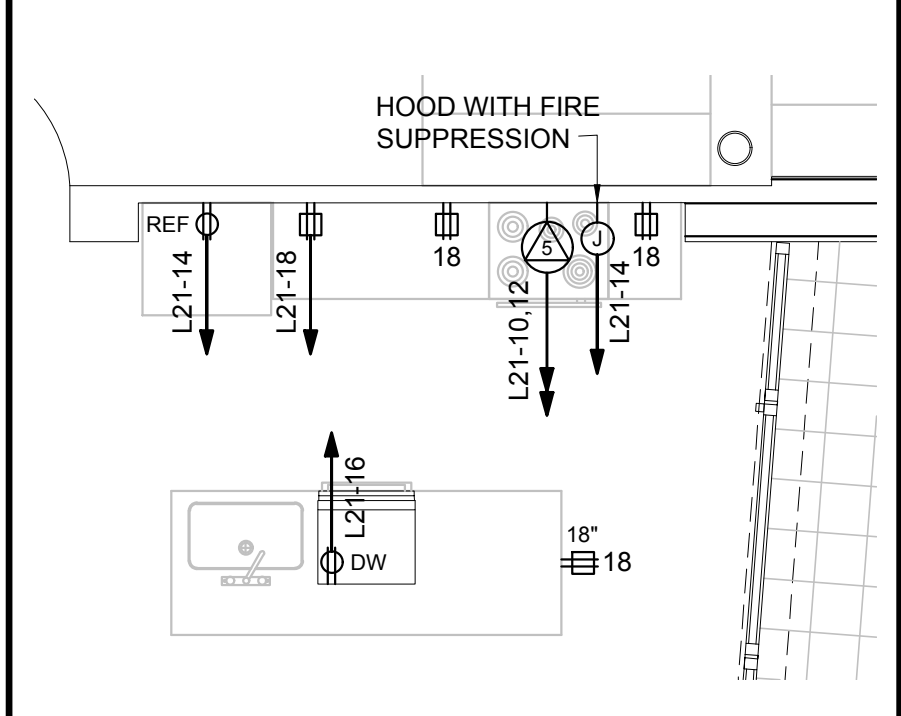
E9 KEY NOTES



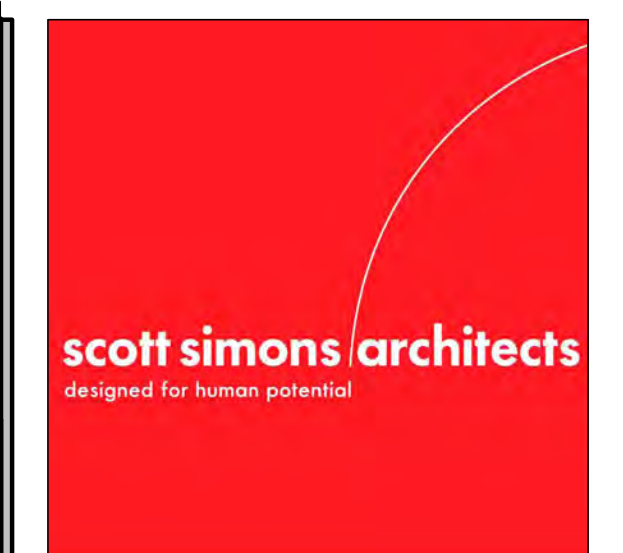
D9 KEY NOTES



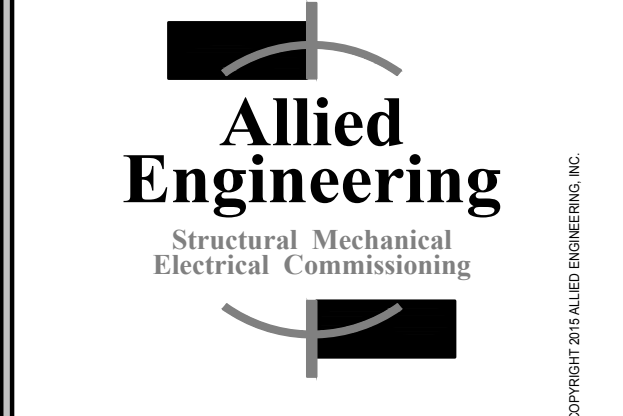
B9 116 KITCHENETTE



A9 111 KITCHENETTE



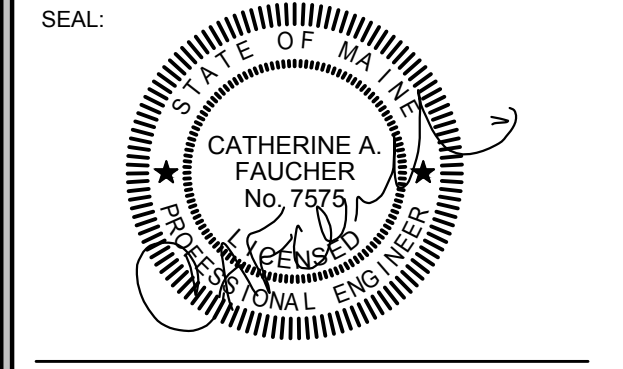
75 York Street,
Portland, Maine 04101
simonsarchitects.com
207.772.4656



160 Veranda Street
Portland, Maine 04103
T: 207.221.2260
F: 207.221.2266
Web: www.allied-eng.com

Allied Project No: 15051
Cad File: 15051E.dwg

PROJECT NAME:
WAYNFLETE LOWER SCHOOL
ADDITION & RENOVATIONS
WAYNFLETE SCHOOL
360 SPRING STREET
PORTLAND, MAINE 04102



THIS DRAWING IS THE PROPERTY OF SCOTT SIMONS ARCHITECTS (SSA) AND IS NOT TO BE COPIED OR REPRODUCED IN PART OR WHOLE. © 2015 © SCOTT SIMONS ARCHITECTS, LLC

REVISION:
ADDENDUM #4 (POST BID) 03/31/17

1	DATE
2	DATE
3	DATE
4	DATE
5	DATE
6	DATE

DATE OF ISSUE: 12 JANUARY 2017
PROJECT NUMBER: 2013-0050
STATUS: ISSUED FOR BID

POWER AND SYSTEMS PLAN
MAIN LEVEL

EP102R

N:\Projects\2015\15051\Waynflete School\00 Drawing Files\15051_EP.dwg Mar 31, 2017 2:46pm