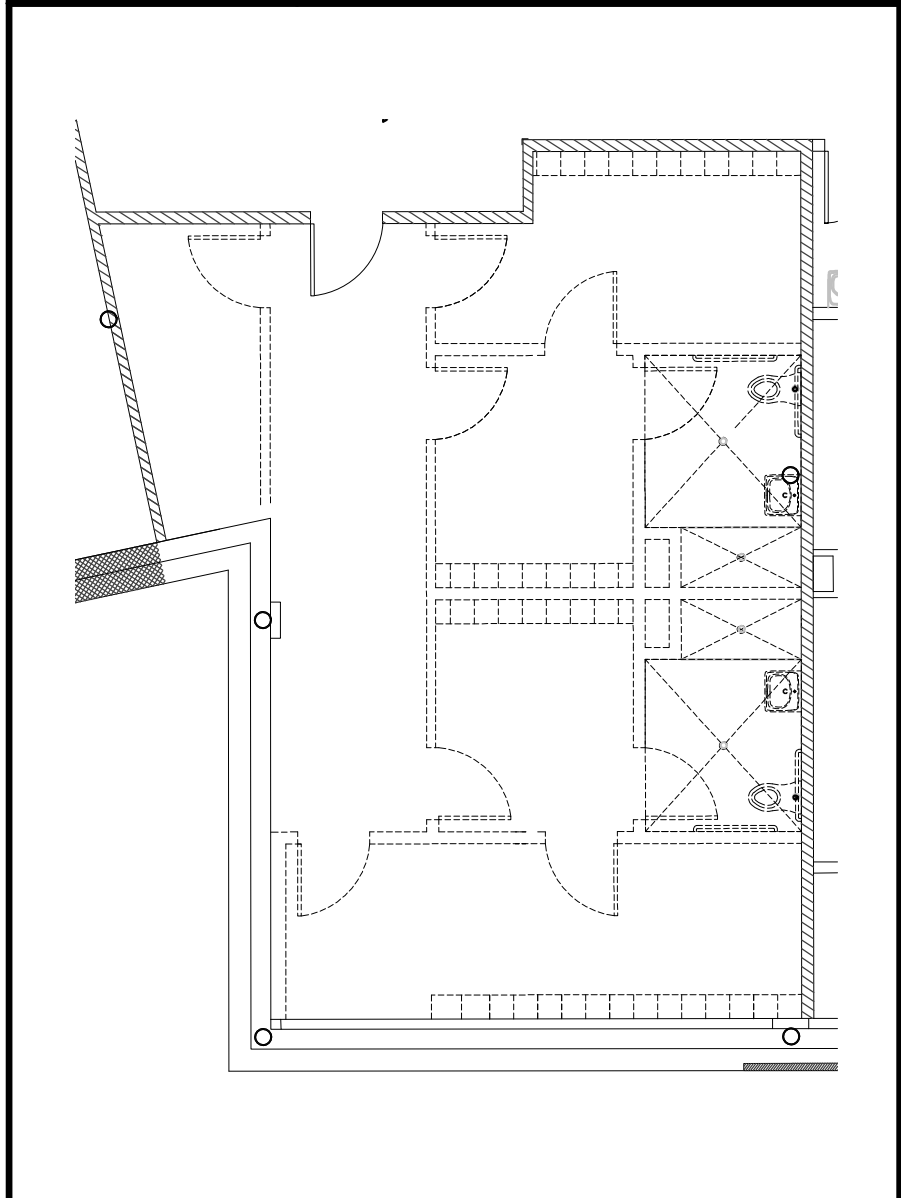


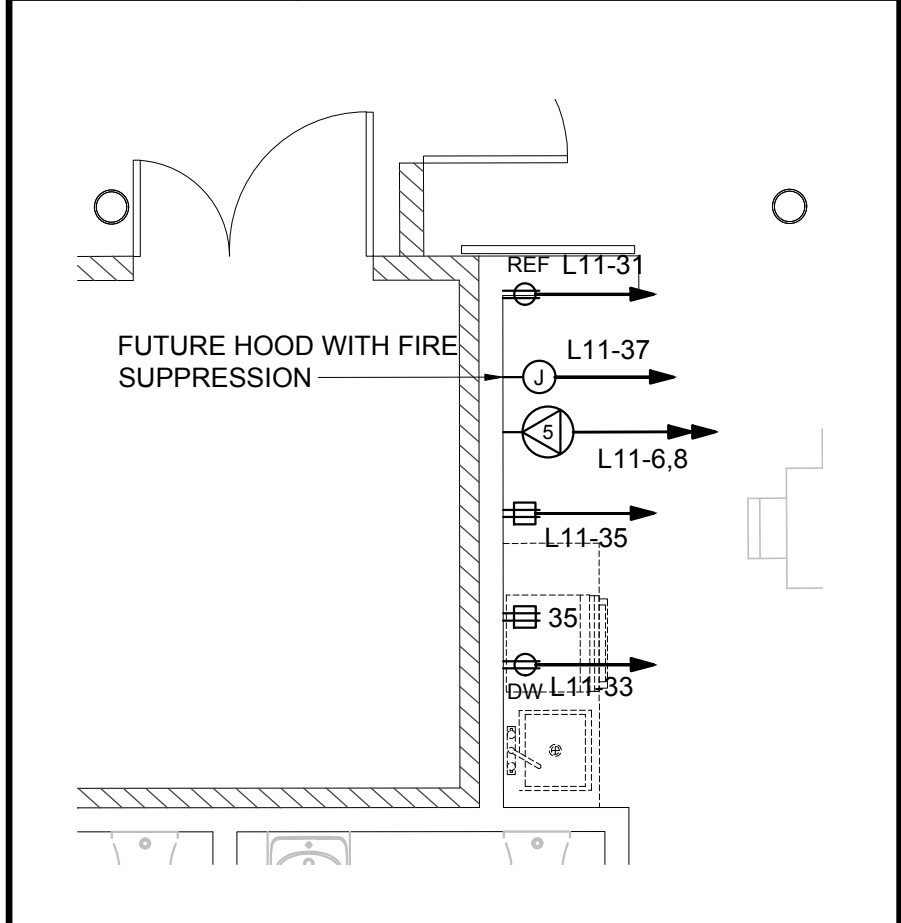


- 1 PROVIDE JUNCTION BOX WITH CIRCUIT ABOVE CEILING FOR MECHANICAL CONTROL.
- 2 CIRCUIT TO SPARE 20A, 1P CIRCUIT BREAKER IN PANEL L12.

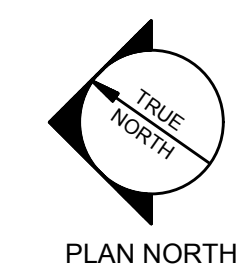
D9 KEY NOTES



B9 FUTURE FIT-OUT
1/8" = 1'-0"



A9 017A KITCHENETTE
1/4" = 1'-0"

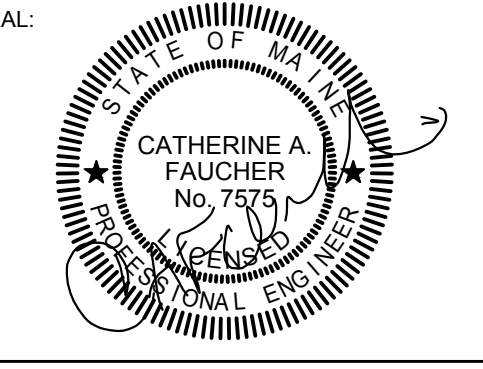


C:\Users\Gcharlier\cod_autosaves\Autosaves\7608\15051_EP.dwg Mar 31, 2017 - 10:59am

A1 POWER AND SYSTEMS PLAN ~ LOWER LEVEL
1/8" = 1'-0"

PROJECT NAME:
WAYNFLETE LOWER SCHOOL
ADDITION & RENOVATIONS

WAYNFLETE SCHOOL
360 SPRING STREET
PORTLAND, MAINE 04102



THIS DRAWING IS THE PROPERTY OF SCOTT SIMONS ARCHITECTS (SSA) AND IS NOT TO BE COPIED OR REPRODUCED IN PART OR WHOLE.
2015 © SCOTT SIMONS ARCHITECTS, LLC

REVISION:	DATE
ADDENDUM #2	02/09/17
ADDENDUM #4 [POST BID]	03/31/17
2	DATE
3	DATE
4	DATE
5	DATE
6	DATE
DATE OF ISSUE:	12 JANUARY 2017
PROJECT NUMBER:	2013-0050
STATUS:	ISSUED FOR BID

POWER AND SYSTEMS PLAN
LOWER LEVEL

EP101R