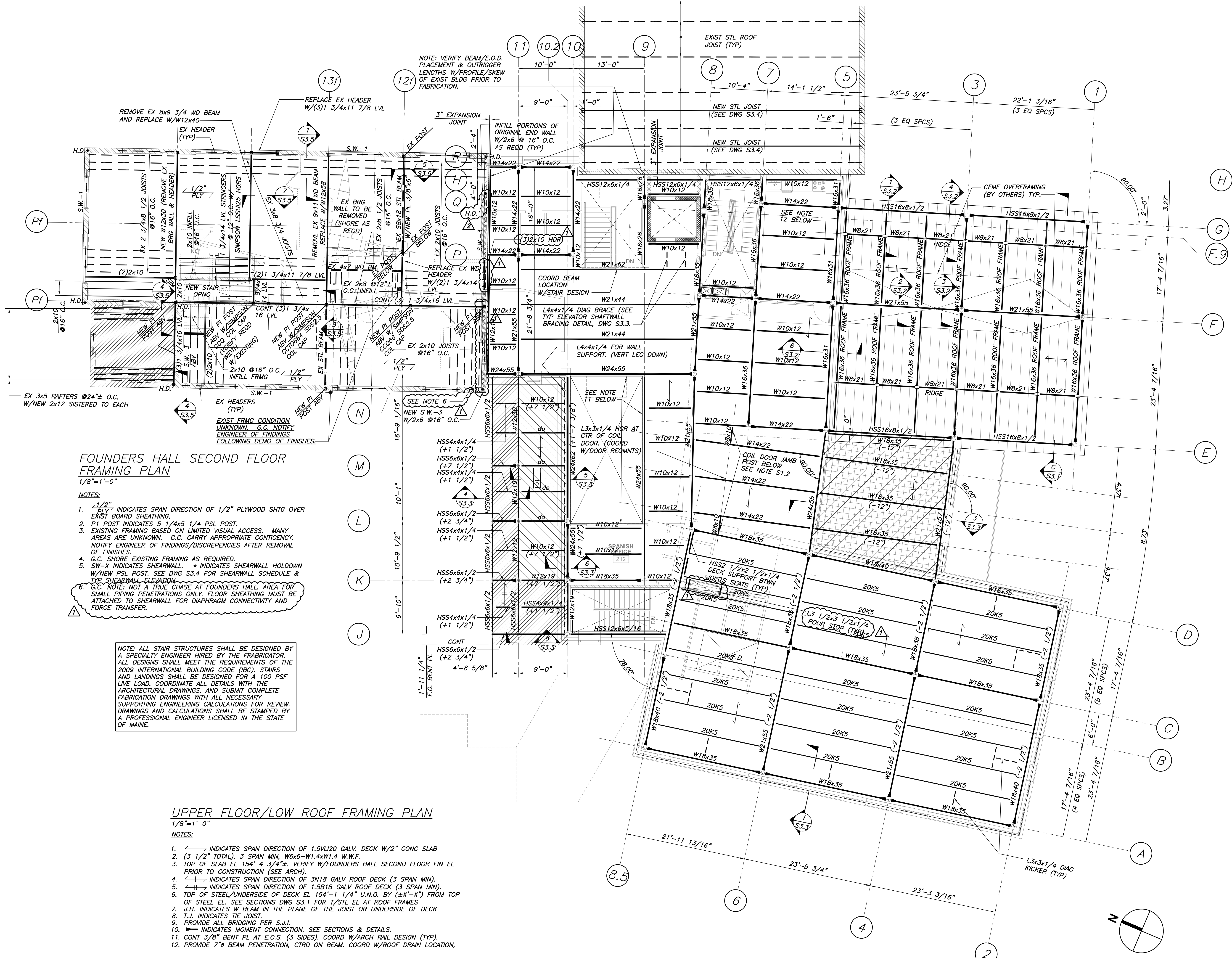


THIS DRAWING IS THE PROPERTY OF SCOTT SIMONS ARCHITECTS (SSA) AND IS NOT TO BE COPIED OR REPRODUCED IN PART OR WHOLE
© 2012 © SCOTT SIMONS ARCHITECTS, LLC

REVISION:

1	ADDENDUM 1 - GENERAL REVISIONS	01-30-2017
2	ADDENDUM 2 - GENERAL REVISIONS	02-06-2017

DATE OF ISSUE: 12 JANUARY 2017
PROJECT NUMBER: 3660
STATUS: ISSUED FOR BID



**FOUNDERS HALL SECOND FLOOR
FRAMING PLAN**
1/8"=1'-0"

- NOTES:
1. $\frac{1}{2}$ " INDICATES SPAN DIRECTION OF 1/2" PLYWOOD SHTG OVER EXIST BOARD SHEATHING.
 2. P1 POST INDICATES 5 1/4x5 1/4 PSL POST.
 3. EXISTING FRAMING BASED ON LIMITED VISUAL ACCESS. MANY AREAS ARE UNKNOWN. G.C. CARRY APPROPRIATE CONTINGENCY. NOTIFY ENGINEER OF FINDINGS/DISCREPANCIES AFTER REMOVAL OF FINISHES.
 4. G.C. SHORE EXISTING FRAMING AS REQUIRED.
 5. SW-X INDICATES SHEARWALL. * INDICATES SHEARWALL HOLDOWN W/NEW PSL POST. SEE DWG S3.4 FOR SHEARWALL SCHEDULE & TYP SHEARWALL ELEVATION.
 6. G.C. NOTE: NOT A TRUE CHASE AT FOUNDERS HALL AREA FOR SMALL PIPING PENETRATIONS ONLY. FLOOR SHEATHING MUST BE ATTACHED TO SHEARWALL FOR DIAPHRAGM CONNECTIVITY AND FORCE TRANSFER.

NOTE: ALL STAIR STRUCTURES SHALL BE DESIGNED BY A SPECIALTY ENGINEER HIRED BY THE FABRICATOR. ALL DESIGNS SHALL MEET THE REQUIREMENTS OF THE 2009 INTERNATIONAL BUILDING CODE (IBC). STAIRS AND LANDINGS SHALL BE DESIGNED FOR A 100 PSF LIVE LOAD. COORDINATE ALL DETAILS WITH THE ARCHITECTURAL DRAWINGS, AND SUBMIT COMPLETE FABRICATION DRAWINGS WITH ALL NECESSARY SUPPORTING ENGINEERING CALCULATIONS FOR REVIEW. DRAWINGS AND CALCULATIONS SHALL BE STAMPED BY A PROFESSIONAL ENGINEER LICENSED IN THE STATE OF MAINE.

UPPER FLOOR/LOW ROOF FRAMING PLAN
1/8"=1'-0"

- NOTES:
1. \leftarrow INDICATES SPAN DIRECTION OF 1.5VL120 GALV. DECK W/2" CONC SLAB (3 1/2" TOTAL), 3 SPAN MIN, W6x6-W1.4xW1.4 W.W.F.
 2. \leftarrow INDICATES SPAN DIRECTION OF 3N18 GALV ROOF DECK (3 SPAN MIN).
 3. \leftarrow INDICATES SPAN DIRECTION OF 1.5B18 GALV ROOF DECK (3 SPAN MIN).
 4. TOP OF SLAB EL 154' 4 3/4"±. VERIFY W/FOUNDERS HALL SECOND FLOOR FIN EL PRIOR TO CONSTRUCTION (SEE ARCH).
 5. TOP OF STEEL UNDERSIDE OF DECK EL 154'-1 1/4" U.N.O. BY (±X"-X") FROM TOP OF STEEL EL. SEE SECTIONS DWG S3.1 FOR T/STL EL AT ROOF FRAMES.
 6. J.H. INDICATES W BEAM IN THE PLANE OF THE JOIST OR UNDERSIDE OF DECK.
 7. T.J. INDICATES TIE JOIST.
 8. PROVIDE ALL BRIDGING PER S.J.I.
 9. \blacktriangleright INDICATES MOMENT CONNECTION. SEE SECTIONS & DETAILS.
 10. CONT 3/8" BENT PL AT E.O.S. (3 SIDES). COORD W/ARCH RAIL DESIGN (TYP).
 12. PROVIDE 7# BEAM PENETRATION, CTDR ON BEAM. COORD W/ROOF DRAIN LOCATION.