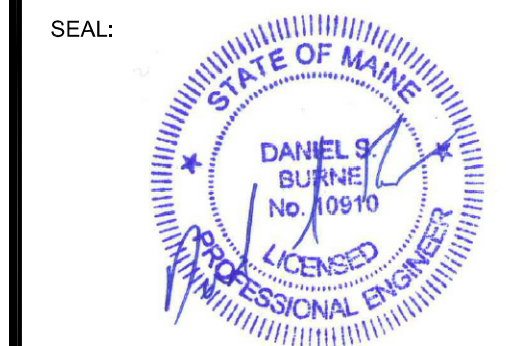


PROJECT NAME:
**WAYNFLEET
LOWER SCHOOL
ADDITION & RENOVATIONS**

WAYNFLEET SCHOOL
360 SPRING STREET
PORTLAND, MAINE 04102



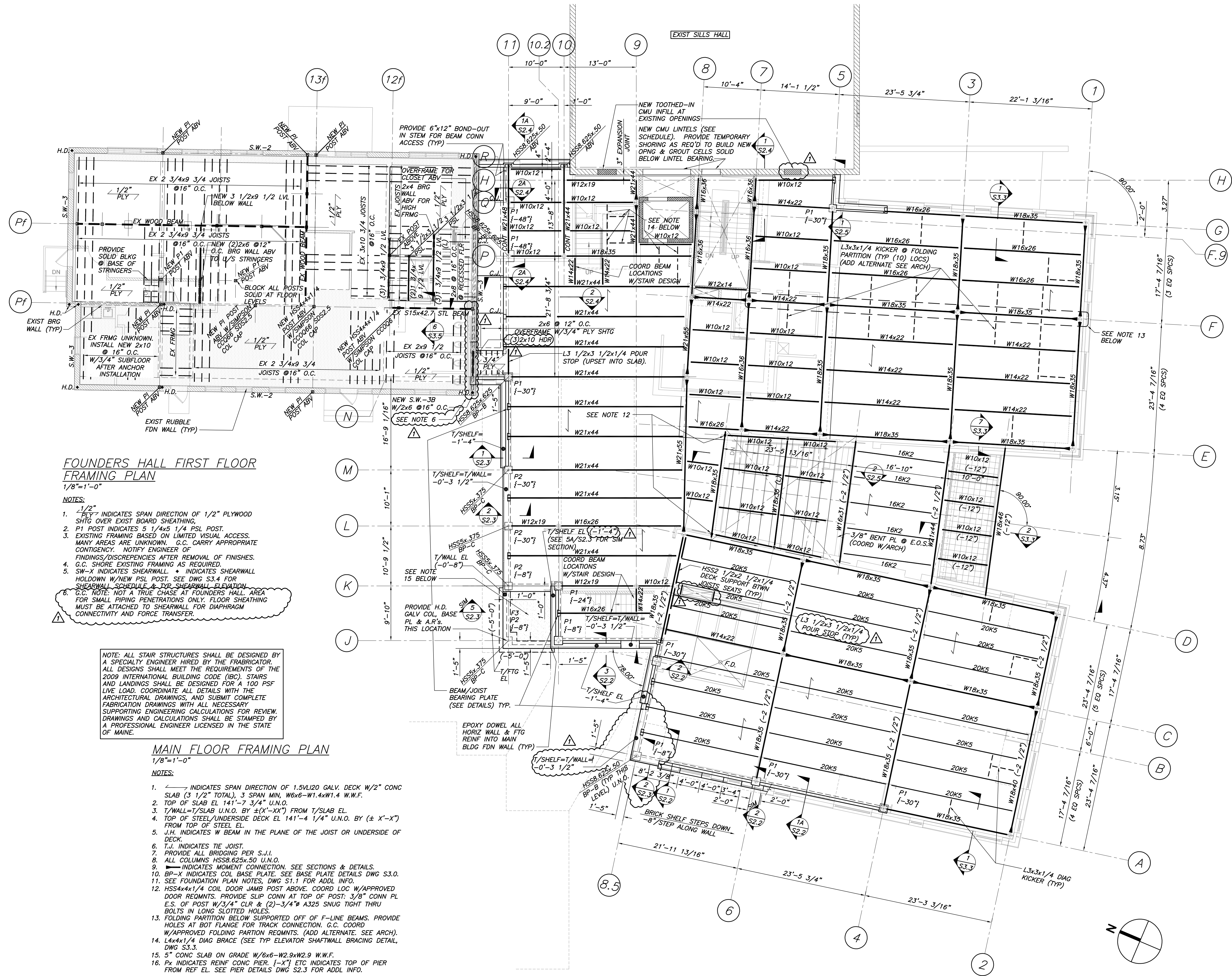
THIS DRAWING IS THE PROPERTY OF SCOTT SIMONS ARCHITECTS (SSA) AND IS NOT TO BE COPIED OR REPRODUCED IN PART OR WHOLE
2012 © SCOTT SIMONS ARCHITECTS, LLC

REVISION:
1 ADDENDUM 1 - GENERAL REVISIONS 01-30-2017

DATE OF ISSUE: 12 JANUARY 2017
PROJECT NUMBER: 3660
STATUS: ISSUED FOR BID

**LOWER SCHOOL
MAIN FLOOR
FRAMING PLAN**

S1.2R



**FOUNDERS HALL FIRST FLOOR
FRAMING PLAN**
1/8"=1'-0"

- NOTES:
1. $\frac{1}{2}$ " INDICATES SPAN DIRECTION OF 1/2" PLYWOOD SHTG OVER EXIST BOARD SHEATHING.
 2. P1 POST INDICATES 5 1/4x5 1/4 PSL POST.
 3. EXISTING FRAMING BASED ON LIMITED VISUAL ACCESS. MANY AREAS ARE UNKNOWN. G.C. CARRY APPROPRIATE CONTINGENCY. NOTIFY ENGINEER OF FINDINGS/DISCREPANCIES AFTER REMOVAL OF FINISHES.
 4. G.C. SHORE EXISTING FRAMING AS REQUIRED.
 5. SW-X INDICATES SHEARWALL. * INDICATES SHEARWALL HOLDOWN W/NEW PSL POST. SEE DWG S3.4 FOR SHEARWALL SCHEDULE & TYP. SHEARWALL ELEVATION.
 6. G.C. NOTE: NOT A TRUE CHASE AT FOUNDERS HALL. AREA FOR SMALL PIPING PENETRATIONS ONLY. FLOOR SHEATHING MUST BE ATTACHED TO SHEARWALL FOR DIAPHRAGM CONNECTIVITY AND FORCE TRANSFER.

NOTE: ALL STAIR STRUCTURES SHALL BE DESIGNED BY A SPECIALTY ENGINEER HIRED BY THE FABRICATOR. ALL DESIGNS SHALL MEET THE REQUIREMENTS OF THE 2009 INTERNATIONAL BUILDING CODE (IBC). STAIRS AND LANDINGS SHALL BE DESIGNED FOR A 100 PSF LIVE LOAD. COORDINATE ALL DETAILS WITH THE ARCHITECTURAL DRAWINGS, AND SUBMIT COMPLETE FABRICATION DRAWINGS WITH ALL NECESSARY SUPPORTING ENGINEERING CALCULATIONS FOR REVIEW. DRAWINGS AND CALCULATIONS SHALL BE STAMPED BY A PROFESSIONAL ENGINEER LICENSED IN THE STATE OF MAINE.

MAIN FLOOR FRAMING PLAN
1/8"=1'-0"

- NOTES:
1. $\frac{1}{2}$ " INDICATES SPAN DIRECTION OF 1.5VL20 GALV. DECK W/2" CONC SLAB (3 1/2" TOTAL), 3 SPAN MIN, W6x6-W14xW1.4 W.W.F.
 2. TOP OF SLAB EL 141'-7 3/4" U.N.O.
 3. T/WALL=T/SLAB U.N.O. BY ±(X'-XX") FROM T/SLAB EL.
 4. TOP OF STEEL/UNDERSIDE DECK EL 141'-4 1/4" U.N.O. BY (± X'-X") FROM TOP OF STEEL EL.
 5. J.H. INDICATES W BEAM IN THE PLANE OF THE JOIST OR UNDERSIDE OF DECK.
 6. T.J. INDICATES TIE JOIST.
 7. PROVIDE ALL BRIDGING PER S.J.I.
 8. ALL COLUMNS HSSB.625x.50 U.N.O.
 9. \blacksquare INDICATES MOMENT CONNECTION. SEE SECTIONS & DETAILS.
 10. BP-X INDICATES COL. BASE PLATE. SEE BASE PLATE DETAILS DWG S3.0.
 11. SEE FOUNDATION PLAN NOTES, DWG S1.1 FOR ADDL INFO.
 12. HSS4x4x1/4 COIL DOOR JAMB POST ABOVE. COORD LOC W/APPROVED DOOR REQMENTS. PROVIDE SLIP CONN AT TOP OF POST. 3/8" CONN PL E.S. OF POST W/3/4" CLR & (2)-3/4" A325 SNUG TIGHT THRU BOLTS IN LONG SLOTTED HOLES.
 13. FOLDING PARTITION BELOW SUPPORTED OFF OF F-LINE BEAMS. PROVIDE HOLES AT BOT FLANGE FOR TRACK CONNECTION. G.C. COORD W/APPROVED FOLDING PARTITION REQMENTS. (ADD ALTERNATE. SEE ARCH).
 14. L4x4x1/4 DIAG BRACE (SEE TYP ELEVATOR SHAFTWALL BRACING DETAIL, DWG S3.3).
 15. 5" CONC SLAB ON GRADE W/6x6-W2.9xW2.9 W.W.F.
 16. Px INDICATES REINF CONC PIER. {-X"} ETC INDICATES TOP OF PIER FROM REF EL. SEE PIER DETAILS DWG S2.3 FOR ADDL INFO.