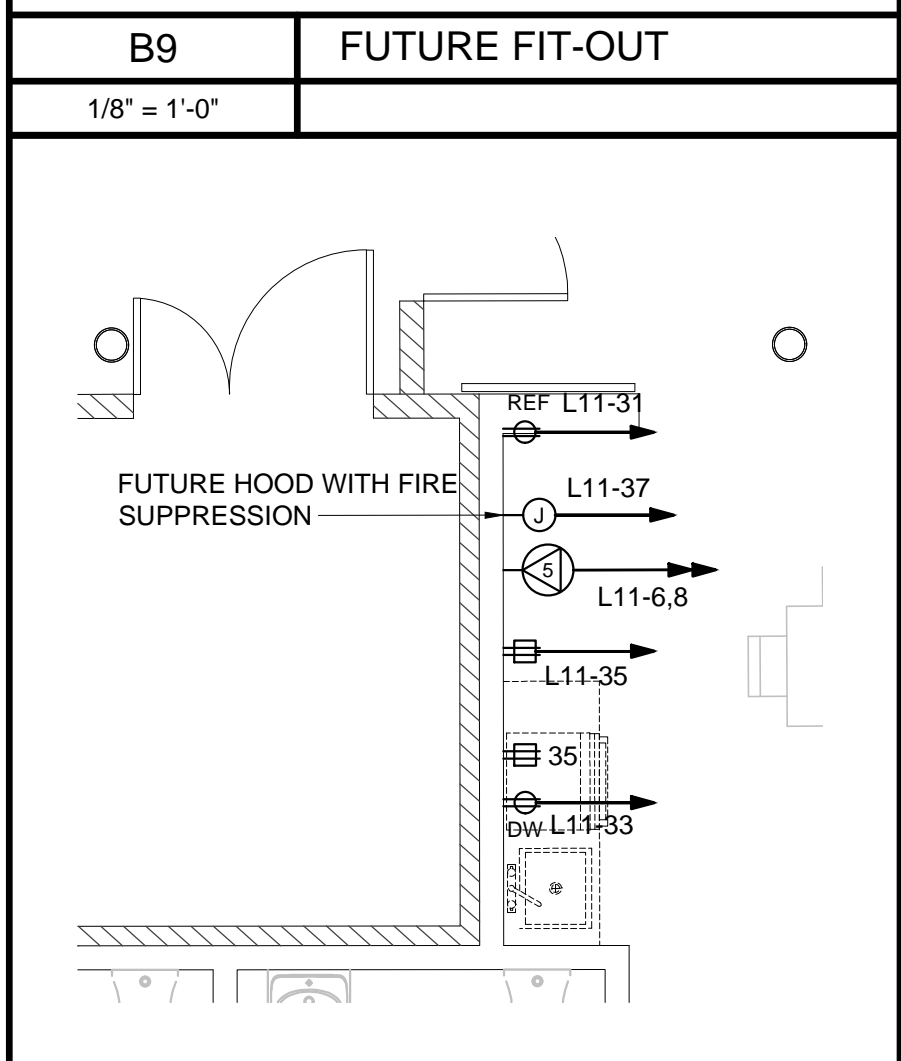
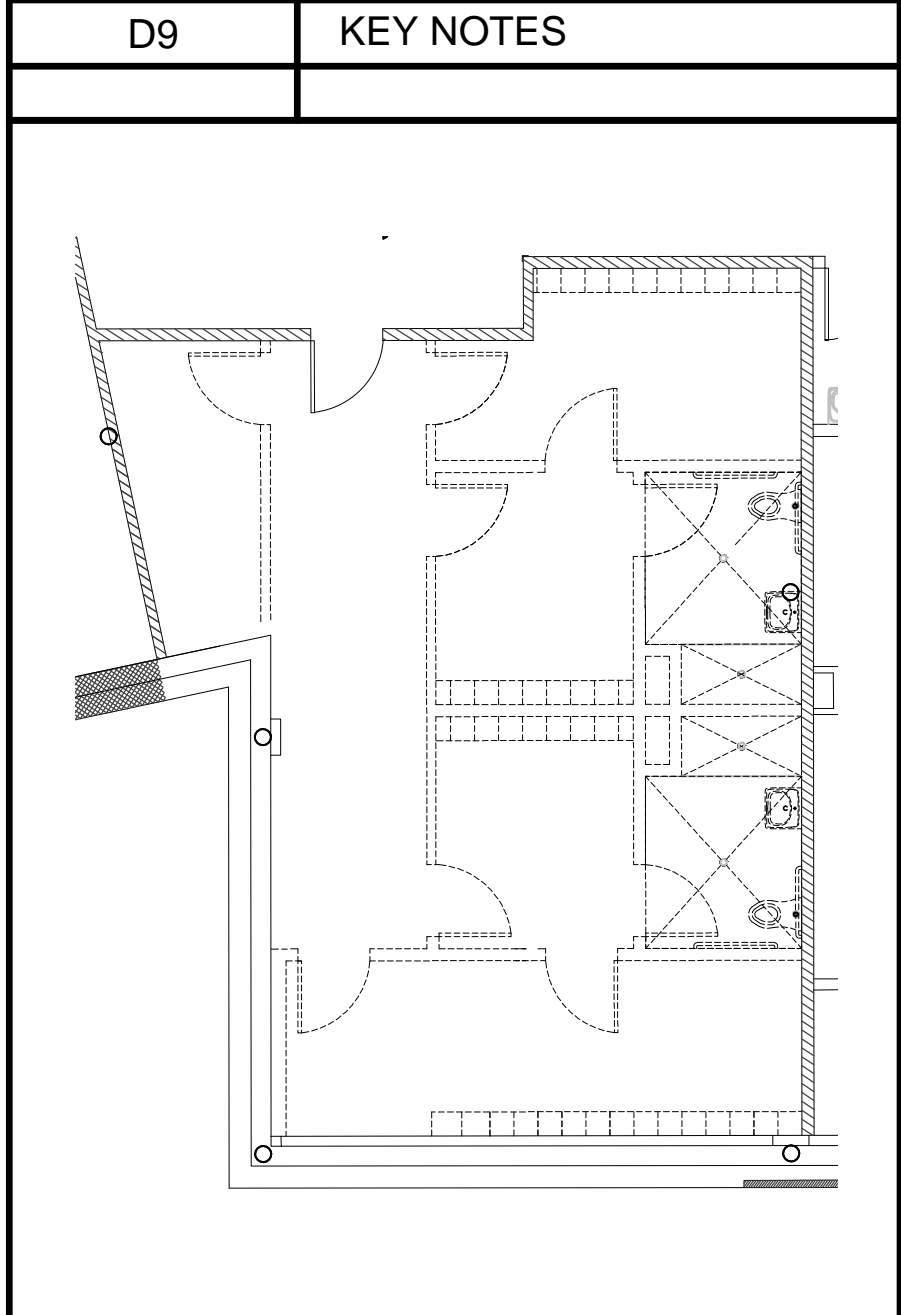
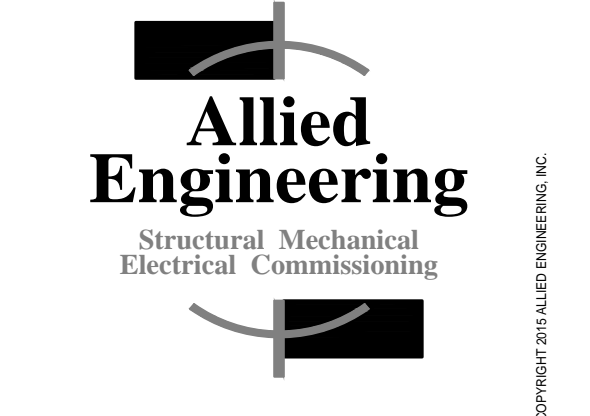


- KEY NOTES**
- 1 PROVIDE JUNCTION BOX WITH CIRCUIT ABOVE CEILING FOR MECHANICAL CONTROL.
 - 2 CIRCUIT TO SPARE 20A, 1P CIRCUIT BREAKER IN PANEL L12.



75 York Street,
Portland, Maine 04101
simonsarchitects.com
207.772.4656

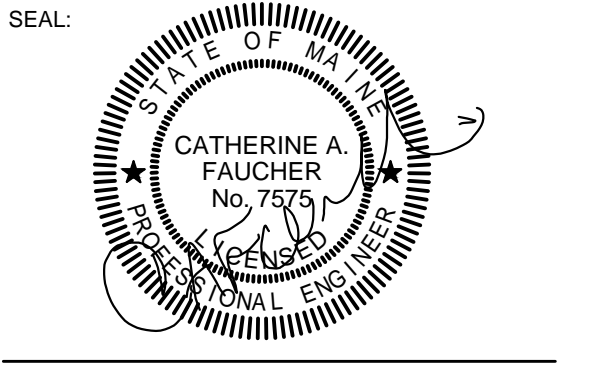


160 Veranda Street
Portland, Maine 04103
T: 207.221.2260
F: 207.221.2266
Web: www.allied-eng.com

Allied Project No: 15051
Cad File: 15051E.dwg

PROJECT NAME:
WAYNFLETE LOWER SCHOOL
ADDITION & RENOVATIONS

WAYNFLETE SCHOOL
360 SPRING STREET
PORTLAND, MAINE 04102



THIS DRAWING IS THE PROPERTY OF SCOTT SIMONS ARCHITECTS (SSA) AND IS NOT TO BE COPIED OR REPRODUCED IN PART OR WHOLE.
2015 © SCOTT SIMONS ARCHITECTS, LLC

REVISION:		
ADDENDUM #2	02/09/17	DATE
1		DATE
2		DATE
3		DATE
4		DATE
5		DATE
6		DATE
DATE OF ISSUE:		12 JANUARY 2017
PROJECT NUMBER:		2013-0050
STATUS:		ISSUED FOR BID

POWER AND SYSTEMS PLAN

LOWER LEVEL

EP101R

N:\Projects\2015\15051 Waynflete School\00 Drawing Files\15051_EP.dwg Feb 06, 2017 - 2:37pm

A1 POWER AND SYSTEMS PLAN ~ LOWER LEVEL
1/8" = 1'-0"

A9 017A KITCHENETTE
1/4" = 1'-0"