



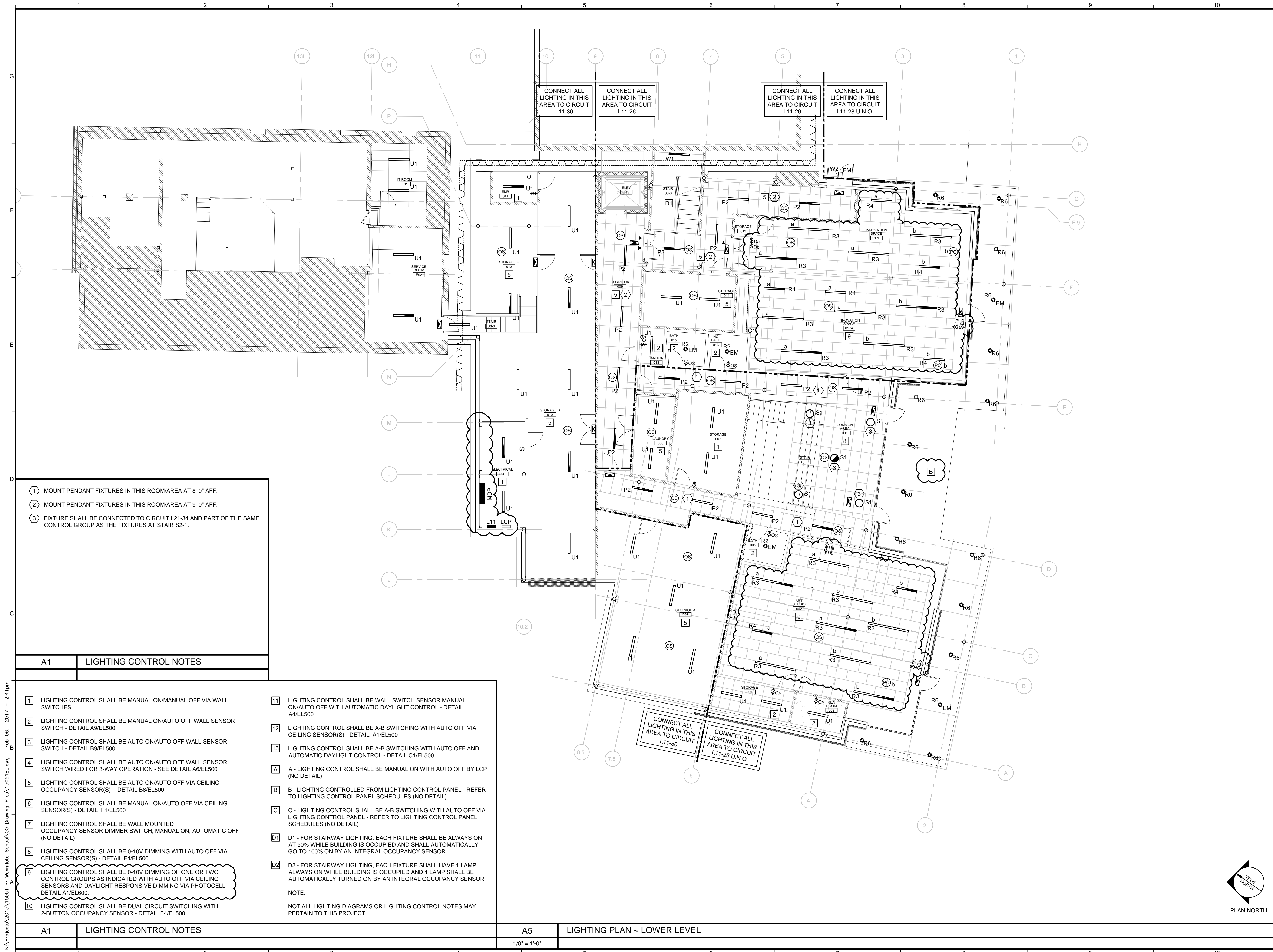
REVISION:	DATE
ADDENDUM #2	02/09/17
1	DATE
2	DATE
3	DATE
4	DATE
5	DATE
6	DATE

DATE OF ISSUE: 12 JANUARY 2017
PROJECT NUMBER: 2013-0050
STATUS: ISSUED FOR BID

**LIGHTING PLAN
LOWER LEVEL**



EL101R



- ① MOUNT PENDANT FIXTURES IN THIS ROOM/AREA AT 8'-0" AFF.
- ② MOUNT PENDANT FIXTURES IN THIS ROOM/AREA AT 9'-0" AFF.
- ③ FIXTURE SHALL BE CONNECTED TO CIRCUIT L21-34 AND PART OF THE SAME CONTROL GROUP AS THE FIXTURES AT STAIR S2-1.

A1 LIGHTING CONTROL NOTES

- | | |
|--|---|
| <ul style="list-style-type: none"> ① LIGHTING CONTROL SHALL BE MANUAL ON/MANUAL OFF VIA WALL SWITCHES. ② LIGHTING CONTROL SHALL BE MANUAL ON/AUTO OFF WALL SENSOR SWITCH - DETAIL A9/EL500 ③ LIGHTING CONTROL SHALL BE AUTO ON/AUTO OFF WALL SENSOR SWITCH - DETAIL B9/EL500 ④ LIGHTING CONTROL SHALL BE AUTO ON/AUTO OFF WALL SENSOR SWITCH WIRED FOR 3-WAY OPERATION - SEE DETAIL A6/EL500 ⑤ LIGHTING CONTROL SHALL BE AUTO ON/AUTO OFF VIA CEILING OCCUPANCY SENSOR(S) - DETAIL B6/EL500 ⑥ LIGHTING CONTROL SHALL BE MANUAL ON/AUTO OFF VIA CEILING SENSOR(S) - DETAIL F1/EL500 ⑦ LIGHTING CONTROL SHALL BE WALL MOUNTED OCCUPANCY SENSOR DIMMER SWITCH, MANUAL ON, AUTOMATIC OFF (NO DETAIL) ⑧ LIGHTING CONTROL SHALL BE 0-10V DIMMING WITH AUTO OFF VIA CEILING SENSOR(S) - DETAIL F4/EL500 ⑨ LIGHTING CONTROL SHALL BE 0-10V DIMMING OF ONE OR TWO CONTROL GROUPS AS INDICATED WITH AUTO OFF VIA CEILING SENSORS AND DAYLIGHT RESPONSIVE DIMMING VIA PHOTOCCELL - DETAIL A1/EL600. ⑩ LIGHTING CONTROL SHALL BE DUAL CIRCUIT SWITCHING WITH 2-BUTTON OCCUPANCY SENSOR - DETAIL E4/EL500 | <ul style="list-style-type: none"> ⑪ LIGHTING CONTROL SHALL BE WALL SWITCH SENSOR MANUAL ON/AUTO OFF WITH AUTOMATIC DAYLIGHT CONTROL - DETAIL A4/EL500 ⑫ LIGHTING CONTROL SHALL BE A-B SWITCHING WITH AUTO OFF VIA CEILING SENSOR(S) - DETAIL A1/EL500 ⑬ LIGHTING CONTROL SHALL BE A-B SWITCHING WITH AUTO OFF AND AUTOMATIC DAYLIGHT CONTROL - DETAIL C1/EL500 A - LIGHTING CONTROL SHALL BE MANUAL ON WITH AUTO OFF BY LCP (NO DETAIL) B - LIGHTING CONTROLLED FROM LIGHTING CONTROL PANEL - REFER TO LIGHTING CONTROL PANEL SCHEDULES (NO DETAIL) C - LIGHTING CONTROL SHALL BE A-B SWITCHING WITH AUTO OFF VIA LIGHTING CONTROL PANEL - REFER TO LIGHTING CONTROL PANEL SCHEDULES (NO DETAIL) D1 - FOR STAIRWAY LIGHTING, EACH FIXTURE SHALL BE ALWAYS ON AT 50% WHILE BUILDING IS OCCUPIED AND SHALL AUTOMATICALLY GO TO 100% ON BY AN INTEGRAL OCCUPANCY SENSOR D2 - FOR STAIRWAY LIGHTING, EACH FIXTURE SHALL HAVE 1 LAMP ALWAYS ON WHILE BUILDING IS OCCUPIED AND 1 LAMP SHALL BE AUTOMATICALLY TURNED ON BY AN INTEGRAL OCCUPANCY SENSOR <p>NOTE:
NOT ALL LIGHTING DIAGRAMS OR LIGHTING CONTROL NOTES MAY PERTAIN TO THIS PROJECT</p> |
|--|---|

A1 LIGHTING CONTROL NOTES

A5 LIGHTING PLAN - LOWER LEVEL

1/8" = 1'-0"

N:\Projects\2015\15051 - Waynflete School\00 Drawing Files\15051E.dwg Feb 06, 2017 - 2:41 pm