

PROJECT NAME:
**WAYNFLETE
LOWER SCHOOL**
ADDITION & RENOVATIONS

WAYNFLETE SCHOOL
360 SPRING STREET
PORTLAND, MAINE 04102



THIS DRAWING IS THE PROPERTY OF SCOTT SIMONS ARCHITECTS (SSA) AND IS NOT TO BE COPIED OR REPRODUCED IN PART OR WHOLE. 2015 © SCOTT SIMONS ARCHITECTS, LLC

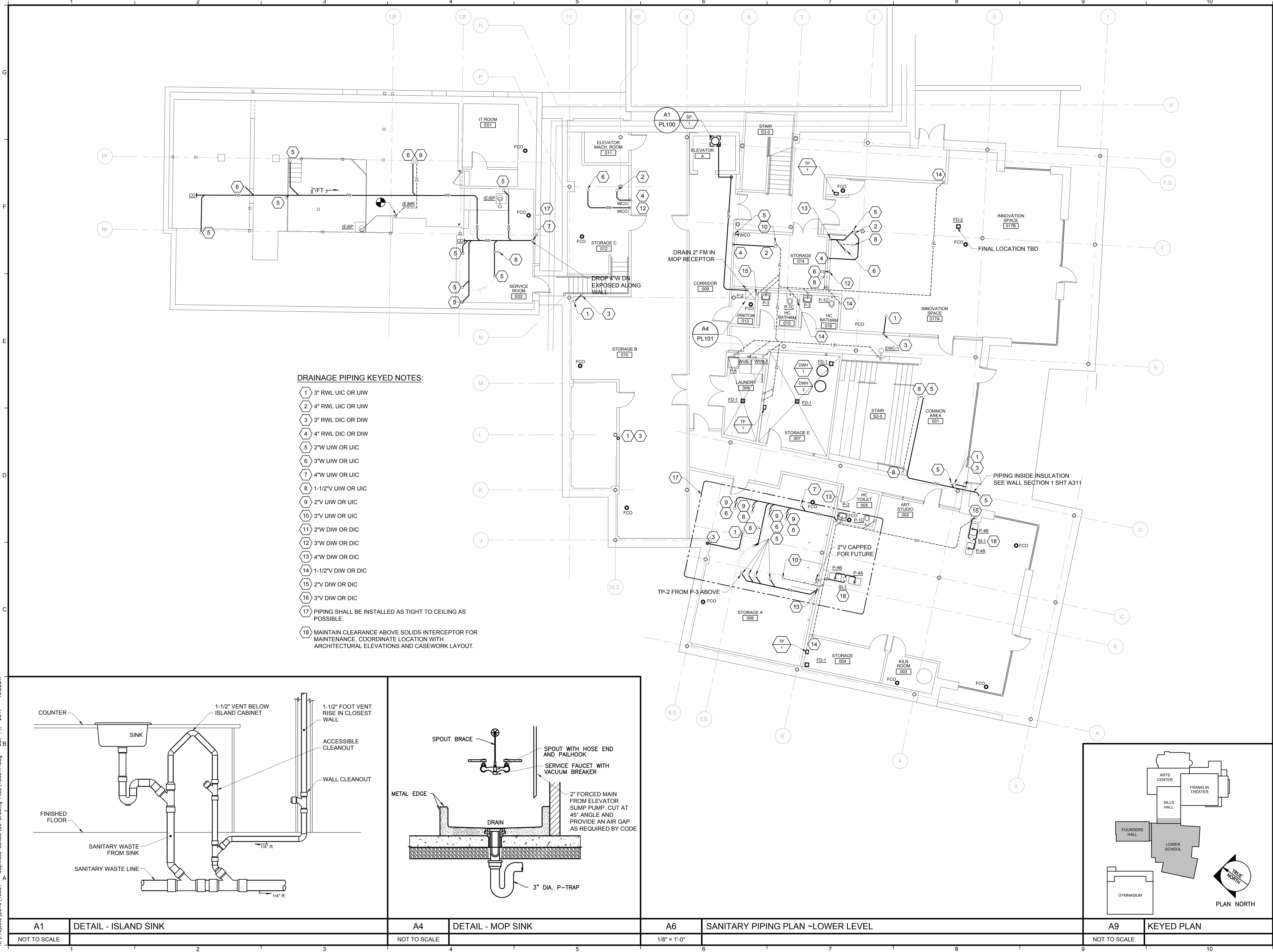
REVISION:

NO.	DATE
1	DATE
2	DATE
3	DATE
4	DATE
5	DATE
6	DATE

DATE OF ISSUE: 12 JANUARY 2017
PROJECT NUMBER: 2013-0050
STATUS: ISSUED FOR BID

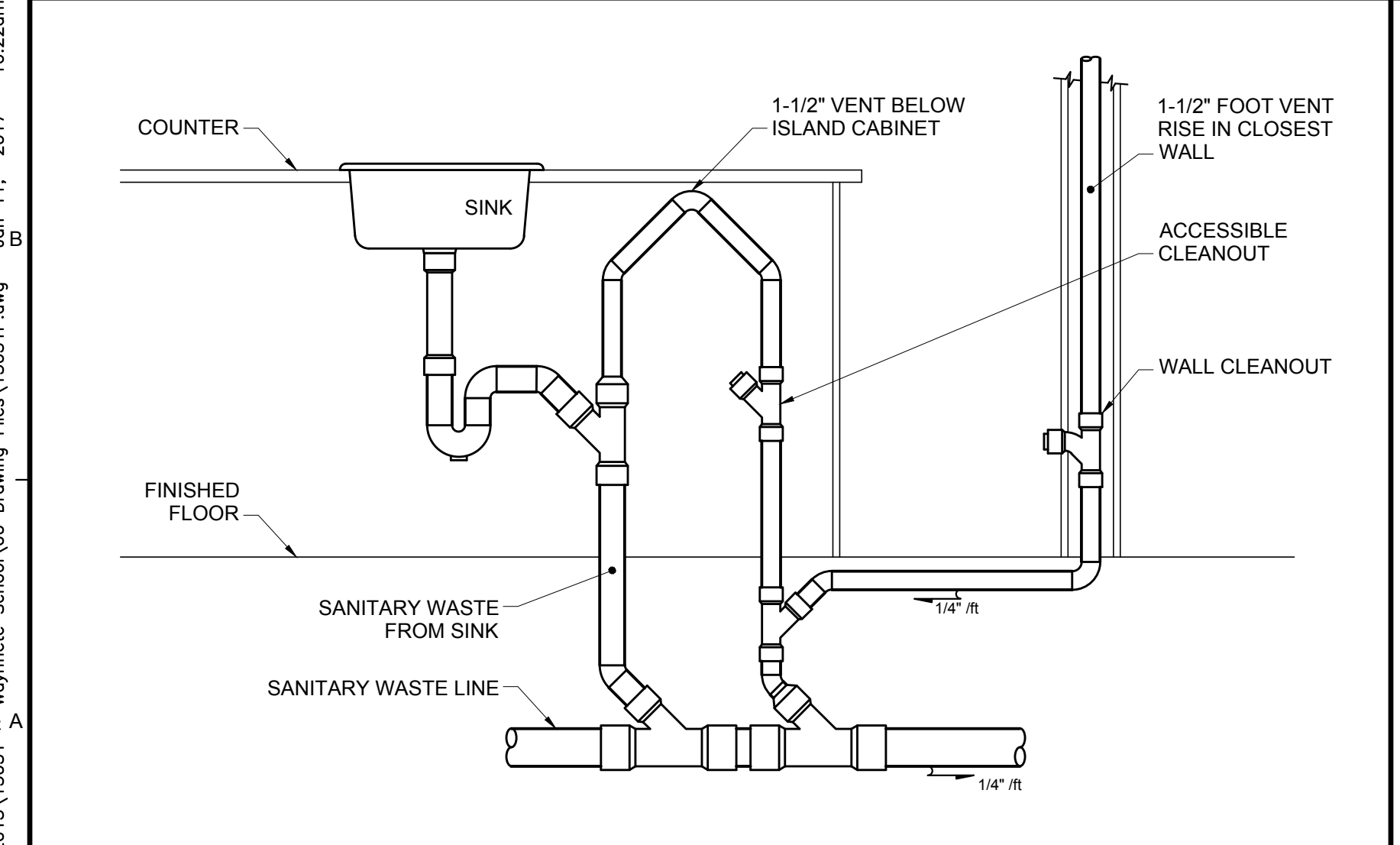
**SANITARY
PIPING PLAN ~
LOWER LEVEL**

PL101

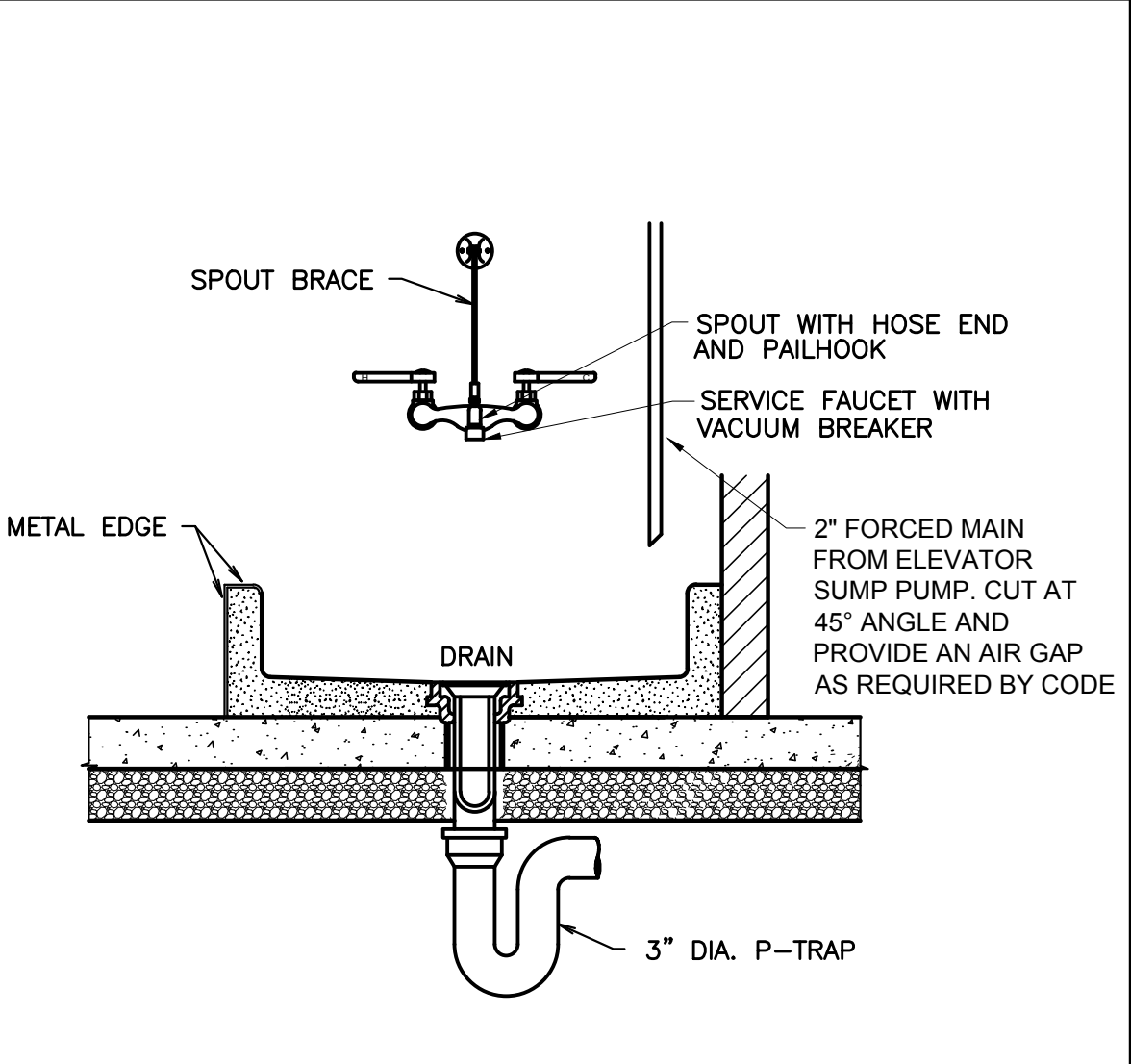


DRAINAGE PIPING KEYED NOTES:

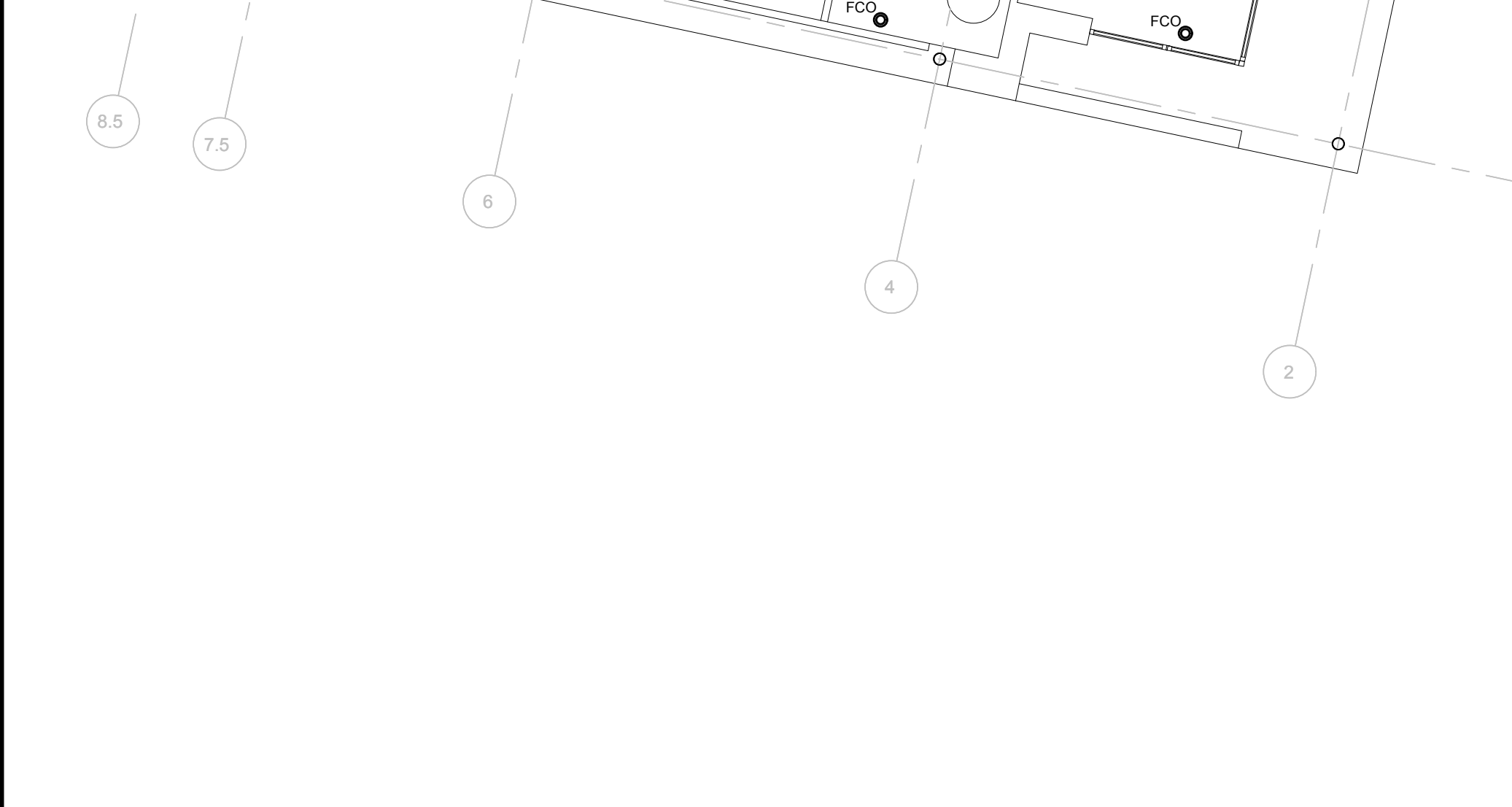
- 1) 3" RWL UIC OR UIW
- 2) 4" RWL UIC OR UIW
- 3) 3" RWL DIC OR DIW
- 4) 4" RWL DIC OR DIW
- 5) 2" W UIW OR UIC
- 6) 3" W UIW OR UIC
- 7) 4" W UIW OR UIC
- 8) 1-1/2" V UIW OR UIC
- 9) 2" V UIW OR UIC
- 10) 3" V UIW OR UIC
- 11) 2" W DIW OR DIC
- 12) 3" W DIW OR DIC
- 13) 4" W DIW OR DIC
- 14) 1-1/2" V DIW OR DIC
- 15) 2" V DIW OR DIC
- 16) 3" V DIW OR DIC
- 17) PIPING SHALL BE INSTALLED AS TIGHT TO CEILING AS POSSIBLE.
- 18) MAINTAIN CLEARANCE ABOVE SOLIDS INTERCEPTOR FOR MAINTENANCE. COORDINATE LOCATION WITH ARCHITECTURAL ELEVATIONS AND CASEWORK LAYOUT.



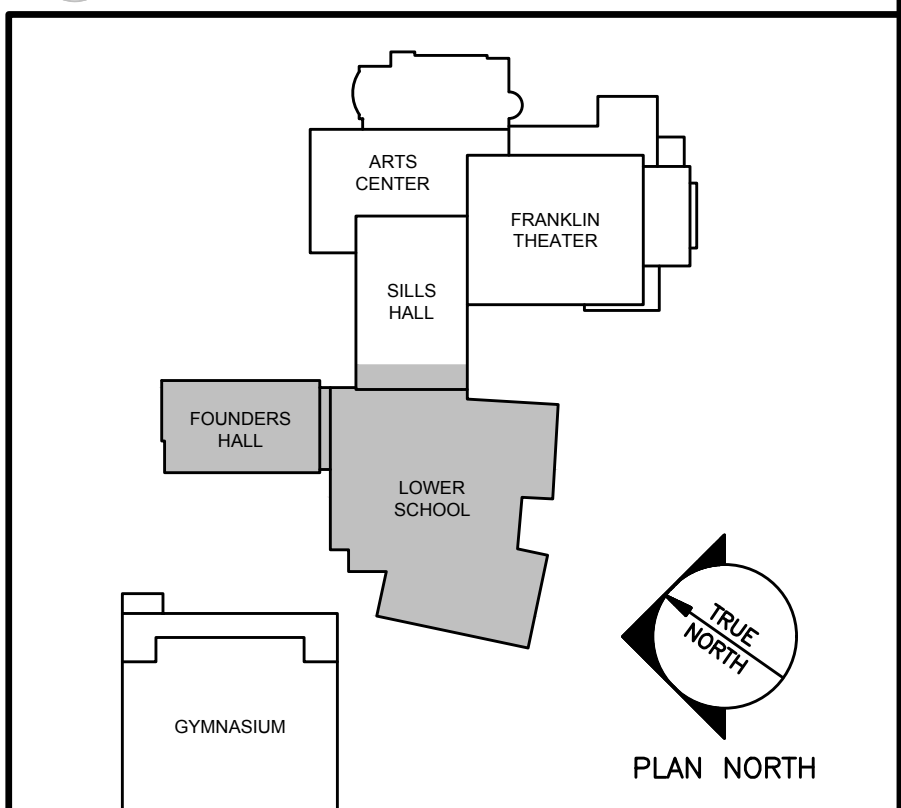
A1 **DETAIL - ISLAND SINK**
NOT TO SCALE



A4 **DETAIL - MOP SINK**
NOT TO SCALE



A6 **SANITARY PIPING PLAN ~ LOWER LEVEL**
1/8" = 1'-0"



A9 **KEYED PLAN**
NOT TO SCALE

N:\Projects\2015\15051 - Waynflete School\00 Drawing Files\15051P.dwg Jun 11, 2017 10:22am