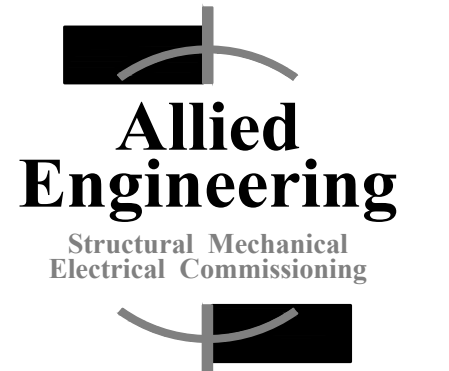




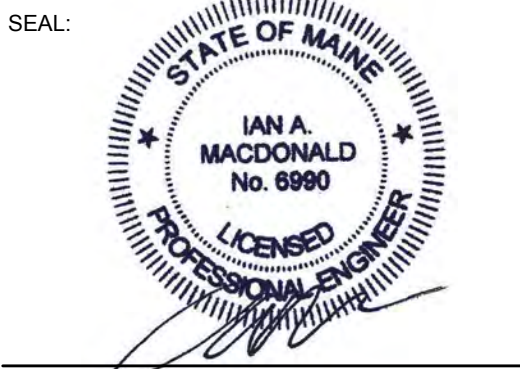
75 York Street,  
Portland, Maine 04101  
simonsarchitects.com  
207.772.4656



160 Veranda Street  
Portland, Maine 04103  
T: 207.221.2260  
F: 207.221.2266  
Web: www.allied-eng.com

Allied Project No: 15051  
Cad File: 15051M.dwg

PROJECT NAME:  
**WAYNFLETE  
LOWER SCHOOL**  
ADDITION & RENOVATIONS  
  
WAYNFLETE SCHOOL  
360 SPRING STREET  
PORTLAND, MAINE 04102



THIS DRAWING IS THE PROPERTY OF SCOTT SIMONS ARCHITECTS (SSA) AND IS NOT TO BE COPIED OR REPRODUCED IN PART OR WHOLE. © 2015 SCOTT SIMONS ARCHITECTS, LLC

REVISION:

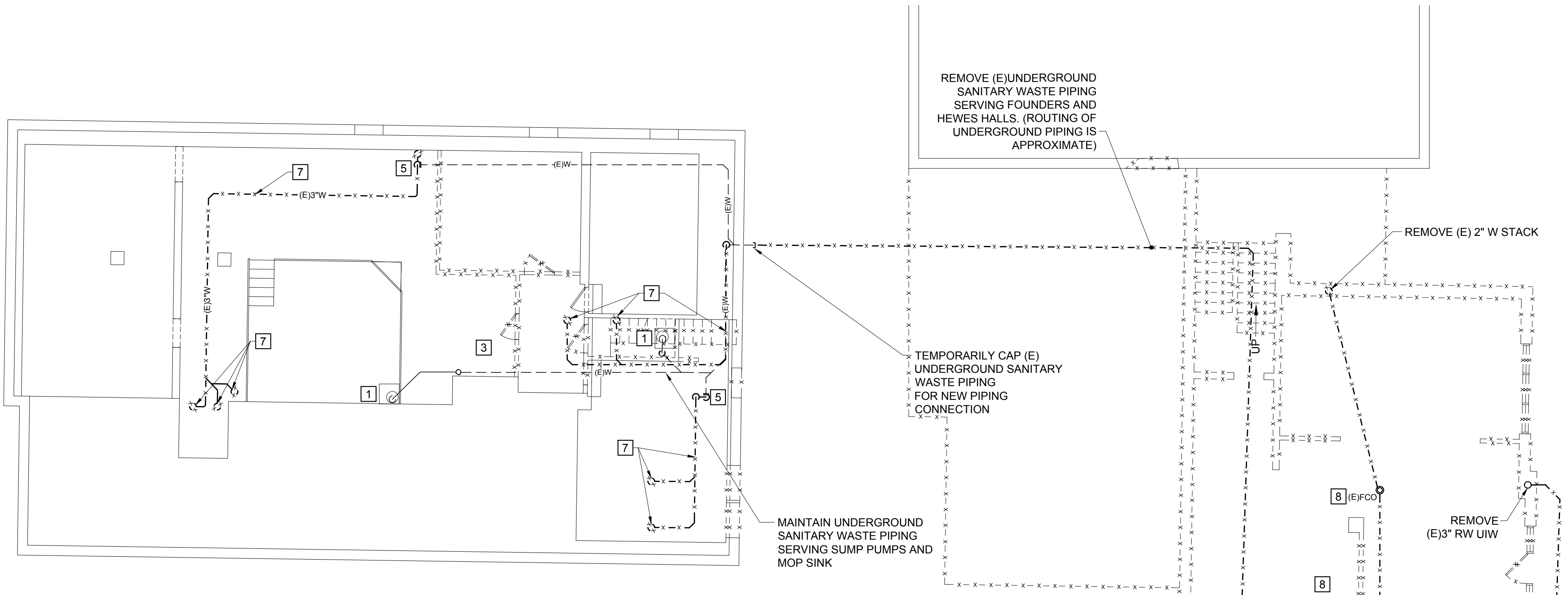
1	DATE
2	DATE
3	DATE
4	DATE
5	DATE
6	DATE

DATE OF ISSUE: 12 JANUARY 2017  
PROJECT NUMBER: 2013-0050  
STATUS: ISSUED FOR BID

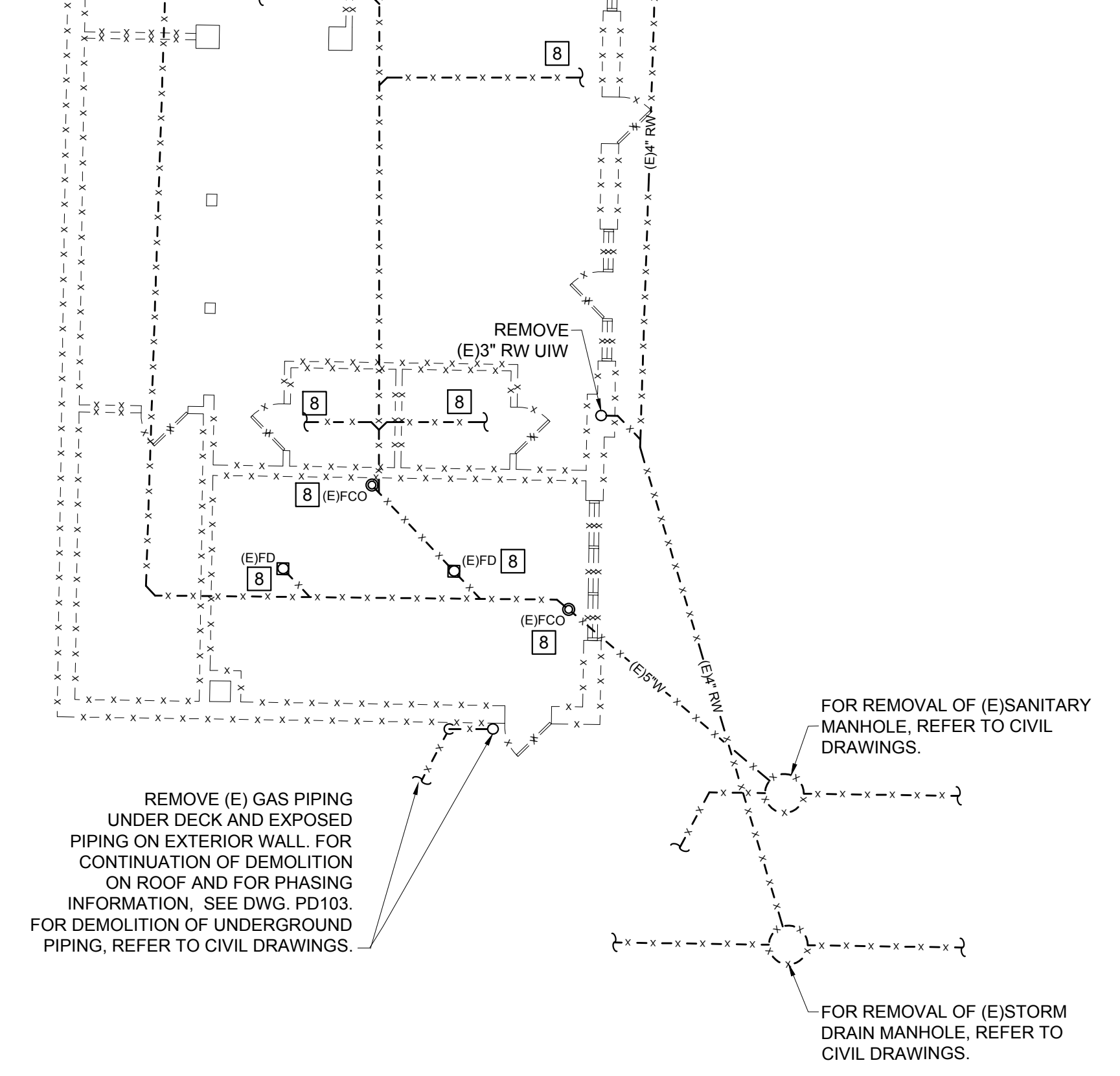
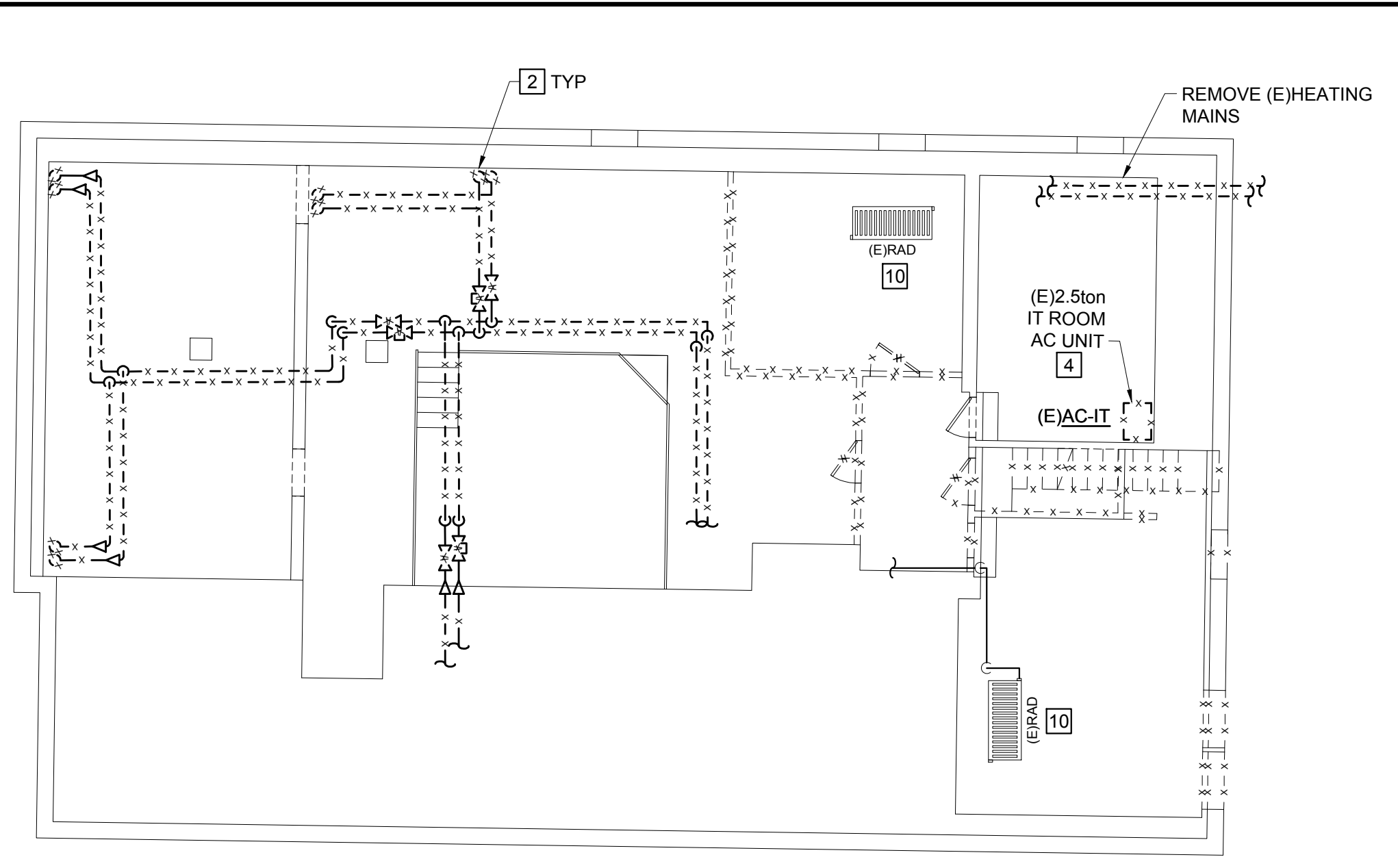
**PLUMBING AND  
HVAC DEMOLITION  
PART PLANS ~  
LOWER LEVEL**

**PD101**

**PLUMBING GENERAL NOTES:**  
1. UNDERGROUND SANITARY WASTE PIPING ROUTE IS APPROXIMATE.

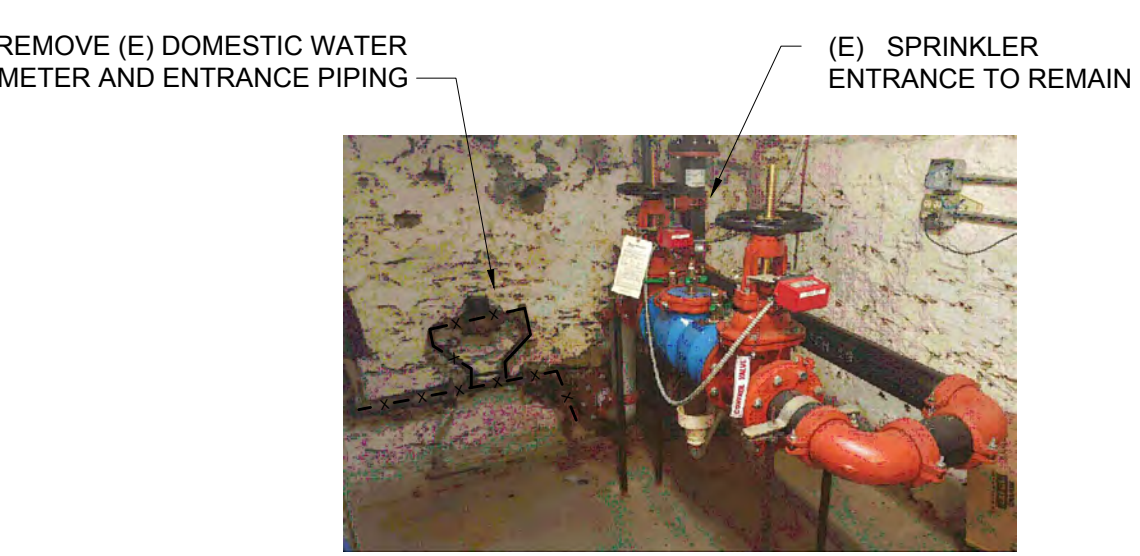


**MECHANICAL GENERAL NOTES:**  
1. REMOVE EXISTING HWS AND HWR PIPING

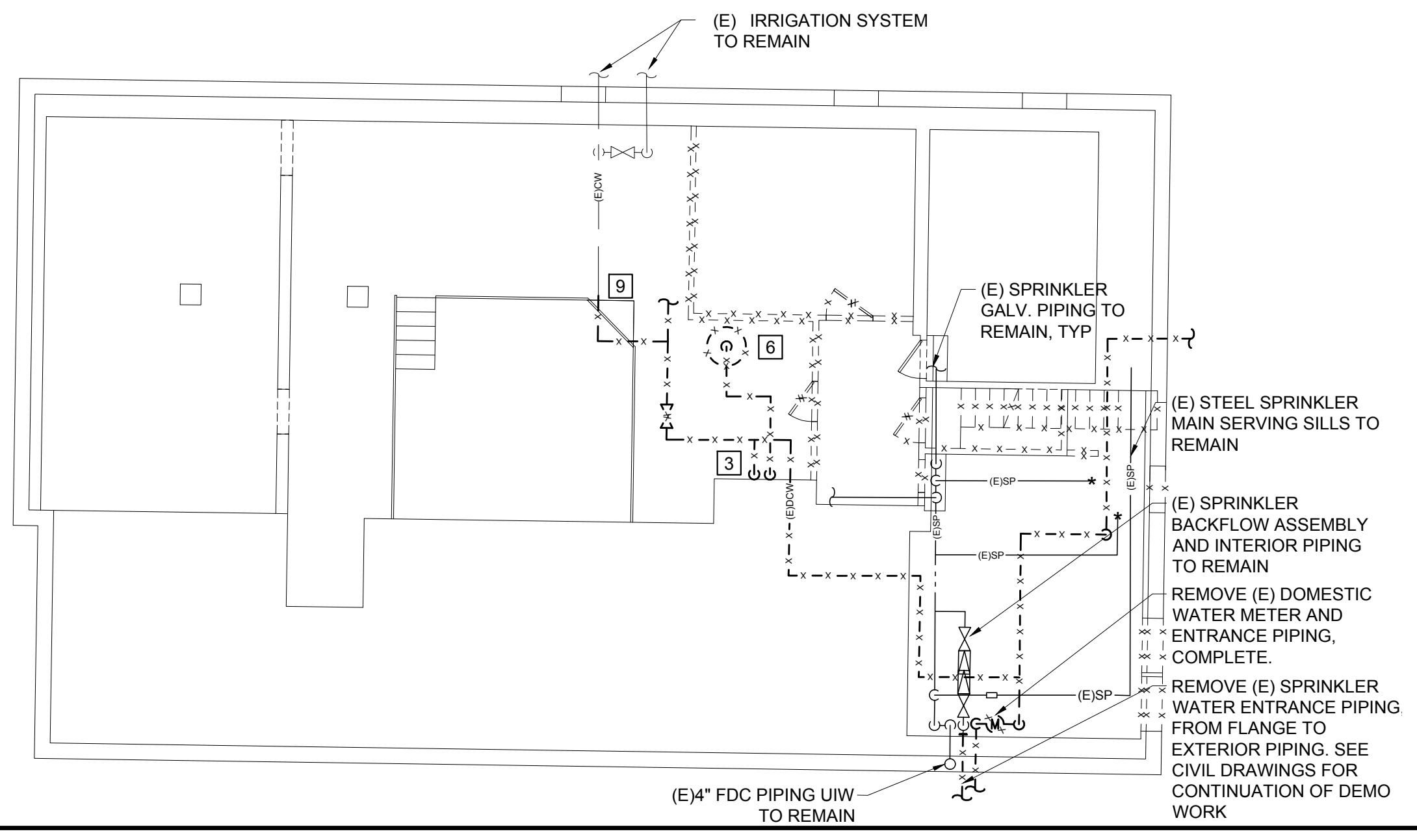


**C1 MECHANICAL DEMOLITION PART PLAN ~ LOWER LEVEL**  
1/8" = 1'-0" FOUNDERS

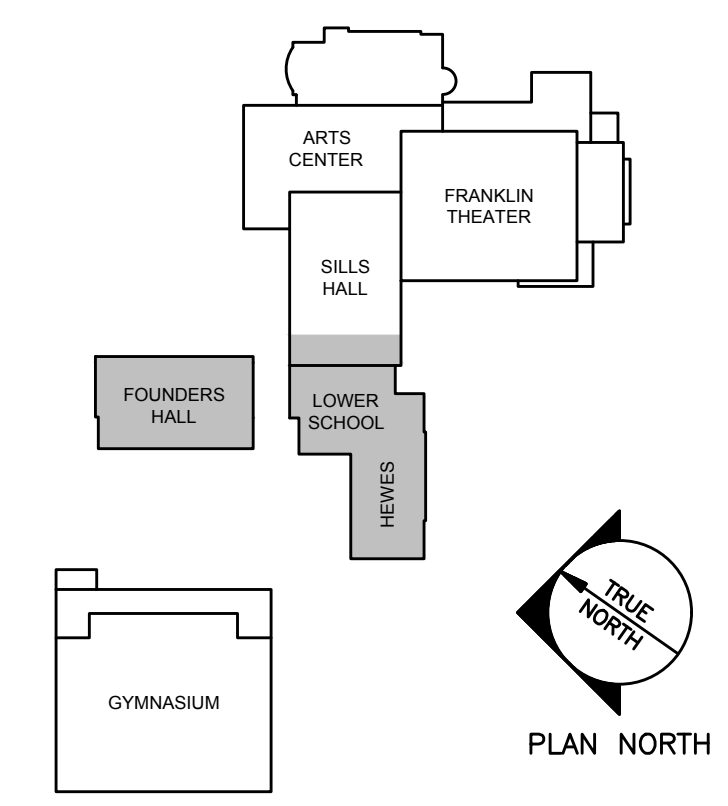
**B7 PLUMBING DRAINAGE DEMOLITION PLAN ~ LOWER LEVEL**  
1/8" = 1'-0" FOUNDERS, HEWES AND SILLS



**GENERAL NOTES FOR FOUNDERS BUILDING:**  
1. SPRINKLER PIPING IN BASEMENT SHALL BE MODIFIED TO PROVIDE COMPLETE SPRINKLER COVERAGE FOR NEW LAYOUT. PIPING ON MAIN AND UPPER LEVELS MAY BE REUSED TO THE EXTENT POSSIBLE TO MEET NEW LAYOUT AND NFPA 13 REQUIREMENTS AND BASED UPON NEW HYDRAULIC CALCULATIONS. (E) GLYCOL SYSTEM IN ATTIC SHALL REMAIN. GLYCOL SYSTEM COMPONENTS ON UPPER LEVEL SHALL BE RELOCATED. NEW SPRINKLER HEADS SHALL BE PROVIDED THROUGHOUT, WITH THE EXCEPTION OF THE ATTIC, WHERE THE EXISTING HEADS SHALL REMAIN UNDISTURBED.



- DEMOLITION KEYED NOTES:**
- EXISTING SUMP PUMP TO REMAIN.
  - EXISTING HWS & R UP TO OUTSIDE WALL RADIATORS TO BE REMOVED.
  - EXISTING UTILITY SINK TO REMAIN. REMOVE (E) SUPPLY AND VENT PIPING ABOVE FIXTURE. TEMPORARILY CAP FOR FUTURE TIE IN.
  - IT ROOM AC UNIT TO BE RELOCATED AND REMAIN ACTIVE THROUGHOUT CONSTRUCTION.
  - CAP AND ABANDON (E) UNDERGROUND SANITARY WASTE PIPING.
  - REMOVE (E) ELECTRIC DWH AND ASSOCIATED PIPING COMPLETE.
  - REMOVE (E) OVERHEAD SANITARY WASTE PIPING SERVING FIXTURES ABOVE, COMPLETE.
  - REMOVE (E) PLUMBING FIXTURE AND ASSOCIATED PIPING COMPLETE.
  - REMOVE (E) CW PIPING IN BASEMENT. CAP (E) PIPING FOR IRRIGATION SYSTEM FOR FUTURE TIE IN.
  - (E) RADIATOR AND ASSOCIATED PIPING TO REMAIN



**A1 PLUMBING SUPPLY DEMOLITION PART PLAN ~ LOWER LEVEL**  
1/8" = 1'-0" FOUNDERS

**A7 DEMOLITION KEYED NOTES**  
NONE

**A9 KEYED PLAN**  
NOT TO SCALE

N:\Projects\2015\15051 - Waynflete School\00 Drawing Files\15051P.dwg Jun 11, 2017 10:17am