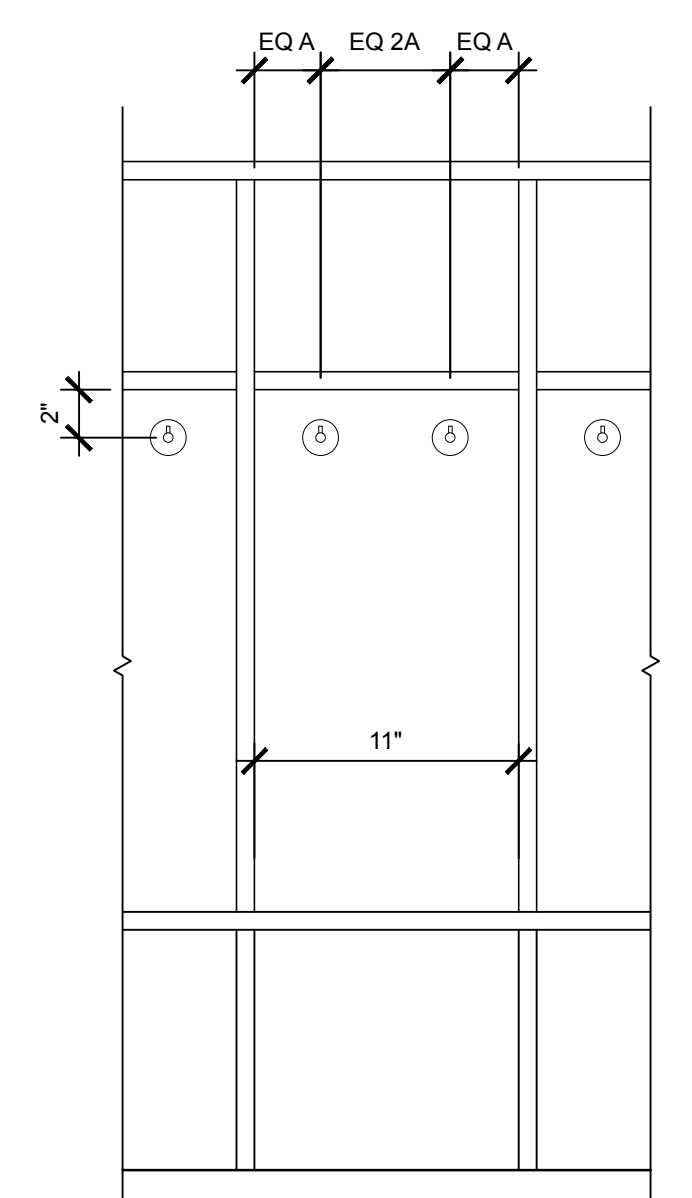
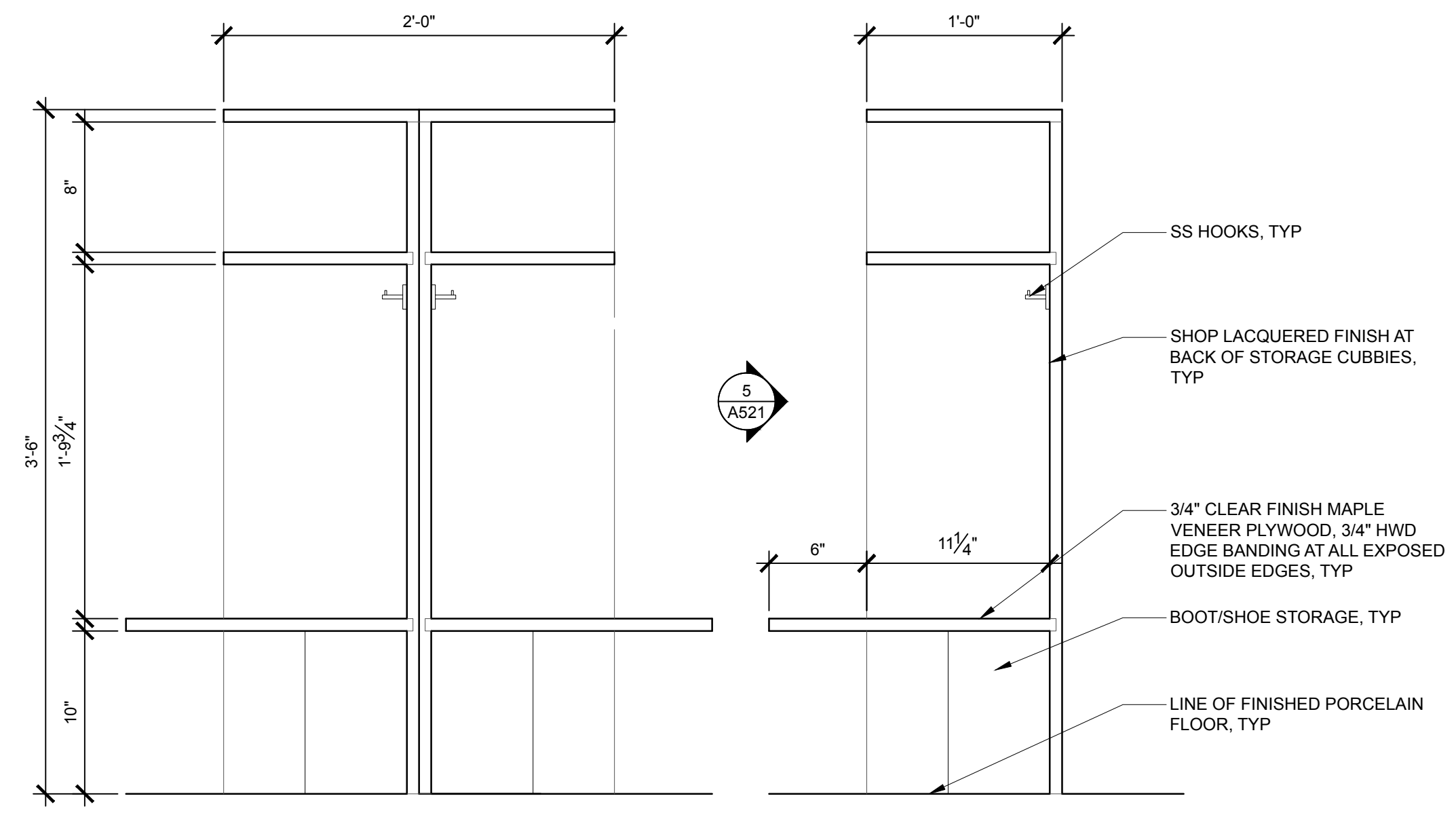
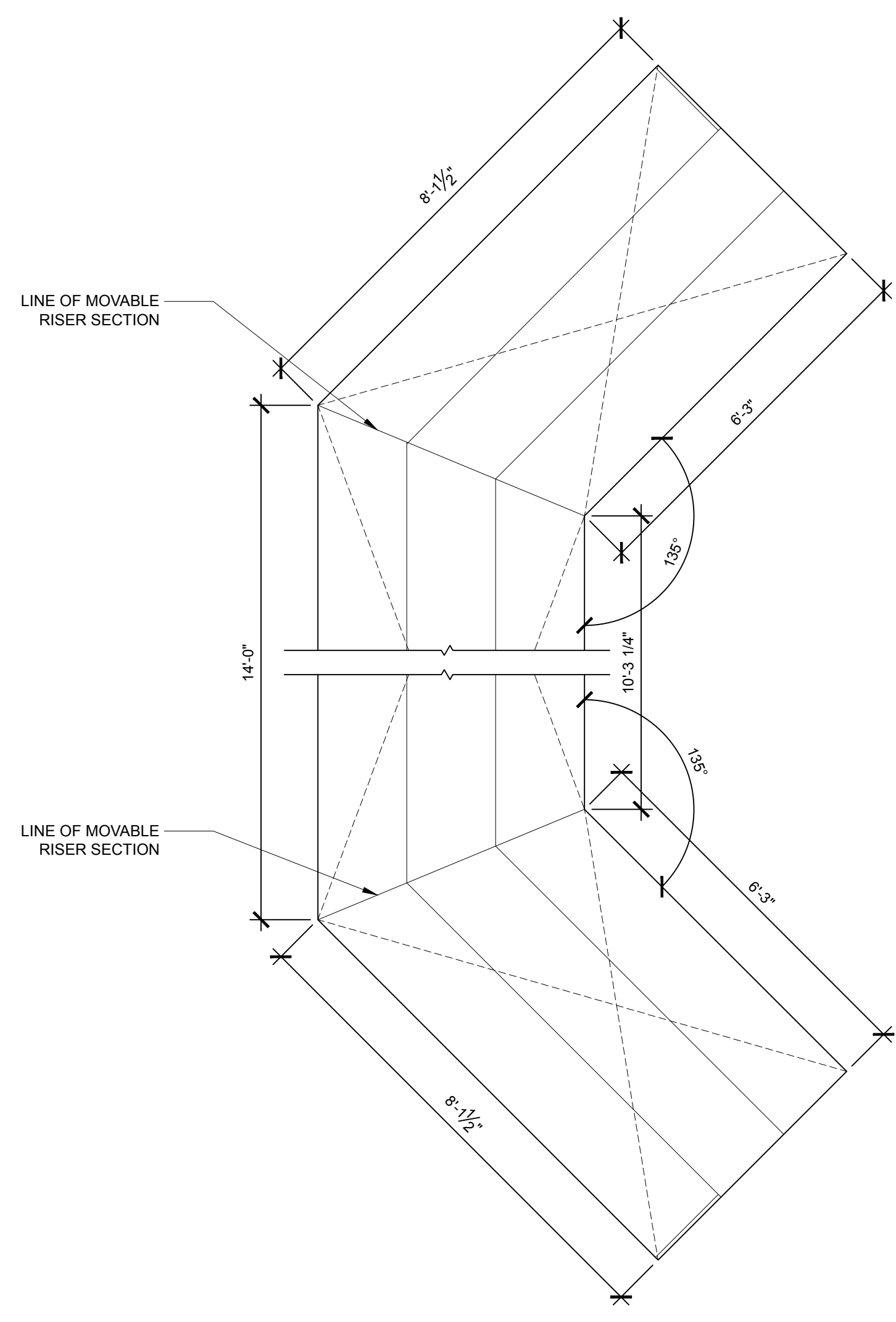


1 CLASSROOM RISER SECTION DETAIL
SCALE: 1-1/2" = 1'-0"

3 CLASSROOM MOVABLE STORAGE SECTION DETAIL, TYP
SCALE: 1-1/2" = 1'-0"

6 COAT/BOOT CUBBY STORAGE SECTION DETAIL @ ROOM 114
SCALE: 1-1/2" = 1'-0"

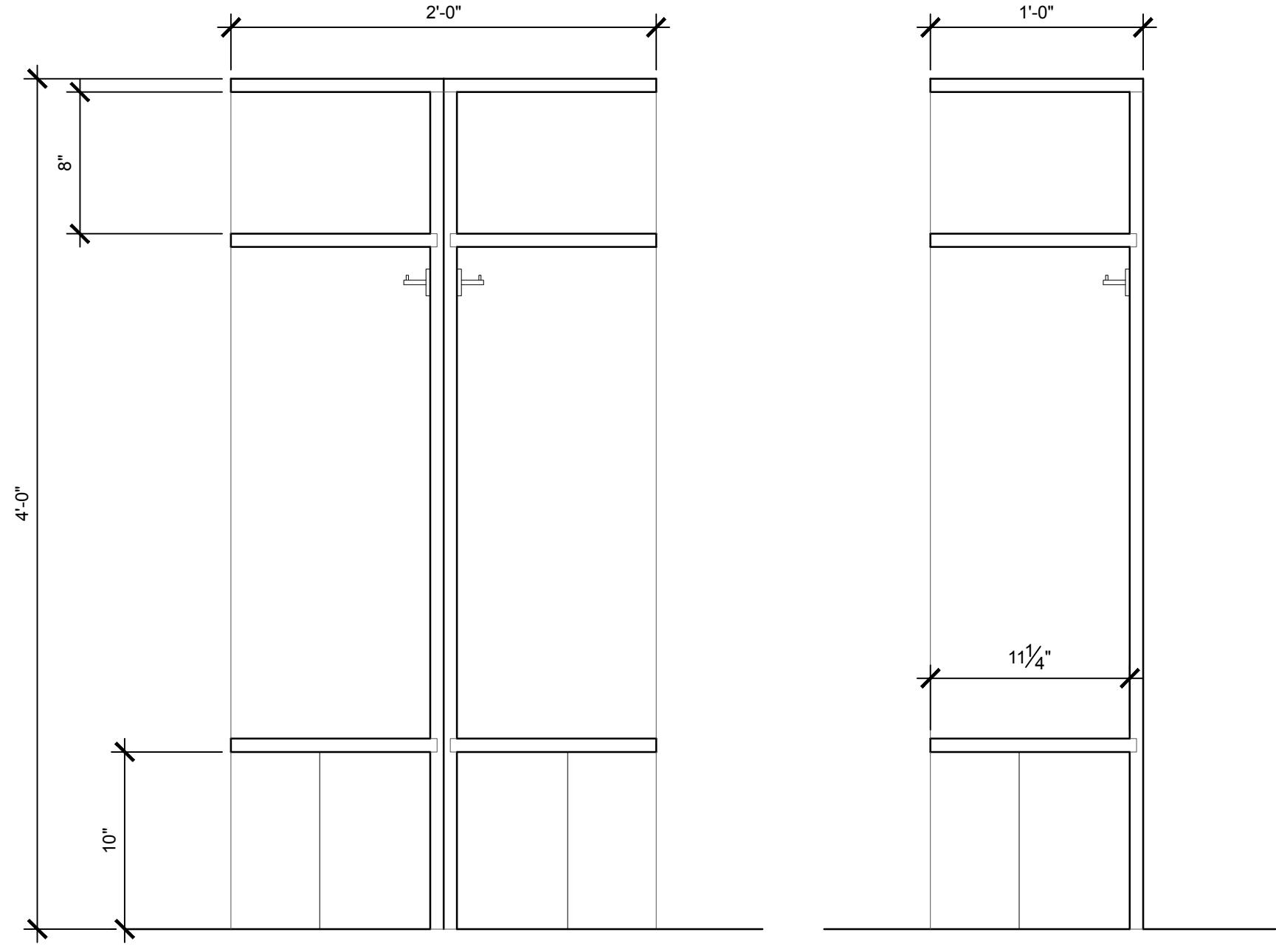
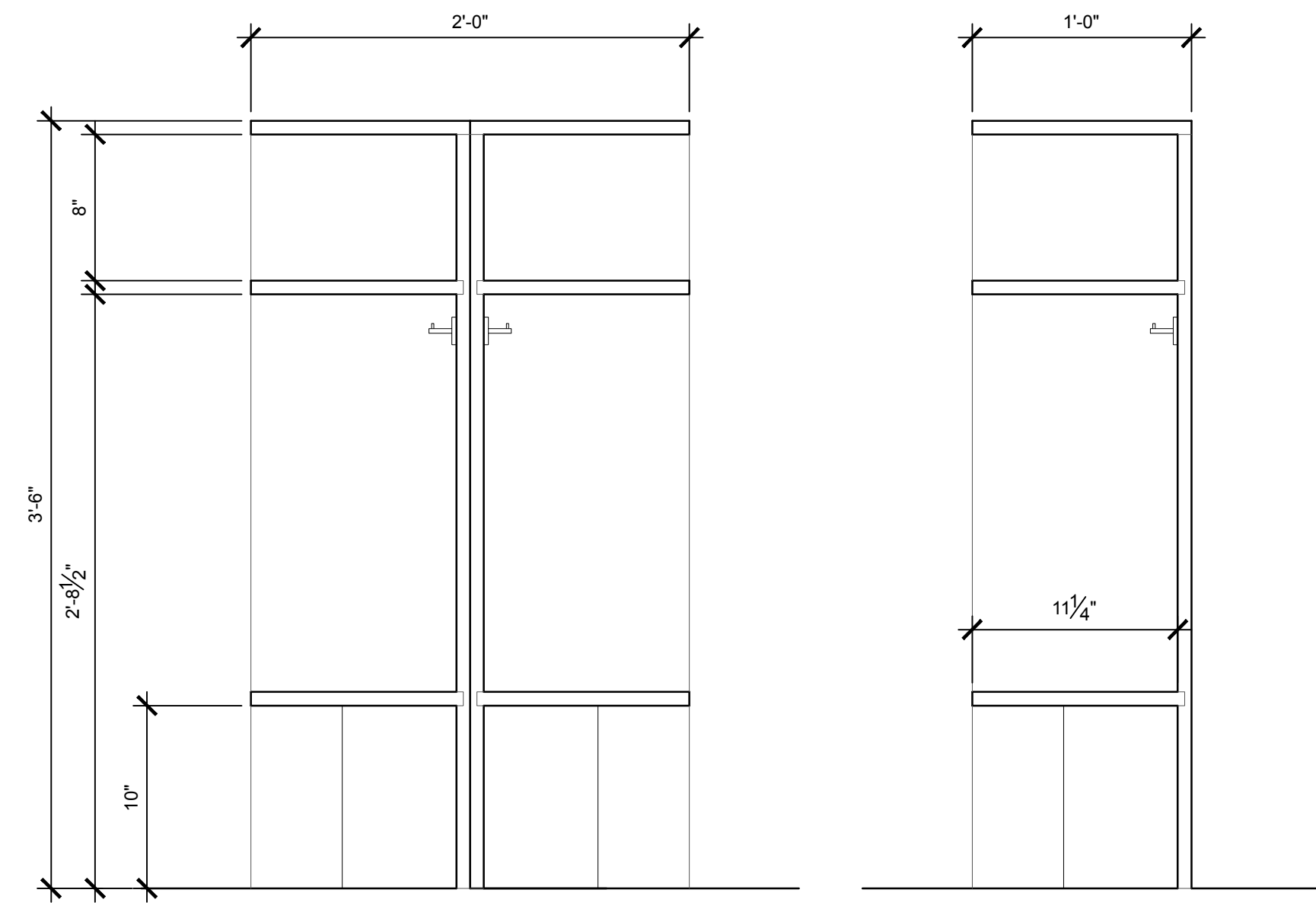


4 COAT/BOOT CUBBY STORAGE SECTION DETAIL @ ROOM 114
SCALE: 1-1/2" = 1'-0"

7 COAT/BOOT CUBBY STORAGE ELEVATION @ ROOM 114
SCALE: 1-1/2" = 1'-0"

2 CLASSROOM RISER PLAN
SCALE: 1/2" = 1'-0"

- GENERAL NOTES:**
- ALL APPLIANCES INCLUDING REFRIGERATORS, DISHWASHERS STOVE/OVEN UNITS, AND LAUNDRY MACHINES ARE TO BE PROVIDED BY OWNER, INSTALLED BY CONTRACTOR. APPLIANCES SHOWN IN DRAWINGS ARE FOR REFERENCE ONLY. FINAL SCHEDULE OF APPLIANCES TO BE PROVIDED BY OWNER, FINAL DIMENSIONS TO BE CONFIRMED BASED ON THE FINAL SELECTION PRIOR TO SHOP DRAWING PROCESS.
 - ADD ALTERNATE #3: PROVIDE SOLID SURFACE MATERIAL FOR COUNTERS AND WORK SURFACES WHERE PLASTIC LAMINATE IS SPECIFIED. REPLACE TOE-KICK AT FREESTANDING, MODULAR CASEWORK SHELVING UNITS WITH LOCKING CASTERS.

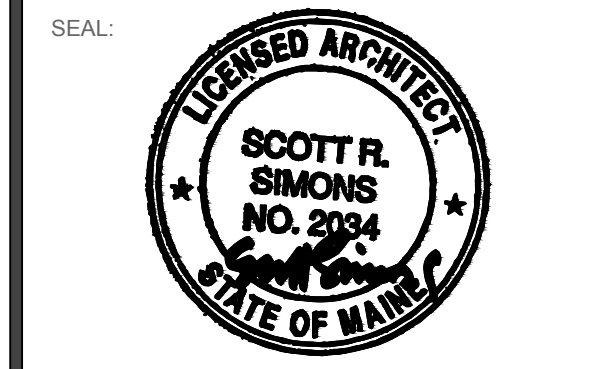


5 COAT/BOOT CUBBY STORAGE SECTION DETAIL @ ROOM 101A
SCALE: 1-1/2" = 1'-0"

8 COAT CUBBY STORAGE SECTION DETAIL @ ROOM 201A
SCALE: 1-1/2" = 1'-0"

PROJECT NAME:
**WAYNFLETE
LOWER SCHOOL**
ADDITION & RENOVATIONS

WAYNFLETE SCHOOL
360 SPRING STREET
PORTLAND, MAINE 04102



THIS DRAWING IS THE PROPERTY OF SCOTT SIMONS ARCHITECTS (SSA) AND IS NOT TO BE COPIED OR REPRODUCED IN PART OR WHOLE. 2016 © SCOTT SIMONS ARCHITECTS, LLC

REVISION:

1	DATE
2	DATE
3	DATE
4	DATE
5	DATE
6	DATE

DATE OF ISSUE: 12 JANUARY 2017
PROJECT NUMBER: 2013-0050
STATUS: 100% CONSTRUCTION DOCUMENTS ISSUED FOR BID

MILLWORK