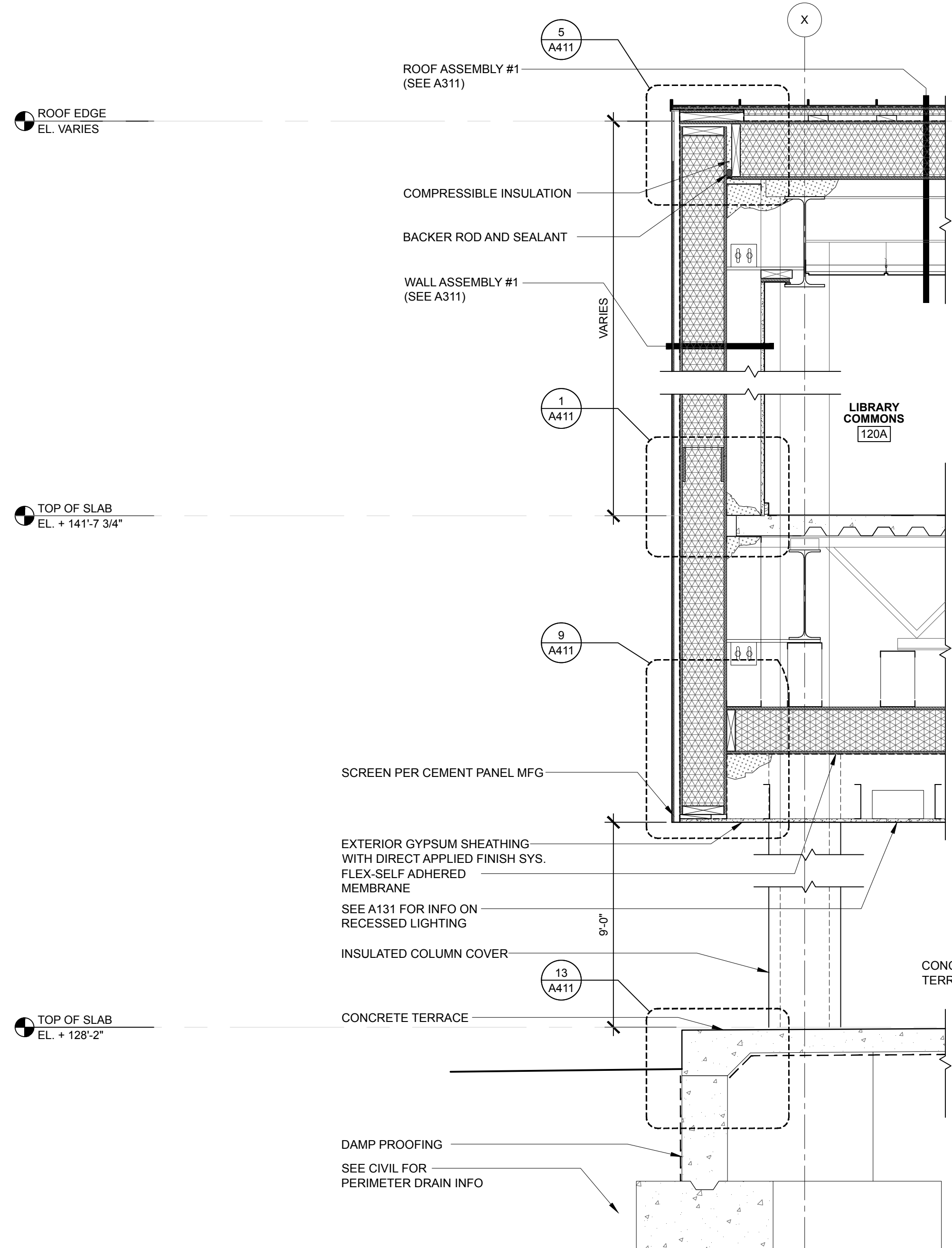
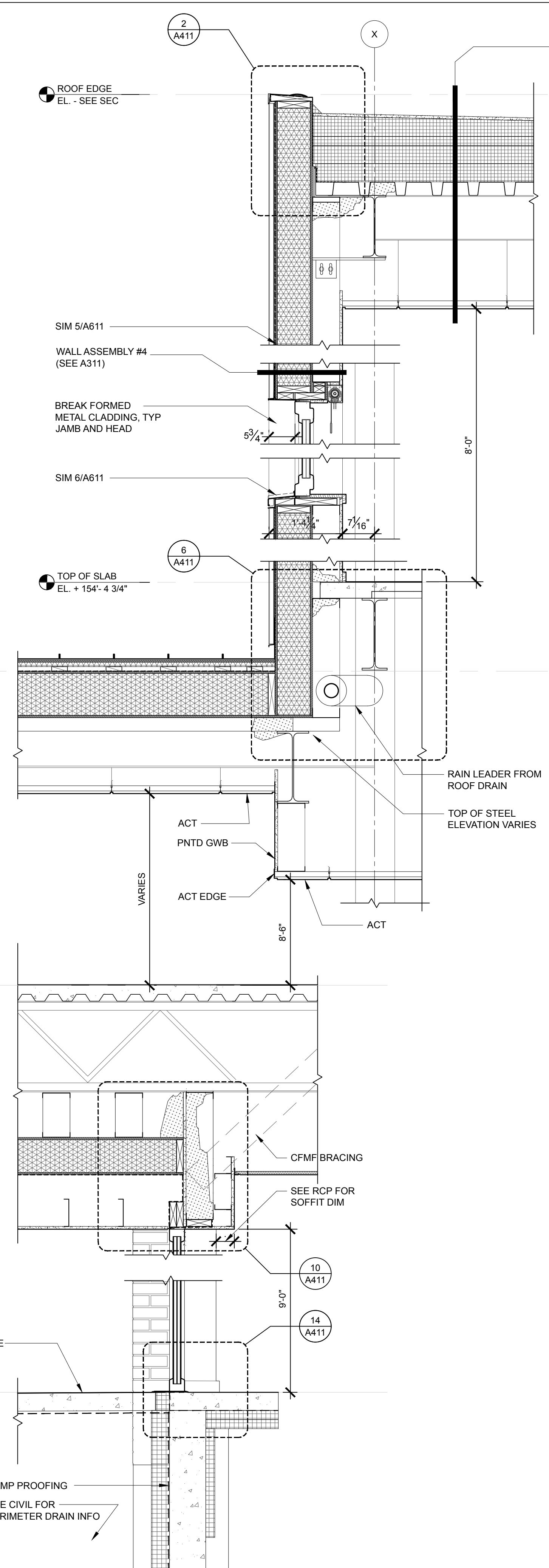


| | | |
|---|--|---|
| WALL ASSEMBLY #1 (U-MAX - 0.023) | WALL ASSEMBLY #2 (U-MAX 0.023) | WALL ASSEMBLY #3 (U-MAX 0.025) |
| <ul style="list-style-type: none"> - EXTERIOR - THROUGH-BODY FIBER CEMENT RAIN SCREEN SYSTEM - STRAPPING AND EPDM GASKET PER RAIN SCREEN MFG - FLUID APPLIED BARRIER - 8" POLYISO SIP (R-45) - 6" METAL FRAMING - 5/8" PAINTED GWB - INTERIOR | <ul style="list-style-type: none"> - EXTERIOR - VENEER BRICK MASONRY - 1/2" NOMINAL AIRSPACE - 6" RIGID INSULATION (R-37.5) - FLUID APPLIED BARRIER - EXTERIOR GYPSUM SHEATHING - 6" METAL FRAMING - CELLULOSE INSULATION (6" - R-21) - GWB - TAPED AND MUDDED - METAL FRAMING - 5/8" PAINTED GWB - INTERIOR | <ul style="list-style-type: none"> - EARTH - 6" RIGID INSULATION (R-37.5) - WATER-PROOFING / DAMP-PROOFING AS INDICATED - CONCRETE FOUNDATION WALL - VAPOR BARRIER - 3" RIGID INSULATION (R-18.75) - METAL FRAMING - CELLULOSE INSULATION (3/8" - R-13) - 5/8" PAINTED GWB - INTERIOR |
| WALL ASSEMBLY #4 (U-VALUE - 0.025 MAX) | ROOF ASSEMBLY #1 (U-MAX - 0.0156) | ROOF ASSEMBLY #2 (U-MAX - X.XXX) |
| <ul style="list-style-type: none"> - EXTERIOR - METAL CLADDING - SLIP SHEET - FLUID APPLIED BARRIER - 6" POLYISO SIP (R-35) - FLUID APPLIED BARRIER - 6" METAL FRAMING - CELLULOSE INSULATION (6" - R-21) - 5/8" PAINTED GWB - INTERIOR | <ul style="list-style-type: none"> - EXTERIOR - STANDING SEAM METAL PANEL - WEATHER BARRIER - INSULATED VENTED NAILBOARD (R-5.7) - ADHERED BARRIER - 10 1/2" POLYISO SIP (R-59) - METAL DECK - MINERAL FIBER ACOUSTIC INSULATION - FINISH CEILING SEE RCP - INTERIOR | <ul style="list-style-type: none"> - EXTERIOR - ADHERED MEMBRANE ROOFING - COVER BOARD - TAPERED INSULATION - RIGID INSULATION (R-62) - STEEL ROOF DECK - FINISH CEILING - INTERIOR |

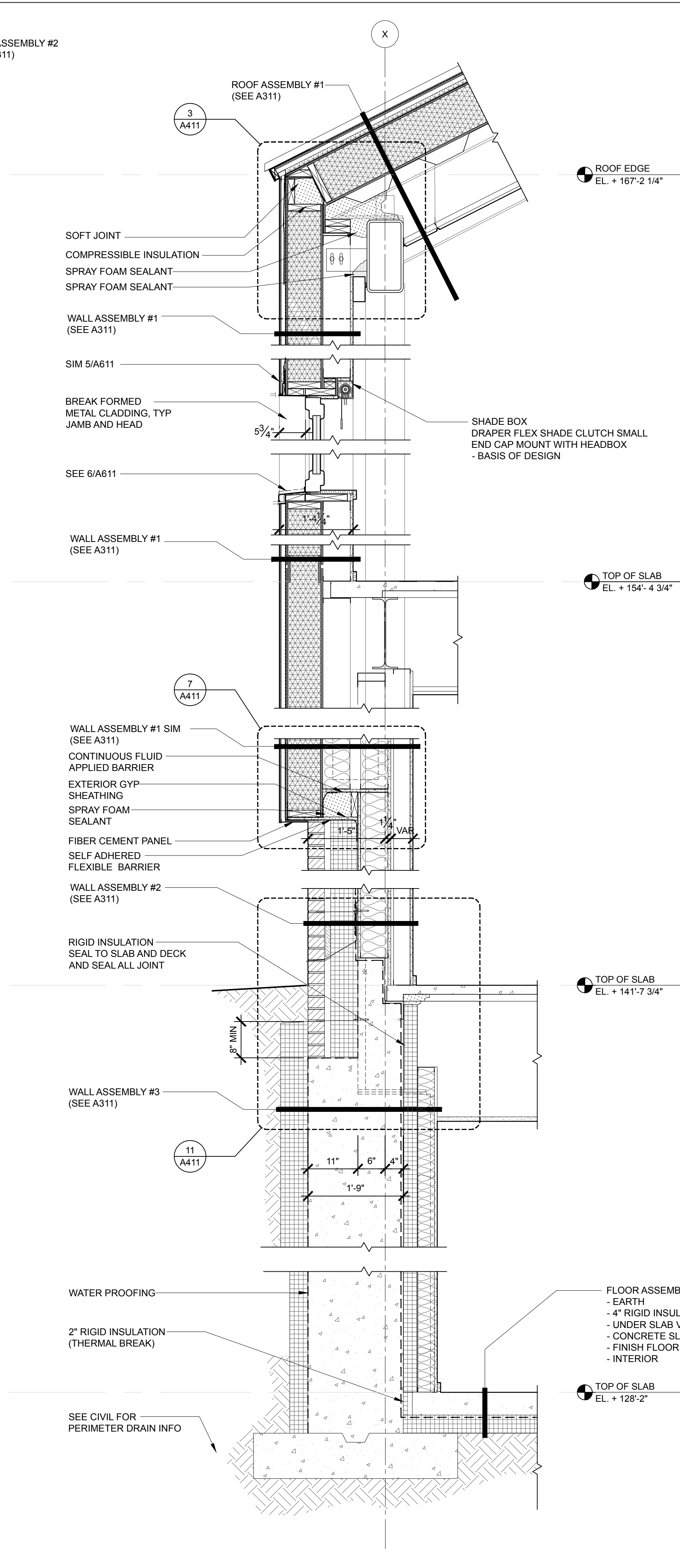
NOTES
- PROVIDE SEAL AT ALL GWB PENETRATIONS, INCLUDING BUT NOT LIMITED TO CONDUIT, MECHANICAL, AND ELECTRICAL DEVICES.
- SEAL PENETRATIONS THROUGH SIP PER MANUFACTURER'S REQUIREMENTS



1 WALL SECTION, TYPICAL
SCALE: 3/4" = 1'-0"



2 WALL SECTION, TYPICAL
SCALE: 3/4" = 1'-0"



3 WALL SECTION, TYPICAL
SCALE: 3/4" = 1'-0"

PROJECT NAME:
WAYNFLEET LOWER SCHOOL ADDITION & RENOVATIONS
WAYNFLEET SCHOOL
360 SPRING STREET
PORTLAND, MAINE 04102



THIS DRAWING IS THE PROPERTY OF SCOTT SIMONS ARCHITECTS (SSA) AND IS NOT TO BE COPIED OR REPRODUCED IN PART OR WHOLE 2016 © SCOTT SIMONS ARCHITECTS, LLC

REVISION:

| | |
|---|------|
| 1 | DATE |
| 2 | DATE |
| 3 | DATE |
| 4 | DATE |
| 5 | DATE |
| 6 | DATE |

DATE OF ISSUE: 12 JANUARY 2017
PROJECT NUMBER: 2013-0050
STATUS: 100% CONSTRUCTION DOCUMENTS ISSUED FOR BID

WALL SECTIONS

A311

