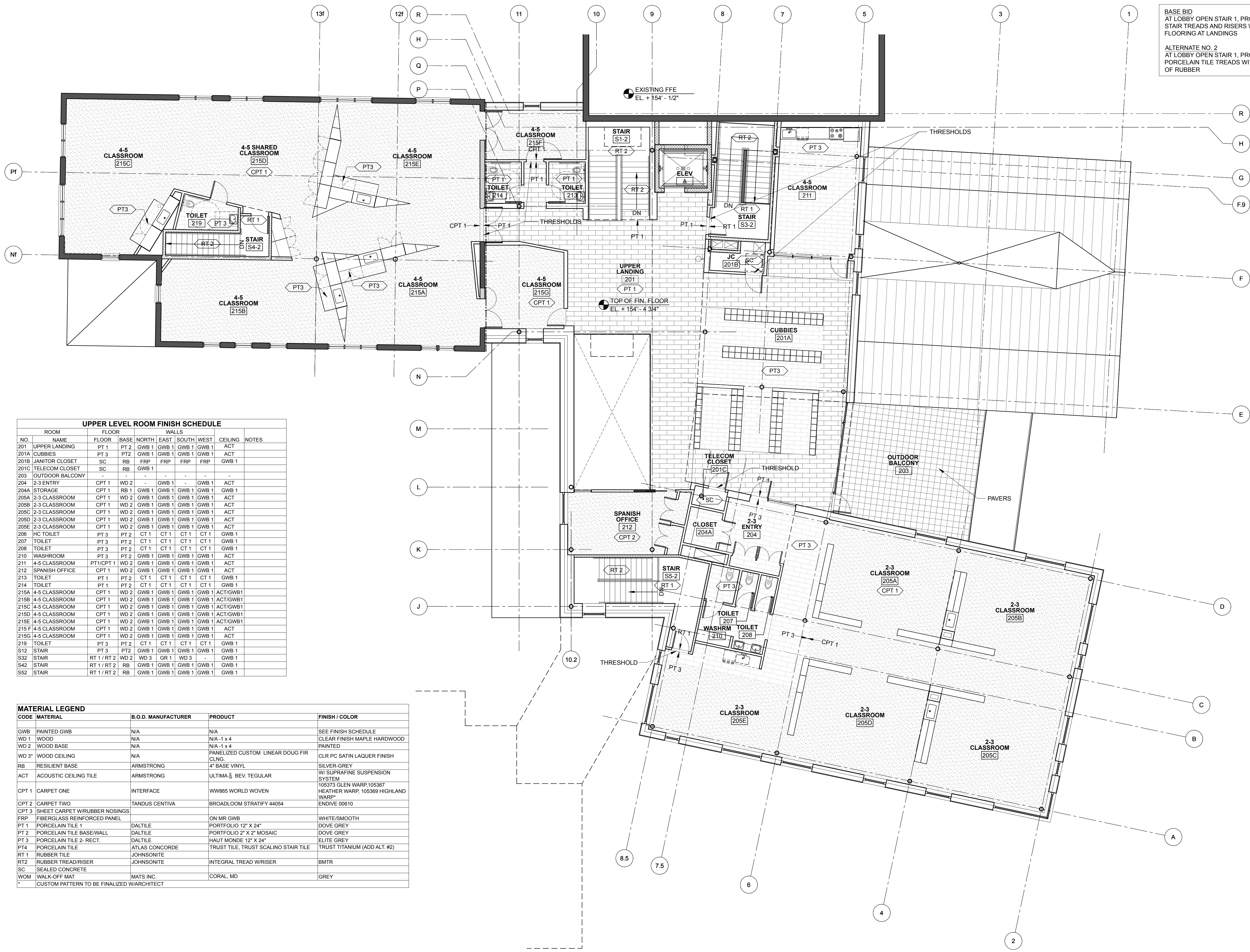


BASE BID  
AT LOBBY OPEN STAIR 1, PROVIDE RESILIENT  
STAIR TREADS AND RISERS WITH RUBBER TILE  
FLOORING AT LANDINGS

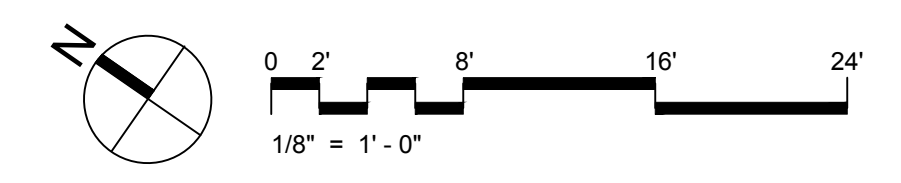
ALTERNATE NO. 2  
AT LOBBY OPEN STAIR 1, PROVIDE UNGLAZED  
PORCELAIN TILE TREADS WITH NOSING IN LIEU  
OF RUBBER



UPPER LEVEL ROOM FINISH SCHEDULE										
ROOM	FLOOR	BASE	NORTH	EAST	SOUTH	WEST	CEILING	WALLS	NOTES	
201	UPPER LANDING	PT 1	PT 2	GWB 1	GWB 1	GWB 1	GWB 1	ACT		
201A	CUBBIES	PT 3	PT 2	GWB 1	GWB 1	GWB 1	GWB 1	ACT		
201B	JANITOR CLOSET	SC	RB	FRP	FRP	FRP	FRP	GWB 1		
201C	TELECOM CLOSET	SC	RB	GWB 1						
203	OUTDOOR BALCONY									
204	2-3 ENTRY	CPT 1	HD 2		GWB 1		GWB 1	ACT		
204A	STORAGE	CPT 1	RB 1	GWB 1	GWB 1	GWB 1	GWB 1	GWB 1		
205A	2-3 CLASSROOM	CPT 1	WD 2	GWB 1	GWB 1	GWB 1	GWB 1	ACT		
205B	2-3 CLASSROOM	CPT 1	WD 2	GWB 1	GWB 1	GWB 1	GWB 1	ACT		
205C	2-3 CLASSROOM	CPT 1	WD 2	GWB 1	GWB 1	GWB 1	GWB 1	ACT		
205D	2-3 CLASSROOM	CPT 1	WD 2	GWB 1	GWB 1	GWB 1	GWB 1	ACT		
205E	2-3 CLASSROOM	CPT 1	WD 2	GWB 1	GWB 1	GWB 1	GWB 1	ACT		
206	HC TOILET	PT 3	PT 2	CT 1	CT 1	CT 1	CT 1	GWB 1		
207	TOILET	PT 3	PT 2	CT 1	CT 1	CT 1	CT 1	GWB 1		
208	TOILET	PT 3	PT 2	CT 1	CT 1	CT 1	CT 1	GWB 1		
210	WASHROOM	PT 3	PT 2	GWB 1	GWB 1	GWB 1	GWB 1	ACT		
211	4-5 CLASSROOM	PT1/CPT 1	WD 2	GWB 1	GWB 1	GWB 1	GWB 1	ACT		
212	SPANISH OFFICE	CPT 1	WD 2	GWB 1	GWB 1	GWB 1	GWB 1	ACT		
213	TOILET	PT 1	PT 2	CT 1	CT 1	CT 1	CT 1	GWB 1		
214	TOILET	PT 1	PT 2	CT 1	CT 1	CT 1	CT 1	GWB 1		
215A	4-5 CLASSROOM	CPT 1	WD 2	GWB 1	GWB 1	GWB 1	GWB 1	ACT/GWB1		
215B	4-5 CLASSROOM	CPT 1	WD 2	GWB 1	GWB 1	GWB 1	GWB 1	ACT/GWB1		
215C	4-5 CLASSROOM	CPT 1	WD 2	GWB 1	GWB 1	GWB 1	GWB 1	ACT/GWB1		
215D	4-5 CLASSROOM	CPT 1	WD 2	GWB 1	GWB 1	GWB 1	GWB 1	ACT/GWB1		
215E	4-5 CLASSROOM	CPT 1	WD 2	GWB 1	GWB 1	GWB 1	GWB 1	ACT/GWB1		
215F	4-5 CLASSROOM	CPT 1	WD 2	GWB 1	GWB 1	GWB 1	GWB 1	ACT		
215G	4-5 CLASSROOM	CPT 1	WD 2	GWB 1	GWB 1	GWB 1	GWB 1	ACT		
219	TOILET	PT 3	PT 2	CT 1	CT 1	CT 1	CT 1	GWB 1		
S12	STAIR	PT 3	PT 2	GWB 1	GWB 1	GWB 1	GWB 1	GWB 1		
S32	STAIR	RT 1 / RT 2	WD 2	WD 3	GR 1	WD 3		GWB 1		
S42	STAIR	RT 1 / RT 2	RB	GWB 1	GWB 1	GWB 1	GWB 1	GWB 1		
S52	STAIR	RT 1 / RT 2	RB	GWB 1	GWB 1	GWB 1	GWB 1	GWB 1		

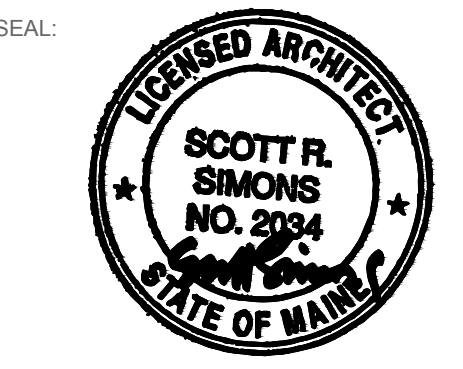
MATERIAL LEGEND			
CODE	MATERIAL	B.O.D. MANUFACTURER	FINISH / COLOR
GWB	PAINTED GWB	N/A	SEE FINISH SCHEDULE
WD 1	WOOD	N/A	CLEAR FINISH MAPLE HARDWOOD
WD 2	WOOD BASE	N/A	N/A - 1 x 4
WD 3	WOOD CEILING	N/A	PANELIZED CUSTOM LINEAR DOUG FIR CLNG
RB	RESILIENT BASE	ARMSTRONG	CLR PC SATIN LAQUER FINISH
ACT	ACOUSTIC CEILING TILE	ARMSTRONG	SILVER-GREY W/ SUPRAFINE SUSPENSION SYSTEM
CPT 1	CARPET ONE	INTERFACE	105373 GLEN WARP 105367 HEATHER WARP, 105369 HIGHLAND WARP
CPT 2	CARPET TWO	TANDUS CENTIVA	ENDIVE 00610
CPT 3	SHEET CARPET W/RUBBER NOSINGS		
FRP	FIBERGLASS REINFORCED PANEL		ON MR GWB WHITE/SMOOTH
PT 1	PORCELAIN TILE 1	DALTILE	PORTFOLIO 12" X 24"
PT 2	PORCELAIN TILE BASE/WALL	DALTILE	PORTFOLIO 2" X 2" MOSAIC
PT 3	PORCELAIN TILE 2-RECT.	DALTILE	HAUT MONDE 12" X 24"
PT 4	PORCELAIN TILE	ATLAS CONCORDE	DOVE GREY
RT 1	RUBBER TILE	JOHNSONITE	DOVE GREY
RT 2	RUBBER TREAD/RISER	JOHNSONITE	HAUT MONDE 12" X 24"
SC	SEALED CONCRETE		ELITE GREY
WOM	WALK-OFF MAT	MATS INC.	TRUST TITANIUM (ADD ALT. #2)
*	CUSTOM PATTERN TO BE FINALIZED BY ARCHITECT		TRUST TITANIUM

1 UPPER LEVEL FINISH PLAN  
SCALE: 1/8" = 1'-0"



PROJECT NAME:  
**WAYNFLEET  
LOWER SCHOOL  
ADDITION & RENOVATIONS**

WAYNFLEET SCHOOL  
360 SPRING STREET  
PORTLAND, MAINE 04102



THIS DRAWING IS THE PROPERTY OF SCOTT SIMONS ARCHITECTS (SSA) AND IS NOT TO BE COPIED OR REPRODUCED IN PART OR WHOLE 2016 © SCOTT SIMONS ARCHITECTS, LLC

REVISION:

NO.	DATE
1	DATE
2	DATE
3	DATE
4	DATE
5	DATE
6	DATE

DATE OF ISSUE: 12 JANUARY 2017  
PROJECT NUMBER: 2013-0050  
STATUS: 100% CONSTRUCTION DOCUMENTS ISSUED FOR BID

**UPPER LEVEL  
FINISH FLOOR PLAN**