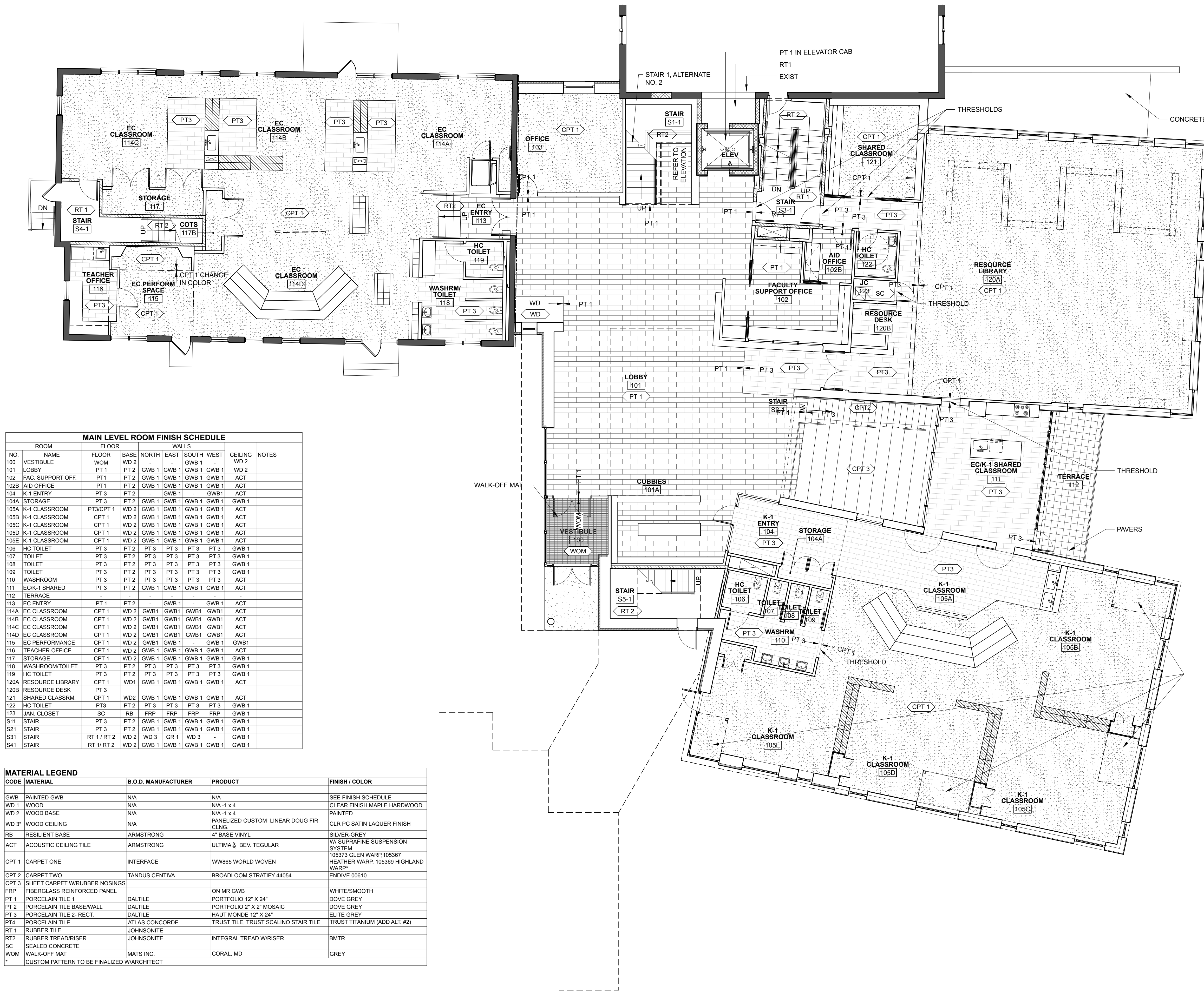


BASE BID  
AT LOBBY OPEN STAIR 1, PROVIDE RESILIENT  
STAIR TREADS AND RISERS WITH RUBBER TILE  
FLOORING AT LANDINGS

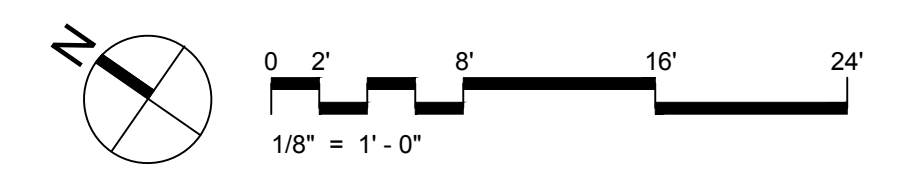
ALTERNATE NO. 2  
AT LOBBY OPEN STAIR 1, PROVIDE UNGLAZED  
PORCELAIN TILE TREADS WITH NOSING IN LIEU  
OF RUBBER



| MAIN LEVEL ROOM FINISH SCHEDULE |                   |             |      |       |       |       |       |         |       |
|---------------------------------|-------------------|-------------|------|-------|-------|-------|-------|---------|-------|
| NO.                             | ROOM NAME         | FLOOR       | BASE | NORTH | EAST  | SOUTH | WEST  | CEILING | NOTES |
| 100                             | VESTIBULE         | WOM         | WD 2 |       |       |       |       | WD 2    |       |
| 101                             | LOBBY             | PT 1        | PT 2 | GWB 1 | GWB 1 | GWB 1 | GWB 1 | WD 2    |       |
| 102                             | FAC. SUPPORT OFF. | PT 1        | PT 2 | GWB 1 | GWB 1 | GWB 1 | GWB 1 | ACT     |       |
| 102B                            | AID OFFICE        | PT 1        | PT 2 | GWB 1 | GWB 1 | GWB 1 | GWB 1 | ACT     |       |
| 104                             | K-1 ENTRY         | PT 3        | PT 2 | -     | GWB 1 | -     | GWB 1 | ACT     |       |
| 104A                            | STORAGE           | PT 3        | PT 2 | GWB 1 | GWB 1 | GWB 1 | GWB 1 | GWB 1   |       |
| 105A                            | K-1 CLASSROOM     | PT 3/CPT 1  | WD 2 | GWB 1 | GWB 1 | GWB 1 | GWB 1 | ACT     |       |
| 105B                            | K-1 CLASSROOM     | CPT 1       | WD 2 | GWB 1 | GWB 1 | GWB 1 | GWB 1 | ACT     |       |
| 105C                            | K-1 CLASSROOM     | CPT 1       | WD 2 | GWB 1 | GWB 1 | GWB 1 | GWB 1 | ACT     |       |
| 105D                            | K-1 CLASSROOM     | CPT 1       | WD 2 | GWB 1 | GWB 1 | GWB 1 | GWB 1 | ACT     |       |
| 105E                            | K-1 CLASSROOM     | CPT 1       | WD 2 | GWB 1 | GWB 1 | GWB 1 | GWB 1 | ACT     |       |
| 106                             | HC TOILET         | PT 3        | PT 2 | PT 3  | PT 3  | PT 3  | PT 3  | GWB 1   |       |
| 107                             | TOILET            | PT 3        | PT 2 | PT 3  | PT 3  | PT 3  | PT 3  | GWB 1   |       |
| 108                             | TOILET            | PT 3        | PT 2 | PT 3  | PT 3  | PT 3  | PT 3  | GWB 1   |       |
| 109                             | TOILET            | PT 3        | PT 2 | PT 3  | PT 3  | PT 3  | PT 3  | GWB 1   |       |
| 110                             | WASHROOM          | PT 3        | PT 2 | PT 3  | PT 3  | PT 3  | PT 3  | ACT     |       |
| 111                             | EC/K-1 SHARED     | PT 3        | PT 2 | GWB 1 | GWB 1 | GWB 1 | GWB 1 | ACT     |       |
| 112                             | TERRACE           | -           | -    | -     | -     | -     | -     | -       |       |
| 113                             | EC ENTRY          | PT 1        | PT 2 | -     | GWB 1 | -     | GWB 1 | ACT     |       |
| 114A                            | EC CLASSROOM      | CPT 1       | WD 2 | GWB 1 | GWB 1 | GWB 1 | GWB 1 | ACT     |       |
| 114B                            | EC CLASSROOM      | CPT 1       | WD 2 | GWB 1 | GWB 1 | GWB 1 | GWB 1 | ACT     |       |
| 114C                            | EC CLASSROOM      | CPT 1       | WD 2 | GWB 1 | GWB 1 | GWB 1 | GWB 1 | ACT     |       |
| 114D                            | EC CLASSROOM      | CPT 1       | WD 2 | GWB 1 | GWB 1 | GWB 1 | GWB 1 | ACT     |       |
| 115                             | EC PERFORMANCE    | CPT 1       | WD 2 | GWB 1 | GWB 1 | -     | GWB 1 | GWB 1   |       |
| 116                             | TEACHER OFFICE    | CPT 1       | WD 2 | GWB 1 | GWB 1 | GWB 1 | GWB 1 | ACT     |       |
| 117                             | STORAGE           | CPT 1       | WD 2 | GWB 1 | GWB 1 | GWB 1 | GWB 1 | GWB 1   |       |
| 118                             | WASHROOM/TOILET   | PT 3        | PT 2 | PT 3  | PT 3  | PT 3  | PT 3  | GWB 1   |       |
| 119                             | HC TOILET         | PT 3        | PT 2 | PT 3  | PT 3  | PT 3  | PT 3  | GWB 1   |       |
| 120A                            | RESOURCE LIBRARY  | CPT 1       | WD 1 | GWB 1 | GWB 1 | GWB 1 | GWB 1 | ACT     |       |
| 120B                            | RESOURCE DESK     | PT 3        |      |       |       |       |       |         |       |
| 121                             | SHARED CLASSRM.   | CPT 1       | WD 2 | GWB 1 | GWB 1 | GWB 1 | GWB 1 | ACT     |       |
| 122                             | HC TOILET         | PT 3        | PT 2 | PT 3  | PT 3  | PT 3  | PT 3  | GWB 1   |       |
| 123                             | JAN. CLOSET       | SC          | RB   | FRP   | FRP   | FRP   | FRP   | GWB 1   |       |
| S11                             | STAIR             | PT 3        | PT 2 | GWB 1 | GWB 1 | GWB 1 | GWB 1 | GWB 1   |       |
| S21                             | STAIR             | PT 3        | PT 2 | GWB 1 | GWB 1 | GWB 1 | GWB 1 | GWB 1   |       |
| S31                             | STAIR             | RT 1 / RT 2 | WD 2 | WD 3  | GR 1  | WD 3  | -     | GWB 1   |       |
| S41                             | STAIR             | RT 1 / RT 2 | WD 2 | GWB 1 | GWB 1 | GWB 1 | GWB 1 | GWB 1   |       |

| MATERIAL LEGEND |  |                     |  |                                    |
|-----------------|--|---------------------|--|------------------------------------|
| CODE            | MATERIAL                                   | B.O.D. MANUFACTURER | PRODUCT                                | FINISH / COLOR                     |
| GWB             | PAINTED GWB                                | N/A                 | N/A                                    | N/A                                |
| WD 1            | WOOD                                       | N/A                 | N/A - 1 x 4                            | CLEAR FINISH MAPLE HARDWOOD        |
| WD 2            | WOOD BASE                                  | N/A                 | N/A - 1 x 4                            | PAINTED                            |
| WD 3*           | WOOD CEILING                               | N/A                 | PANELIZED CUSTOM LINEAR DOUG FIR CLNG. | CLR PC SATIN LAQUER FINISH         |
| RB              | RESILIENT BASE                             | ARMSTRONG           | 4" BASE VINYL                          | SILVER GREY                        |
| ACT             | ACOUSTIC CEILING TILE                      | ARMSTRONG           | ULTIMA 6 BEV. TEGULAR                  | W/ SUPRAFINE SUSPENSION SYSTEM     |
| CPT 1           | CARPET ONE                                 | INTERFACE           | WWW85 WORLD WOVEN                      | 105373 GLEN WARP 105367            |
| CPT 2           | CARPET TWO                                 | TANDUS CENTIVA      | BROADLOOM STRATIFY 44054               | HEATHER WARP, 105369 HIGHLAND WARP |
| CPT 3           | SHEET CARPET W/RUBBER NOSINGS              |                     |  | ENDIVE 00810                       |
| FRP             | FIBERGLASS REINFORCED PANEL                |                     | ON MR GWB                              | WHITE/SMOOTH                       |
| PT 1            | PORCELAIN TILE 1                           | DALTILE             | PORTFOLIO 12" X 24"                    | DOVE GREY                          |
| PT 2            | PORCELAIN TILE BASE/WALL                   | DALTILE             | PORTFOLIO 2" X 2" MOSAIC               | DOVE GREY                          |
| PT 3            | PORCELAIN TILE 2- RECT.                    | DALTILE             | HAUT MONDE 12" X 24"                   | ELITE GREY                         |
| PT 4            | PORCELAIN TILE                             | ATLAS CONCORDE      | TRUST TILE, TRUST SCALINO STAIR TILE   | TRUST TITANIUM (ADD ALT. #2)       |
| RT 1            | RUBBER TILE                                | JOHNSONITE          |  |                                    |
| RT 2            | RUBBER TREAD/RISER                         | JOHNSONITE          | INTEGRAL TREAD WRISER                  | BMTR                               |
| SC              | SEALED CONCRETE                            |                     |  |                                    |
| WOM             | WALK-OFF MAT                               | MATS INC.           | CORAL MD                               | GREY                               |
| *               | CUSTOM PATTERN TO BE FINALIZED W/ARCHITECT |                     |  |                                    |

1 MAIN LEVEL FINISH PLAN  
SCALE: 1/8" = 1'-0"



PROJECT NAME:  
**WAYNFLETE  
LOWER SCHOOL  
ADDITION & RENOVATIONS**

WAYNFLETE SCHOOL  
360 SPRING STREET  
PORTLAND, MAINE 04102



THIS DRAWING IS THE PROPERTY OF SCOTT SIMONS ARCHITECTS (SSA) AND IS NOT TO BE COPIED OR REPRODUCED IN PART OR WHOLE 2016 © SCOTT SIMONS ARCHITECTS, LLC

REVISION:

|   |      |
|---|------|
| 1 | DATE |
| 2 | DATE |
| 3 | DATE |
| 4 | DATE |
| 5 | DATE |
| 6 | DATE |

DATE OF ISSUE: 12 JANUARY 2017  
PROJECT NUMBER: 2013-0050  
STATUS: 100% CONSTRUCTION DOCUMENTS ISSUED FOR BID

**MAIN LEVEL  
FINISH FLOOR PLAN**