



**GENERAL NOTES**

- REFER TO THIS PLAN FOR DIMENSIONS AND LOCATIONS OF ALL CEILING MOUNTED ITEMS. REFER TO ELECTRICAL AND MECHANICAL DRAWINGS FOR QUANTITIES AND PRODUCT DESCRIPTIONS.
- DIMENSIONS SHOWN ARE TO CENTERLINES OF SPECIFIC ITEMS. LINEAR LAYOUTS OF ITEMS NOT DIMENSIONED ARE REQUIRED TO BE EQUALLY SPACED ON CENTER WITHIN A DEFINED AREA.
- COORDINATE ALL INSTALLATIONS WITH FIRE PROTECTION SYSTEMS.
- PROVIDE FLUSH, PAINTABLE ACCESS PANELS AS NECESSARY IN HARD CEILINGS FOR ACCESS TO MECHANICAL SYSTEMS.
- IN GWB CEILINGS PROVIDE FLUSH ACCESS PANELS AS NECESSARY TO ACCESS VALVE, SERVICE POINTS, SPRINKLER VALVES, ETC.
- FINAL LAYOUT OF P1, R5, S1 FIXTURES TO BE VERIFIED W/ARCHITECT IN FIELD

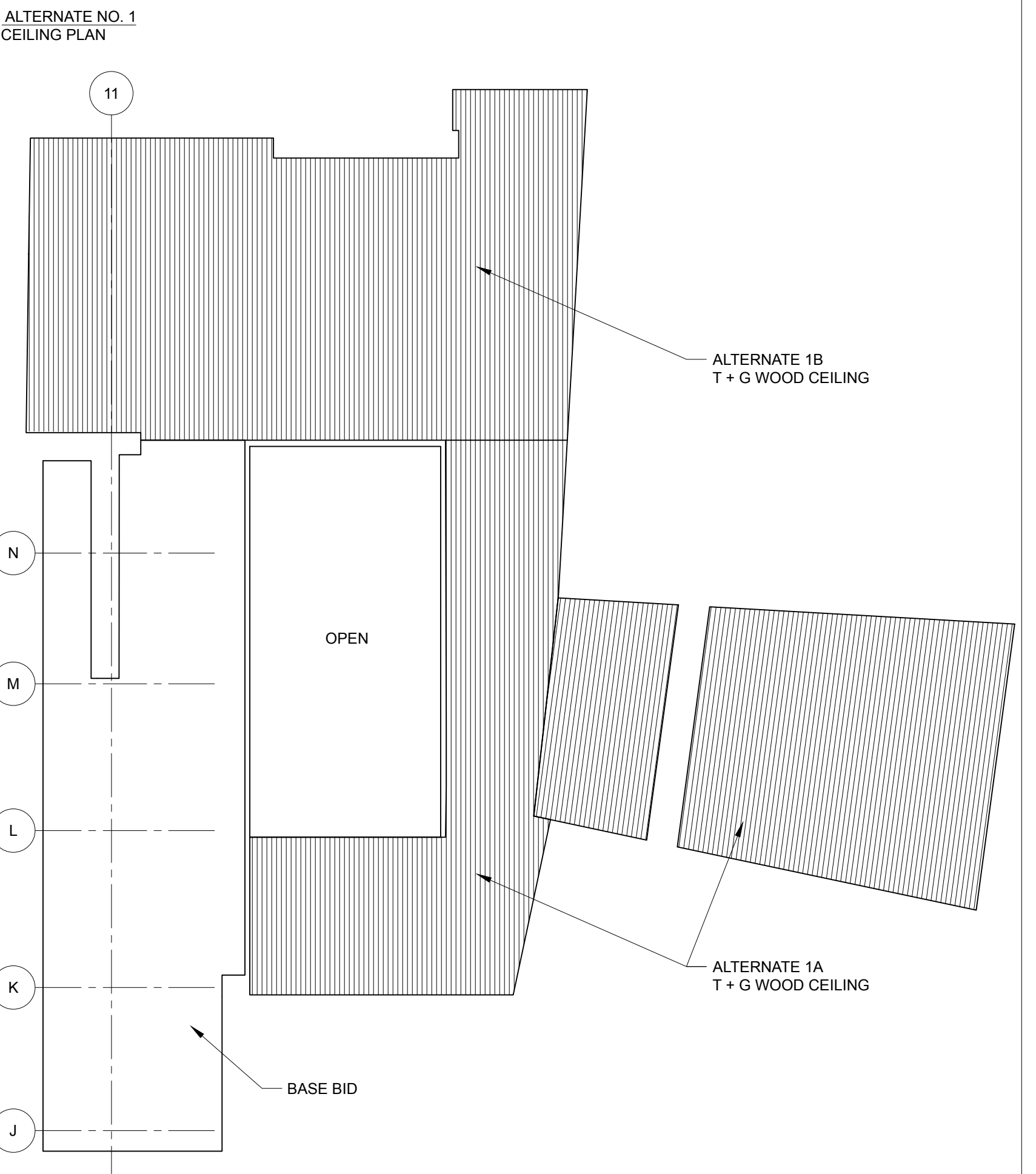
**LIGHT FIXTURE KEY**

- P1 - 19" PENDANT
- P2 - 4' LINEAR, PENDANT
- R1 - 6" RECESSED, WALL WASHER
- R2 - 6" RECESSED, DOWN LIGHT
- R3 - 8' LINEAR, RECESSED
- R4 - 4' LINEAR, RECESSED
- R5 - 19" RECESSED
- R6 - 6" EXTERIOR RECESSED, DOWNLIGHT
- R7 - 6" EXTERIOR RECESSED, WALL WASHER
- S1 - 19" SURFACE
- U1 - 4' UTILITY
- W1 - 4' LINEAR, WALL
- W2 - 9" WALL
- C1 - UNDERCABINET STRIP LIGHT, SWITCHED
- E1 - EXIT LIGHT

**CEILING TYPES KEY**

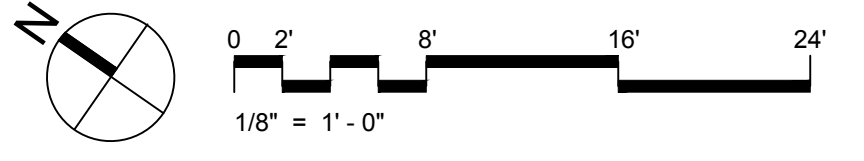
- GYPSUM
- T + G CEILING
- 2x4' ACOUSTICAL CEILING TILE

**2 FIRE SHUTTER END WALL**  
SCALE: 1" = 1'-0"



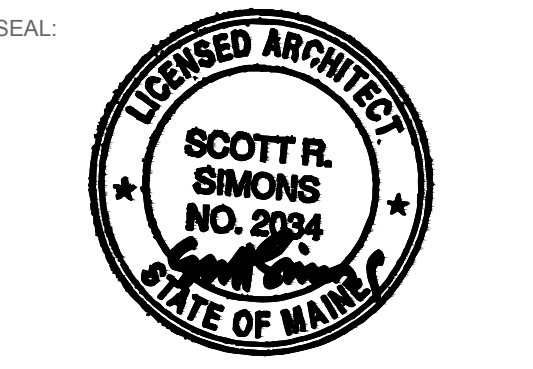
**1 MAIN LEVEL RCP**  
SCALE: 1/8" = 1'-0"

NOTE: REFERENCE SHEET MH102 FOR CEILING MECH. EQUIPMENT



PROJECT NAME:  
**WAYNFLETE LOWER SCHOOL ADDITION & RENOVATIONS**

WAYNFLETE SCHOOL  
360 SPRING STREET  
PORTLAND, MAINE 04102



THIS DRAWING IS THE PROPERTY OF SCOTT SIMONS ARCHITECTS (SSA) AND IS NOT TO BE COPIED OR REPRODUCED IN PART OR WHOLE 2016 © SCOTT SIMONS ARCHITECTS, LLC

REVISION:

NO.	DATE
1	DATE
2	DATE
3	DATE
4	DATE
5	DATE
6	DATE

DATE OF ISSUE: 12 JANUARY 2017  
PROJECT NUMBER: 2013-0050  
STATUS: 100% CONSTRUCTION DOCUMENTS ISSUED FOR BID

**MAIN LEVEL REFLECTED CEILING PLAN**

**A132**