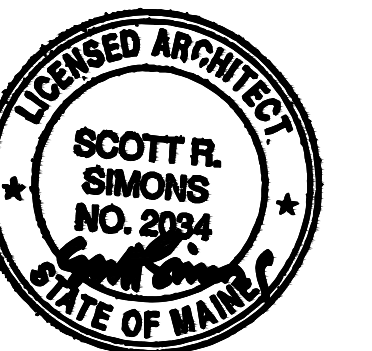


PROJECT NAME:  
**WAYNFLEET  
LOWER SCHOOL  
ADDITION & RENOVATIONS**

WAYNFLEET SCHOOL  
360 SPRING STREET  
PORTLAND, MAINE 04102

SEAL:



THIS DRAWING IS THE PROPERTY OF SCOTT SIMONS ARCHITECTS (SSA) AND IS NOT TO BE COPIED OR REPRODUCED IN PART OR WHOLE. 2016 © SCOTT SIMONS ARCHITECTS, LLC

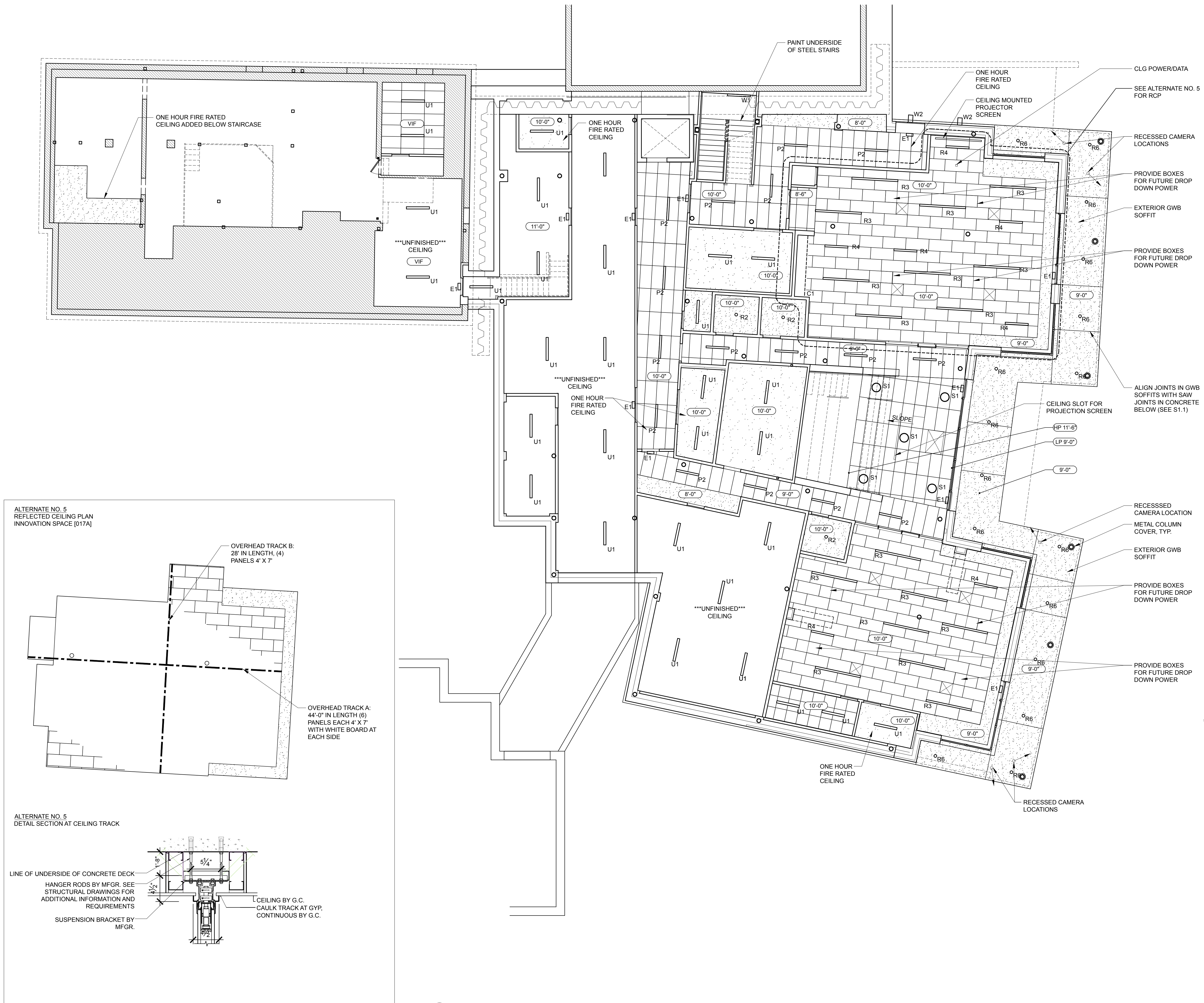
REVISION:

NO.	DATE
1	DATE
2	DATE
3	DATE
4	DATE
5	DATE
6	DATE

DATE OF ISSUE: 12 JANUARY 2017  
PROJECT NUMBER: 2013-0050  
STATUS: 100% CONSTRUCTION DOCUMENTS ISSUED FOR BID

**LOWER LEVEL  
REFLECTED  
CEILING PLAN**

**A131**



**GENERAL NOTES**

- REFER TO THIS PLAN FOR DIMENSIONS AND LOCATIONS OF ALL CEILING MOUNTED ITEMS. REFER TO ELECTRICAL AND MECHANICAL DRAWINGS FOR QUANTITIES AND PRODUCT DESCRIPTIONS.
- DIMENSIONS SHOWN ARE TO CENTERLINES OF SPECIFIC ITEMS. LINEAR LAYOUTS OF ITEMS NOT DIMENSIONED ARE REQUIRED TO BE EQUALLY SPACED ON CENTER WITHIN A DEFINED AREA.
- COORDINATE ALL INSTALLATIONS WITH FIRE PROTECTION SYSTEMS.
- PROVIDE FLUSH, PAINTABLE ACCESS PANELS AS NECESSARY IN HARD CEILINGS FOR ACCESS TO MECHANICAL SYSTEMS.
- IN GWB CEILINGS PROVIDE FLUSH ACCESS PANELS AS NECESSARY TO ACCESS VALVE, SERVICE POINTS, SPRINKLER VALVES, ETC.
- FINAL LAYOUT OF P1, R5, S1 FIXTURES TO BE VERIFIED W/ARCHITECT IN FIELD

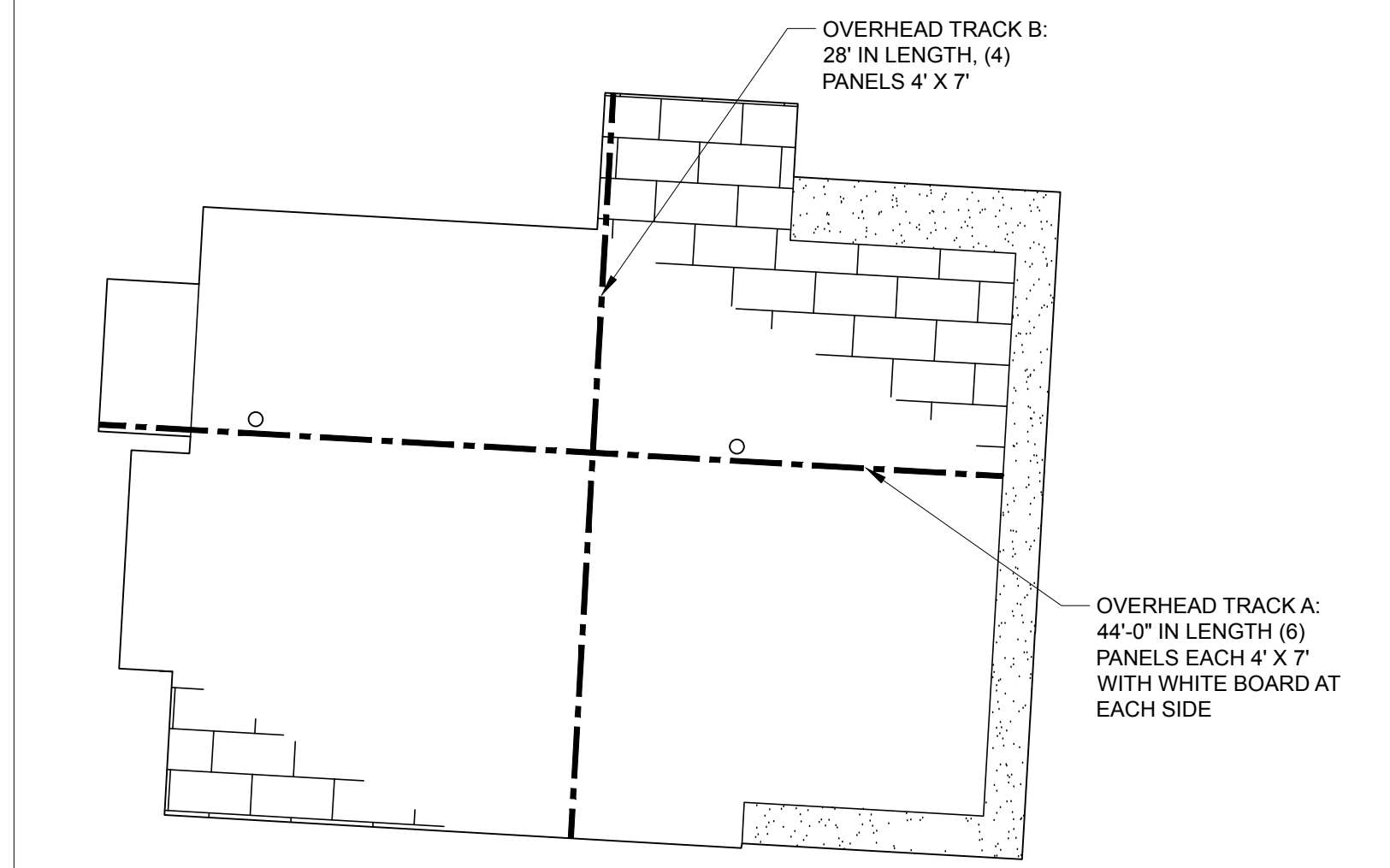
**LIGHT FIXTURE KEY**

- P1 - 19" PENDANT
- P2 - 4' LINEAR, PENDANT
- R1 - 6" RECESSED, WALL WASHER
- R2 - 6" RECESSED, DOWN LIGHT
- R3 - 8' LINEAR, RECESSED
- R4 - 4' LINEAR, RECESSED
- R5 - 19" RECESSED
- R6 - 6" EXTERIOR RECESSED, DOWNLIGHT
- R7 - 6" EXTERIOR RECESSED, WALL WASHER
- S1 - 19" SURFACE
- U1 - 4' UTILITY
- W1 - 4' LINEAR, WALL
- W2 - 9" WALL
- C1 - UNDERCABINET STRIP LIGHT, SWITCHED
- E1 - EXIT LIGHT

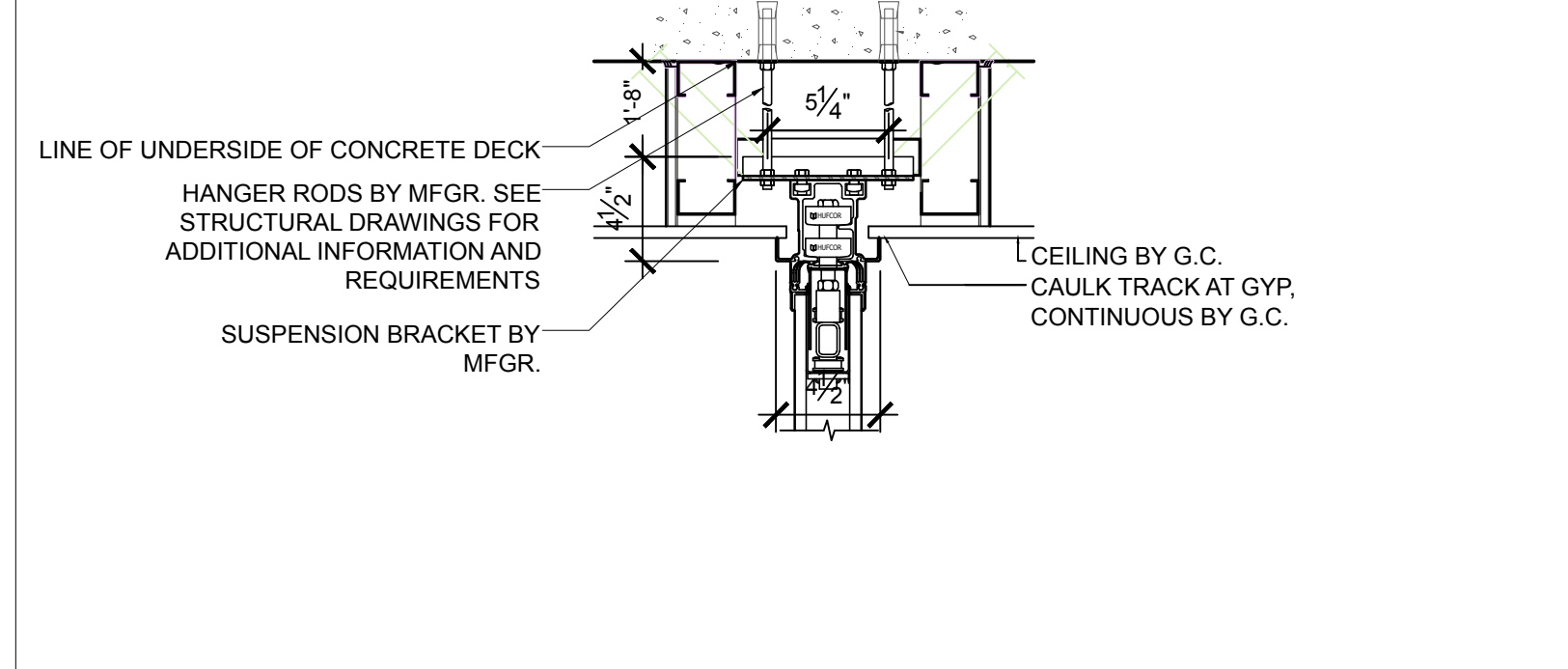
**CEILING TYPES KEY**

- GYPSUM
- T + G CEILING
- 2x4' ACOUSTICAL CEILING TILE

ALTERNATE NO. 5  
REFLECTED CEILING PLAN  
INNOVATION SPACE [017A]



ALTERNATE NO. 5  
DETAIL SECTION AT CEILING TRACK



**1 LOWER LEVEL RCP**  
SCALE: 1/8" = 1'-0"

NOTE: SEE SHEET MH101 FOR CEILING MECH.

