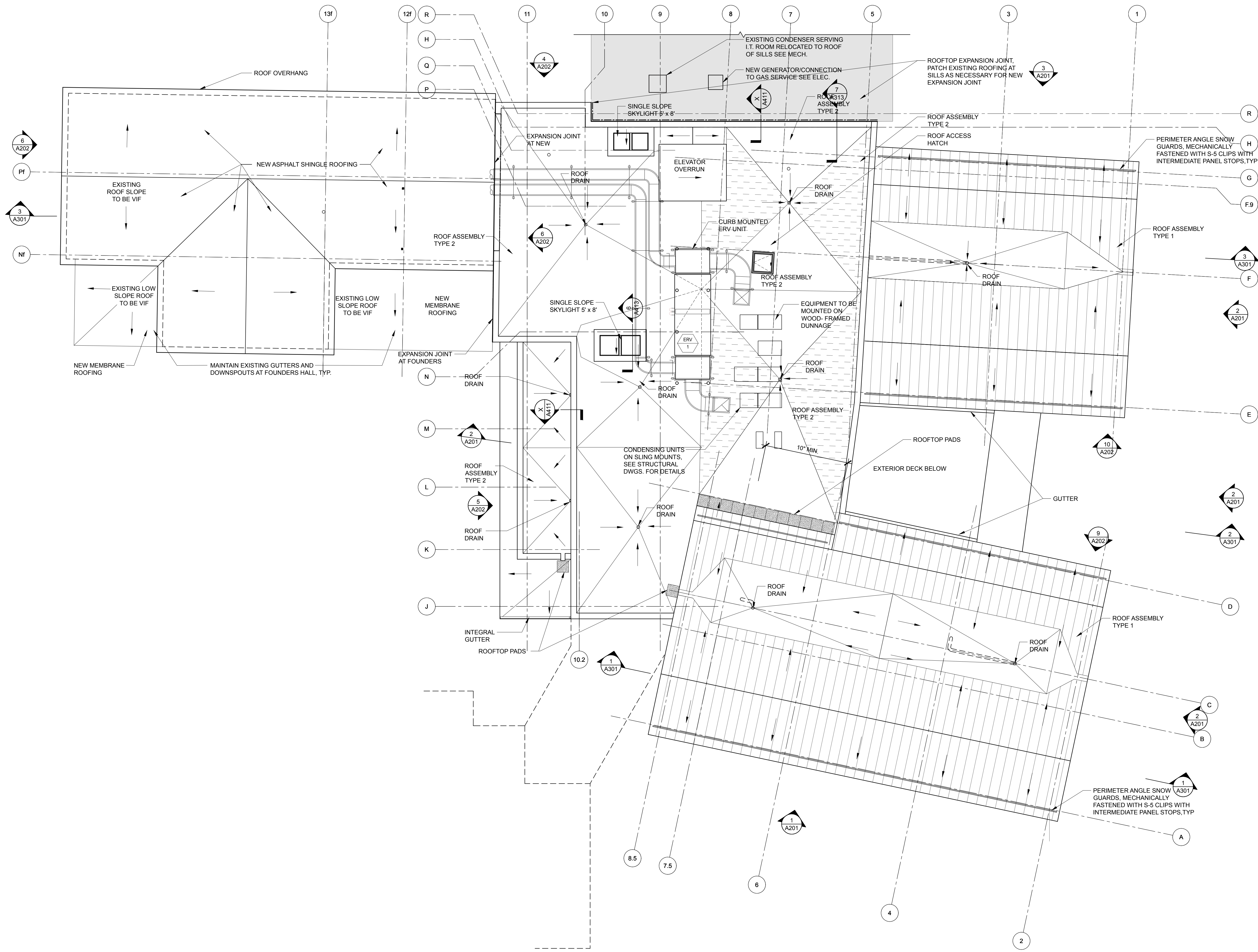
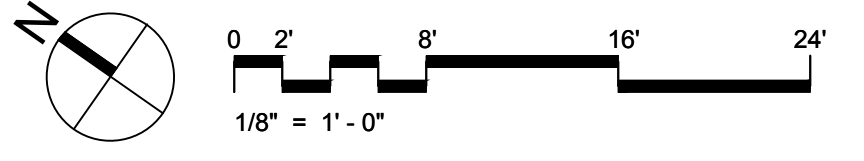


- ROOF ASSEMBLY #1 (U-MAX - 0.0156)**
- EXTERIOR
 - STANDING SEAM METAL PANEL
 - WEATHER BARRIER
 - INSULATED VENTED NAILBOARD (R-5.7)
 - ADHERED BARRIER
 - 10/2" POLYISO SIP (R-59)
 - METAL DECK
 - MINERAL FIBER ACOUSTIC INSULATION
 - FINISH CEILING SEE RCP
 - INTERIOR

- ROOF ASSEMBLY #2 (U-MAX - 0.0161)**
- EXTERIOR
 - ADHERED MEMBRANE ROOFING
 - COVER BOARD
 - TAPERED INSULATION
 - RIGID INSULATION (R-62)
 - STEEL ROOF DECK
 - FINISH CEILING
 - INTERIOR



1 ROOF PLAN
SCALE: 1/8" = 1'-0"



PROJECT NAME:
WAYNFLETE LOWER SCHOOL
ADDITION & RENOVATIONS

WAYNFLETE SCHOOL
360 SPRING STREET
PORTLAND, MAINE 04102



THIS DRAWING IS THE PROPERTY OF SCOTT SIMONS ARCHITECTS (SSA) AND IS NOT TO BE COPIED OR REPRODUCED IN PART OR WHOLE 2016 © SCOTT SIMONS ARCHITECTS, LLC

REVISION:

1	DATE
2	DATE
3	DATE
4	DATE
5	DATE
6	DATE

DATE OF ISSUE: 12 JANUARY 2017
PROJECT NUMBER: 2013-0050
STATUS: 100% CONSTRUCTION DOCUMENTS ISSUED FOR BID

ROOF PLAN