



THIS DRAWING IS THE PROPERTY OF SCOTT SIMONS ARCHITECTS (SSA) AND IS NOT TO BE COPIED OR REPRODUCED IN PART OR WHOLE 2016 © SCOTT SIMONS ARCHITECTS, LLC

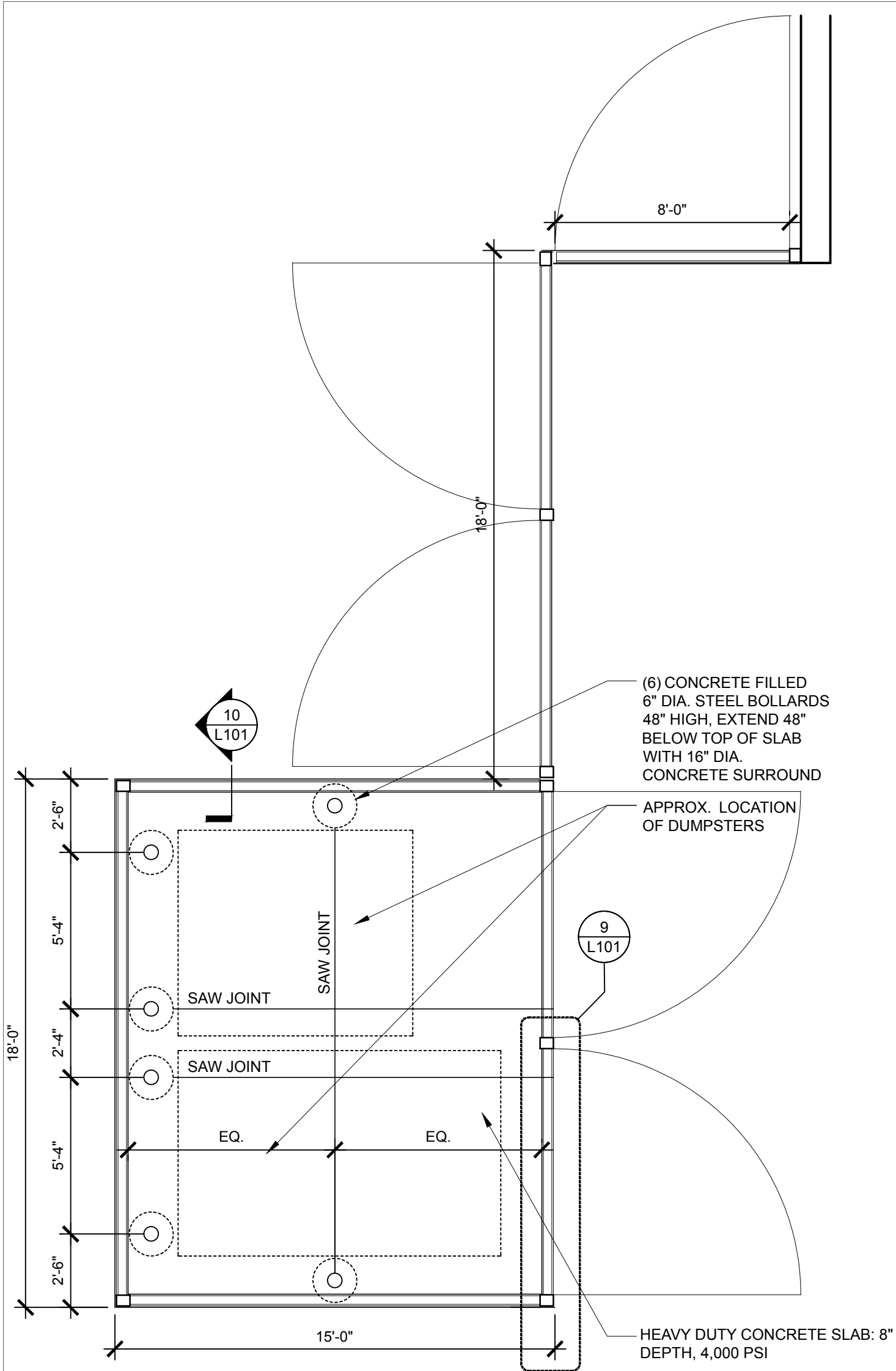
REVISION:

1	DATE
2	DATE
3	DATE
4	DATE
5	DATE
6	DATE

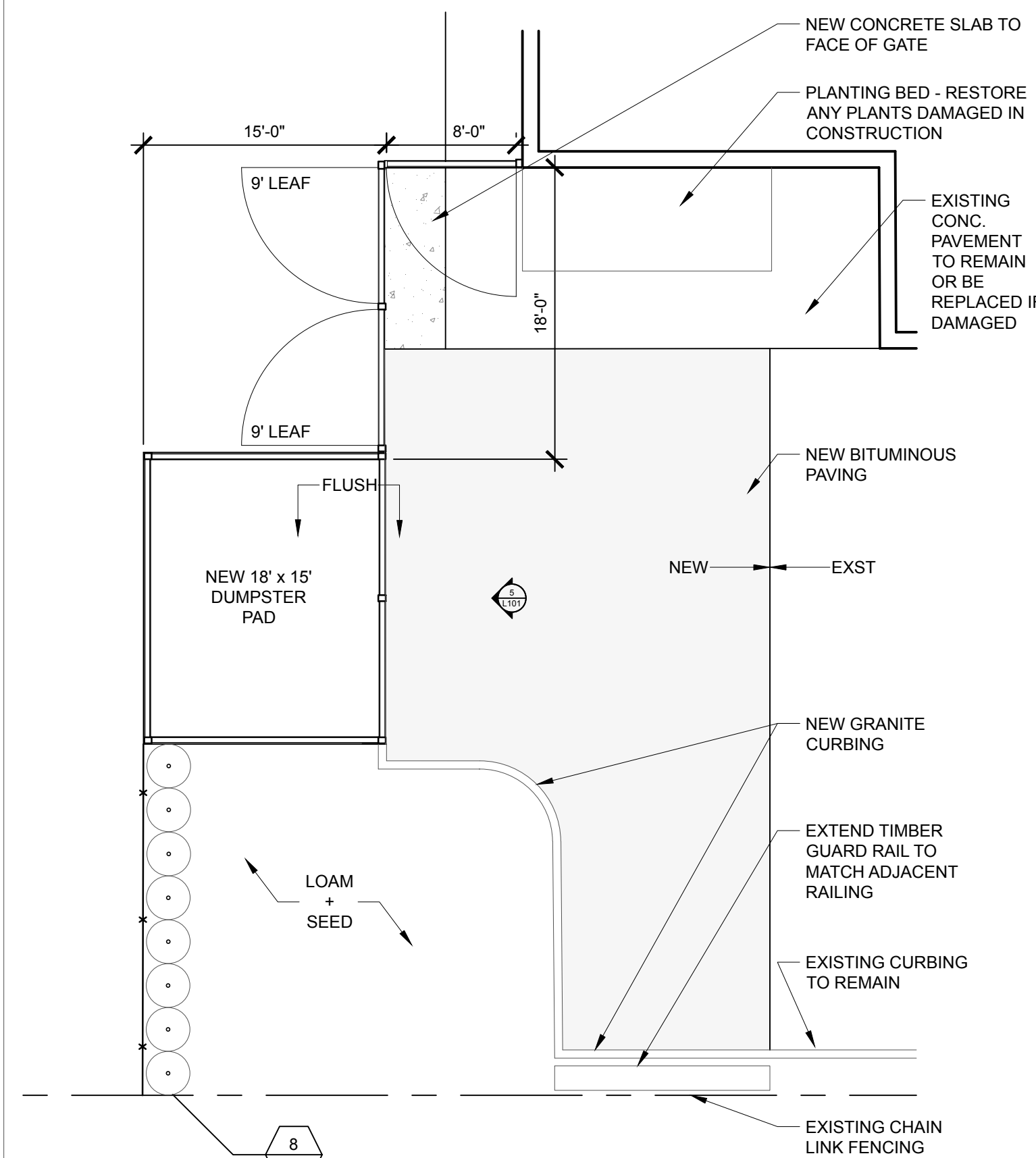
DATE OF ISSUE: 12 JANUARY 2017  
PROJECT NUMBER: 2013-0050  
STATUS: 100% CONSTRUCTION DOCUMENTS ISSUED FOR BID

**LANDSCAPE  
DETAILS**

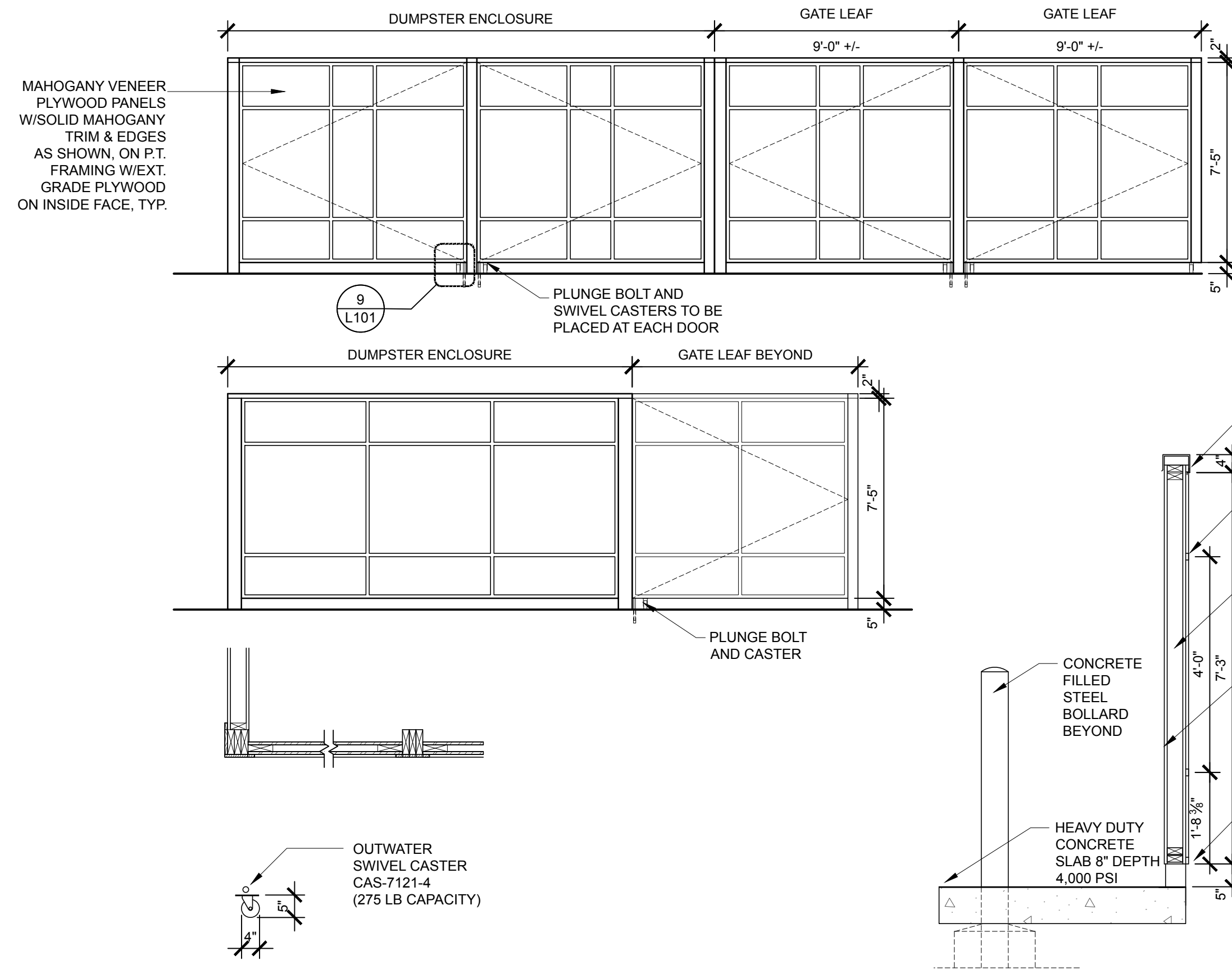
**L-101**



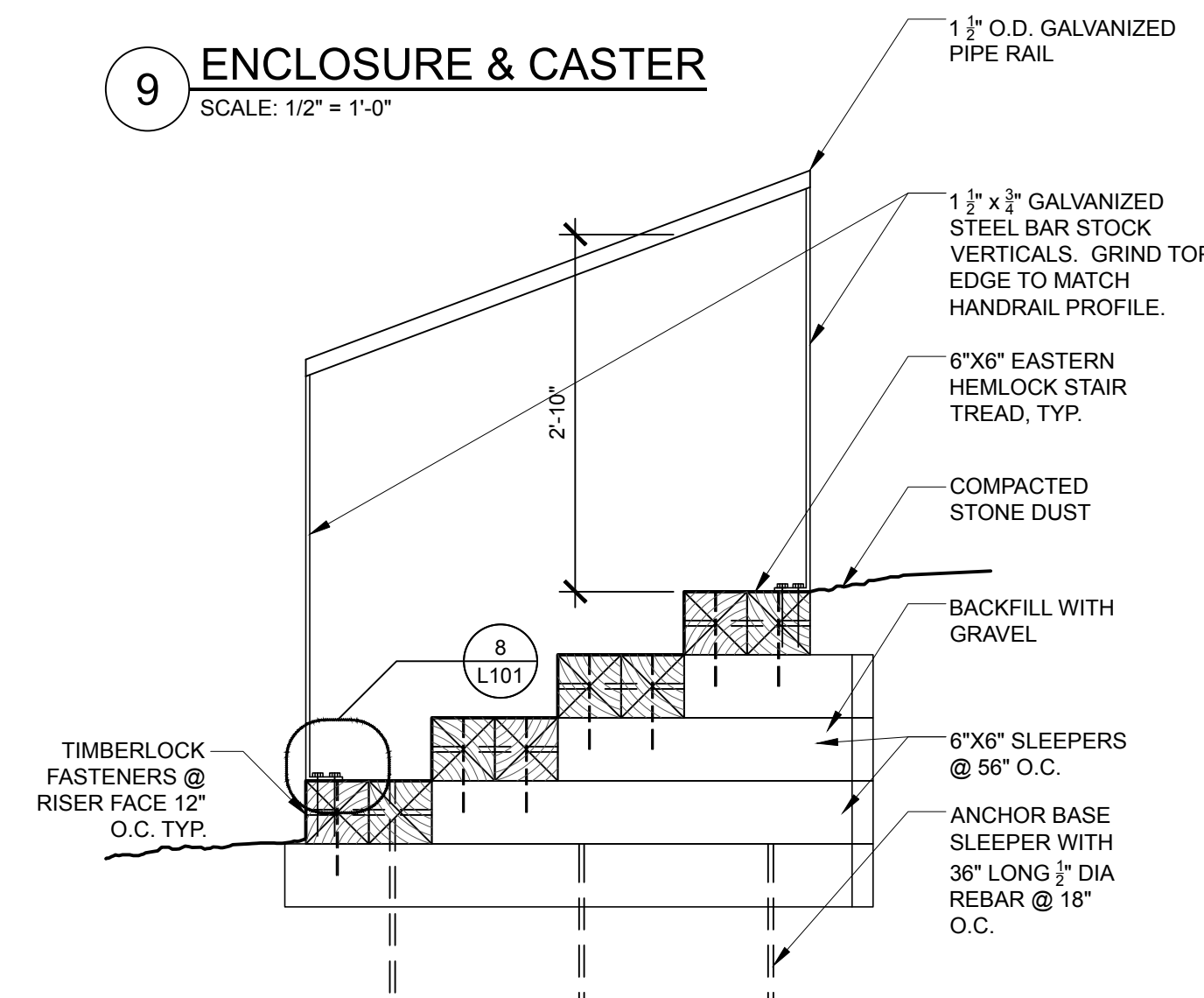
**5 DUMPSTER ENCLOSURE PLAN & ELEVATIONS**  
SCALE: 1/4" = 1'-0"



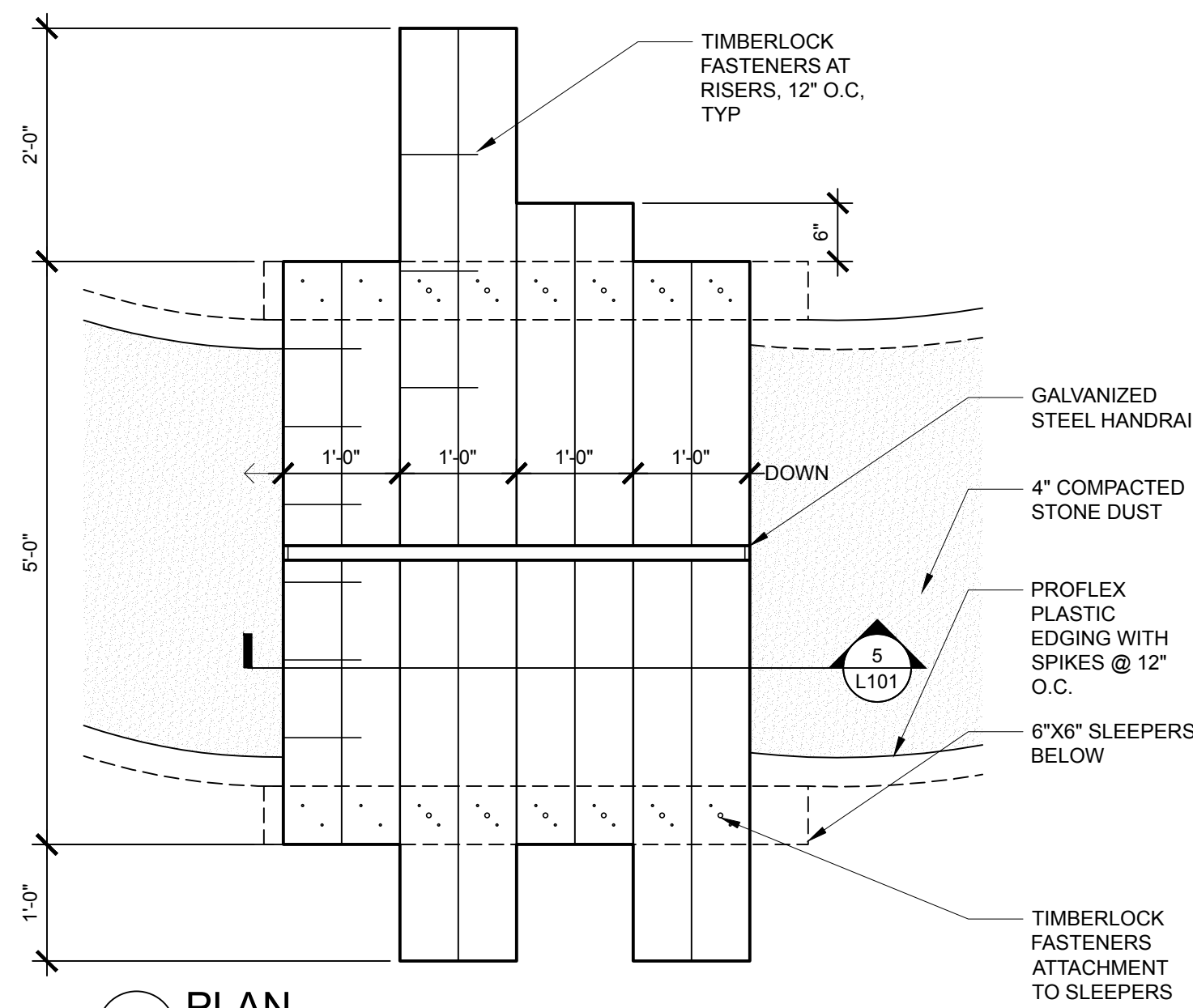
**4 DUMPSTER ENCLOSURE PLAN**  
SCALE: 1/8" = 1'-0"



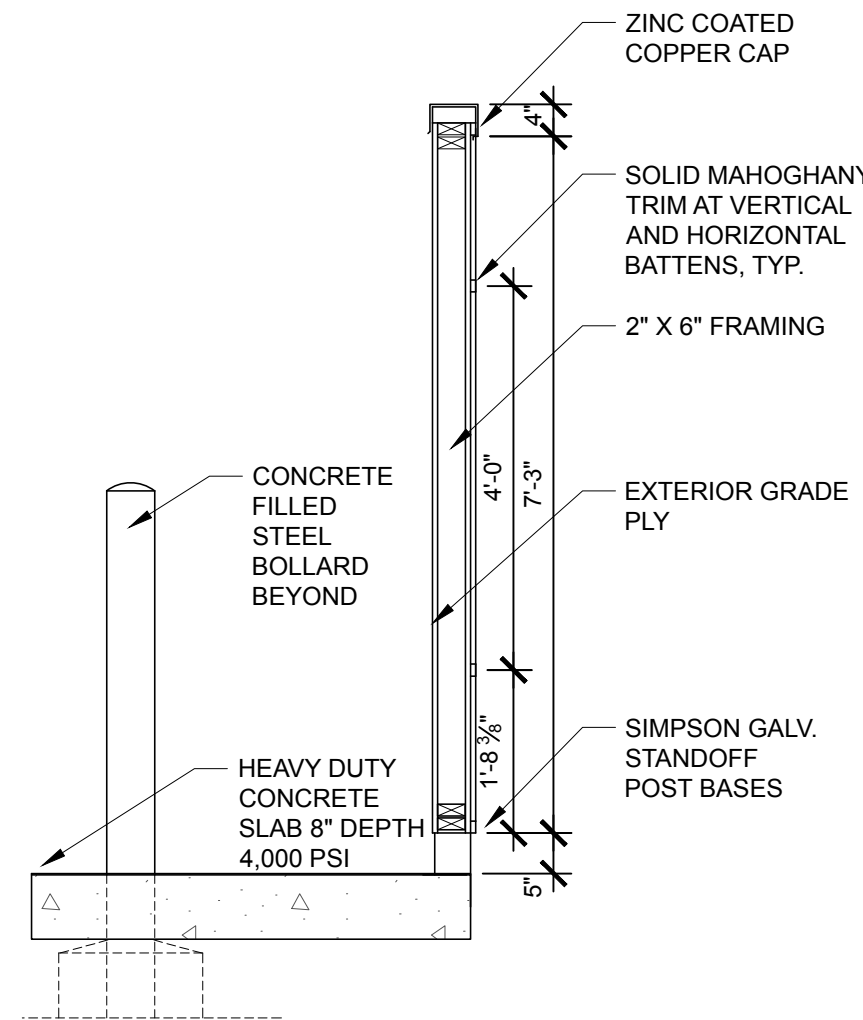
**9 ENCLOSURE & CASTER**  
SCALE: 1/2" = 1'-0"



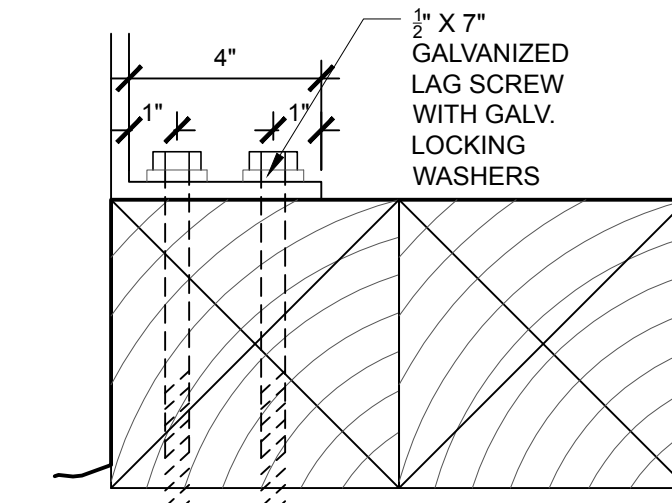
**6 SECTION**  
SCALE: 3/4" = 1'-0" @ 1\"/>



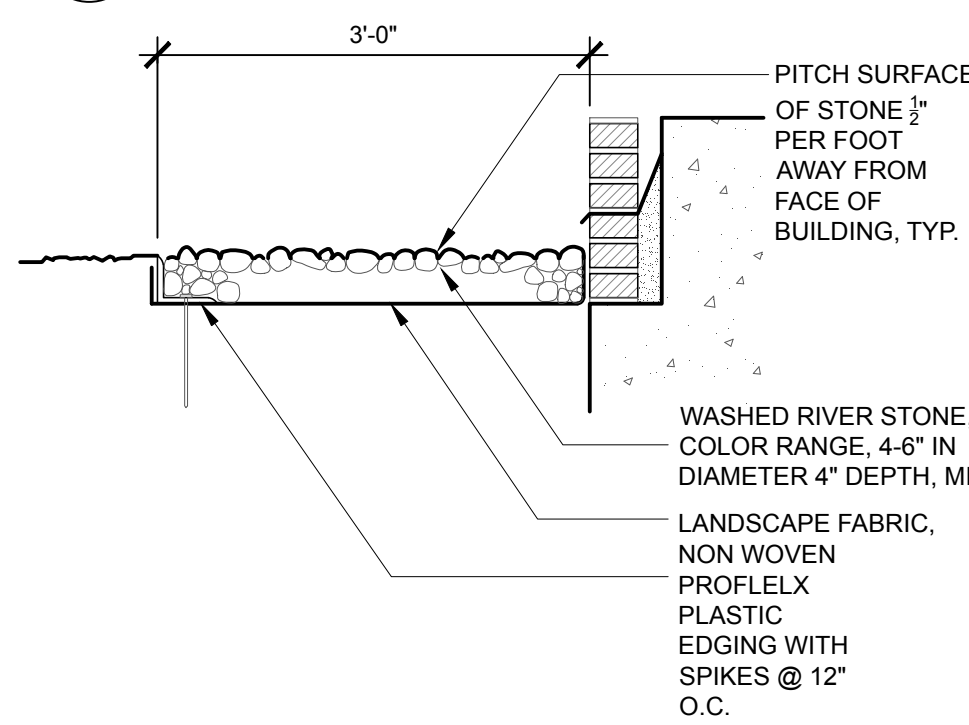
**3 PLAN**  
SCALE: 3/4" = 1'-0"



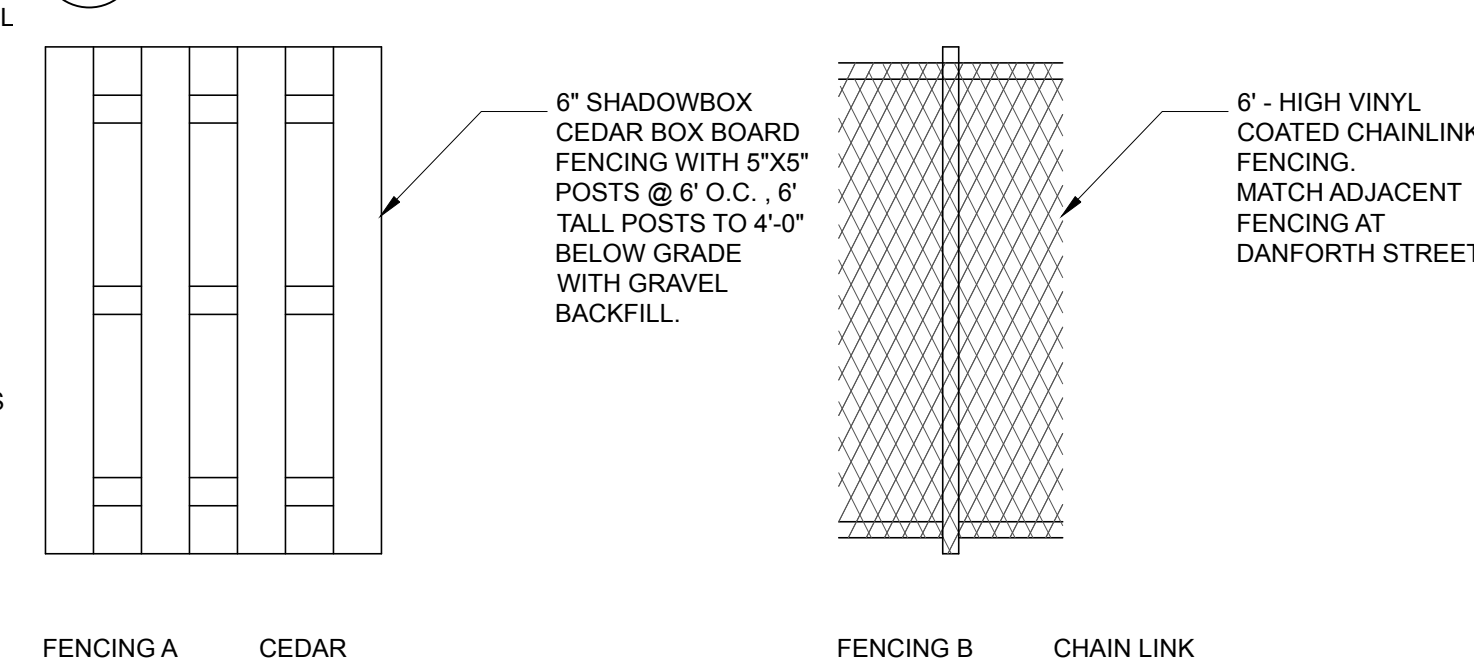
**10 DUMPSTER ENCLOSURE WALL SECTION**  
SCALE: 1/2" = 1'-0"



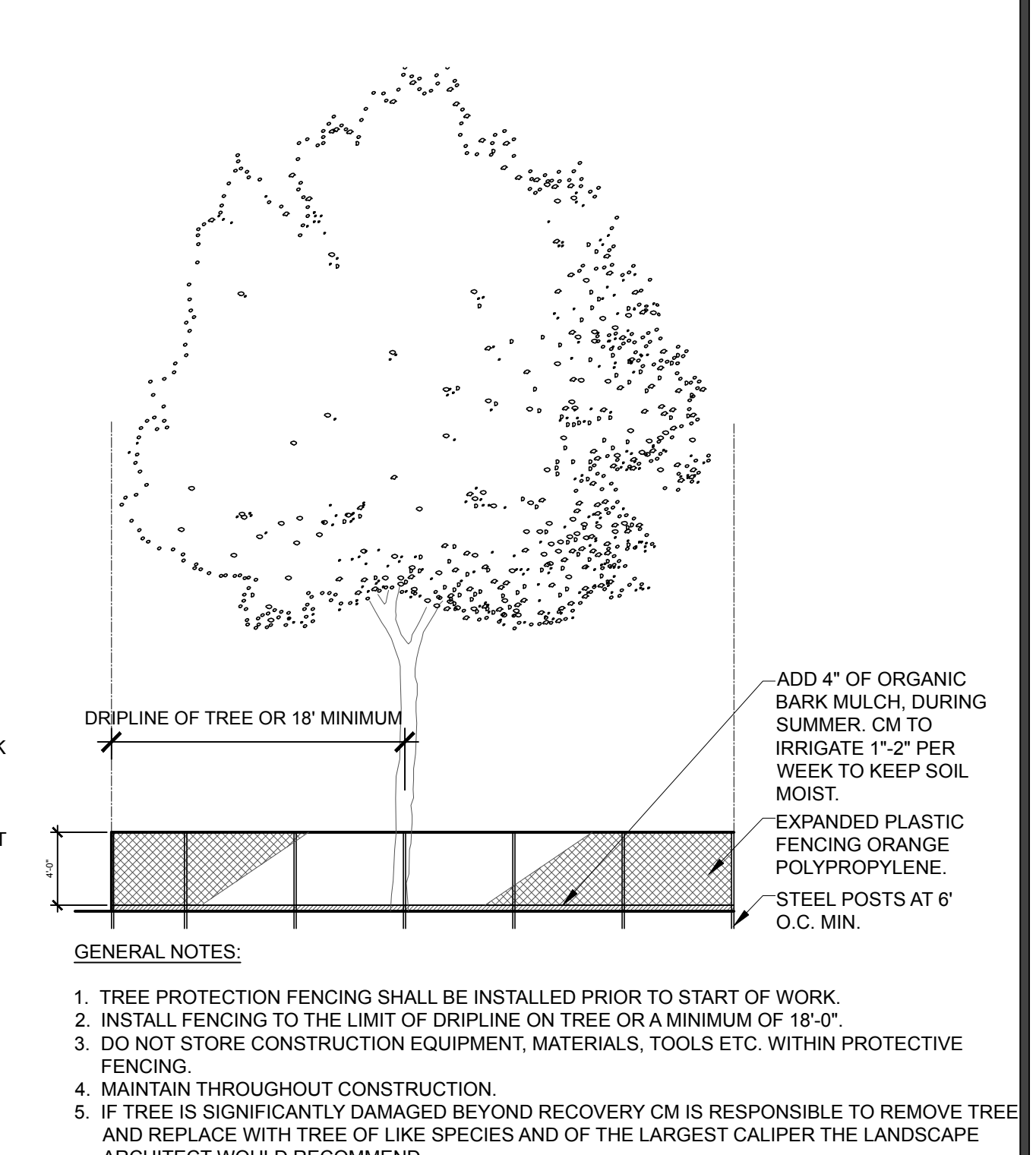
**8 DETAIL**  
SCALE: 3" = 1'-0"



**7 STONE DRIP EDGE**  
SCALE: 3/4" = 1'-0"



**2 FENCING TYPE**  
N.T.S.



**1 TREE PROTECTION DETAIL**  
N.T.S.

**GENERAL NOTES:**

1. TREE PROTECTION FENCING SHALL BE INSTALLED PRIOR TO START OF WORK.
2. INSTALL FENCING TO THE LIMIT OF DRIFLINE ON TREE OR A MINIMUM OF 18'-0".
3. DO NOT STORE CONSTRUCTION EQUIPMENT, MATERIALS, TOOLS ETC. WITHIN PROTECTIVE FENCING.
4. MAINTAIN THROUGHOUT CONSTRUCTION.
5. IF TREE IS SIGNIFICANTLY DAMAGED BEYOND RECOVERY CM IS RESPONSIBLE TO REMOVE TREE AND REPLACE WITH TREE OF LIKE SPECIES AND OF THE LARGEST CALIPER THE LANDSCAPE ARCHITECT WOULD RECOMMEND.