

**Allied Engineering**  
Structural Mechanical  
Electrical Commissioning

160 Veranda Street  
Portland, Maine 04103  
T: 207.221.2260  
F: 207.221.2266  
Web: www.allied-eng.com

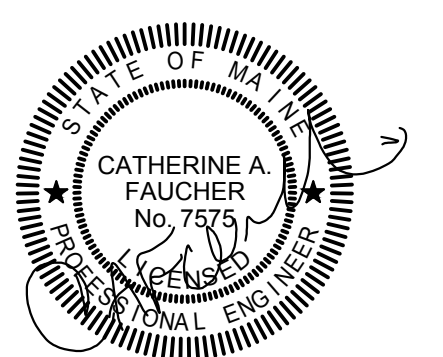
Allied Project No: 15051  
Cad File: 15051E.dwg

PROJECT NAME:

**WAYNFLETE  
LOWER SCHOOL**  
ADDITION & RENOVATIONS

WAYNFLETE SCHOOL  
360 SPRING STREET  
PORTLAND, MAINE 04102

SEAL:



THIS DRAWING IS THE PROPERTY OF SCOTT SIMONS ARCHITECTS (SSA) AND IS NOT TO BE COPIED OR REPRODUCED IN PART OR WHOLE. 2015 © SCOTT SIMONS ARCHITECTS, LLC

REVISION:

NO.	DATE
1	DATE
2	DATE
3	DATE
4	DATE
5	DATE
6	DATE

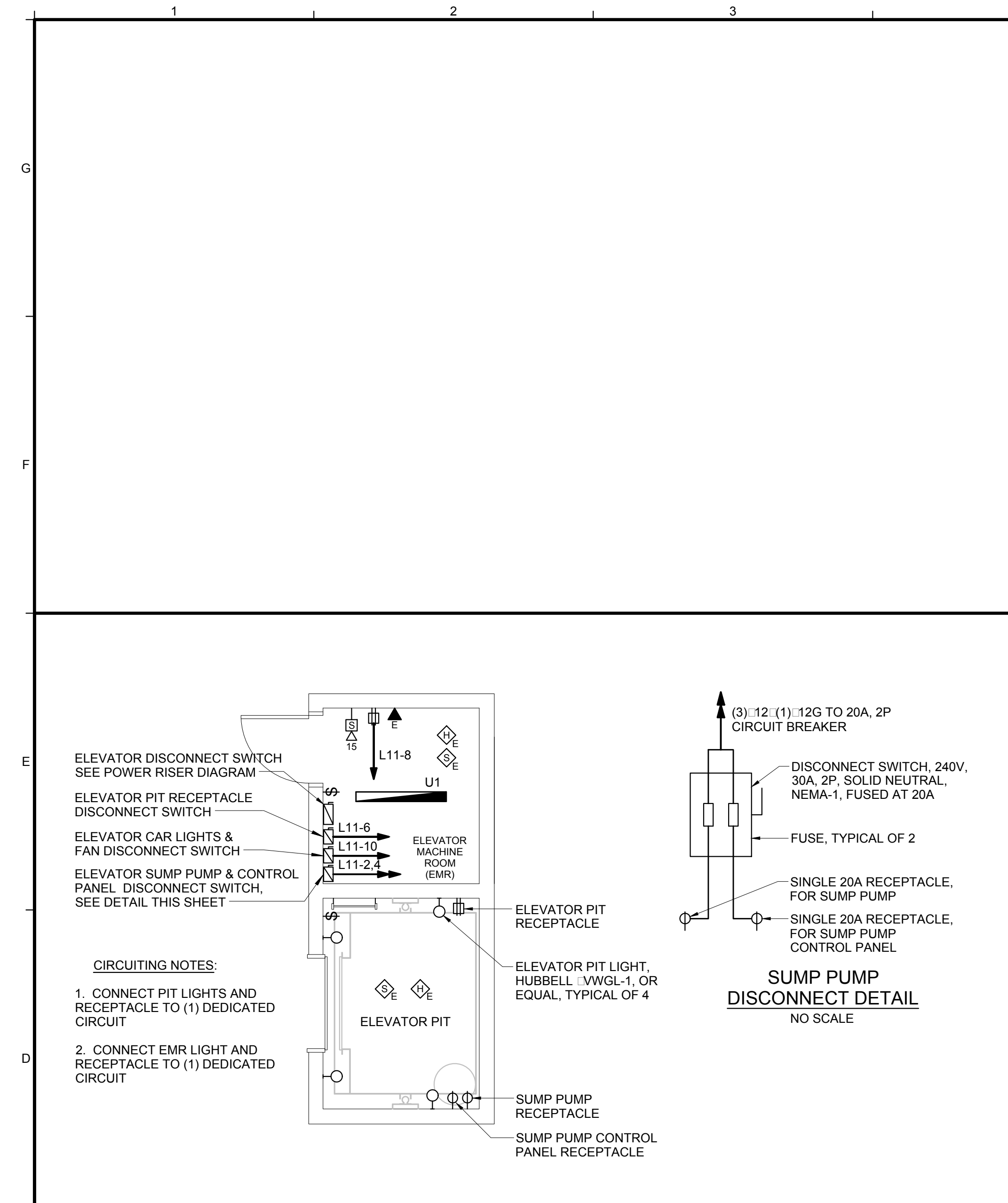
DATE OF ISSUE: 12 JANUARY 2017

PROJECT NUMBER: 2013-0050

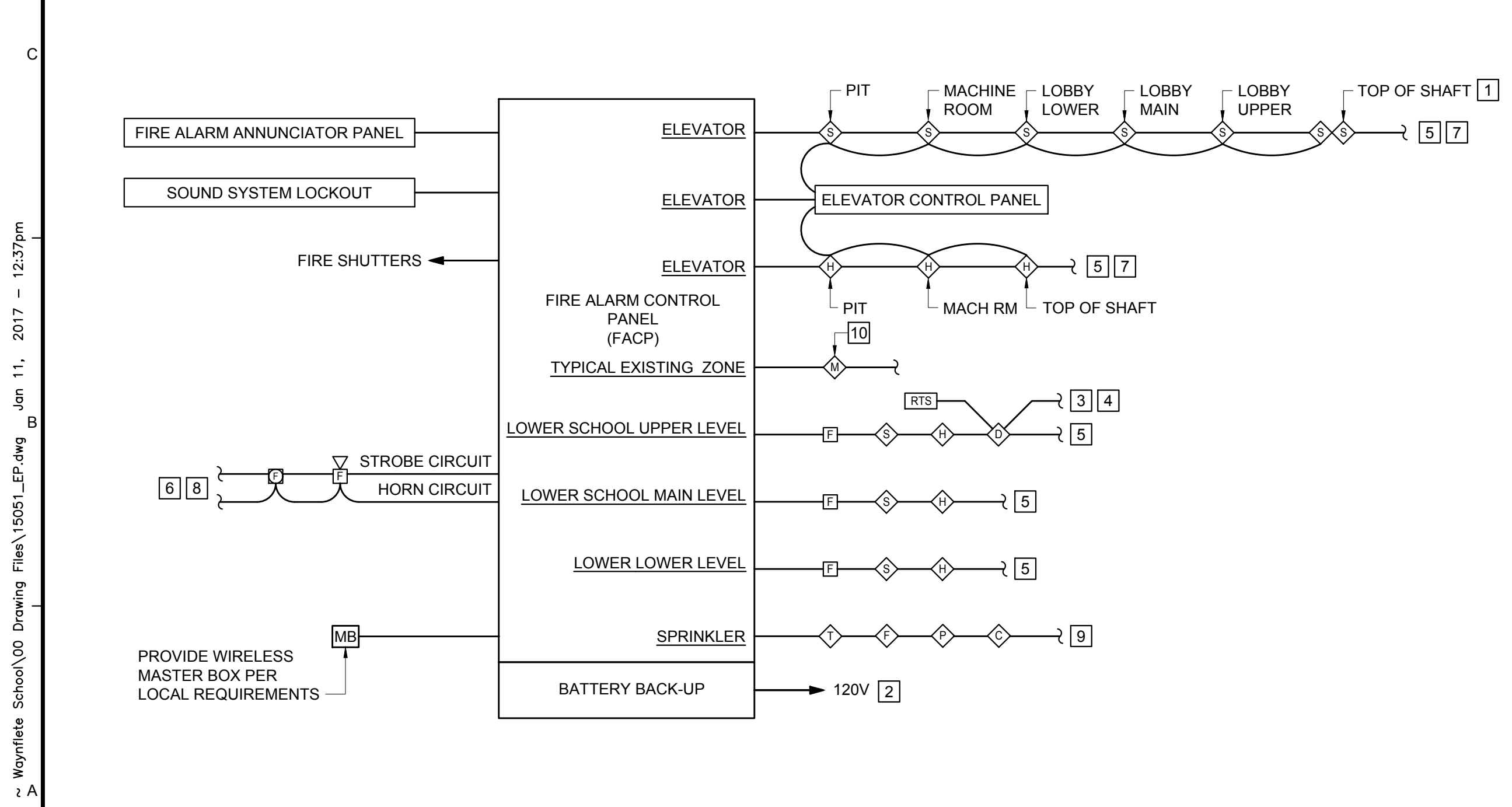
STATUS: ISSUED FOR BID

**FIRE ALARM  
RISER DIAGRAM**

FA500



D1 TYPICAL ELEVATOR PIT AND MACHINE ROOM LAYOUT  
NO SCALE



A1 FIRE ALARM RISER DIAGRAM  
NO SCALE

**FIRE ALARM GENERAL NOTES**

- PROVIDE ONLY IF SPRINKLER HEAD IS LOCATED AT TOP OF SHAFT
- PROVIDE CIRCUIT BREAKER HANDLE LOCK ON POWER CIRCUIT. HANDLE LOCK SHALL ALLOW THE CIRCUIT BREAKER TO TRIP, BUT PREVENT SWITCHING OF THE CIRCUIT BREAKER TO THE "OFF" POSITION.
- TO AUXILIARY CONTACTS IN RESPECTIVE AIR-HANDLING UNIT STARTER FOR UNIT SHUTDOWN ON ALARM. LABEL DUCT SMOKE DETECTOR AND CORRESPONDING REMOTE TEST STATION UNIQUELY. SEE MECHANICAL DRAWINGS FOR LOCATIONS OF MECHANICAL EQUIPMENT.
- SEE MECHANICAL DRAWINGS AND SPECIFICATIONS FOR HVAC CONTROLS.
- CONNECT TO REMAINING INITIATING DEVICES. SEE FLOOR PLANS.
- CONNECT TO REMAINING NOTIFICATION APPLIANCES. SEE FLOOR PLANS PROVIDE NUMBER OF CIRCUITS AS REQUIRED. WHERE FIELD CHARGING POWER SUPPLIES OR NOTIFICATION APPLIANCE CIRCUIT POWER EXTENDERS ARE USED, PROVIDE A SMOKE DETECTOR AT EACH UNIT PER NFPA 72 IN ADDITION TO SMOKE DETECTORS INDICATED ON FLOOR PLANS.
- PROVIDE CONTACTS FOR ALL DETECTORS AND CONNECT TO ELEVATOR CONTROLLER FOR SHUNT TRIP OPERATION OF ELEVATOR AND ELEVATOR RECALL. OPERATION OF SMOKE CAUSES ELEVATOR TO GO TO FLOOR OF EGRESS AND LOCK OUT WITH DOOR OPEN. 135° HEAT DETECTOR OPERATION CAUSES SHUNT TRIP CIRCUIT BREAKER TO DISCONNECT ALL POWER TO THE ELEVATOR. MOUNT ALL DETECTORS WITHIN 2' OF THEIR RESPECTIVE SPRINKLER HEAD.
- STROBES SHALL BE SYNCHRONIZED IN AREAS CONTAINING MULTIPLE UNITS.
- VERIFY AND WIRE ACTUAL QUANTITY OF SPRINKLER SYSTEM DEVICES
- EXISTING FIRE ALARM ZONE WIRING SERVING OTHER BUILDINGS ON CAMPUS SHALL REMAIN. PROVIDE AN ADDRESSABLE INTERFACE MODULE TO MONITOR EACH EXISTING FIRE ALARM ZONE THAT SERVES ANOTHER BUILDING. REFER TO LIST OF EXISTING ZONES TO REMAIN FOR FURTHER INFORMATION.

**FIRE ALARM GENERAL NOTES**

- MINIMUM SIZE CONDUIT SHALL BE 1/2" UNLESS NOTED OTHERWISE.
- SYSTEM WIRING SHALL BE INSTALLED IN CONDUIT AND IN ACCORDANCE WITH EQUIPMENT SUPPLIER'S APPROVED SHOP DRAWINGS AND WIRING DIAGRAMS.
- RISER DIAGRAM DOES NOT SHOW ENTIRE SYSTEM. REFER TO FLOOR PLANS FOR EXACT QUANTITIES AND LOCATIONS OF ALL SYSTEM DEVICES.
- COORDINATE LOCATIONS OF DUCT SMOKE DETECTORS WITH DIVISION 23.
- ALL WIRING SHALL BE CONCEALED.

N:\Projects\2015\15051\00 Drawing Files\15051\_LFR.dwg Jun 11, 2017 12:37pm