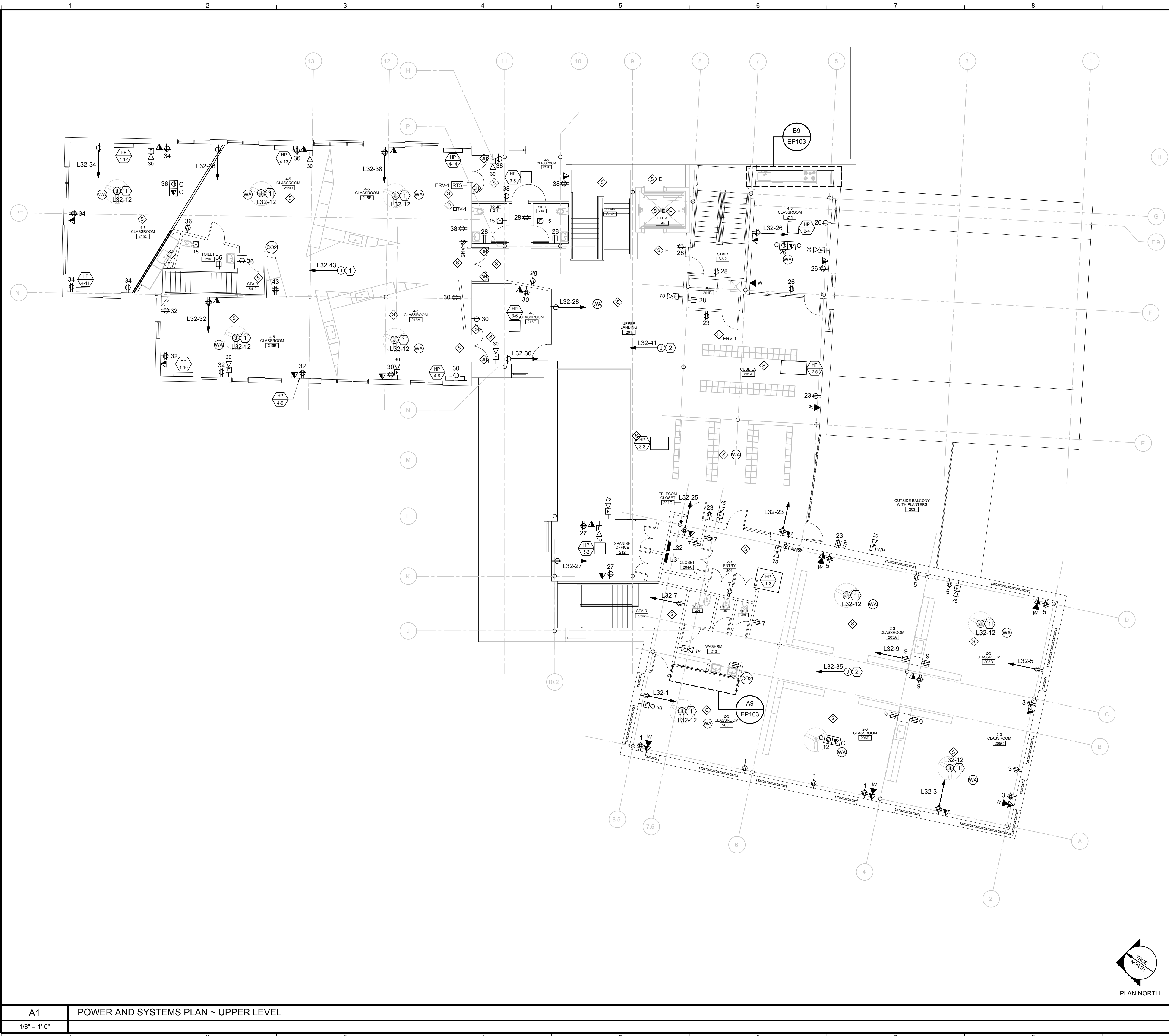
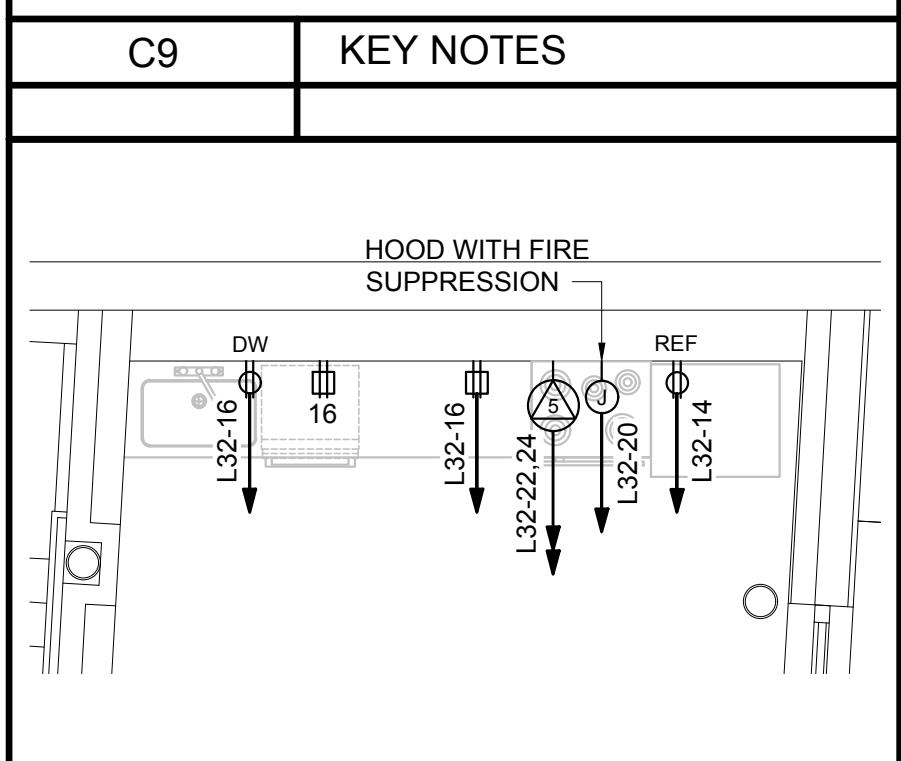


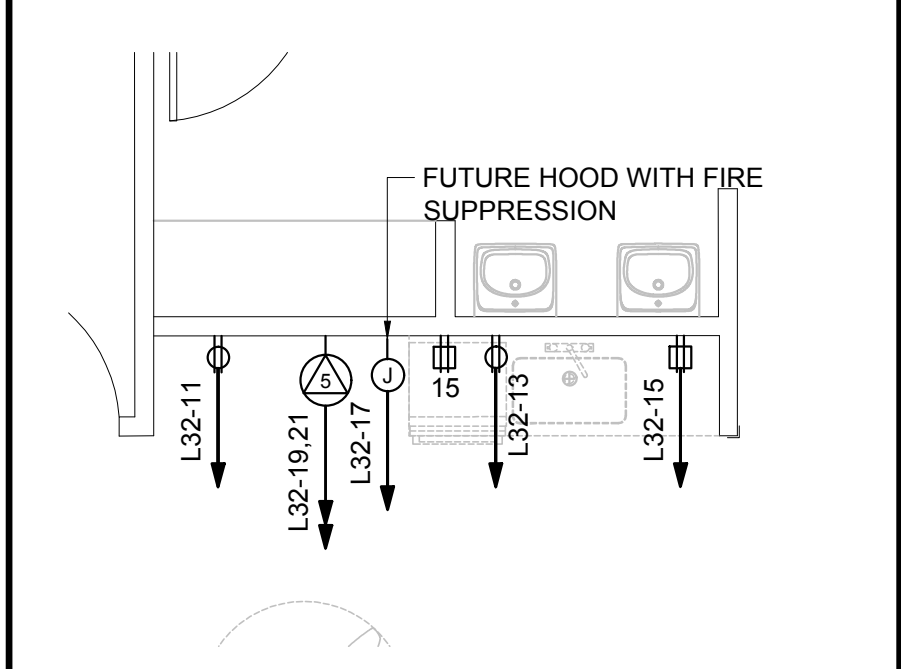
N:\Projects\2015\15051 Waynflete School\00 Drawing Files\15051\_EP.dwg Jun 11, 2017 - 12:32pm



- ① UNDER BASE BID, PROVIDE JUNCTION BOX WITH BLANK COVER FOR FUTURE PADDLE FAN AND CONTROL. AND CIRCUIT JUNCTION BOXES AS INDICATED VIA CONTROL BOX. UNDER ALTERNATE ④, INSTALL AND WIRE PADDLE FAN AND CONTROLLER FURNISHED BY DIVISION 10.
- ① PROVIDE JUNCTION BOX WITH CIRCUIT ABOVE CEILING FOR MECHANICAL CONTROL.



**B9** 211 KITCHENETTE  
1/4" = 1'-0"



**A9** 205E KITCHENETTE  
1/4" = 1'-0"

PROJECT NAME:  
**WAYNFLETE LOWER SCHOOL**  
ADDITION & RENOVATIONS  
  
WAYNFLETE SCHOOL  
360 SPRING STREET  
PORTLAND, MAINE 04102

SEAL:  
  
THIS DRAWING IS THE PROPERTY OF SCOTT SIMONS ARCHITECTS (SSA) AND IS NOT TO BE COPIED OR REPRODUCED IN PART OR WHOLE.  
2015 © SCOTT SIMONS ARCHITECTS, LLC

REVISION:

NO.	DATE
1	DATE
2	DATE
3	DATE
4	DATE
5	DATE
6	DATE

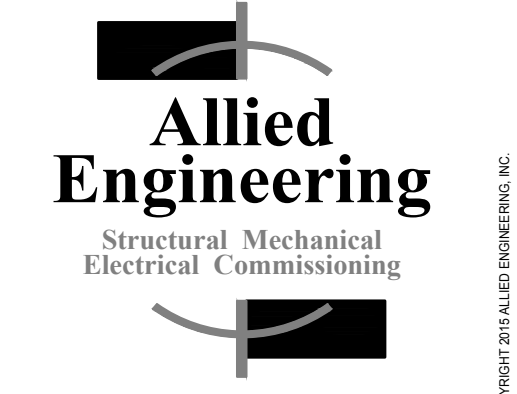
DATE OF ISSUE: 12 JANUARY 2017  
PROJECT NUMBER: 2013-0050  
STATUS: ISSUED FOR BID

**POWER AND SYSTEMS PLAN**  
**UPPER LEVEL**

**EP103**



75 York Street,  
Portland, Maine 04101  
simonsarchitects.com  
207.772.4656



160 Veranda Street  
Portland, Maine 04103  
T: 207.221.2260  
F: 207.221.2266  
Web: www.allied-eng.com

Allied Project No: 15051  
Cad File: 15051E.dwg