

Allied Engineering

Structural Mechanical
Electrical Commissioning

160 Veranda Street
Portland, Maine 04103

T: 207.221.2260
F: 207.221.2266
Web: www.allied-eng.com

Allied Project No: 15051

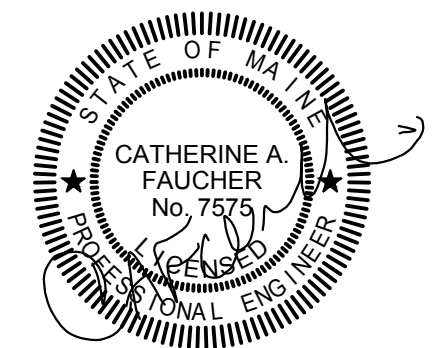
Cad File: 15051E.dwg

PROJECT NAME:

**WAYNFLETE
LOWER SCHOOL**
ADDITION & RENOVATIONS

WAYNFLETE SCHOOL
360 SPRING STREET
PORTLAND, MAINE 04102

SEAL:



THIS DRAWING IS THE PROPERTY OF SCOTT SIMONS ARCHITECTS (SSA) AND IS NOT TO BE COPIED OR REPRODUCED IN PART OR WHOLE. 2015 © SCOTT SIMONS ARCHITECTS, LLC

REVISION:

1	DATE
2	DATE
3	DATE
4	DATE
5	DATE
6	DATE

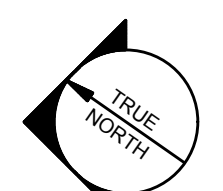
DATE OF ISSUE: 12 JANUARY 2017

PROJECT NUMBER: 2013-0050

STATUS: ISSUED FOR BID

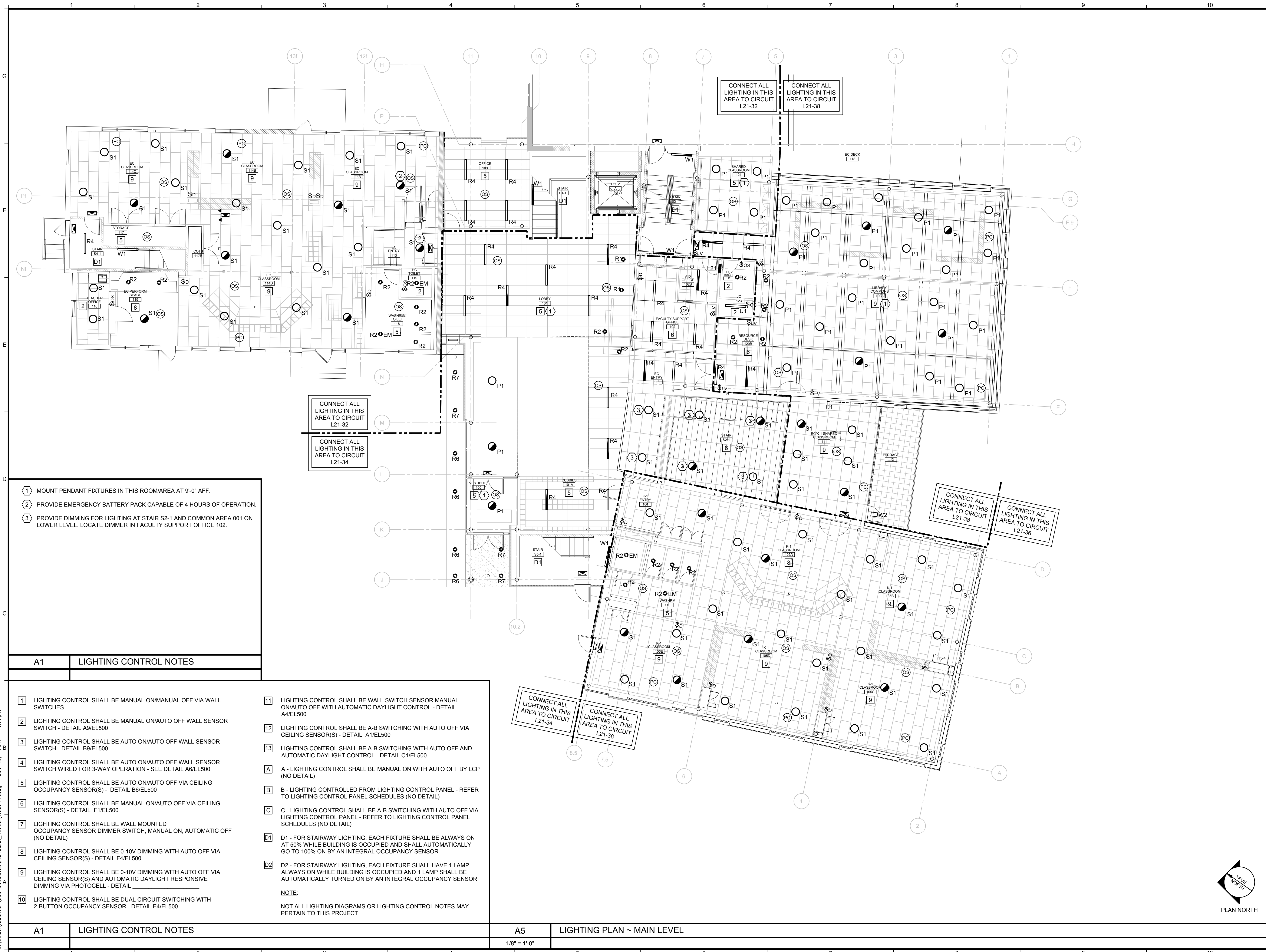
LIGHTING PLAN

MAIN LEVEL



PLAN NORTH

EL102



- ① MOUNT PENDANT FIXTURES IN THIS ROOM/AREA AT 9'-0" AFF.
- ② PROVIDE EMERGENCY BATTERY PACK CAPABLE OF 4 HOURS OF OPERATION.
- ③ PROVIDE DIMMING FOR LIGHTING AT STAIR S2-1 AND COMMON AREA 001 ON LOWER LEVEL. LOCATE DIMMER IN FACULTY SUPPORT OFFICE 102.

A1 LIGHTING CONTROL NOTES

- | | |
|---|---|
| <ul style="list-style-type: none"> ① LIGHTING CONTROL SHALL BE MANUAL ON/MANUAL OFF VIA WALL SWITCHES. ② LIGHTING CONTROL SHALL BE MANUAL ON/AUTO OFF WALL SENSOR SWITCH - DETAIL A9/EL500 ③ LIGHTING CONTROL SHALL BE AUTO ON/AUTO OFF WALL SENSOR SWITCH - DETAIL B9/EL500 ④ LIGHTING CONTROL SHALL BE AUTO ON/AUTO OFF WALL SENSOR SWITCH WIRED FOR 3-WAY OPERATION - SEE DETAIL A6/EL500 ⑤ LIGHTING CONTROL SHALL BE AUTO ON/AUTO OFF VIA CEILING OCCUPANCY SENSOR(S) - DETAIL B6/EL500 ⑥ LIGHTING CONTROL SHALL BE MANUAL ON/AUTO OFF VIA CEILING SENSOR(S) - DETAIL F1/EL500 ⑦ LIGHTING CONTROL SHALL BE WALL MOUNTED OCCUPANCY SENSOR DIMMER SWITCH, MANUAL ON, AUTOMATIC OFF (NO DETAIL) ⑧ LIGHTING CONTROL SHALL BE 0-10V DIMMING WITH AUTO OFF VIA CEILING SENSOR(S) - DETAIL F4/EL500 ⑨ LIGHTING CONTROL SHALL BE 0-10V DIMMING WITH AUTO OFF VIA CEILING SENSOR(S) AND AUTOMATIC DAYLIGHT RESPONSIVE DIMMING VIA PHOTOCELL - DETAIL ⑩ LIGHTING CONTROL SHALL BE DUAL CIRCUIT SWITCHING WITH 2-BUTTON OCCUPANCY SENSOR - DETAIL E4/EL500 | <ul style="list-style-type: none"> ⑪ LIGHTING CONTROL SHALL BE WALL SENSOR MANUAL ON/AUTO OFF WITH AUTOMATIC DAYLIGHT CONTROL - DETAIL A4/EL500 ⑫ LIGHTING CONTROL SHALL BE A-B SWITCHING WITH AUTO OFF VIA CEILING SENSOR(S) - DETAIL A1/EL500 ⑬ LIGHTING CONTROL SHALL BE A-B SWITCHING WITH AUTO OFF AND AUTOMATIC DAYLIGHT CONTROL - DETAIL C1/EL500 A - LIGHTING CONTROL SHALL BE MANUAL ON WITH AUTO OFF BY LCP (NO DETAIL) B - LIGHTING CONTROLLED FROM LIGHTING CONTROL PANEL - REFER TO LIGHTING CONTROL PANEL SCHEDULES (NO DETAIL) C - LIGHTING CONTROL SHALL BE A-B SWITCHING WITH AUTO OFF VIA LIGHTING CONTROL PANEL - REFER TO LIGHTING CONTROL PANEL SCHEDULES (NO DETAIL) D1 - FOR STAIRWAY LIGHTING, EACH FIXTURE SHALL BE ALWAYS ON AT 50% WHILE BUILDING IS OCCUPIED AND SHALL AUTOMATICALLY GO TO 100% ON BY AN INTEGRAL OCCUPANCY SENSOR D2 - FOR STAIRWAY LIGHTING, EACH FIXTURE SHALL HAVE 1 LAMP ALWAYS ON WHILE BUILDING IS OCCUPIED AND 1 LAMP SHALL BE AUTOMATICALLY TURNED ON BY AN INTEGRAL OCCUPANCY SENSOR <p>NOTE:
NOT ALL LIGHTING DIAGRAMS OR LIGHTING CONTROL NOTES MAY PERTAIN TO THIS PROJECT</p> |
|---|---|

A1 LIGHTING CONTROL NOTES

A5 LIGHTING PLAN ~ MAIN LEVEL

1/8" = 1'-0"

C:\Users\Gcharlier\cod_autosaves\Autosaves\152266\15051E\EL.dwg Jan 13, 2017 - 1:22pm