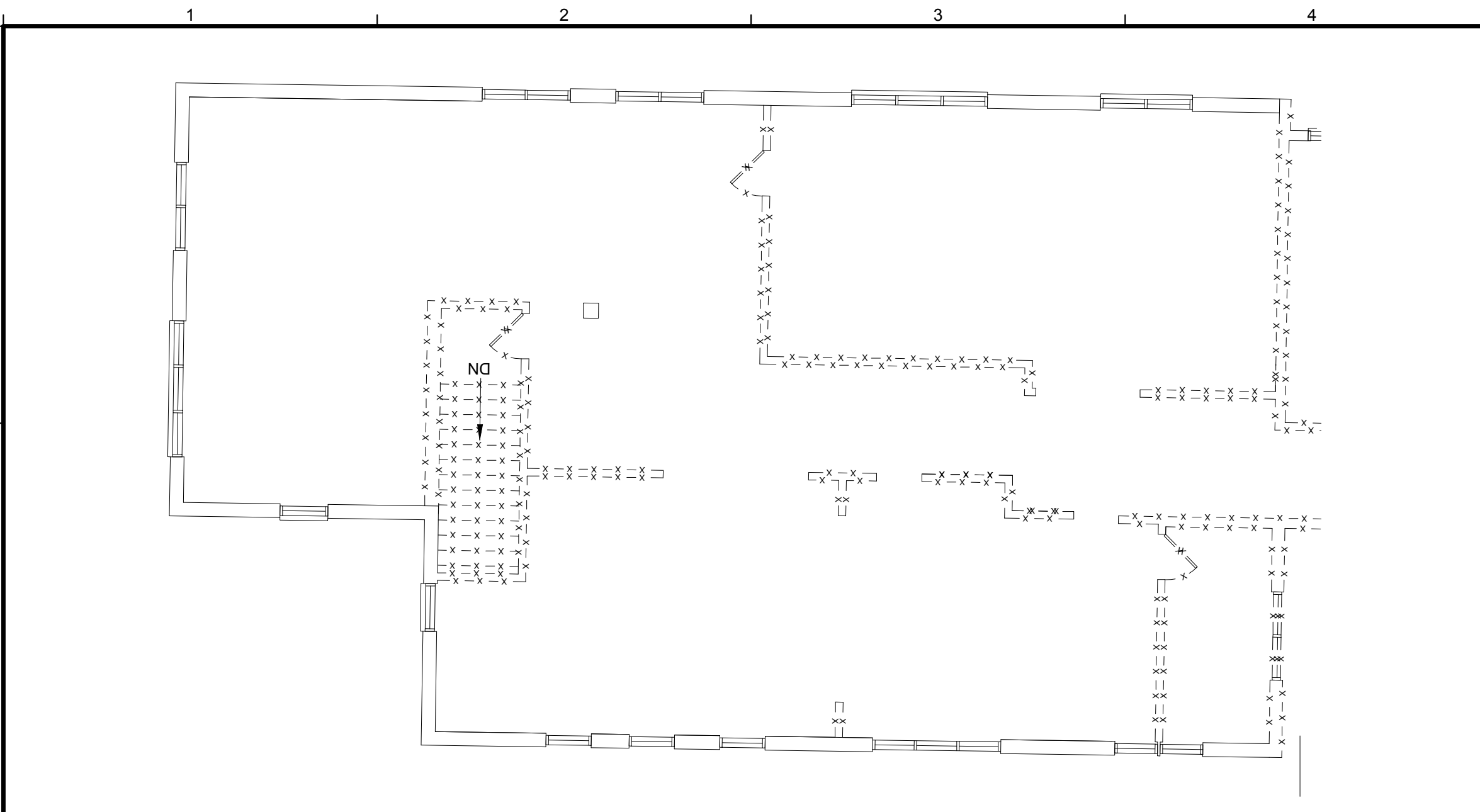
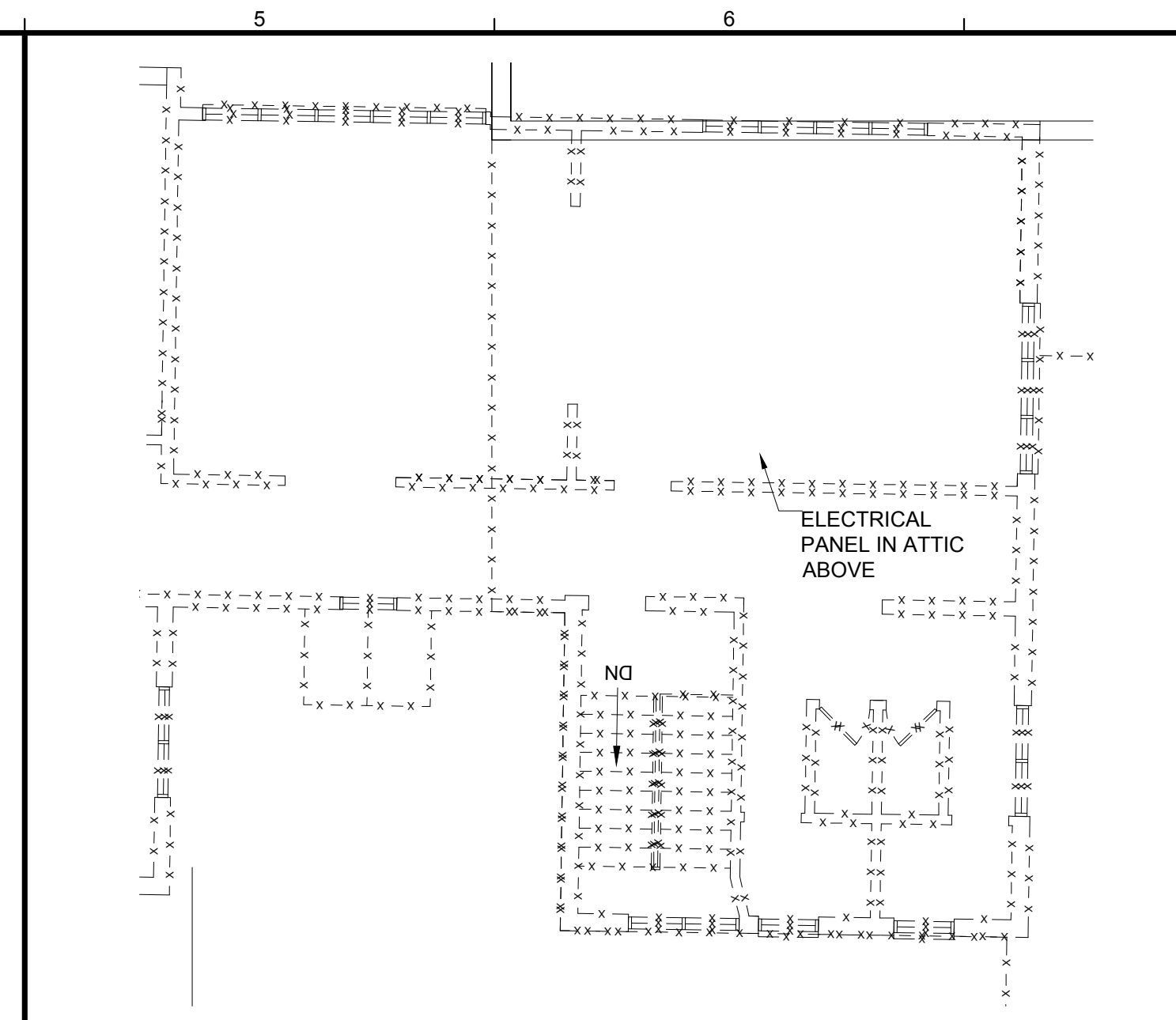


N:\Projects\2015\15051 - Waynflete School\00 Drawing Files\15051\_EP.dwg Jun 11, 2017 - 12:31pm



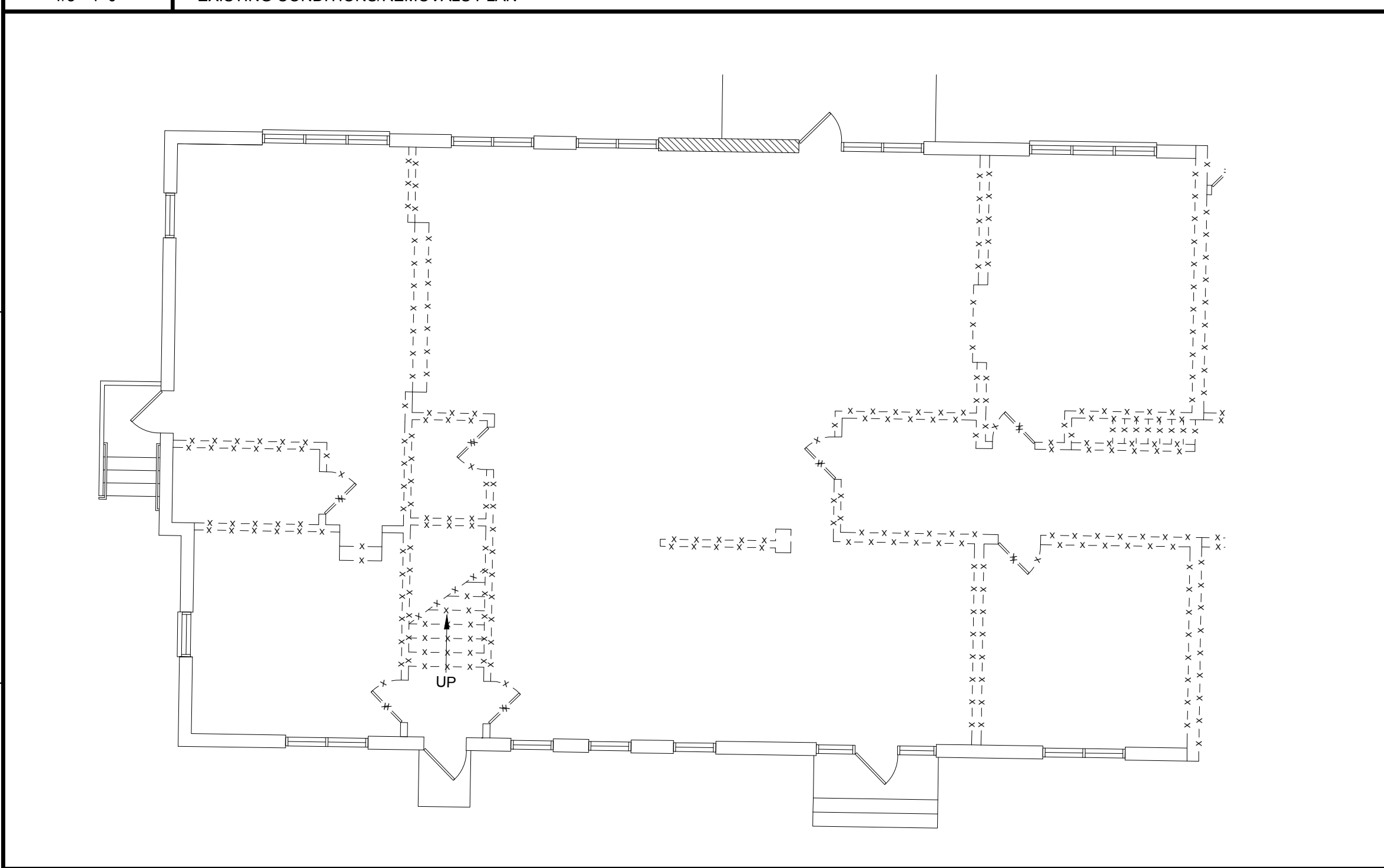
F1 UPPER LEVEL FOUNDERS  
1/8"=1'-0" EXISTING CONDITIONS/REMOVALS PLAN



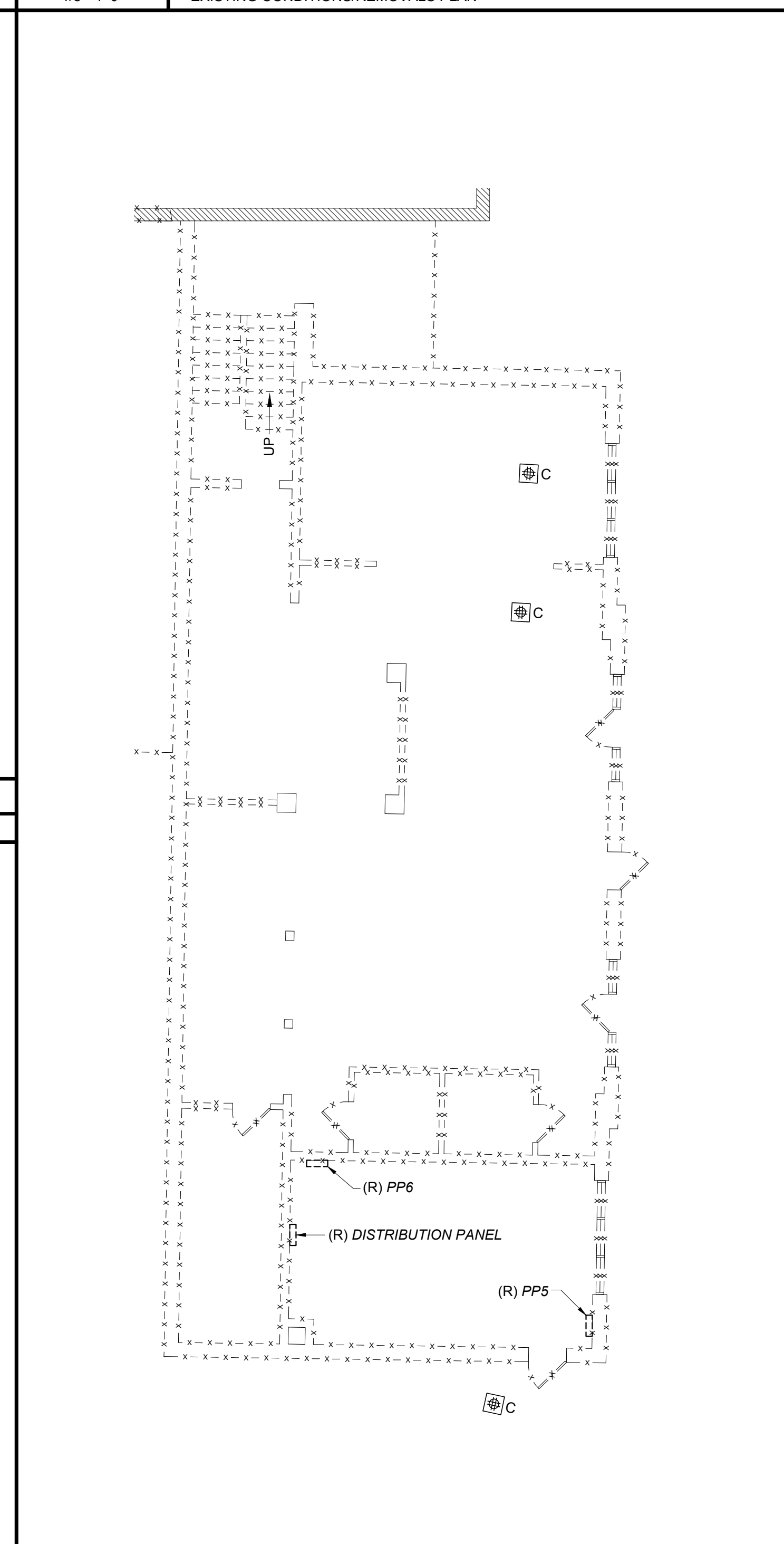
F5 UPPER LEVEL FOUNDERS  
1/8"=1'-0" EXISTING CONDITIONS/REMOVALS PLAN

1. REFER TO FLOOR PLANS FOR SCOPE OF WORK AREA. REFER TO ARCHITECTURAL AND MECHANICAL DRAWINGS FOR THE ADDITIONAL DEMOLITION SCOPE OF WORK.
2. DISCONNECT AND REMOVE ALL WIRING FOR EQUIPMENT TO BE REMOVED BACK TO THE POINT OF CONNECTION. NOTHING SHALL BE ABANDONED IN PLACE.
3. VERIFY ALL EXISTING SOURCES OF POWER TO EQUIPMENT PRIOR TO FINAL REMOVAL.
4. COORDINATE ALL SHUTDOWN PROCEDURES WITH THE OWNER PRIOR TO DISCONNECTING ANY CIRCUITS.
5. WHERE REMOVALS IMPACT WIRING TO EXISTING ITEMS TO REMAIN, PROVIDE WIRING AND CONNECTIONS AS REQUIRED TO RE-FEED ITEMS TO REMAIN.
6. PROVIDE BLANK COVER PLATES FOR REMOVED POWER AND COMMUNICATIONS OUTLETS IN EXISTING WALLS TO REMAIN.
7. THE WORK INCLUDES DISPOSAL OF ALL REMOVED ELECTRICAL ITEMS INCLUDING BALLASTS, LAMPS, THERMOSTATS, ETC. LEGALLY DISPOSE OF ALL HAZARDOUS MATERIALS.
8. THE DEMOLITION FLOOR PLANS ARE REPRESENTATIVE AND DO NOT SHOW ALL EXISTING WALLS, EQUIPMENT, WIRING, CONDUITS, BOXES, DEVICES, OR FIXTURES.

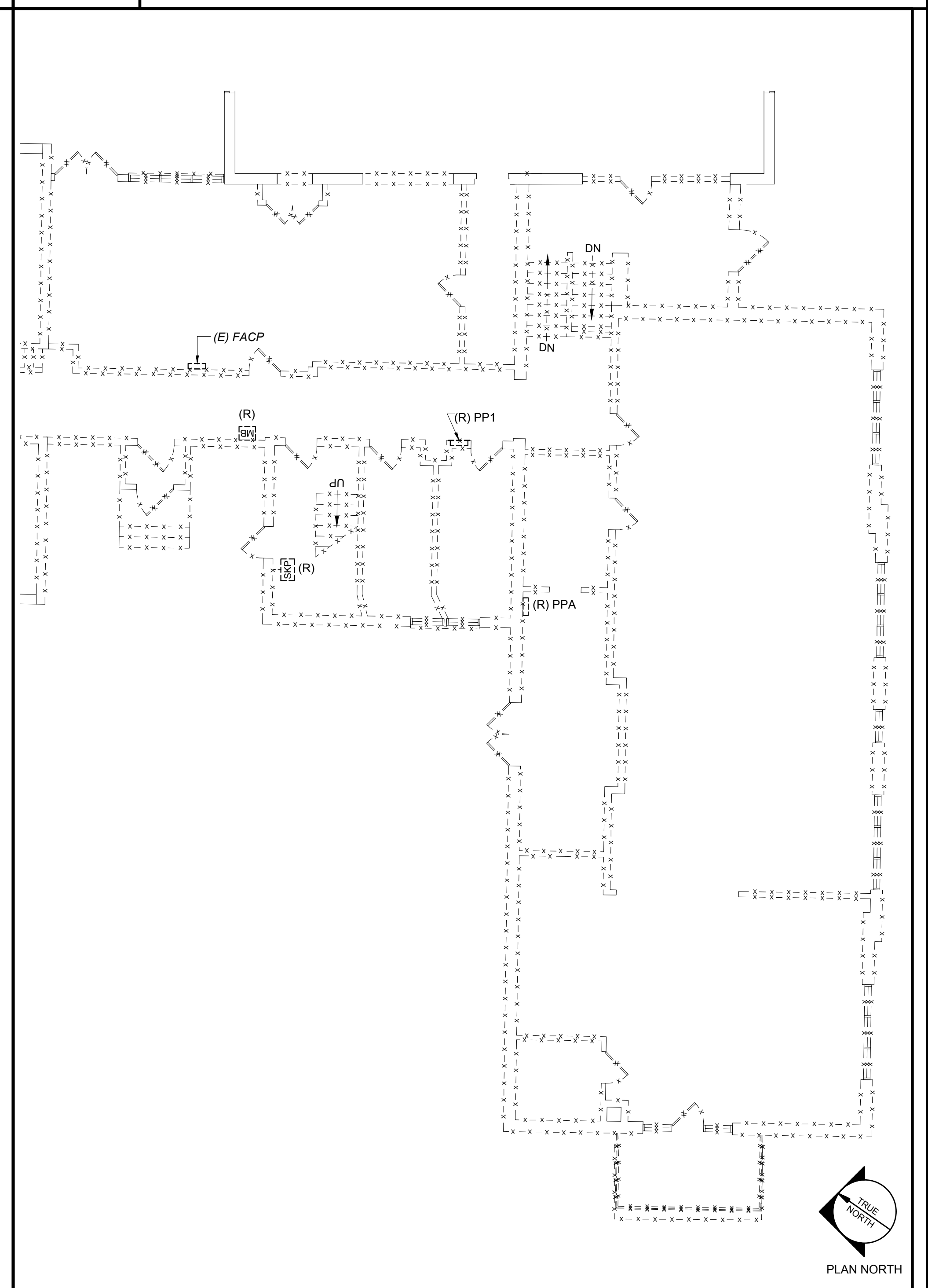
E9 ELECTRICAL REMOVALS NOTES



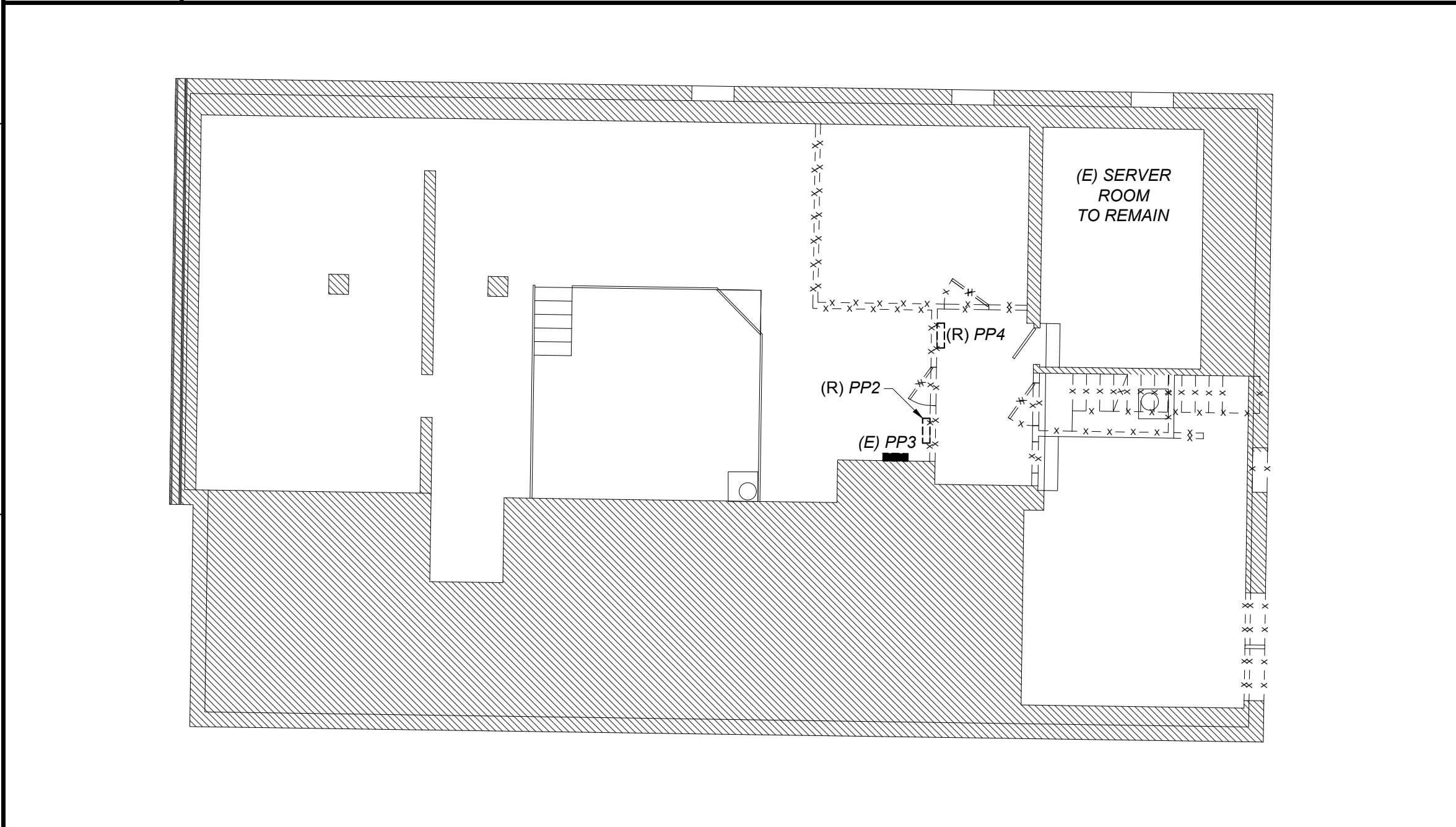
C1 MAIN LEVEL FOUNDERS  
1/8"=1'-0" EXISTING CONDITIONS/REMOVALS PLAN



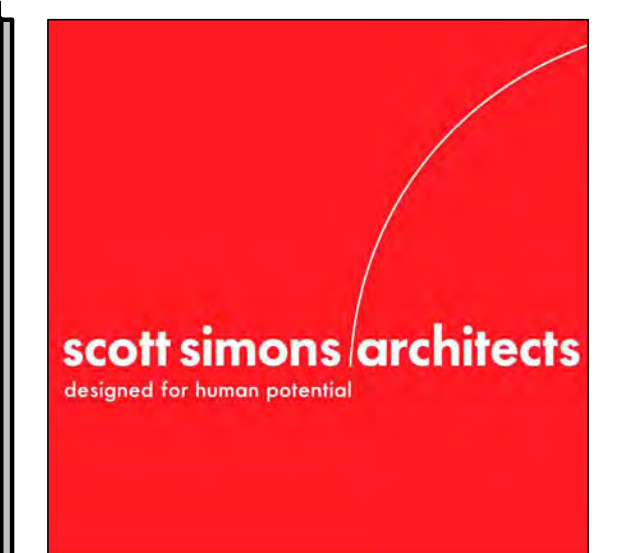
A4 BASEMENT LOWER SCHOOL  
1/8"=1'-0" EXISTING CONDITIONS/REMOVALS PLAN



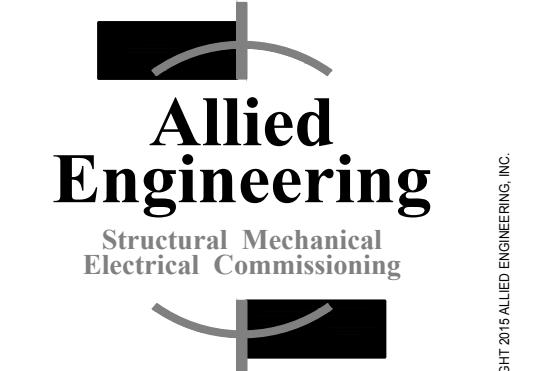
A4 MAIN LEVEL LOWER SCHOOL  
1/8"=1'-0" EXISTING CONDITIONS/REMOVALS PLAN



A1 BASEMENT FOUNDERS  
1/8"=1'-0" EXISTING CONDITIONS/REMOVALS PLAN



75 York Street,  
Portland, Maine 04101  
simonsarchitects.com  
207.772.4656

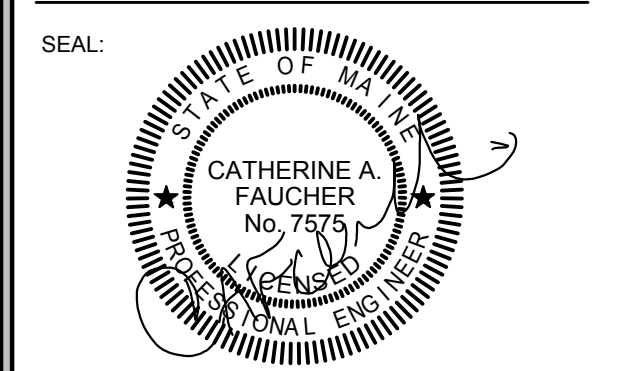


160 Veranda Street  
Portland, Maine 04103  
T: 207.221.2260  
F: 207.221.2266  
Web: www.allied-eng.com

Allied Project No: 15051  
Cad File: 15051E.dwg

PROJECT NAME:  
**WAYNFLETE  
LOWER SCHOOL**  
ADDITION & RENOVATIONS

WAYNFLETE SCHOOL  
360 SPRING STREET  
PORTLAND, MAINE 04102



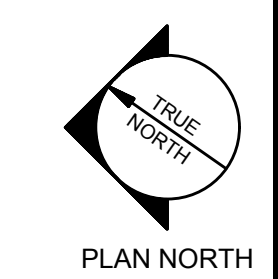
THIS DRAWING IS THE PROPERTY OF SCOTT SIMONS ARCHITECTS (SSA) AND IS NOT TO BE COPIED OR REPRODUCED IN PART OR WHOLE. 2015 © SCOTT SIMONS ARCHITECTS, LLC

REVISION:

1	DATE
2	DATE
3	DATE
4	DATE
5	DATE
6	DATE

DATE OF ISSUE: 12 JANUARY 2017  
PROJECT NUMBER: 2013-0050  
STATUS: ISSUED FOR BID

**EXISTING  
CONDITIONS/  
REMOVALS PLAN  
MAIN LEVEL**



**ED101**