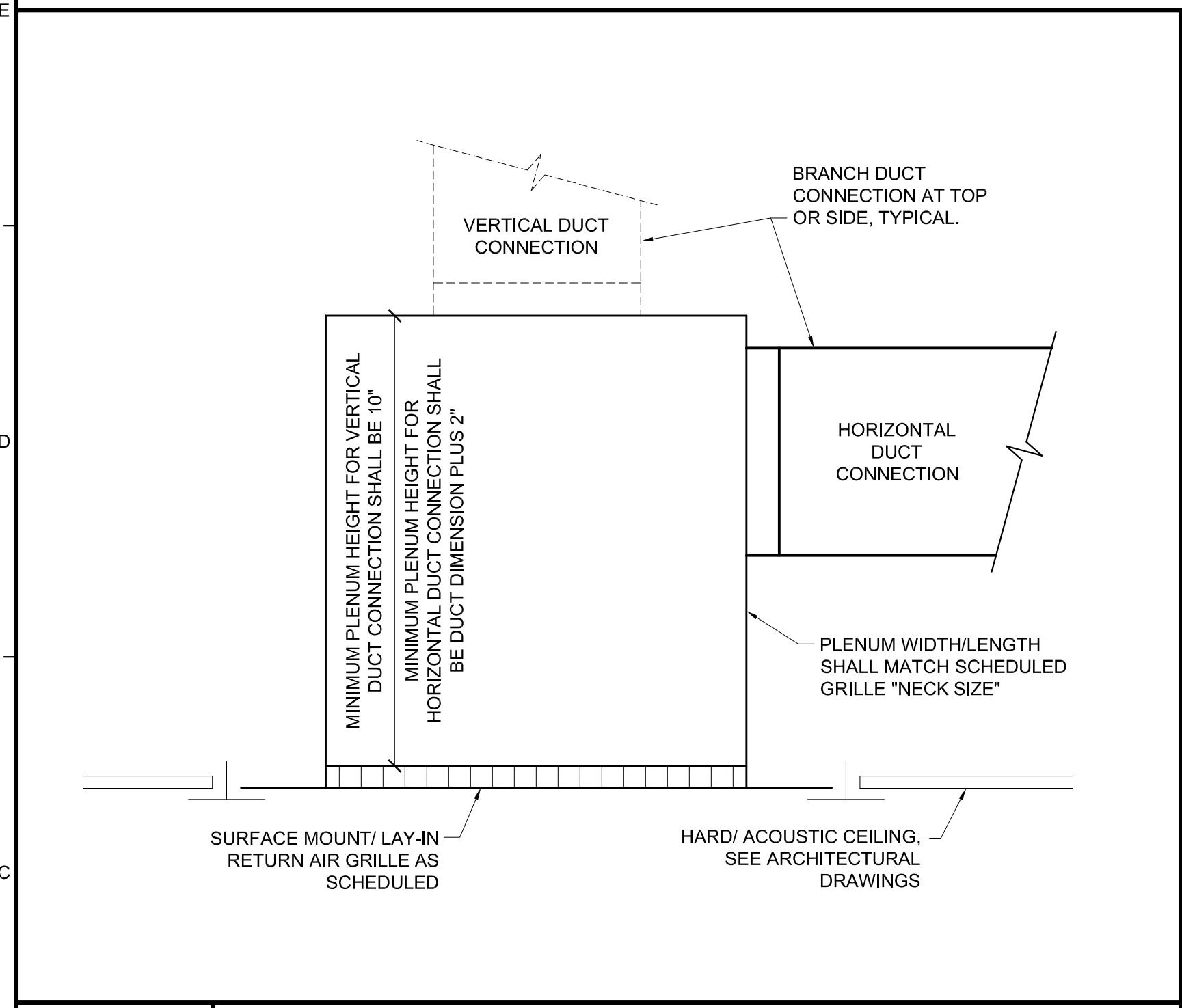
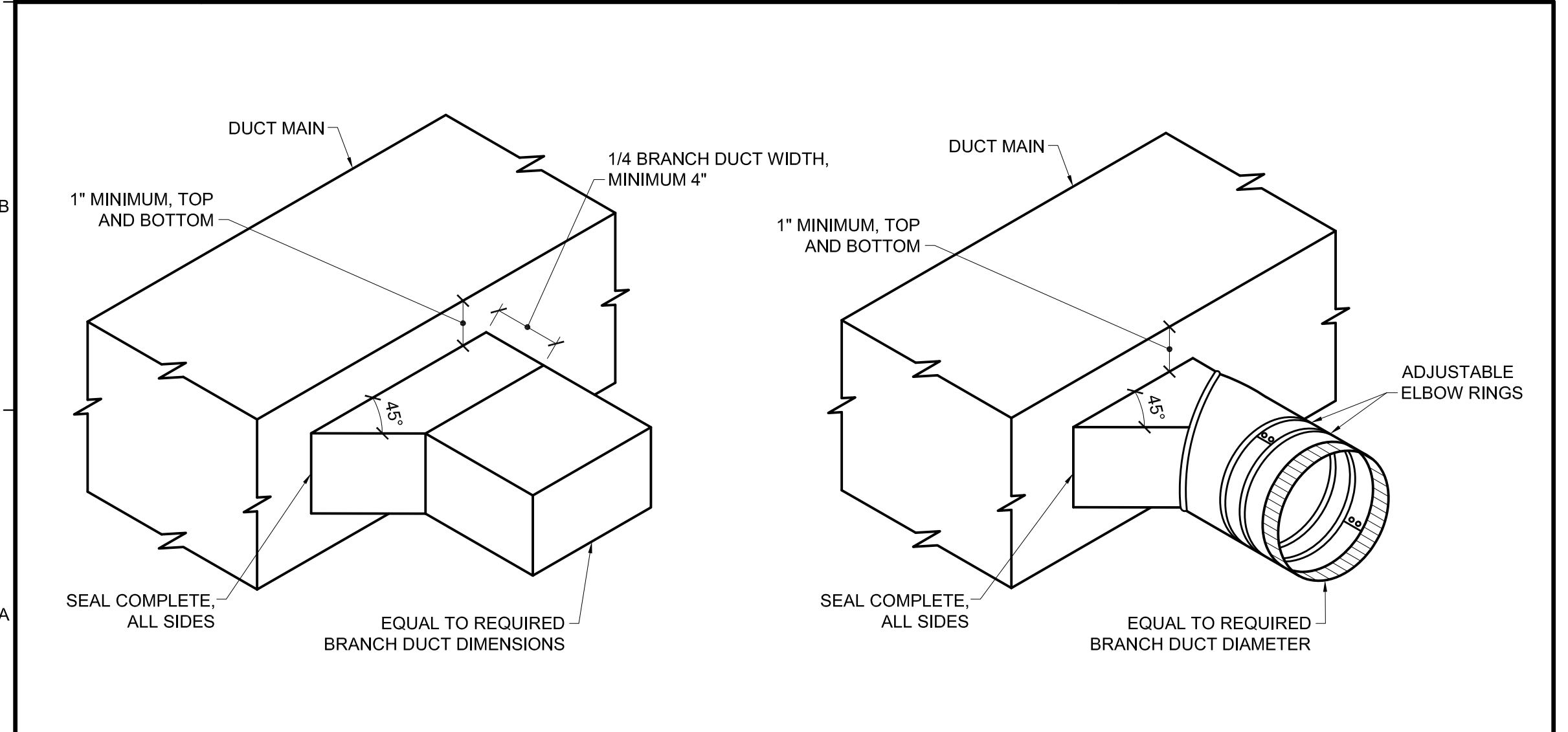


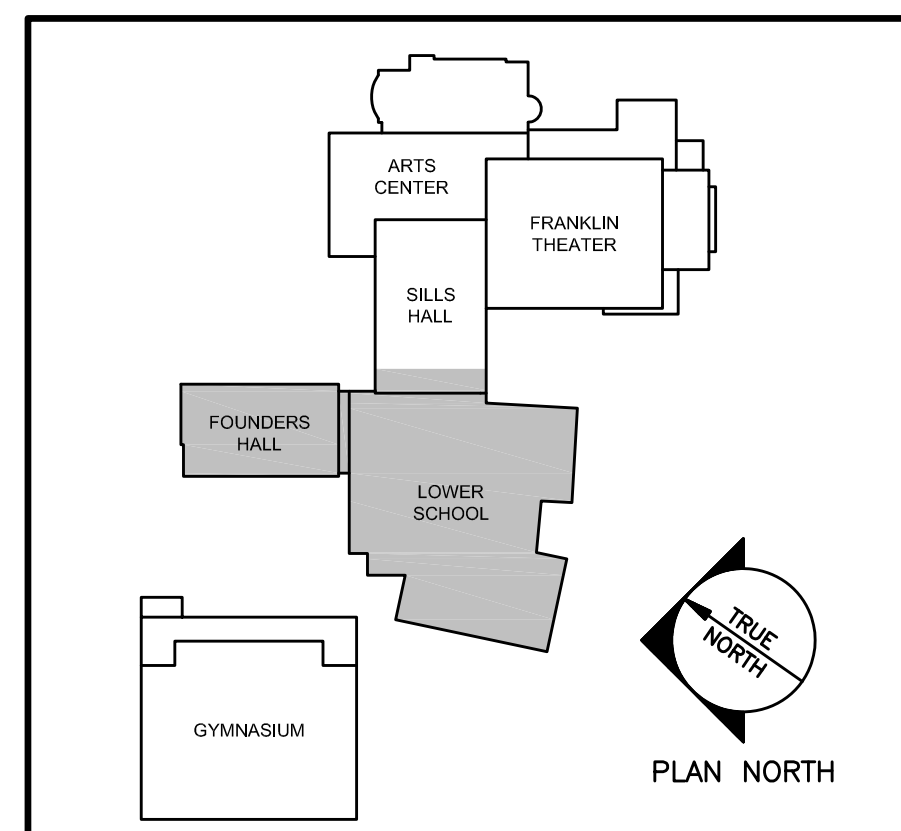
- KEYED NOTES:**
- 1 RECIRCULATING RANGE HOOD BY DIVISION 11.
 - 2 HVAC UNIT RECESSED WITHIN FRAMED-OUT STRUCTURE. COORDINATE WITH MANUFACTURER'S MINIMUM REQUIRED SERVICE CLEARANCES.
 - 3 16x10S BRANCH TAKE OFF FROM 26x12S MAIN, THRU FACE OF SOFFIT THEN TRANSITION TO 14"OS.



C1 DETAIL ~ RETURN AIR REGISTER BOOT
NOT TO SCALE



A5 DETAIL ~ TYPICAL SQUARE AND ROUND BRANCH DUCT TAKE-OFF FITTINGS
NOT TO SCALE



A9 KEYED PLAN
NOT TO SCALE

A5 MECHANICAL PLAN ~ MAIN LEVEL
1/8" = 1'-0"

PROJECT NAME:
WAYNFLETE LOWER SCHOOL
ADDITION & RENOVATIONS

WAYNFLETE SCHOOL
360 SPRING STREET
PORTLAND, MAINE 04102



THIS DRAWING IS THE PROPERTY OF SCOTT SIMONS ARCHITECTS (SSA) AND IS NOT TO BE COPIED OR REPRODUCED IN PART OR WHOLE.
2015 © SCOTT SIMONS ARCHITECTS, LLC

REVISION:

NO.	DATE	DATE	DATE	DATE	DATE
1					
2					
3					
4					
5					
6					

DATE OF ISSUE: 12 JANUARY 2017
PROJECT NUMBER: 2013-0050
STATUS: ISSUED FOR BID

MECHANICAL PLAN ~ MAIN LEVEL

MH102