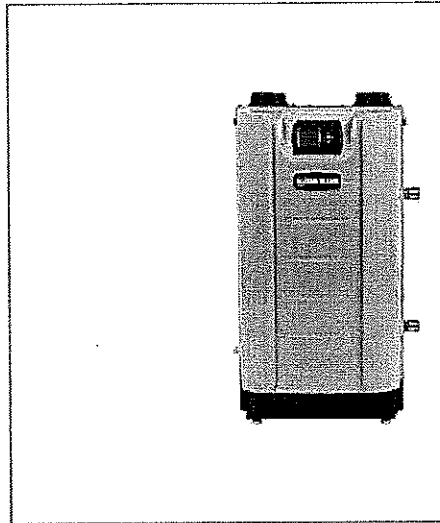


[BOILERS \(/PRODUCTS/BOILERS\)](#)

> [RESIDENTIAL BOILERS \(/PRODUCTS/RESIDENTIAL-BOILERS\)](#)

> [EVERGREEN GAS BOILER](#)



Evergreen Gas Boiler

- Stainless Steel Fire Tube Heat Exchanger with non-metallic base
- Floor Standing Boiler with optional wall mount kit
- Sizes 220MBH, 299MBH, 399MBH
- Modulating Condensing Boiler with 10:1 Turndown
- 95% AFUE (220/299); 96.5% Combustion Efficiency (399)
- 4 Pump/Auxiliary Outputs (Example: 1 boiler loop pump +3 zone pumps)
- Up to 8 Multiple Boiler Control with lead/lag rotation
- Modbus® to BMS connectivity
- Each input can be assigned to a priority (Up to 3 Priorities)
- Multiple Inputs can be assigned one priority (Zone Based Control)
- All Lag Boiler Inputs and Output can be used
- 0-10 Volt Input (modulation or set point)
- Configurable Auxiliary Input/Output System
- Boiler Circulator Included

Share product info

» [Email this page \(/forward?path=products/evergreen-gas-boiler\)](#)

[Technical Data](#)

[Product Video](#)

[Downloads](#)

Technical Data