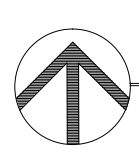
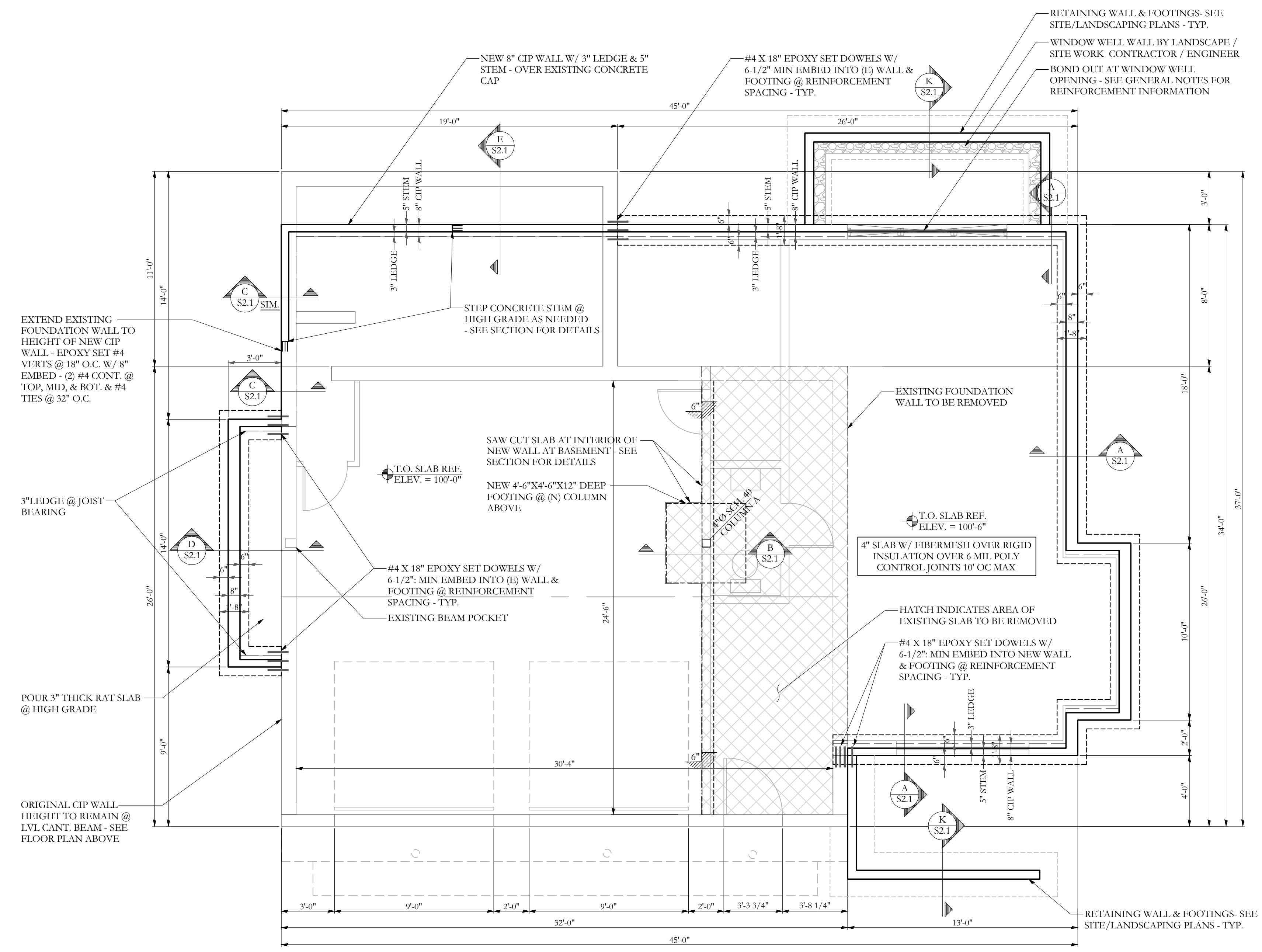


MARK  
MUELLER  
ARCHITECTS

A.I.A.  
100 Commercial Street  
Suite 205  
Portland, Maine 04101  
Phone: 207.774.9057  
Fax: 207.773.3851  
Email: mark@muellerarchitects.com

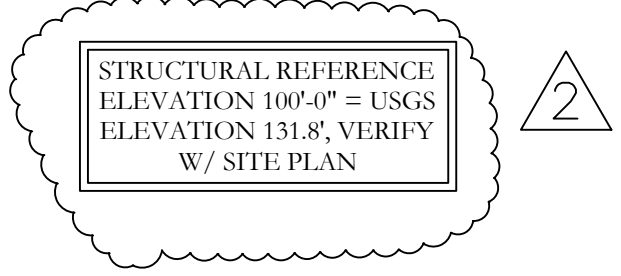
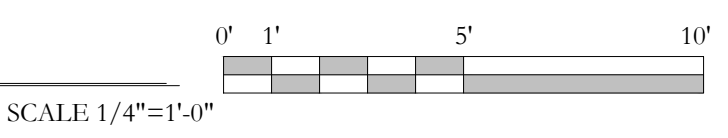
©COPYRIGHT  
MUELLER ARCHITECTS, LLC

ANSEL RESIDENCE  
11 ORCHARD STREET  
PORTLAND, MAINE

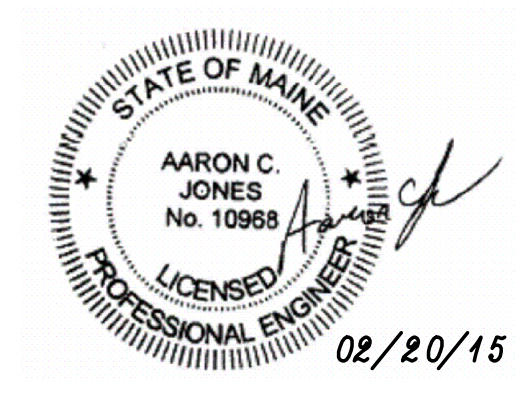


FOUNDATION PLAN

- NOTES:
1. ALL FOOTINGS ARE 10" DEEP 1'-8" WIDE x CONT. WITH (2) # 4 BARS LONGITUDINAL, AND #4 CROSS TIES @ 32" O.C. TYP. UNO
  2. STEP IN TOP OF FOUNDATION WALL IS INDICATED THUS: AND SHOWS LOWER SIDE OF WALL.
  3. SEE S1.1 FOR STRUCTURAL GENERAL NOTES
  4. FOOTING TO BEAR 4'-6" MIN BELOW GRADE T.O. FOOTINGS ARE INDICATED THUS: (XX'-XX")
  5. STEP IN TOP OF FOOTING IS INDICATED THUS: AND SHOWS LOWER FOOTING.



**Structural Integrity**  
Consulting Engineers, Inc.



77 Oak Street  
Portland, ME 04101  
p. 207-774-614  
f. 866-793-7835  
www.structuralintegrity.com

BUILD WITH CONFIDENCE  
©2014 Structural Integrity Consulting Engineers, Inc.  
SI# 14-0225

FOUNDATION PLAN

REVISIONS OF:  
DATE: Jan. 28th, 2015  
PROJECT: ANSEL RESIDENCE  
DRAWN BY: WMC  
CHECK BY: ACJ

S1.1