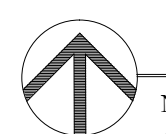
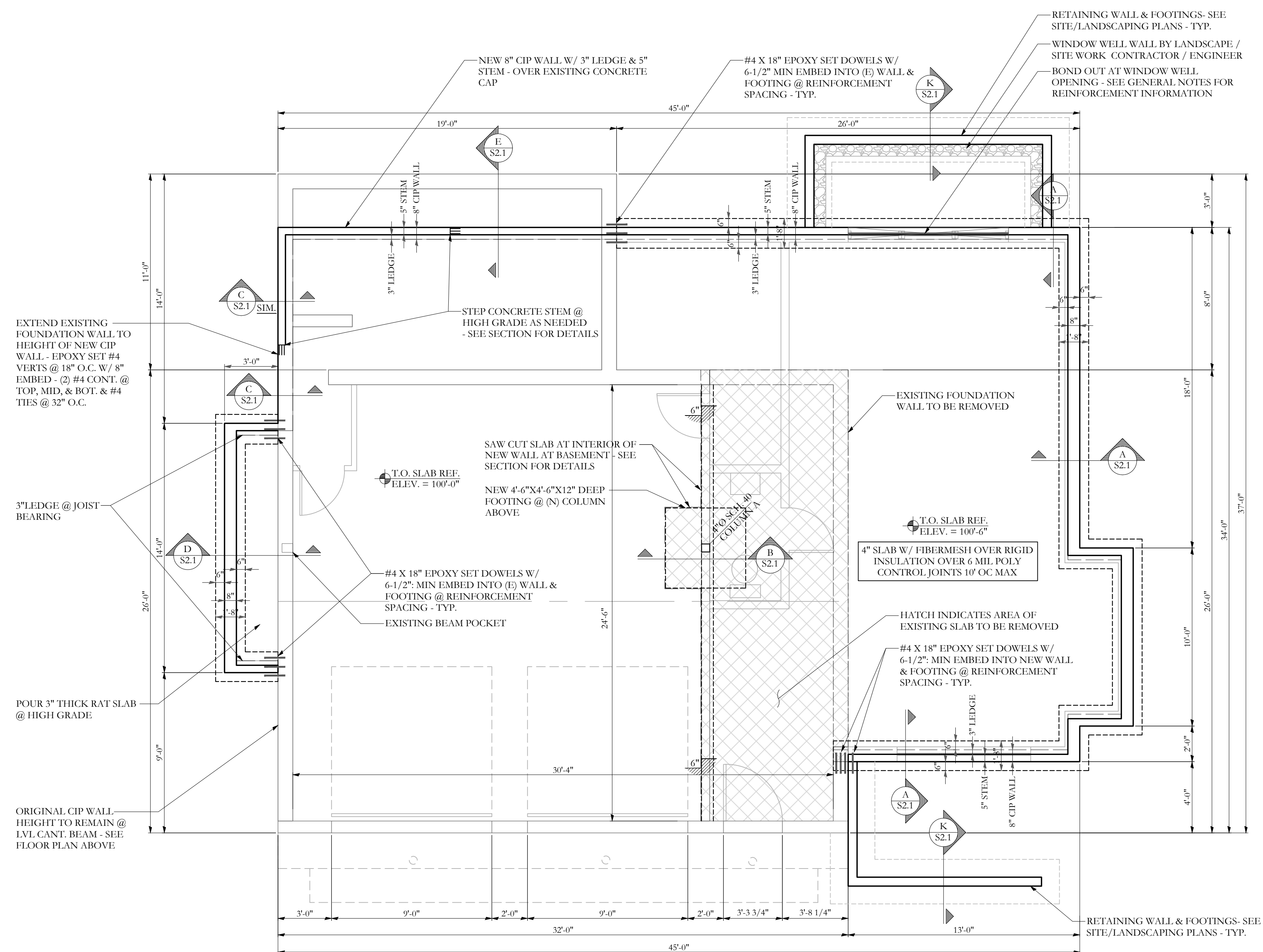


MARK
MUELLER
ARCHITECTS
A.I.A.
100 Commercial Street
Suite 205
Portland, Maine 04101
Phone: 207.774.9057
Fax: 207.773.3851
Email: mark@muellerarchitects.com

©COPYRIGHT
MUELLER ARCHITECTS, LLC

ANSEL RESIDENCE
11 ORCHARD STREET
PORTLAND, MAINE



FOUNDATION PLAN



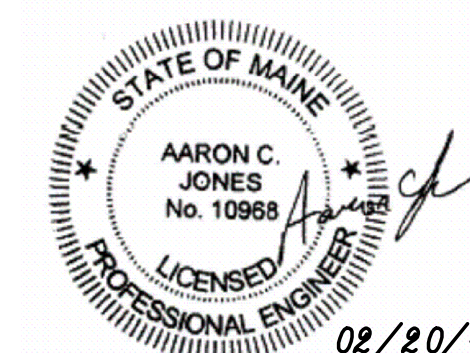
NOTES:

1. ALL FOOTINGS ARE 10" DEEP 1'-8" WIDE x CONT. WITH (2) # 4 BARS LONGITUDINAL, AND #4 CROSS TIES @ 32" O.C. TYP. UNO
2. STEP IN TOP OF FOUNDATION WALL IS INDICATED THUS: AND SHOWS LOWER SIDE OF WALL.
3. SEE S1.1 FOR STRUCTURAL GENERAL NOTES
4. FOOTING TO BEAR 4'-6" MIN BELOW GRADE T.O. FOOTINGS ARE INDICATED THUS: (XX'-XX")
5. STEP IN TOP OF FOOTING IS INDICATED THUS: AND SHOWS LOWER FOOTING.

REVISIONS TO:

REVISIONS TO:	FOR PRINT
DATE	Jan. 28th, 2015
PROJECT	ANSEL RESIDENCE
DRAWN BY	WMC
CHECK BY	ACJ

Structural Integrity
Consulting Engineers, Inc.



77 Oak Street
Portland, ME 04101
p. 207-774-4614
f. 866-793-7835
www.structuralintegrity.com

02/20/15

BUILD WITH CONFIDENCE
©2015 Structural Integrity Consulting Engineers, Inc.
SI# 14-0225

S1.1