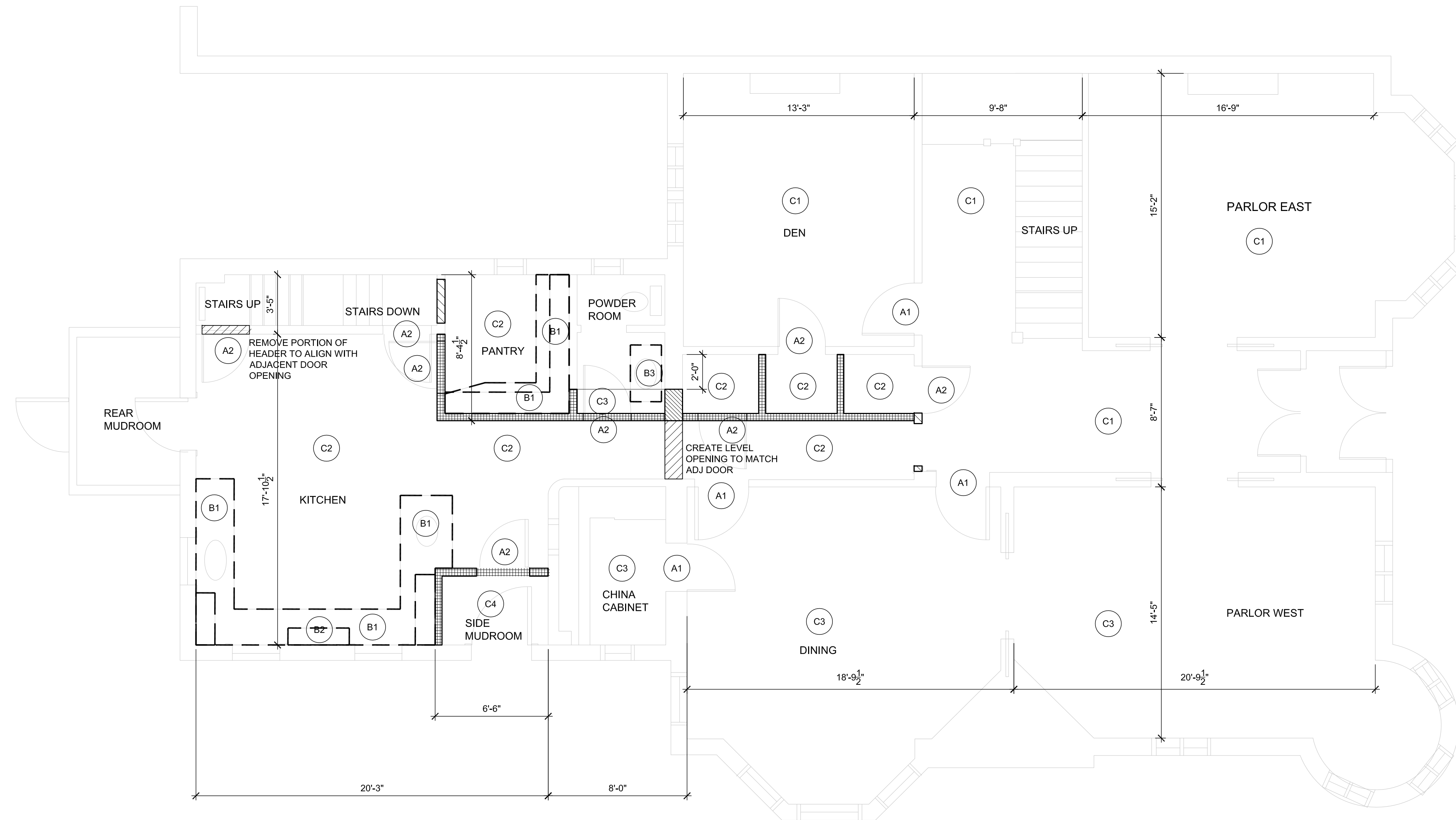




Permitting and Inspections Department  
 Approved with Conditions  
 03/05/2019



**DEMO LEGEND**

TAG	DESCRIPTION
<b>DOOR OPENINGS</b>	
(A1)	REMOVE DOOR AND HINGES ONLY - REPAIR TRIM AS REQUIRED. SALVAGE DOOR AND HINGES
(A2)	REMOVE DOOR, HINGES, AND TRIM. SALVAGE DOOR, HINGES, AND TRIM CORNERS.
<b>CABINETS, FURNISHINGS</b>	
(B1)	REMOVE ALL CABINETS, COUNTERS, APPLIANCES, AND OVERHEAD CABINETS. PREPARE FOR NEW KITCHEN.
(B2)	REMOVE EXISTING HOOD COVER, HOOD AND PREPARE FOR NEW HOOD AND COVER.
(B3)	REMOVE VANITY SINK. PREPARE FOR NEW VANITY
<b>FLOOR</b>	
(C1)	REMOVE EXISTING CARPETING AND PREPARE FOR NEW WOOD FLOOR
(C2)	REMOVE EXISTING CORK FLOOR AND PREPARE FOR NEW WOOD FLOORING
(C3)	REMOVE EXISTING WOOD FLOOR AND PREPARE FOR NEW WOOD FLOOR
(C4)	REMOVE EXISTING STONE FLOOR AND PREPARE FOR NEW WOOD FLOOR
<b>WALLS</b>	
[Hatched Pattern]	REMOVE WALL UP TO DOOR HEADER HGT
[Cross-hatched Pattern]	REMOVE WALL UP TO CEILING
[Diagonal Hatched Pattern]	REMOVE WALL UP TO ADJ DOOR HEADER HEIGHT
[Dotted Pattern]	RAISE EXISTING HEADER AS NOTED

- △ REV\_1
- REV\_2
- REV\_3
- REV\_4
- REV\_5
- REV\_6
- REV\_7

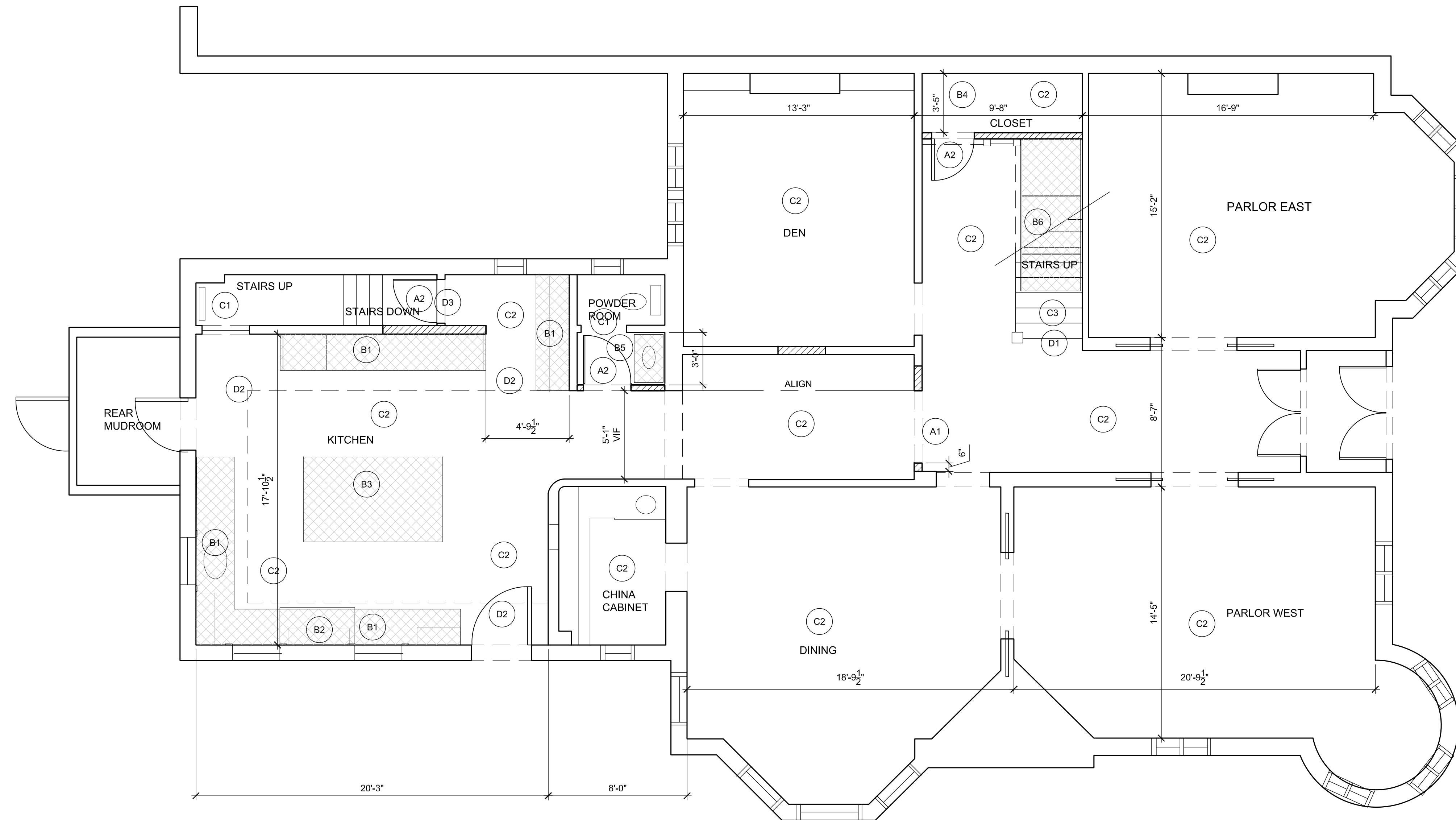


# AD 1.1

## 1st Floor - DEMO PLAN



Permitting and Inspections Department  
Approved with Conditions  
03/05/2019



**MATERIALS LEGEND**

TAG	DESCRIPTION
<b>DOOR OPENINGS</b>	
A1	TRIM OUT NEW/MODIFIED OPENING TO MATCH
A2	INSTALL SALVAGED DOOR AND TRIM TO MATCH
<b>CABINETS, FURNISHINGS</b>	
B1	INSTALL NEW APPLIANCES, COUNTERS AND CABINETS. SUPPLIED BY OWNER
B2	INSTALL NEW RANGE HOOD AND COVER. CONNECT TO EXTERIOR VIA EXISTING PENETRATION
B3	NEW KITCHEN ISLAND
B4	INSTALL SHELVES AND HANGING ROD IN NEW CLOSET
B5	INSTALL NEW VANITY
B6	INSTALL CUSTOM FABRICATED CLOSET CABINET BELOW STAIR
<b>FLOOR</b>	
C1	REFINISH EXISTING FLOOR TO MATCH NEW
C2	INSTALL NEW HARDWOOD FLOOR
C3	INSTALL NEW RUNNER ON STAIR. RUNNER PROVIDED BY OWNER.
<b>STAIR AND MISC</b>	
D1	SECURE EXISTING RAILING, REFINISH RAILING, AND PAINT STAIR TREADS AND RISERS
D2	9" DROP SOFFIT AROUND KITCHEN PERIMETER
D3	INSTALL NEW RISER BETWEEN KITCHEN LEVEL AND BASEMENT STAIR LANDING.

WALLS
NEW WALL (INFILL AND NEW ENTIRE WALL)

- △ REV\_1
- REV\_2
- REV\_3
- REV\_4
- REV\_5
- REV\_6
- REV\_7

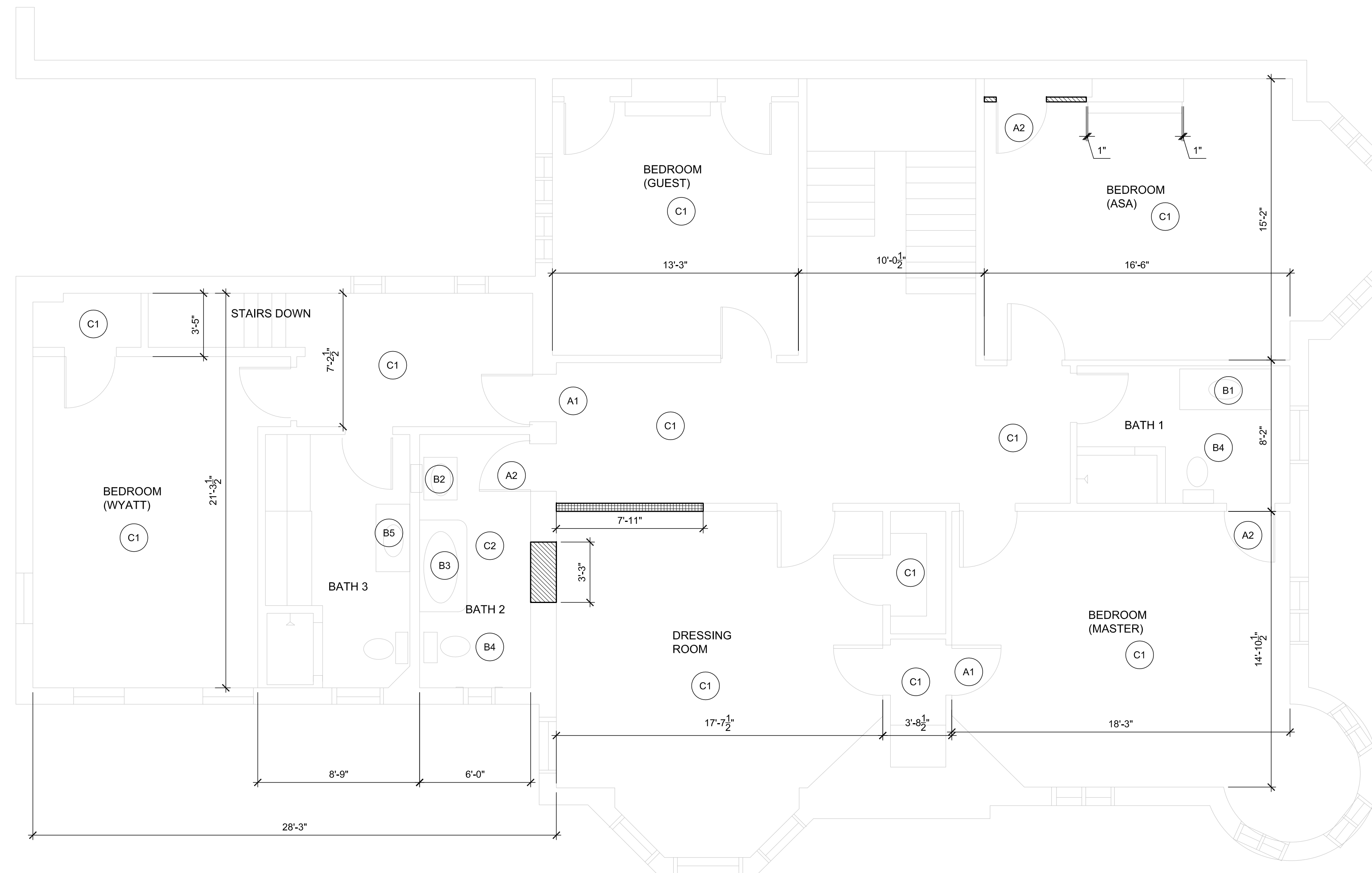
# A1.1

## 1ST FLOOR MATERIALS PLAN





Permitting and Inspections Department  
Approved with Conditions  
03/05/2019



**DEMO LEGEND**

TAG	DESCRIPTION
<b>DOOR OPENINGS</b>	
A1	REMOVE DOOR AND HINGES ONLY - REPAIR TRIM AS REQUIRED. SALVAGE DOOR AND HINGES
A2	REMOVE DOOR, HINGES, AND TRIM. SALVAGE DOOR, HINGES, AND TRIM CORNERS.
<b>CABINETS, FURNISHINGS</b>	
B1	REMOVE BATHROOM VANITY AND SINK
B2	SALVAGE EXISTING SINK
B3	REMOVE EXISTING BATHTUB
B4	REMOVE EXISTING TOILET.
B5	REMOVE COUNTER AND BASIN - VANITY TO REMAIN
<b>FLOOR</b>	
C1	REMOVE EXISTING CARPETING
C2	REMOVE EXISTING WOOD FLOOR.
<b>WALLS</b>	
	REMOVE WALL UP TO CEILING
	REMOVE WALL UP TO HEADER HEIGHT

- △ REV\_1
- REV\_2
- REV\_3
- REV\_4
- REV\_5
- REV\_6
- REV\_7

# AD2.1

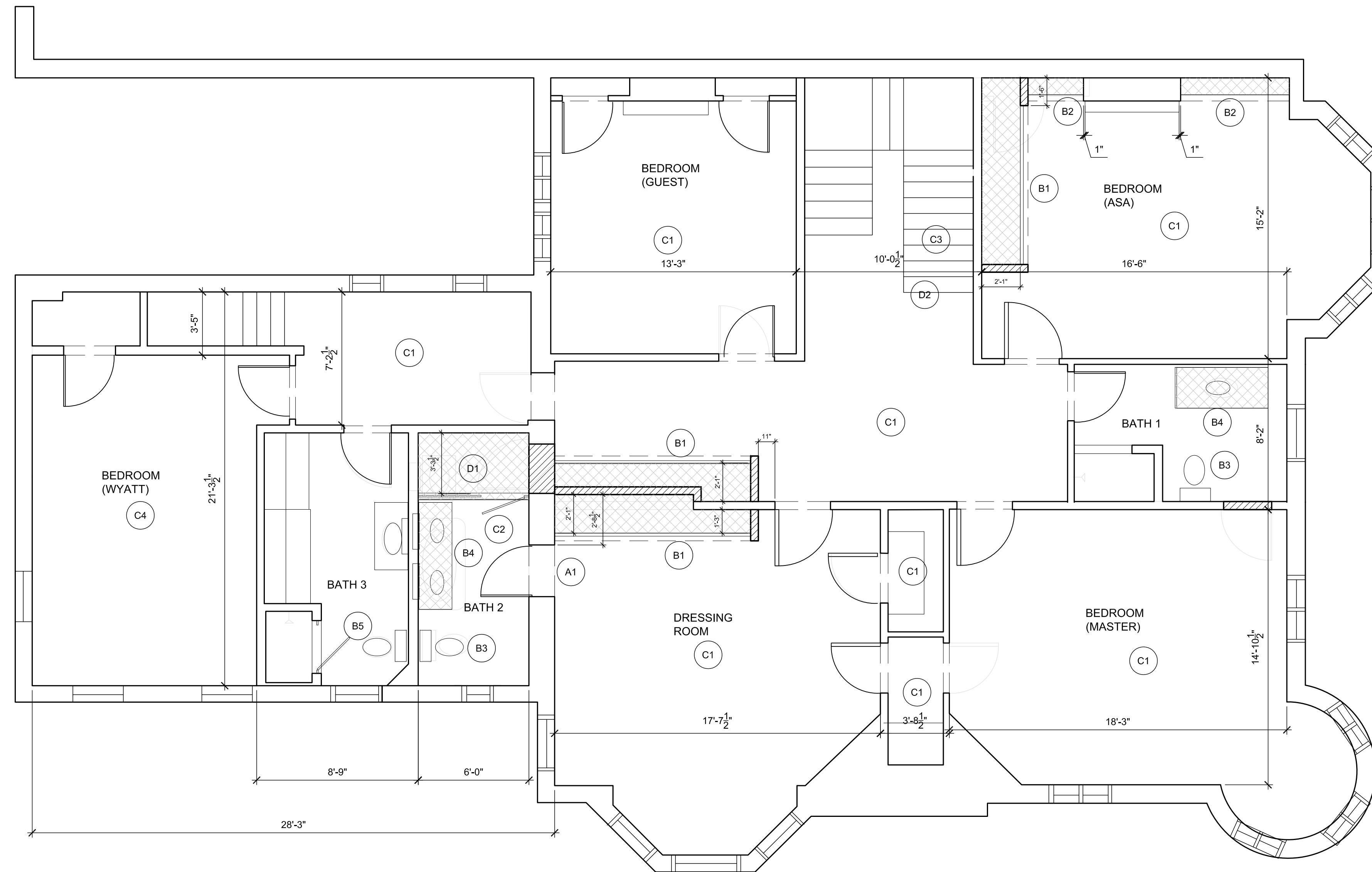
2nd Floor - DEMO PLAN







Permitting and Inspections Department  
Approved with Conditions  
03/05/2019



**MATERIALS LEGEND**

TAG	DESCRIPTION
<b>DOOR OPENINGS</b>	
A1	INSTALL SALVAGED DOOR AND TRIM TO MATCH
<b>CABINETS, FURNISHINGS</b>	
B1	INSTALL CUSTOM FABRICATED CLOSET CABINET WITH SHELVES AND HANGING ROD
B2	INSTALL NEW BUILT IN BOOKSHELVES
B3	INSTALL NEW TOILET
B4	INSTALL NEW VANITY
B5	INSTALL GLASS SHOWER DOOR
B6	INSTALL CUSTOM FABRICATED CLOSET CABINET WITH SHELVES AND HANGING ROD
<b>FLOOR</b>	
C1	SAND AND REFINISH EXISTING PINE FLOOR
C2	INSTALL NEW TILE FLOOR
C3	INSTALL NEW RUNNER ON STAIR. RUNNER PROVIDED BY OWNER.
C4	INSTALL NEW CARPET.
<b>STAIR AND MISC</b>	
D1	INSTALL NEW SHOWER WITH STONE CURB, TILE WALL AND GLASS SHOWER DOOR
D2	SECURE EXISTING RAILING, REFINISH RAILING, AND PAINT STAIR TREADS AND RISERS

WALLS	
	NEW WALL (INFILL AND NEW ENTIRE WALL)

- △ REV\_1
- REV\_2
- REV\_3
- REV\_4
- REV\_5
- REV\_6
- REV\_7

# A2.1

## 2ND FLOOR MATERIALS PLAN

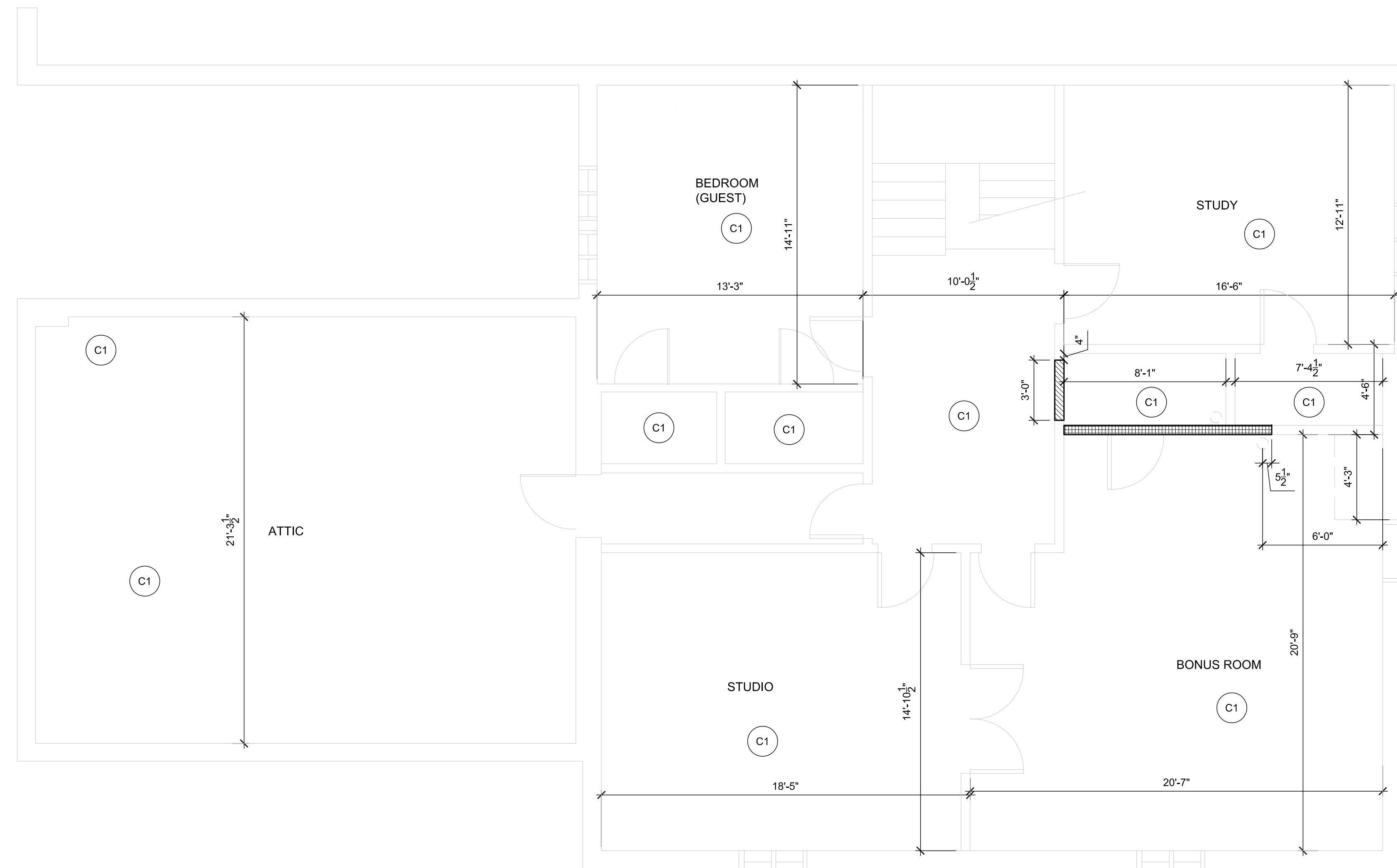




Permitting and Inspections Department  
 Approved with Conditions  
 03/05/2019

**DEMO LEGEND**

TAG	DESCRIPTION
FLOOR	
C1	REMOVE EXISTING CARPETING
WALLS	
	REMOVE WALL UP TO CEILING
	REMOVE WALL UP TO HEADER HEIGHT



- △ REV\_1
- REV\_2
- REV\_3
- REV\_4
- REV\_5
- REV\_6
- REV\_7

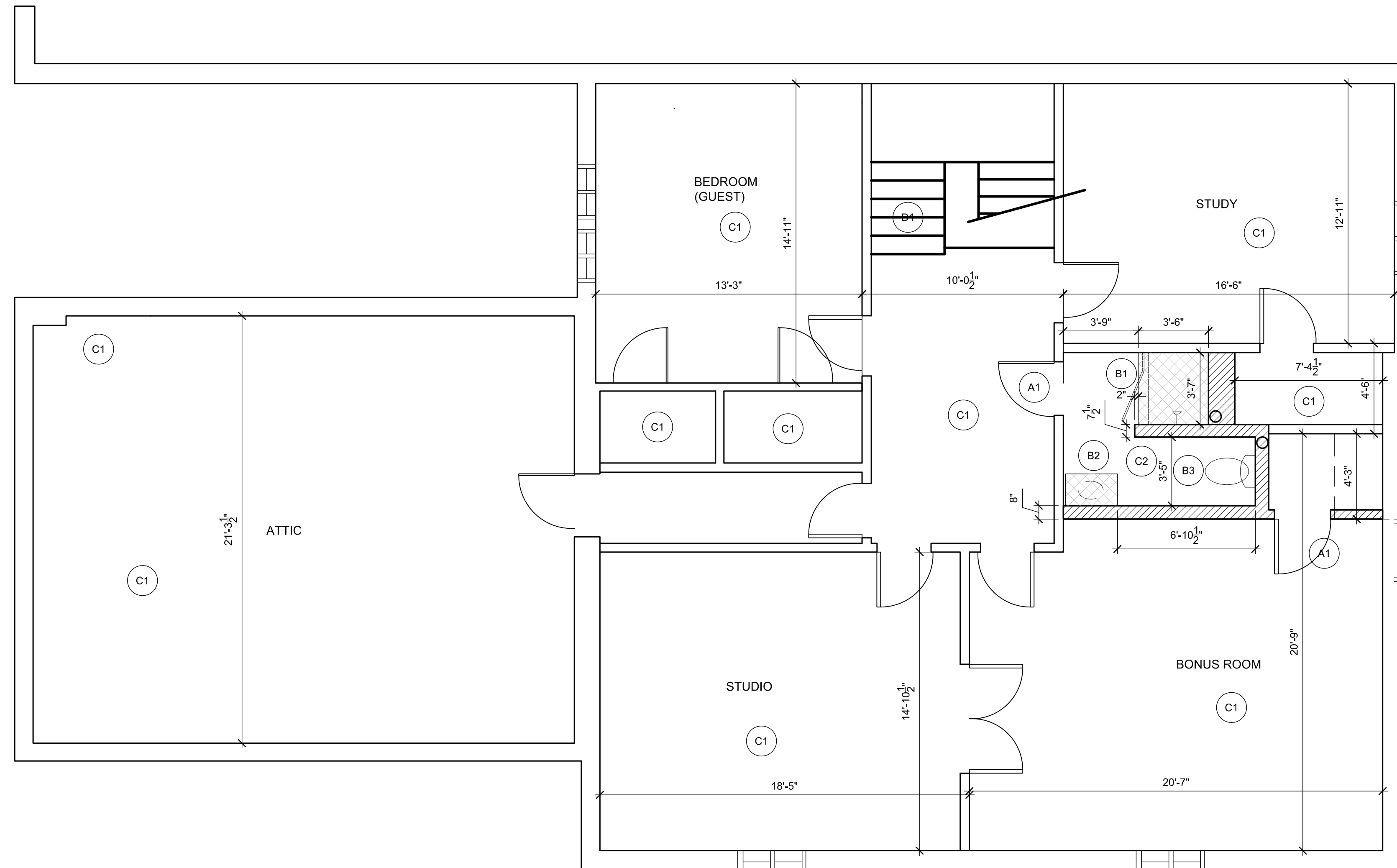
# AD3.1

## 3rd Floor - DEMO PLAN





Permitting and Inspections Department  
Approved with Conditions  
03/05/2019



**MATERIALS LEGEND**

TAG	DESCRIPTION
<b>DOOR OPENINGS</b>	
A1	INSTALL SALVAGED DOOR AND TRIM TO MATCH
<b>CABINETS, FURNISHINGS</b>	
B1	INSTALL NEW SHOWER WITH STONE CURB, TILE FLOOR/WALL, AND GLASS DOOR - 6" STEP UP
B2	INSTALL SALVAGED SINK FROM 2ND FLOOR
B3	INSTALL NEW TOILET
<b>FLOOR</b>	
C1	SAND AND REFINISH EXISTING PINE FLOOR
C2	INSTALL NEW TILE FLOOR
<b>STAIR AND MISC</b>	
D1	SECURE EXISTING RAILING, REFINISH RAILING, AND PAINT STAIR TREADS AND RISERS

WALLS
NEW WALL (INFILL AND NEW ENTIRE WALL)

- △ REV\_1
- REV\_2
- REV\_3
- REV\_4
- REV\_5
- REV\_6
- REV\_7

# A 3 . 1

## 3rd Floor - MATERIALS PLAN

