



SALEM STREET

S 71°-29'-30"W

N 71°-29'-30"E
160.00'

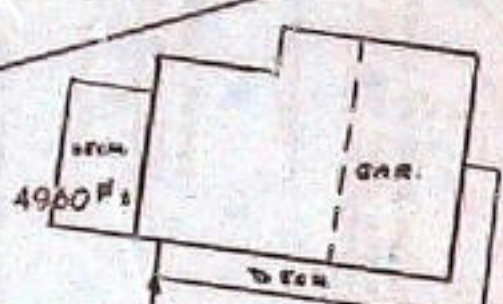
3' 0/9 7

16.50'

399.55' TO GRANITE MON AT SCHOOL ST

GRANITE MON.

N/F
WESLEY H.
STONE
3272/250



S 85°-22'-50"E
184.60'

N/F PORTLAND TERMINAL CO
SEE 398/157

REBAR TO BE SET

NOTES:

LOCUS DEEDS 396/157
881/221
SEE ALSO 407/226

SEE PLAN BOOK 2 PAGE 5

SEE CITY ASSESSOR'S MAP # 60 PARCEL C-2

REV. 1 4-7-94 ADDED STRUCTURES

PLAN OF LAND ON
SALEM STREET
FOR ARTHUR BLANCK
PORTLAND, MAINE

Owen Haskell, Inc.

Civil Engineers

South Portland, Maine

Land Surveyors

DRAWN BY BLP

DATE

JOB NO.
86144P

TRACE BY BLP

11-10-86

CHECK BY WMD

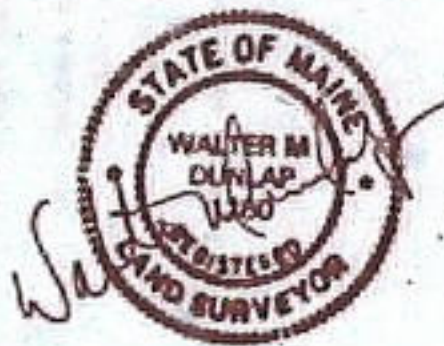
SCALE

DENY. NO.

BOOK NO. 854 P

1" = 20'

SCALE:



DRAWN BY BLP	DATE	JOB NO.
TRACE BY BLP	11-10-86	86144P
CHECK BY WMD	SCALE	DENY. NO.
BOOK NO. 854 P	1" = 20'	