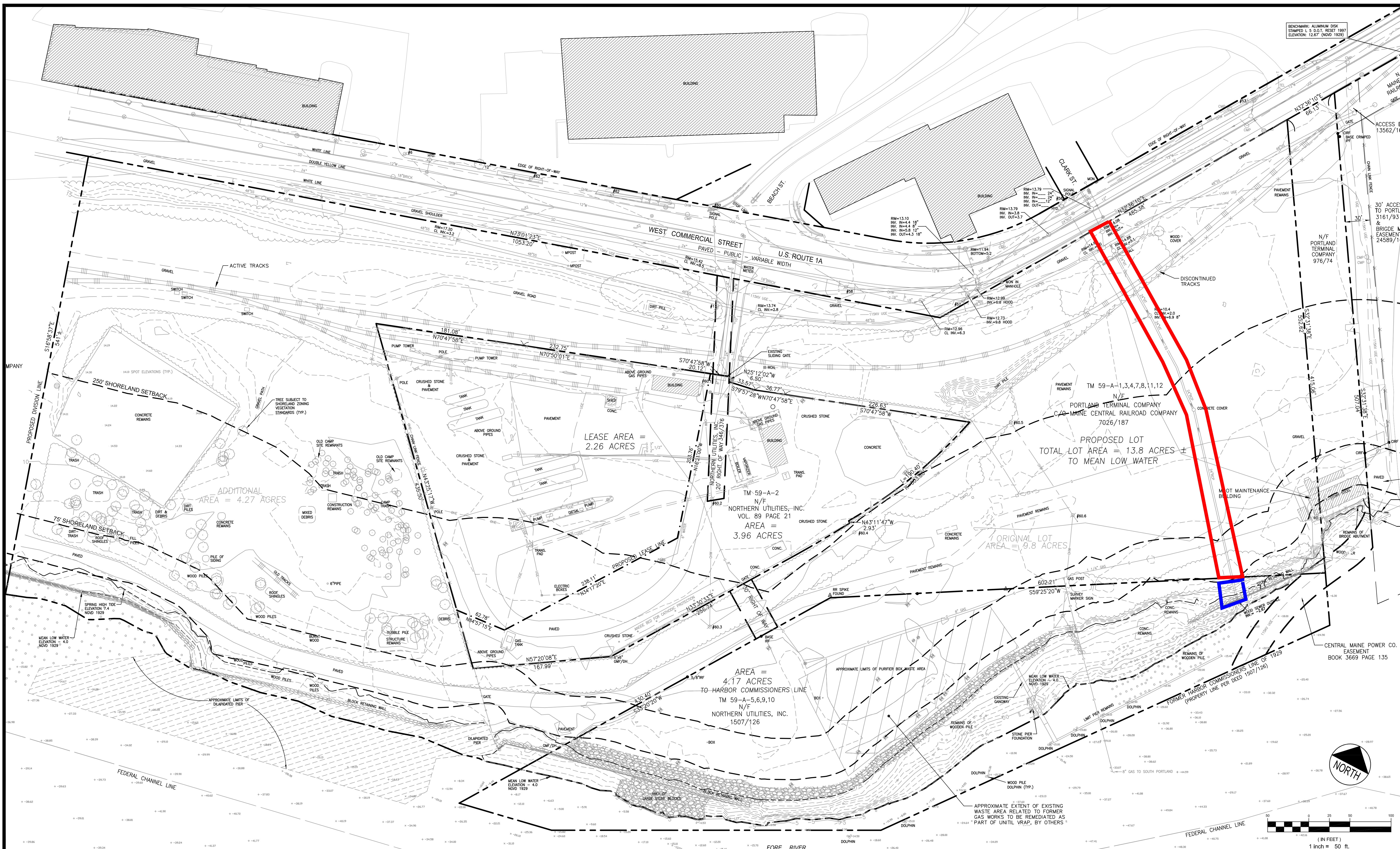


BENCHMARK: ALUMINUM DISK
 STAMPED L.S.D. 0.07, RESET 1987
 ELEVATION: 12.67' (NOV. 1929)



NOTES:
 1. SURVEY DATA BY OWEN HASKELL PER INFORMATION ON SHEET C-1.2.
 2. EXISTING OFFSITE BUILDING LOCATIONS ARE BASED ON THE CITY OF PORTLAND'S GIS DATA.
 3. NORTHERN UTILITIES INC.'S PROPERTIES SUBJECT TO REMEDIAL ACTIVITIES ASSOCIATED WITH MAINE DEP VOLUNTARY RESPONSE ACTION PLAN (VRAP) FOR WHICH A NO ACTION ASSURANCE LETTER HAS BEEN ISSUED.

PLAN REFERENCES:
 1. ALTAACMS LAND TITLE SURVEY ON WEST COMMERCIAL STREET, PORTLAND, MAINE MADE FOR NEW YARD LLC, 58 FORE STREET, PORTLAND, MAINE BY OWEN HASKELL INC., DATED JULY 2, 2012.
 2. RECORD DRAWINGS FOR CONTRACT NO. 3 - LOWER FORE RIVER INTERCEPTOR, PROVIDED BY PORTLAND WATER DISTRICT.

REV	DATE	DESCRIPTION	REVISIONS
3	09.09.13	FINAL APPROVED PLANS	
2	02.01.13	RELEASED FOR BIDDING	
1	10.31.12	FINAL SITE PLAN APPLICATION SUBMISSION	

P.E. STEPHEN R. BUSHEY
 LIC. #7429

PROJECT	CANAL LANDING	DeLUCA-HOFFMAN ASSOCIATES, INC. 778 MAIN STREET, SUITE 8 SOUTH PORTLAND, ME 04106 207.775.1121 WWW.DELUCAHOFFMAN.COM
SHEET TITLE	OVERALL EXISTING CONDITIONS PLAN	
CLIENT	NEW YARD LLC 58 FORE STREET PORTLAND, ME 04101	DRAWN: DED DATE: APR 2012 DESIGNED: RJW SCALE: 1" = 50' CHECKED: SRB JOB NO. 3091 FILE NAME: 3091-EXISTING SHEET: C-1.3

