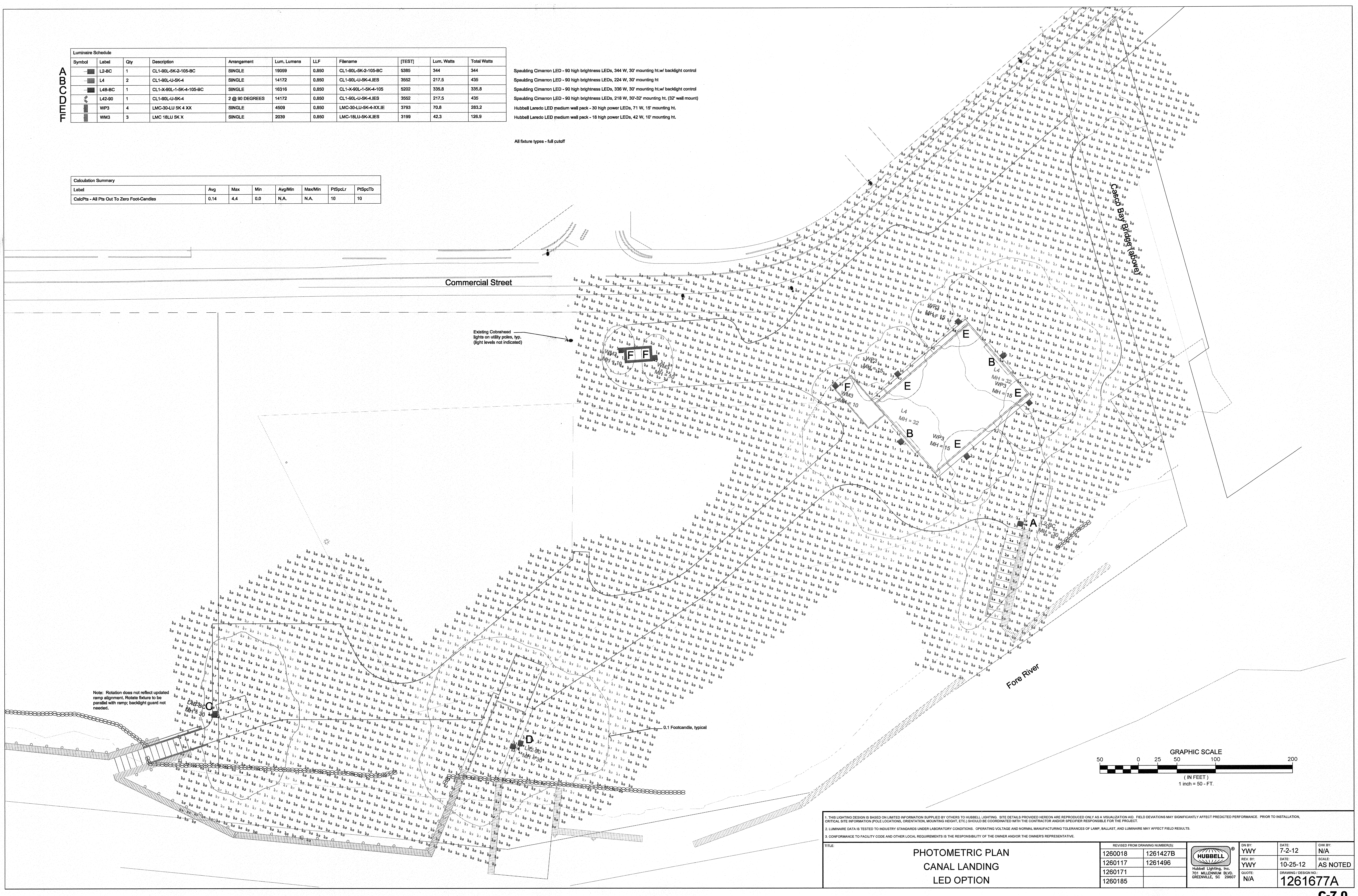


Symbol	Label	Qty	Description	Arrangement	Lum. Lumens	LLF	Filename	[TEST]	Lum. Watts	Total Watts
■	L2-BC	1	CL1-90L-SK2-105-BC	SINGLE	19059	0.850	CL1-90L-SK2-105-BC	5385	344	344
■	L4	2	CL1-90L-U-SK4	SINGLE	14172	0.850	CL1-90L-U-SK4-JES	3552	217.5	435
■	L4B-BC	1	CL1-X-90L-1-SK4-105-BC	SINGLE	16316	0.850	CL1-X-90L-1-SK4-105	5202	335.8	335.8
■	L42-90	1	CL1-90L-U-SK4	2 @ 90 DEGREES	14172	0.850	CL1-90L-U-SK4-JES	3552	217.5	435
■	WP3	4	LMC-30-LU-SK4-XX	SINGLE	4509	0.850	LMC-30-LU-SK4-XXJIE	3793	70.8	283.2
■	WM3	3	LMC-18LU-SK-X	SINGLE	2039	0.850	LMC-18LU-SK-XJES	3199	42.3	126.9

Spaulding Cimarron LED - 90 high brightness LEDs, 344 W, 30' mounting ht./w backlight control
 Spaulding Cimarron LED - 90 high brightness LEDs, 224 W, 30' mounting ht
 Spaulding Cimarron LED - 90 high brightness LEDs, 338 W, 30' mounting ht./w backlight control
 Spaulding Cimarron LED - 90 high brightness LEDs, 218 W, 30'-32' mounting ht. (32' wall mount)
 Hubbell Laredo LED medium wall pack - 30 high power LEDs, 71 W, 15' mounting ht.
 Hubbell Laredo LED medium wall pack - 18 high power LEDs, 42 W, 10' mounting ht.

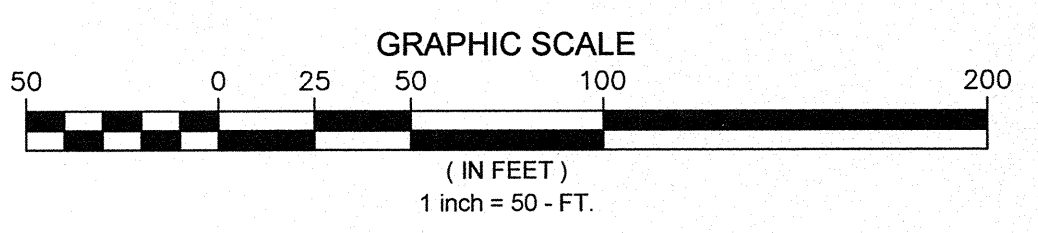
All fixture types - full cutoff

Label	Avg	Max	Min	Avg/Min	Max/Min	FISpcLr	FISpcTb
CalcPts - All Pts Out To Zero Foot-Candles	0.14	4.4	0.0	N.A.	N.A.	10	10



Note: Rotation does not reflect updated ramp alignment. Rotate fixture to be parallel with ramp; backlight guard not needed.

Existing Cobrahead lights on utility poles, typ. (light levels not indicated)



1. THIS LIGHTING DESIGN IS BASED ON LIMITED INFORMATION SUPPLIED BY OTHERS TO HUBBELL LIGHTING. SITE DETAILS PROVIDED HEREON ARE REPRODUCED ONLY AS A VISUALIZATION AID. FIELD DEVIATIONS MAY SIGNIFICANTLY AFFECT PREDICTED PERFORMANCE. PRIOR TO INSTALLATION, CRITICAL SITE INFORMATION (POLE LOCATIONS, ORIENTATION, MOUNTING HEIGHT, ETC) SHOULD BE COORDINATED WITH THE CONTRACTOR AND/OR SPECIFIER RESPONSIBLE FOR THE PROJECT.
 2. LUMINAIRE DATA IS TESTED TO INDUSTRY STANDARDS UNDER LABORATORY CONDITIONS. OPERATING VOLTAGE AND NORMAL MANUFACTURING TOLERANCES OF LAMP, BALLAST, AND LUMINAIRE MAY AFFECT FIELD RESULTS.
 3. CONFORMANCE TO FACILITY CODE AND OTHER LOCAL REQUIREMENTS IS THE RESPONSIBILITY OF THE OWNER AND/OR THE OWNER'S REPRESENTATIVE.

PHOTOMETRIC PLAN CANAL LANDING LED OPTION		REVISED FROM DRAWING NUMBER(S) 1260018 1261427B 1260117 1261496 1260171 1260185	 Hubbell Lighting, Inc. 701 MILLENNIUM BLVD. GREENVILLE, SC 29607	DN BY: YVY REV BY: YVY QUOTE: N/A	DATE: 7-2-12 DATE: 10-25-12	CHK BY: N/A SCALE: AS NOTED DRAWING / DESIGN NO: 1261677A
--	--	---	--	---	--------------------------------	---

C-7.0