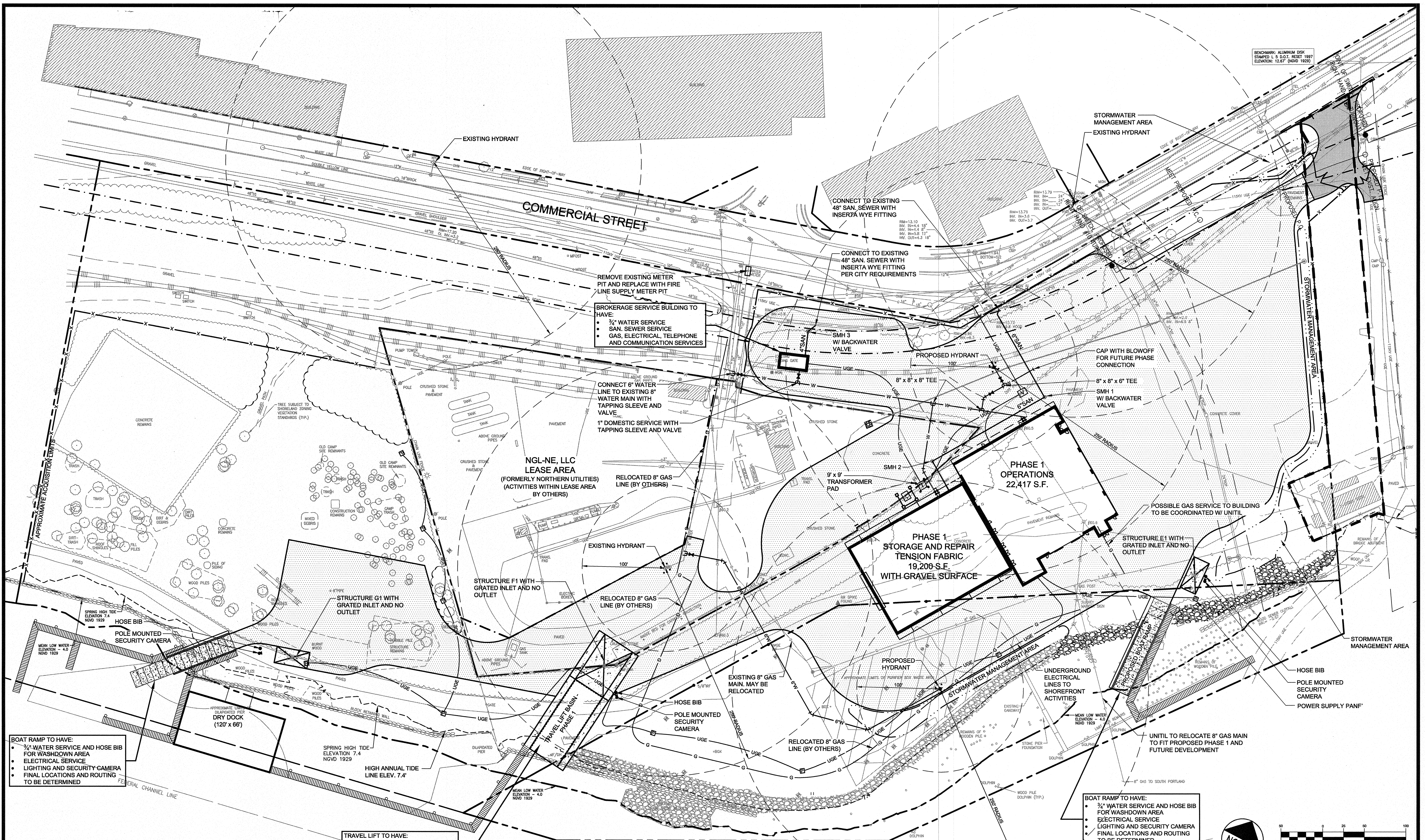


BENCHMARK: ALUMINUM DISK
 STAMPED & S.D.O.T. RESET 1997
 ELEVATION: 12.67 (NGVD 1929)



BOAT RAMP TO HAVE:

- 3/4" WATER SERVICE AND HOSE BIB FOR WASHDOWN AREA
- ELECTRICAL SERVICE
- LIGHTING AND SECURITY CAMERA
- FINAL LOCATIONS AND ROUTING TO BE DETERMINED

SEE PLAN C-7.0 FOR LIGHTING AND CONDUIT LAYOUT PREPARED BY MOHR & SEREDIN LANDSCAPE ARCHITECTS, INC.

ROUTING OF ON-SITE WATER AND PRIMARY AND SECONDARY ELECTRICAL SYSTEMS TO BE DETERMINED

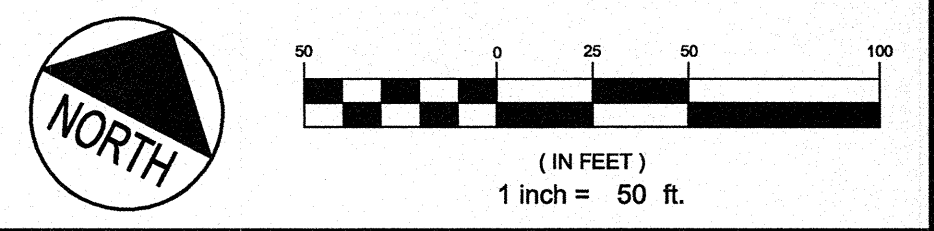
FLOATING DOCK SYSTEM TO HAVE THREE PHASE POWER, FINAL LOCATION TO BE DETERMINED

TRAVEL LIFT TO HAVE:

- 3/4" WATER SERVICE AND HOSE BIB FOR WASHDOWN AREA
- ELECTRICAL SERVICE
- LIGHTING AND SECURITY CAMERA
- FINAL LOCATIONS AND ROUTING TO BE DETERMINED

BOAT RAMP TO HAVE:

- 3/4" WATER SERVICE AND HOSE BIB FOR WASHDOWN AREA
- ELECTRICAL SERVICE
- LIGHTING AND SECURITY CAMERA
- FINAL LOCATIONS AND ROUTING TO BE DETERMINED



PRELIMINARY - NOT FOR CONSTRUCTION

REV	DATE	DESCRIPTION
2	12.05.12	REVISED AND RESUBMITTED TO CITY
1	10.31.12	FINAL SITE PLAN APPLICATION SUBMISSION

STATE OF MAINE
 LICENSED PROFESSIONAL ENGINEER
 STEPHEN R. BUSHEY
 No. 7129
 LIC. #7429

PROJECT: CANAL LANDING
 SHEET TITLE: UTILITY PLAN PHASE 1
 CLIENT: NEW YARD LLC
 58 FORE STREET
 PORTLAND, ME 04101

DH DeLUCA-HOFFMAN ASSOCIATES, INC.
 778 MAIN STREET, SUITE 8
 SOUTH PORTLAND, ME 04106
 207.775.1121
 WWW.DELUCAHOFFMAN.COM

DRAWN: CMW DATE: SEPT 2012
 DESIGNED: RJW SCALE: 1" = 50'
 CHECKED: SRB JOB NO. 3091
 FILE NAME: 3091-UTILITY-ALT
 SHEET: C-4.1