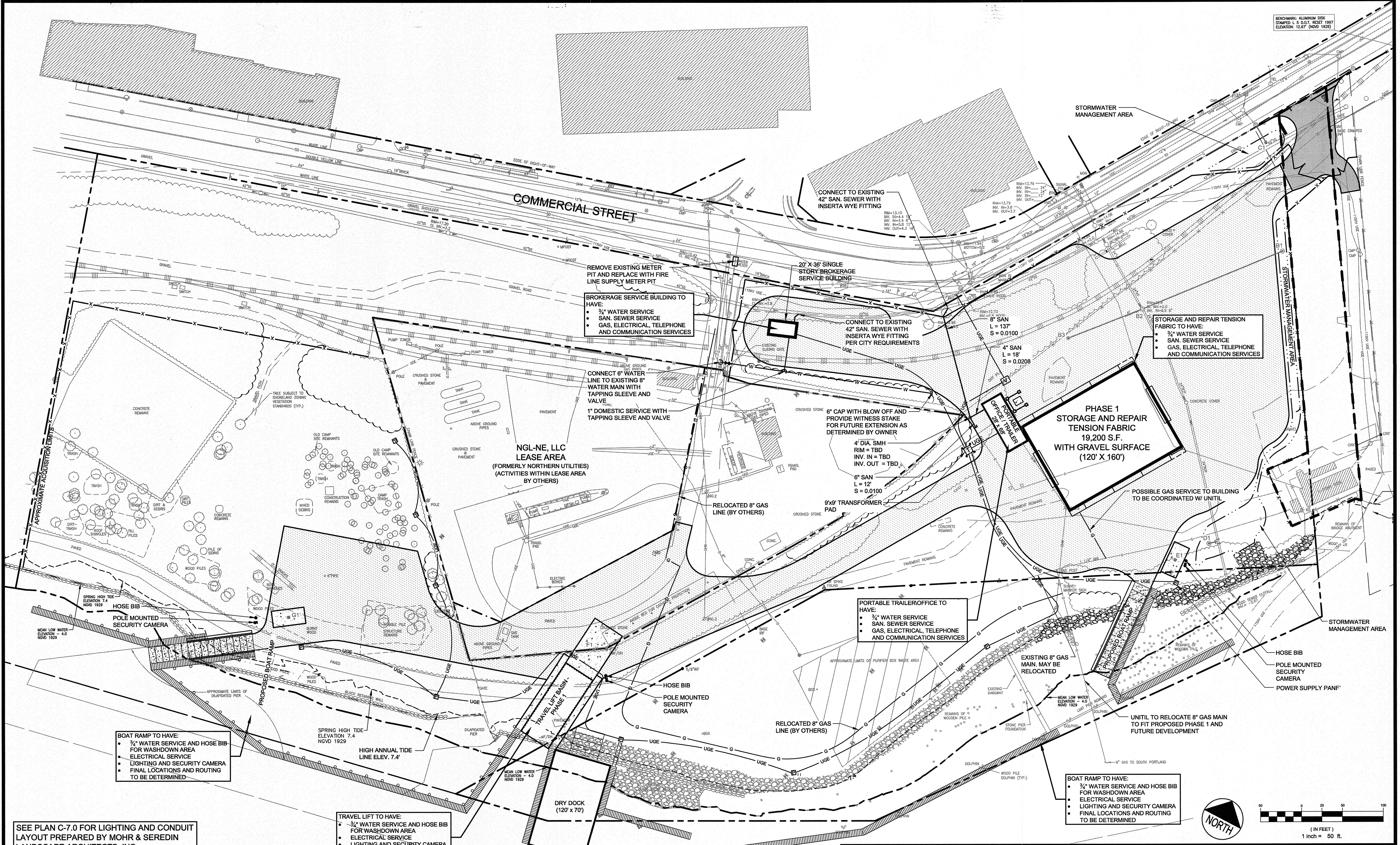


BENCHMARK: ALUMINUM DSK  
 STAMPED: L.S.D.O.T. 08/21/1997  
 ELEVATION: 12.67' (NGVD 1929)



REMOVE EXISTING METER PIT AND REPLACE WITH FIRE LINE SUPPLY METER PIT

BROKERAGE SERVICE BUILDING TO HAVE:

- 3/4" WATER SERVICE
- SAN. SEWER SERVICE
- GAS, ELECTRICAL, TELEPHONE AND COMMUNICATION SERVICES

STORAGE AND REPAIR TENSION FABRIC TO HAVE:

- 3/4" WATER SERVICE
- SAN. SEWER SERVICE
- GAS, ELECTRICAL, TELEPHONE AND COMMUNICATION SERVICES

PORTABLE TRAILER/OFFICE TO HAVE:

- 3/4" WATER SERVICE
- SAN. SEWER SERVICE
- GAS, ELECTRICAL, TELEPHONE AND COMMUNICATION SERVICES

BOAT RAMP TO HAVE:

- 3/4" WATER SERVICE AND HOSE BIB FOR WASHDOWN AREA
- ELECTRICAL SERVICE
- LIGHTING AND SECURITY CAMERA
- FINAL LOCATIONS AND ROUTING TO BE DETERMINED

TRAVEL LIFT TO HAVE:

- 3/4" WATER SERVICE AND HOSE BIB FOR WASHDOWN AREA
- ELECTRICAL SERVICE
- LIGHTING AND SECURITY CAMERA
- FINAL LOCATIONS AND ROUTING TO BE DETERMINED

SEE PLAN C-7.0 FOR LIGHTING AND CONDUIT LAYOUT PREPARED BY MOHR & SEREDIN LANDSCAPE ARCHITECTS, INC.

ROUTING OF ON-SITE WATER AND PRIMARY AND SECONDARY ELECTRICAL SYSTEMS TO BE DETERMINED

FLOATING DOCK SYSTEM TO HAVE THREE PHASE POWER, FINAL LOCATION TO BE DETERMINED

**PRELIMINARY - NOT FOR CONSTRUCTION**

REV	DATE	DESCRIPTION	DESIGNED BY	CHECKED BY
1	10.31.12	FINAL SITE PLAN APPLICATION SUBMISSION	P.E. STEPHEN R. BUSHEY	LIC. #7429

PROJECT	CANAL LANDING
SHEET TITLE	UTILITY PLAN PHASE 1
CLIENT	NEW YARD LLC 58 FORE STREET PORTLAND, ME 04101

<p>DeLUCA-HOFFMAN ASSOCIATES, INC.          778 MAIN STREET, SUITE 8          SOUTH PORTLAND, ME 04106          207.775.1121          WWW.DELUCAHOFFMAN.COM</p>	<p>DRAWN: CMV DATE: SEPT 2012</p> <p>DESIGNED: RJW SCALE: 1" = 50'</p> <p>CHECKED: SRB JOB NO. 3091</p> <p>FILE NAME: 3091-UTILITY-ALT</p> <p>SHEET C-4.1</p>
---	---