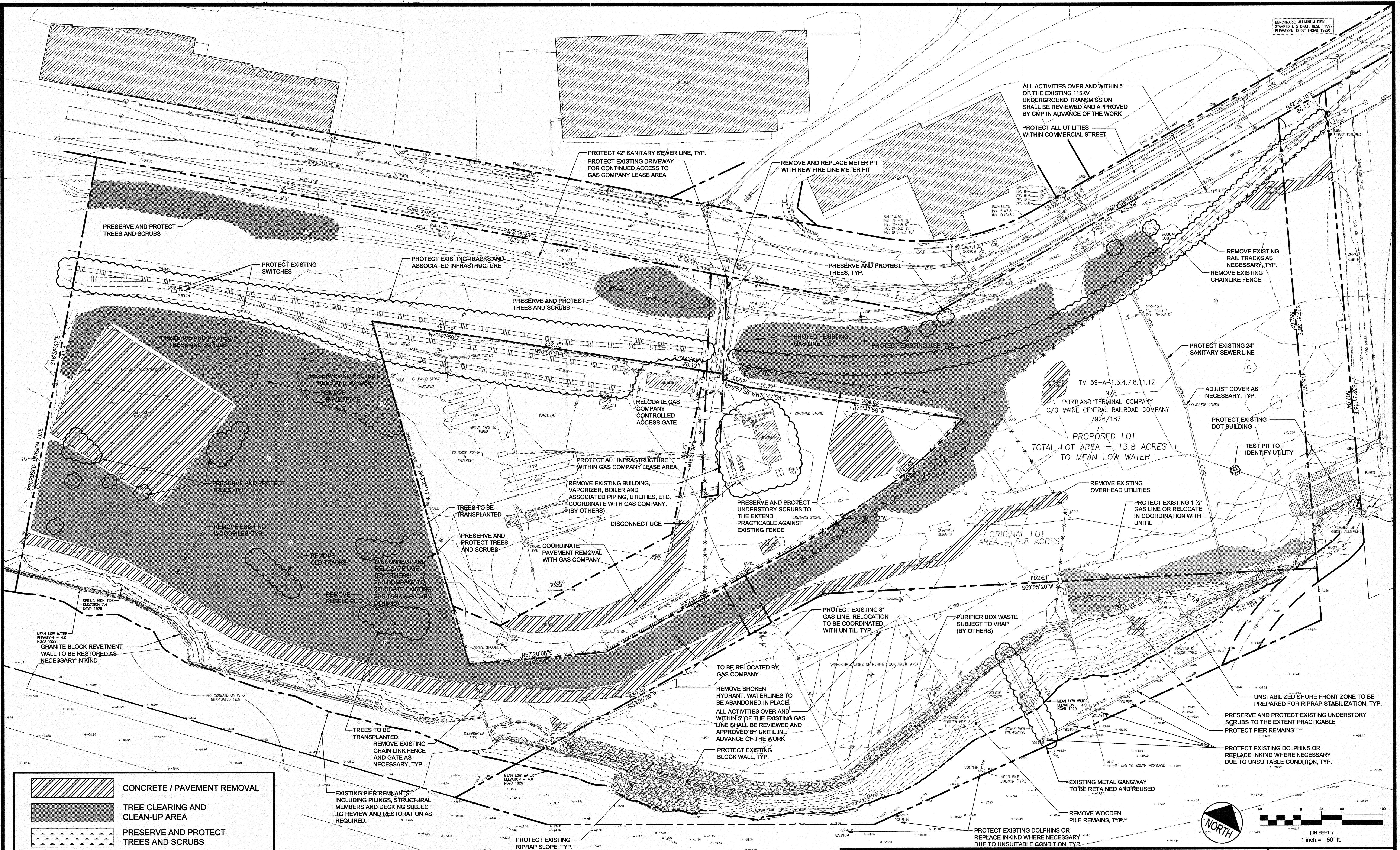
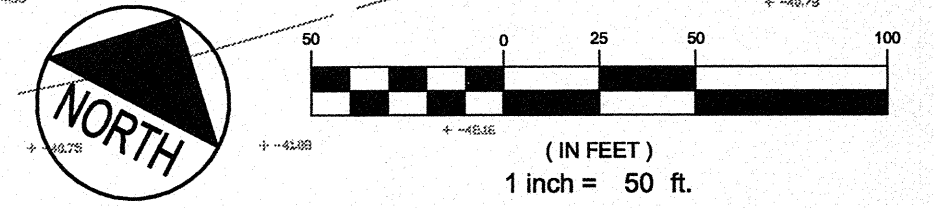


BENCHMARK ALUMINUM DISK
 STAMPED 1.5 D.O.T. RESET 1997
 ELEVATION 12.87' (NOV 1929)



	CONCRETE / PAVEMENT REMOVAL
	TREE CLEARING AND CLEAN-UP AREA
	PRESERVE AND PROTECT TREES AND SCRUBS

- NOTE:**
1. ALL DELETERIOUS AND HAZARDOUS WASTE TO BE DISPOSED OF APPROPRIATELY.
 2. DEMOLITION AND REMOVALS WILL BE PHASED WITH THE DEVELOPMENT WITH THE EXCEPTION OF THE CLEARING OF ALL VEGETATION WHICH WILL OCCUR DURING PHASE 1.
 3. PORTIONS OF REMOVALS TO BE PERFORMED BY UNITIL OR THEIR ASSIGNS AS PART OF VRAP.



REV	DATE	DESCRIPTION	DESIGNED BY	DATE
1	10.31.12	FINAL SITE PLAN APPLICATION SUBMISSION	STEPHEN R. BUSHEY	NOV 2012
REVISIONS			P.E. STEPHEN R. BUSHEY	LIC. #7429

PROJECT
CANAL LANDING

SHEET TITLE
DEMOLITION AND REMOVALS PLAN

CLIENT
NEW YARD LLC
 58 FORE STREET
 PORTLAND, ME 04101

DH DeLUCA-HOFFMAN ASSOCIATES, INC.
 778 MAIN STREET, SUITE 8
 SOUTH PORTLAND, ME 04106
 207.775.1151
 WWW.DELUCAHOFFMAN.COM

DRAWN: DED **DATE:** APR 2012
DESIGNED: RJW **SCALE:** 1" = 50'
CHECKED: SRB **JOB NO.:** 3091
FILE NAME: 3091-DEMO
SHEET C-1.4