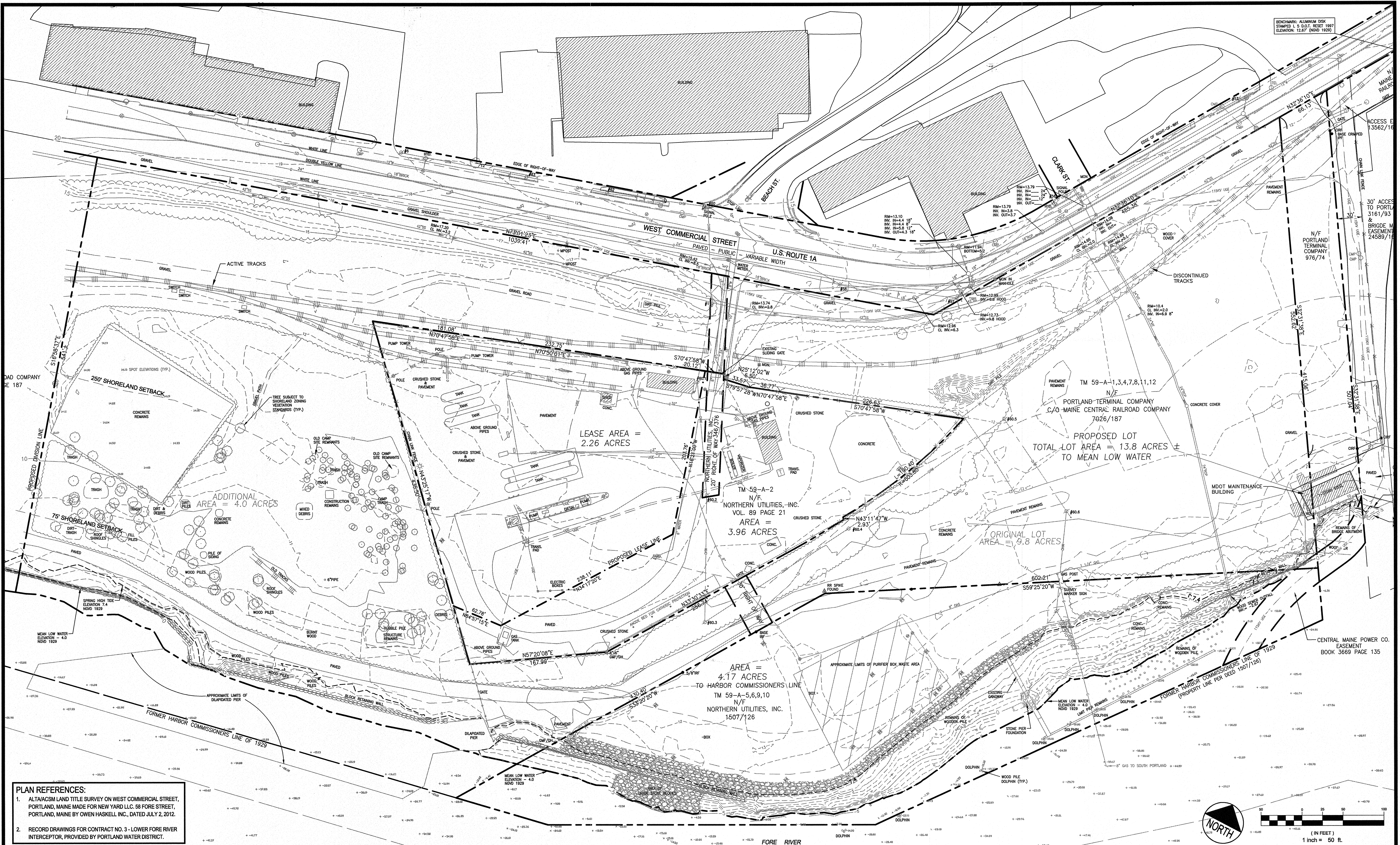


BENCHMARK: ALUMINUM DISK
 STAMPED L.S.D.O.T. RESET 1997
 ELEVATION: 12.87' (NOV 1929)



PLAN REFERENCES:

- ALTA/CSM LAND TITLE SURVEY ON WEST COMMERCIAL STREET, PORTLAND, MAINE MADE FOR NEW YARD LLC, 58 FORE STREET, PORTLAND, MAINE BY OWEN HASKELL INC., DATED JULY 2, 2012.
- RECORD DRAWINGS FOR CONTRACT NO. 3 - LOWER FORE RIVER INTERCEPTOR, PROVIDED BY PORTLAND WATER DISTRICT.

NOTES:

- SURVEY DATA BY OWEN HASKELL PER INFORMATION ON SHEET C-1.2.
- EXISTING OFFSITE BUILDING LOCATIONS ARE BASED ON THE CITY OF PORTLAND'S GIS DATA.
- NORTHERN UTILITIES INC. PROPERTIES SUBJECT TO REMEDIAL ACTIVITIES ASSOCIATED WITH MAINE DEP VOLUNTARY RESPONSE ACTION PLAN (VRAP) FOR WHICH A NO ACTION ASSURANCE LETTER HAS BEEN ISSUED.

REV	DATE	DESCRIPTION
1	10.31.12	FINAL SITE PLAN APPLICATION SUBMISSION
REVISIONS		

STATE OF MAINE
 REGISTERED PROFESSIONAL ENGINEER
 STEPHEN R. BUSHEY
 LIC. #7429

PROJECT: CANAL LANDING
SHEET TITLE: OVERALL EXISTING CONDITIONS PLAN
CLIENT: NEW YARD LLC
 58 FORE STREET
 PORTLAND, ME 04101

DLH DeLUCA-HOFFMAN ASSOCIATES, INC.
 778 MAIN STREET, SUITE 8
 SOUTH PORTLAND, ME 04106
 207.775.1121
 WWW.DELUCAHOFFMAN.COM

DRAWN: DED DATE: APR 2012
 DESIGNED: R/JW SCALE: 1" = 50'
 CHECKED: SRB JOB NO: 3091
 FILE NAME: 3091-EXISTING
 SHEET: C-1.3